

# High Frequency Ceramic Solutions

## 2.45GHz Directional Coupler/Low Pass Filter Combo Passive

P/N 2450CF15A0100

Detail Specification: 01/20/2012

Page 1 of 4

### General Specifications

Part Number	2450CF15A0100
Frequency (MHz)	2400 - 2500
Insertion Loss	0.8 dB max.
Return Loss	20 dB min.
Attenuation (min.)	20 dB @ 2 x Fo
Coupling	15 ± 1 dB
Isolation	22 dB min.

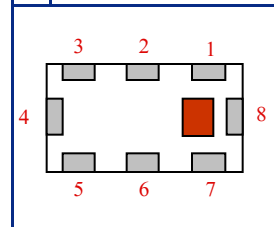
Impedance	50 Ω
Operating Temperature	-40 to +85°C
Storage Conditions	+5 to +35°C, Humidity 45~75%RH, 18 months max.
Reel Quantity	4000
Power (max.)	2W

P/N	Packaging Style*	Bulk	Suffix = S	Eg. 2450CF15A0100S
		T & R	Suffix = E	Eg. 2450CF15A0100E
Suffix	Termination Style	100% Tin	Suffix = None	Eg. 2450CF15A0100(E or S)
		Tin / Lead	Suffix = /Pb	Eg. 2450CF15A0100(E or S)/Pb
Evaluation Board (2-Port SMA EVB)		2450CF15A0100-EB-SMA		

\*<http://johansontechnology.com/en/integrated-passives/integrated-passive-tape-a-reel-packaging.html>

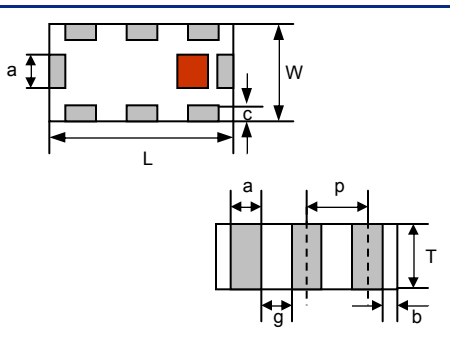
### Terminal Configuration

No.	Function
1	Termination
2	GND
3	GND
4	Input
5	Coupled Out
6	GND
7	GND
8	Output



### Mechanical Dimensions

	In	mm
L	0.079 ± 0.004	2.00 ± 0.10
W	0.049 ± 0.004	1.25 ± 0.10
T	0.027 ± 0.004	0.70 ± 0.10
a	0.012 ± 0.004	0.30 ± 0.10
b	0.008 ± 0.004	0.20 ± 0.10
c	0.012 +0.004/-0.008	0.30 +0.1/-0.2
g	0.014 ± 0.004	0.35 ± 0.10
p	0.026 ± 0.002	0.65 ± 0.05



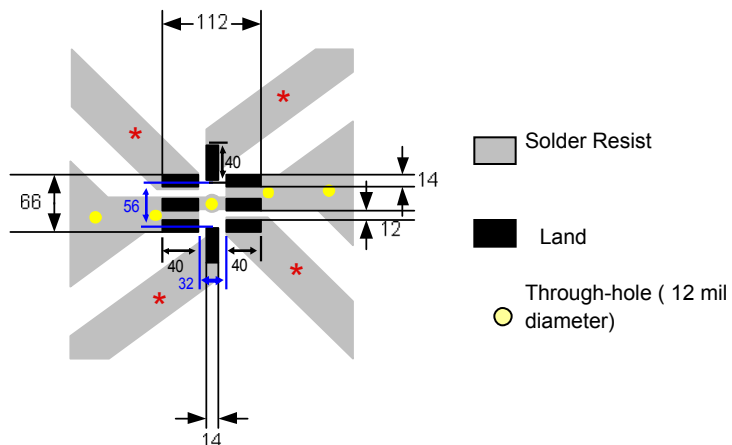
### Mounting Considerations

Mount these devices with brown mark facing up.

Line width should be designed to provide 50 ohm impedance, depending on PCB material and thickness

Units: mils

\* Line width should be designed to provide 50 ohm impedance, depending on PCB material and thickness



Johanson Technology, Inc. reserves the right to make design changes without notice.

All sales are subject to Johanson Technology, Inc. terms and conditions.



[www.johansontechnology.com](http://www.johansontechnology.com)

4001 Calle Tecate • Camarillo, CA 93012 • TEL 805.389.1166 FAX 805.389.1821

2012 Johanson Technology, Inc. All Rights Reserved

# High Frequency Ceramic Solutions

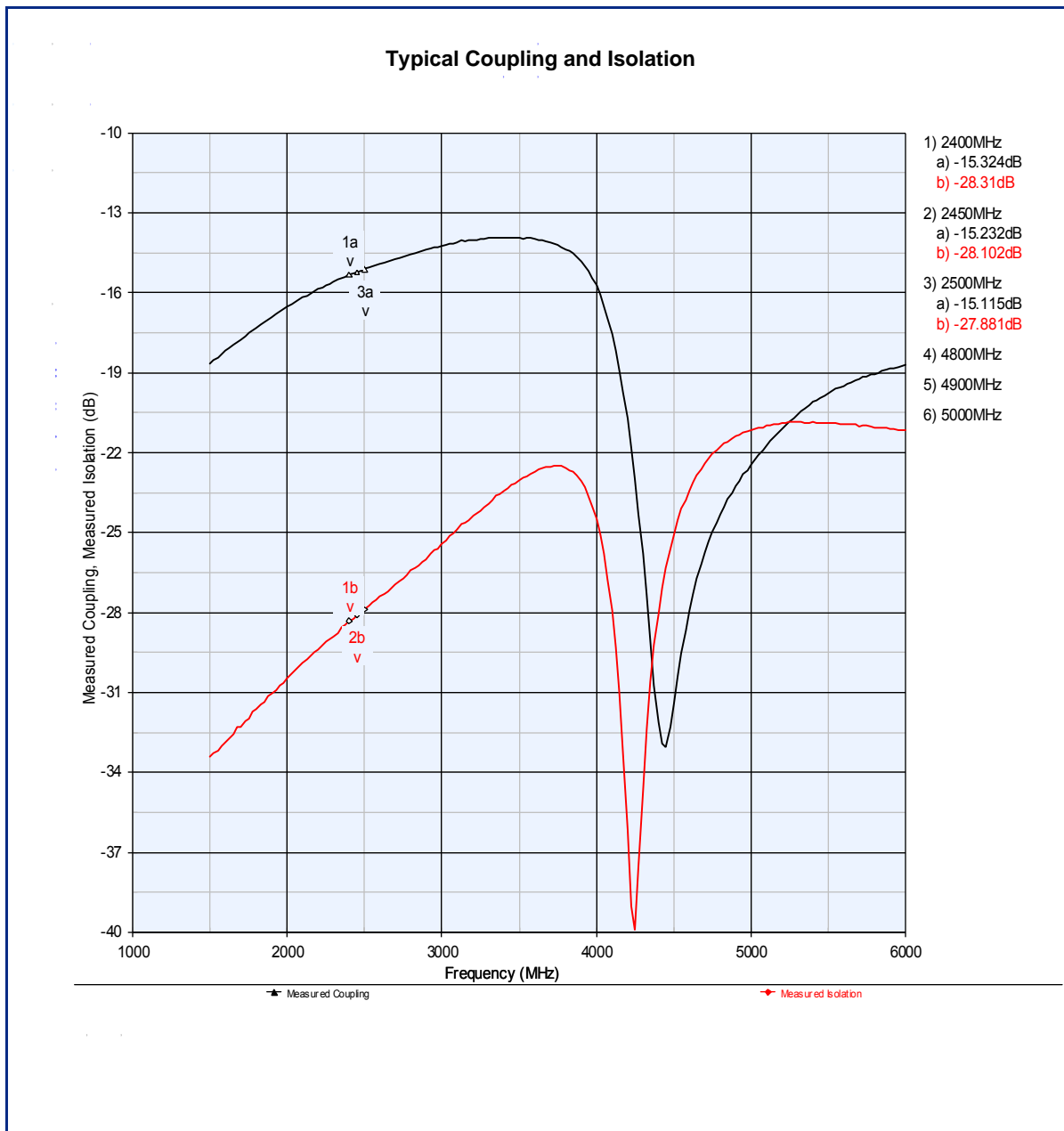
2.45GHz Directional Coupler/Low Pass Filter Combo Passive

P/N 2450CF15A0100

Detail Specification: 01/20/2012

Page 2 of 4

## Typical Electrical Performance (T=25°C)



Johanson Technology, Inc. reserves the right to make design changes without notice.

All sales are subject to Johanson Technology, Inc. terms and conditions.



[www.johansontechnology.com](http://www.johansontechnology.com)

4001 Calle Tecate • Camarillo, CA 93012 • TEL 805.389.1166 FAX 805.389.1821

2012 Johanson Technology, Inc. All Rights Reserved

# High Frequency Ceramic Solutions

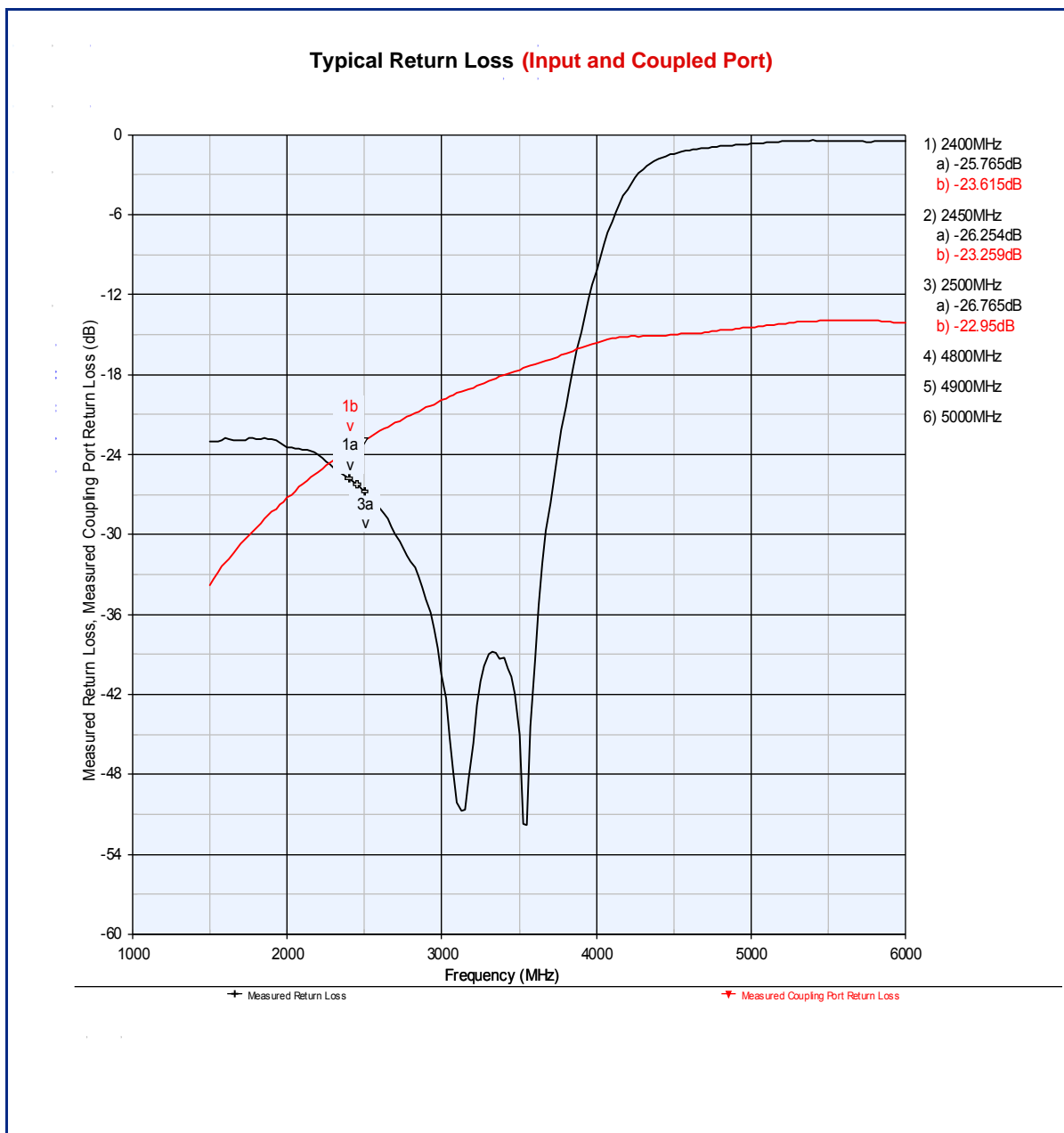
2.45GHz Directional Coupler/Low Pass Filter Combo Passive

P/N 2450CF15A0100

Detail Specification: 01/20/2012

Page 3 of 4

## Typical Electrical Performance (T=25°C)



Johanson Technology, Inc. reserves the right to make design changes without notice.

All sales are subject to Johanson Technology, Inc. terms and conditions.



[www.johansontechnology.com](http://www.johansontechnology.com)

4001 Calle Tecate • Camarillo, CA 93012 • TEL 805.389.1166 FAX 805.389.1821

2012 Johanson Technology, Inc. All Rights Reserved

# High Frequency Ceramic Solutions

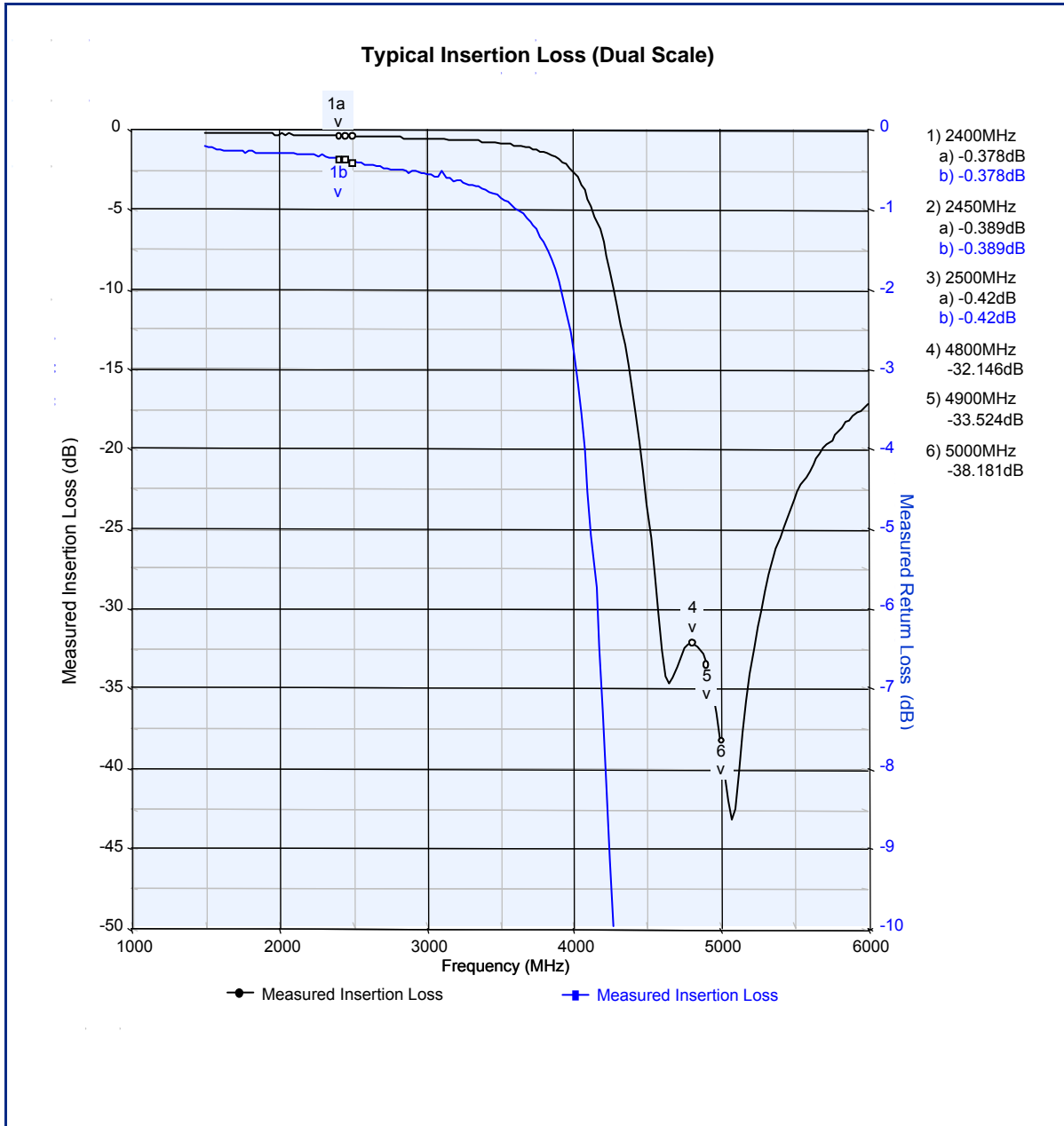
2.45GHz Directional Coupler/Low Pass Filter Combo Passive

P/N 2450CF15A0100

Detail Specification: 01/20/2012

Page 4 of 4

## Typical Electrical Performance (T=25°C)



Johanson Technology, Inc. reserves the right to make design changes without notice.

All sales are subject to Johanson Technology, Inc. terms and conditions.



[www.johansontechnology.com](http://www.johansontechnology.com)

4001 Calle Tecate • Camarillo, CA 93012 • TEL 805.389.1166 FAX 805.389.1821

2012 Johanson Technology, Inc. All Rights Reserved

# Mouser Electronics

Authorized Distributor

Click to View Pricing, Inventory, Delivery & Lifecycle Information:

[Johanson:](#)

[2450CF15A0100E](#)