

mat'l. code				surface ISO 1302				tolerance ISO 406 ISO 1101				projection				product family 58RF																					
ltr				ecn no		dr		date		tolerances unless otherwise specified				 MM scale N/A				title 1mm SPACING FPC/FFC CONNECTOR DOCUMENT LIST (Cat. No. : SFW__R-1/2STE1HLF)																			
A				J10-0337		S.W		2010-11-19		angles																											
B				ELX-J-32971		S.W		2019-3-20		linear				dwg no				sheet 1 of 9				size															
																		10116434								A4											
										dr																		S.WATANABE		2019-3-20							
										enrg																		S.WATANABE		2019-3-20							
										chr																		S-H.THIO		2019-3-20							
														appd				Y.KAMEDA		2019-3-20		type Product Customer Drawing															
sheet index		revision sheet		B 1		B 2		B 3		B 4		B 5		B 6		B 7		B 8		B 9																	

List of "SFW\_\_R-1/2STE1HLF" customer document

DOCUMENT NO.	LIST
GS-12-682	SPEC.
10116434 Sheet2	CAT.NO.TABLE FOR 1mm SPACING SMT CONNECTOR (SFW__R-1/2ST__HLF)
10116434 Sheet3	1mm SPACING SMT CONNECTOR (SFW__R-1ST__HLF)
10116434 Sheet4	1mm SPACING SMT CONNECTOR (SFW__R-2ST__HLF)
10116434 Sheet5	CAT.NO.TABLE FOR PLASTIC TAPE PACKAGED 1mm SPACING SMT CONNECTOR (SFW__R-1/2STE1HLF)
10116434 Sheet6	PLASTIC TAPE PACKAGED 1mm SPACING SMT CONNECTOR (SFW__R-1STE1HLF)
10116434 Sheet7	PLASTIC TAPE PACKAGED 1mm SPACING SMT CONNECTOR (SFW__R-2STE1HLF)
10116434 Sheet8	RECOMMENDED CABLE (FPC) (SFW__R-1/2ST__)
10116434 Sheet9	RECOMMENDED CABLE (FFC) (SFW__R-1/2ST__)
GS-20-129	HANDLING PROCEDURES

## CAT. NO. &amp; DIMENSIONS

NO. OF CONTACTS (n)	CAT. NO.	DIMENSIONS (NOTE2)			
		A ± 0.2	B ± 0.2	C ± 0.2	D ± 0.1
4	SFW4R-1/2ST__HLF	9.8	8.6	3.0	5.3
5	SFW5R-1/2ST__HLF	10.8	9.6	4.0	6.3
6	SFW6R-1/2ST__HLF	11.8	10.6	5.0	7.3
7	SFW7R-1/2ST__HLF	12.8	11.6	6.0	8.3
8	SFW8R-1/2ST__HLF	13.8	12.6	7.0	9.3
9	SFW9R-1/2ST__HLF	14.8	13.6	8.0	10.3
10	SFW10R-1/2ST__HLF	15.8	14.6	9.0	11.3
11	SFW11R-1/2ST__HLF	16.8	15.6	10.0	12.3
12	SFW12R-1/2ST__HLF	17.8	16.6	11.0	13.3
13	SFW13R-1/2ST__HLF	18.8	17.6	12.0	14.3
14	SFW14R-1/2ST__HLF	19.8	18.6	13.0	15.3
15	SFW15R-1/2ST__HLF	20.8	19.6	14.0	16.3
16	SFW16R-1/2ST__HLF	21.8	20.6	15.0	17.3
17	SFW17R-1/2ST__HLF	22.8	21.6	16.0	18.3
18	SFW18R-1/2ST__HLF	23.8	22.6	17.0	19.3
19	SFW19R-1/2ST__HLF	24.8	23.6	18.0	20.3
20	SFW20R-1/2ST__HLF	25.8	24.6	19.0	21.3
21	SFW21R-1/2ST__HLF	26.8	25.6	20.0	22.3
22	SFW22R-1/2ST__HLF	27.8	26.6	21.0	23.3
23	SFW23R-1/2ST__HLF	28.8	27.6	22.0	24.3
24	SFW24R-1/2ST__HLF	29.8	28.6	23.0	25.3
25	SFW25R-1/2ST__HLF	30.8	29.6	24.0	26.3
26	SFW26R-1/2ST__HLF	31.8	30.6	25.0	27.3
27	SFW27R-1/2ST__HLF	32.8	31.6	26.0	28.3
28	SFW28R-1/2ST__HLF	33.8	32.6	27.0	29.3
29	SFW29R-1/2ST__HLF	34.8	33.6	28.0	30.3
30	SFW30R-1/2ST__HLF	35.8	34.6	29.0	31.3

CAT. NO.

SFW (n) R - 1 ST \_\_ HLF

SERIES NAME

NO. OF CONTACTS

RIGHT ANGLE TYPE

FOR FPC/FFC, CONTACT DIRECTION

1. LOWER CONTACT TYPE
2. UPPER CONTACT TYPE

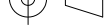

FOR AUTOMATIC MOUNTING (SMT)

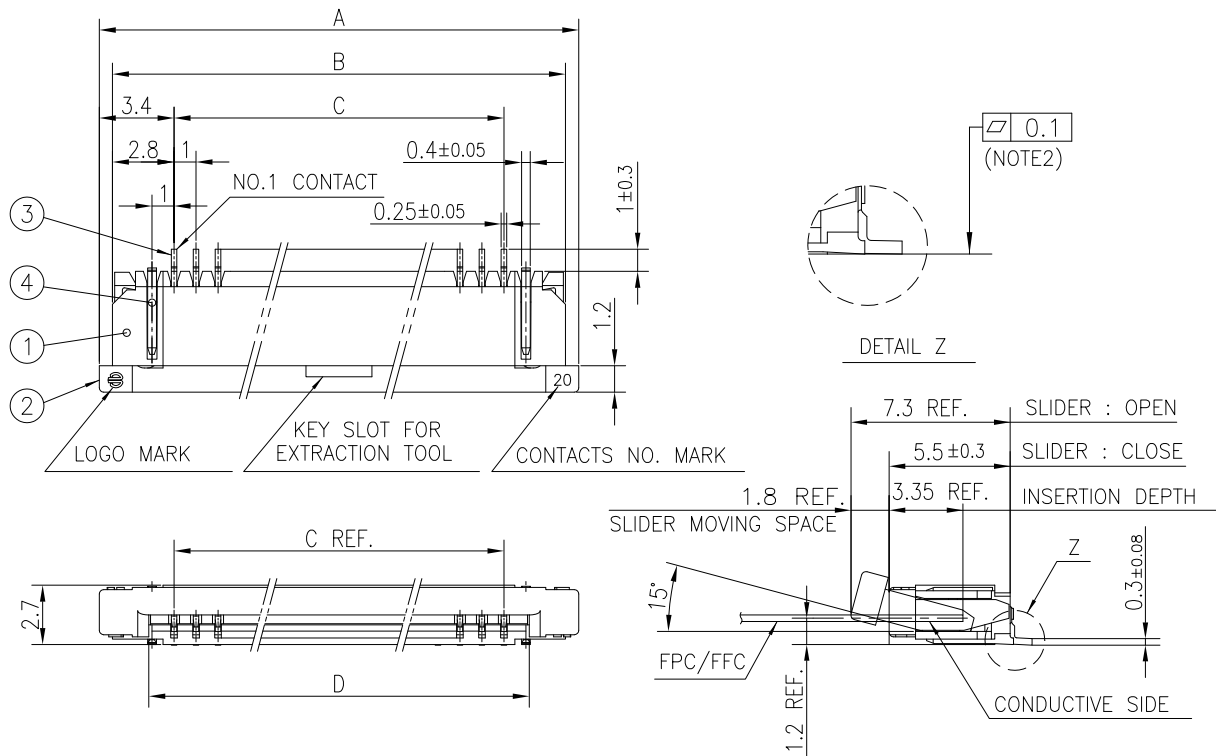
PACKAGE STYLE

HALOGEN AND LEAD FREE

## NOTES

1. THIS PRODUCT IS THE CONNECTOR USED FOR FPC/FFC AND COPS WITH AUTOMATIC MOUNTING (SMT).
2. SEE PART DRAWINGS FOR DIMENSIONS A~D.

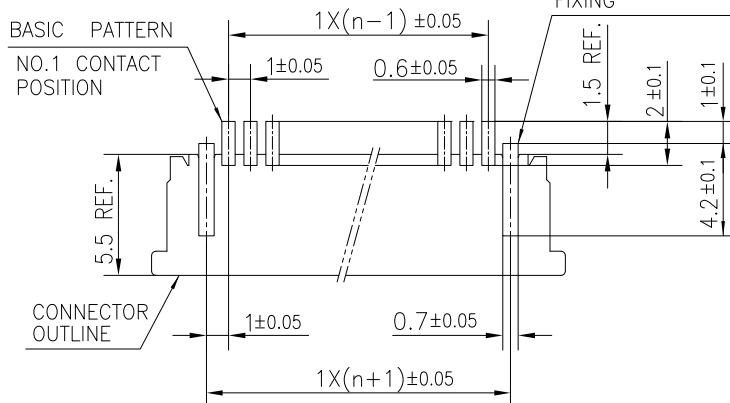
mat'l. code —				surface ISO 1302 ✓			tolerance ISO 406 ISO 1101			projection 		product family 58RF									
ltr	ecn no	dr	date	tolerances unless			otherwise specified					title CAT. NO. TABLE FOR 1mm SPACING SMT CONNECTOR (Cat. No. : SFW__R-1/2ST__HLF)									
B				angles		linear															
									scale N/A		<div>dwg no</div> <div>sheet 2 of 9</div> <div>size</div> <div>10116434</div> <div>A4</div>										
				dr	S.WATANABE		2019-3-20		<div>Amphenol</div> <div>FCI</div>												
				engr	S.WATANABE		2019-3-20														
				chr	S-H.THIO		2019-3-20														
				appd	Y.KAMEDA		2019-3-20				type Product Customer Drawing										
sheet index	revision																				
	sheet																				



PT. NO.	PARTS NAME	MATERIAL	Q'TY	NOTE
1	HOUSING	PPS RESIN GLASS REINFORCED (UL94V-0)	1	COLOR : BLACK (HALOGEN FREE)
2	SLIDER	PPS RESIN GLASS REINFORCED (UL94V-0)	1	COLOR : BLACK (HALOGEN FREE)
3	CONTACT	PHOSPHOR BRONZE	n	PLATING : TIN
4	MOUNTING PLATE		2	

n : NO. OF CONTACTS

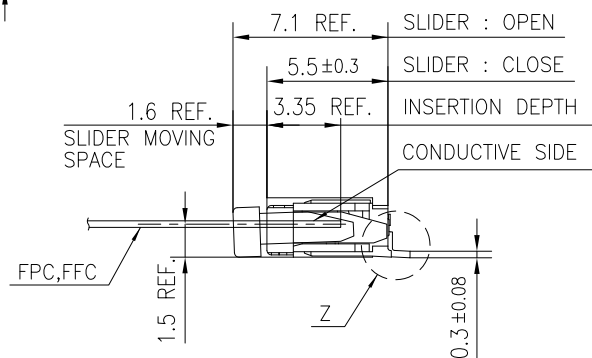
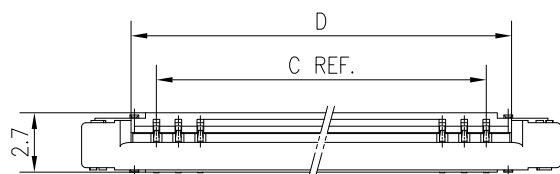
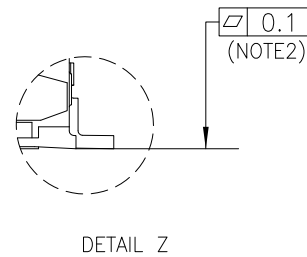
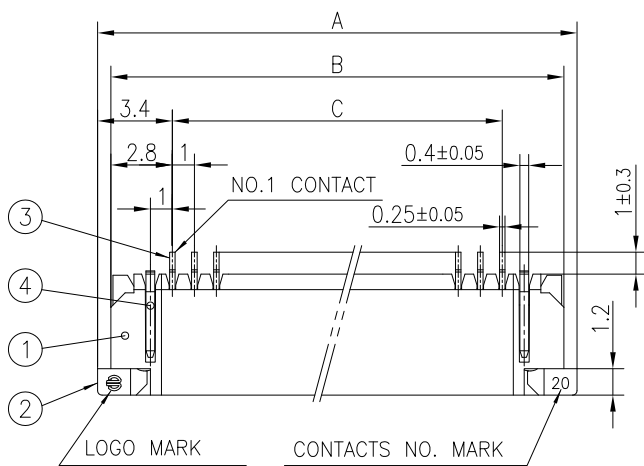
#### RECOMMENDED PC BOARD LAYOUT (COMPONENT SIDE)



#### NOTES

1. THIS PRODUCT IS THE CONNECTOR USED FOR FPC/FFC AND COPEs WITH AUTOMATIC MOUNTING (SMT).
2. FLATNESS FOR CONTACT TERMINAL HOUSING MUST BE WITHIN TOLERANCE IN Z PORTION DETAILED DRAWING.
3. THIS PRODUCT IS LOWER CONTACT TYPE CONNECTOR.
4. THIS PRODUCT MEETS EUROPEAN UNION DIRECTIVES AND OTHER COUNTRY REGULATIONS AS DESCRIBED IN GS-22-008
5. THE HOUSING WILL WITHSTAND EXPOSURE TO 260°C PEAK TEMPERATURE FOR 10 SECONDS IN A REFLOW SOLDERING OVEN.

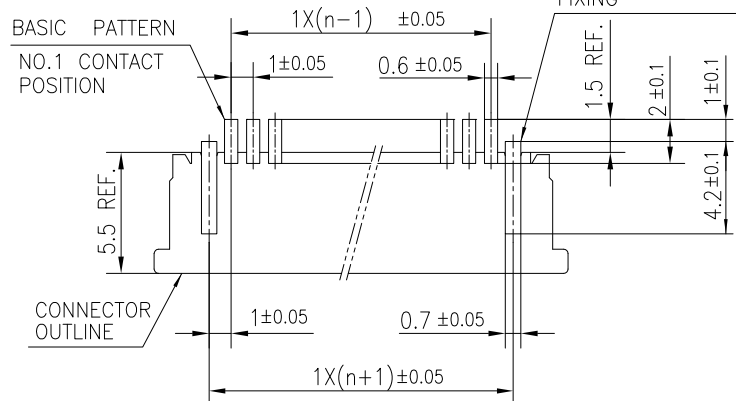
mat'l. code				surface	tolerance		projection	product family			
—				ISO 1302	ISO 406	ISO 1101	⊕	58RF			
ltr	ecn no	dr	date	tolerances unless otherwise specified			MM	title			
B				angles	linear		↔	1mm SPACING SMT CONNECTOR			
					±0.2			(Cat. No. SFW__R-1ST__HLF)			
				dr	S.WATANABE	2019-3-20	Amphenol FCI	dwg no		sheet 3 of 9	size
				engr	S.WATANABE	2019-3-20		10116434			A4
				chr	S-H.THIO	2019-3-20					
				appd	Y.KAMEDA	2019-3-20		type Product Customer Drawing			
sheet index	revision sheet										



PT. NO.	PARTS NAME	MATERIAL	Q'TY	NOTE
1	HOUSING	PPS RESIN GLASS REINFORCED (UL94V-0)	1	COLOR : BLACK (HALOGEN FREE)
2	SLIDER	PPS RESIN GLASS REINFORCED (UL94V-0)	1	COLOR : BLACK (HALOGEN FREE)
3	CONTACT	PHOSPHOR BRONZE	n	PLATING : TIN
4	MOUNTING PLATE		2	

n : NO. OF CONTACTS

#### RECOMMENDED PC BOARD LAYOUT (COMPONENT SIDE)



#### NOTES

- THIS PRODUCT IS THE CONNECTOR USED FOR FPC/FFC AND COPEs WITH AUTOMATIC MOUNTING (SMT).
- FLATNESS FOR CONTACT TERMINAL HOUSING MUST BE WITHIN TOLERANCE IN Z PORTION DETAILED DRAWING.
- THIS PRODUCT IS UPPER CONTACT TYPE CONNECTOR.
- THIS PRODUCT MEETS EUROPEAN UNION DIRECTIVES AND OTHER COUNTRY REGULATIONS AS DESCRIBED IN GS-22-008
- THE HOUSING WILL WITHSTAND EXPOSURE TO 260°C PEAK TEMPERATURE FOR 10 SECONDS IN A REFLOW SOLDERING OVEN.

mat'l. code				surface	tolerance	projection	product family			
—				ISO 1302	ISO 406 ISO 1101		58RF			
ltr	ecn no	dr	date	tolerances unless otherwise specified		MM	title			
B				angles	linear					
							1mm SPACING SMT CONNECTOR			
							(Cat. No. SFW__R-2ST__HLF)			
				dr	S.WATANABE	2019-3-20	Amphenol FCi	dwg no		sheet 4 of 9
				engr	S.WATANABE	2019-3-20		10116434		size
				chr	S-H.THIO	2019-3-20				A4
				appd	Y.KAMEDA	2019-3-20		type		Product Customer Drawing
sheet	revision									
index	sheet									

## CAT. NO. &amp; DIMENSIONS

NO. OF CONTACTS (n)	CAT. NO. (NOTE2)	DIMENSIONS (NOTE3)		
		E ± 5	F ± 0.3	G ± 0.1
4	SFW4R-1/2STE1HLF	20.4	16	—
5	SFW5R-1/2STE1HLF	28.4	24	—
6	SFW6R-1/2STE1HLF	28.4	24	—
7	SFW7R-1/2STE1HLF	28.4	24	—
8	SFW8R-1/2STE1HLF	28.4	24	—
9	SFW9R-1/2STE1HLF	28.4	24	—
10	SFW10R-1/2STE1HLF	28.4	24	—
11	SFW11R-1/2STE1HLF	28.4	24	—
12	SFW12R-1/2STE1HLF	28.4	24	—
13	SFW13R-1/2STE1HLF	36.4	32	28.4
14	SFW14R-1/2STE1HLF	36.4	32	28.4
15	SFW15R-1/2STE1HLF	36.4	32	28.4
16	SFW16R-1/2STE1HLF	36.4	32	28.4
17	SFW17R-1/2STE1HLF	48.4	44	40.4
18	SFW18R-1/2STE1HLF	48.4	44	40.4
19	SFW19R-1/2STE1HLF	48.4	44	40.4
20	SFW20R-1/2STE1HLF	48.4	44	40.4
21	SFW21R-1/2STE1HLF	48.4	44	40.4
22	SFW22R-1/2STE1HLF	48.4	44	40.4
23	SFW23R-1/2STE1HLF	48.4	44	40.4
24	SFW24R-1/2STE1HLF	48.4	44	40.4
25	SFW25R-1/2STE1HLF	48.4	44	40.4
26	SFW26R-1/2STE1HLF	48.4	44	40.4
27	SFW27R-1/2STE1HLF	48.4	44	40.4
28	SFW28R-1/2STE1HLF	60.4	56	52.4
29	SFW29R-1/2STE1HLF	60.4	56	52.4
30	SFW30R-1/2STE1HLF	60.4	56	52.4

CAT. NO.

SFW (n) R - 1 ST E1 HLF

SERIES NAME

NO. OF CONTACTS

RIGHT ANGLE TYPE

FOR FPC/FFC, CONTACT DIRECTION

1. LOWER CONTACT TYPE
2. UPPER CONTACT TYPE

FOR AUTOMATIC MOUNTING (SMT)

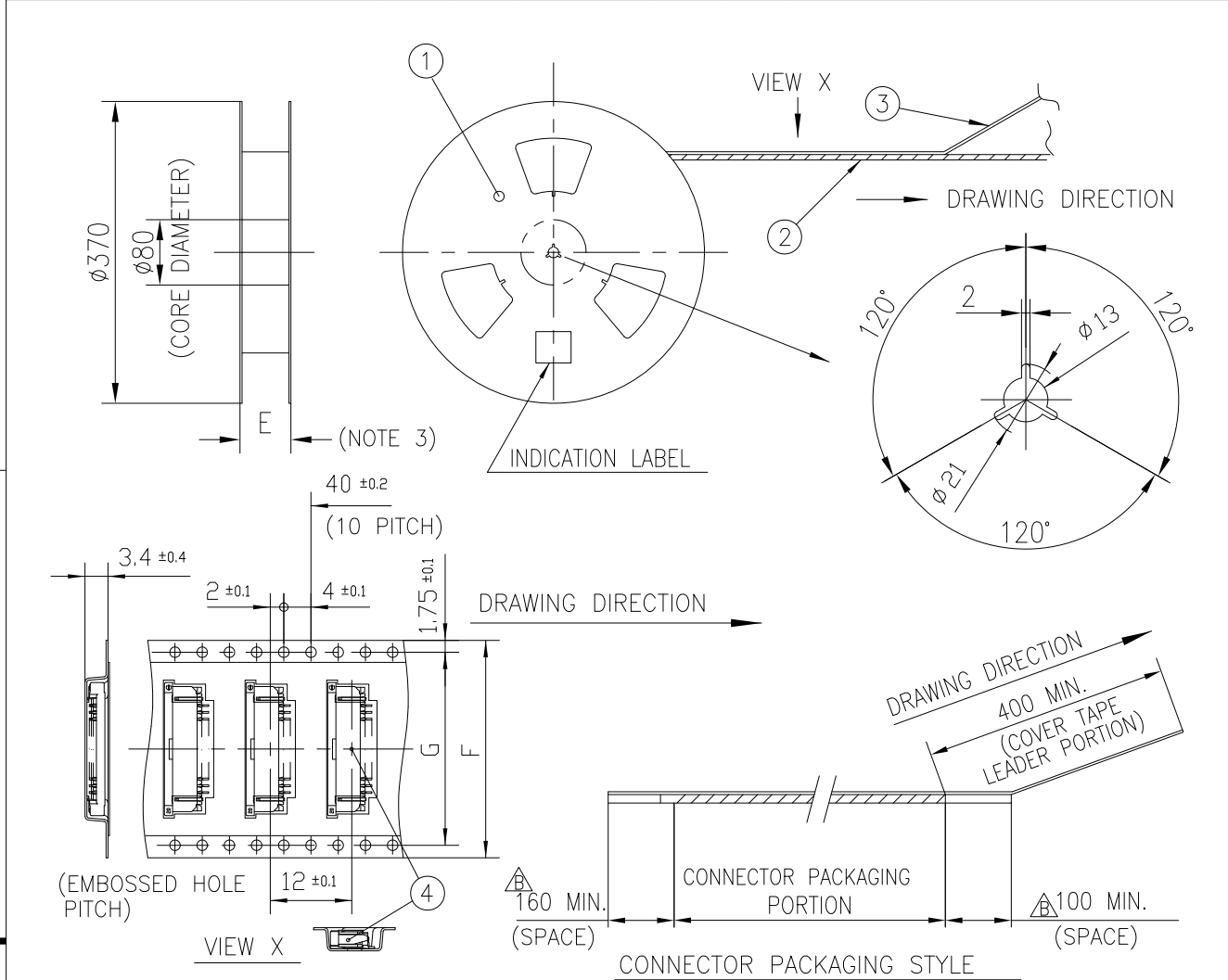
TAPE PACKAGING

HALOGEN AND LEAD FREE

## NOTES

1. THIS PRODUCT IS THE CONNECTOR USED FOR FPC/FFC AND COPELS WITH AUTOMATIC MOUNTING (SMT).
2. THIS CATALOG NO. INDICATES PLASTIC TAPE PACKAGED CONNECTOR.
3. SEE PART DRAWINGS FOR DIMENSIONS E~G.

mat'l. code				surface ISO 1302		tolerance ISO 406 ISO 1101		projection		product family 58RF													
ltr	ecn no	dr	date	tolerances unless otherwise specified							title												
B				angles		linear		MM			CAT. NO. TABLE FOR PLASTIC TAPE PACKAGED 1mm SPACING SMT CONNECTOR (Cat. No. SFW__R-1/2STE1HLF)												
								scale N/A		dwg no sheet 5 of 9 size													
				dr	S.WATANABE	2019-3-20				10116434 A4													
				engr	S.WATANABE	2019-3-20																	
				chr	S-H.THIO	2019-3-20																	
				appd	Y.KAMEDA	2019-3-20				type Product Customer Drawing													
sheet index		revision sheet																					

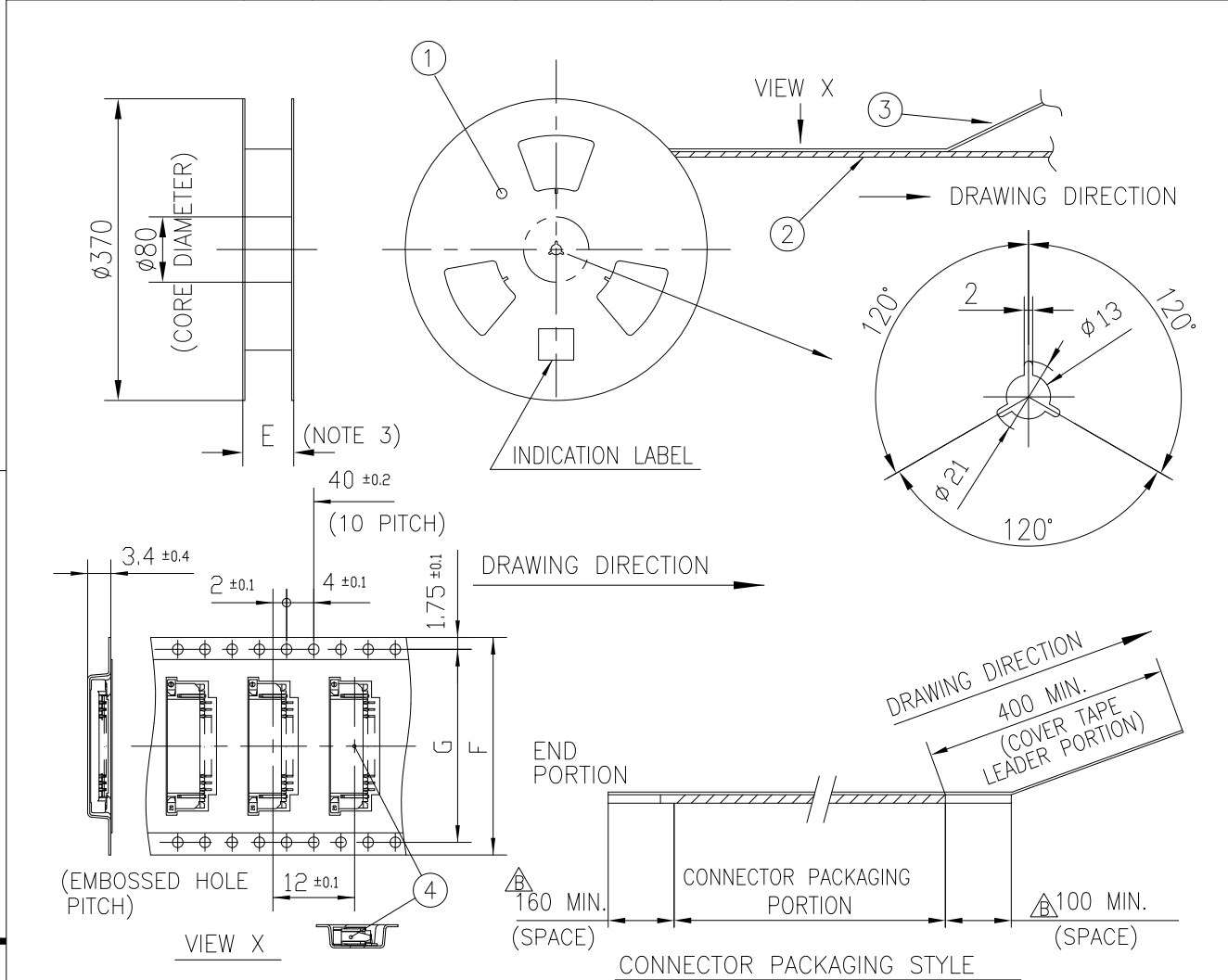


PT. NO.	PARTS NAME	CAT. NO.	MATERIAL	Q'TY	NOTE
1	REEL	_____	CARDBOARD	1	COLOR : WHITE
2	PLASTIC (EMBOSS) TAPE	_____	△ PS or A-PET	_____	COLOR : TRANSPARENCY
3	COVER	_____	△ POLYESTER,POLYETHYLENE	_____	COLOR : TRANSPARENCY
4	CONNECTOR	SFW__R-1ST__HLF	SEE SHEET 3	2000	LOWER CONTACT TYPE

## NOTES

- THIS IS PLASTIC TAPE PACKAGED CONNECTOR USED FOR FPC/FFC AND CYPES WITH AUTOMATIC MOUNTING (SMT).
- SEE JIS C 0806 (PACKING OF ELECTRONIC COMPONENTS ON CONTINUOUS TAPES (SURFACE MOUNTING DEVICES)) FOR SHAPE AND DIMENSIONS OF PLASTIC (EMBOSS) TAPE AND REEL.
- E DIMENSION IS PORTION OF THE CORE.

mat'l. code				surface	tolerance		projection	product family			
—				ISO 1302	ISO 406	ISO 1101	⊕	58RF			
ltr	ecn no	dr	date	tolerances unless otherwise specified			MM	title			
B				angles	linear		scale N/A	PLASTIC TAPE PACKAGED			
					±5			1mm SPACING SMT CONNECTOR			
								(Cat. No. SFW__R-1STE1HLF)			
				dr	S.WATANABE	2019-3-20	Amphenol FCi	dwg no		sheet 6 of 9	size
				engr	S.WATANABE	2019-3-20		10116434			△4
				chr	S-H.THIO	2019-3-20					
				appd	Y.KAMEDA	2019-3-20					
sheet	revision							type			
index	sheet							Product Customer Drawing			



PT. NO.	PARTS NAME	CAT. NO.	MATERIAL	Q'TY	NOTE
1	REEL	_____	CARDBOARD	1	COLOR : WHITE
2	PLASTIC (EMBOSS) TAPE	_____	△ PS or A-PET	_____	COLOR : TRANSPARENCY
3	COVER	_____	△ POLYESTER,POLYETHYLENE	_____	COLOR : TRANSPARENCY
4	CONNECTOR	SFW__R-2ST__HLF	SEE SHEET 4	2000	UPPER CONTACT TYPE

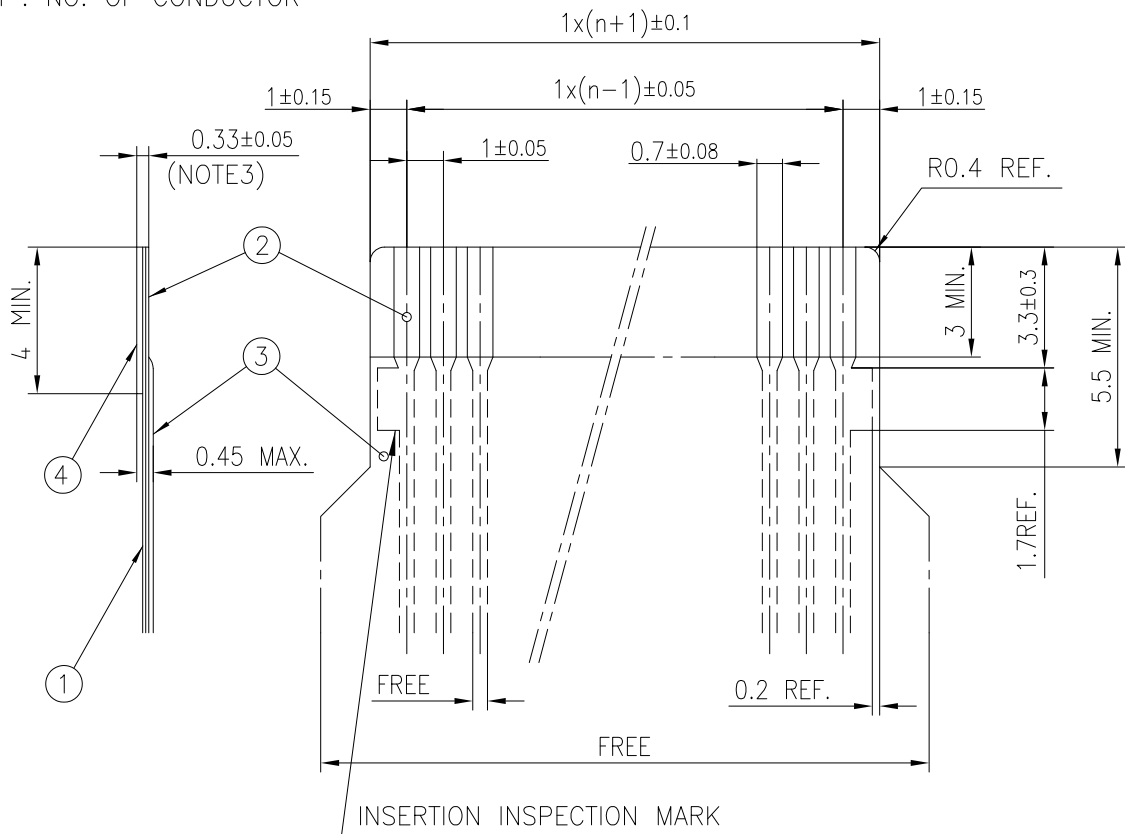
## NOTES

- THIS IS PLASTIC TAPE PACKAGED CONNECTOR USED FOR FPC/FFC AND CYPES WITH AUTOMATIC MOUNTING (SMT).
- SEE JIS C 0806 (PACKING OF ELECTRONIC COMPONENTS ON CONTINUOUS TAPES (SURFACE MOUNTING DEVICES)) FOR SHAPE AND DIMENSIONS OF PLASTIC (EMBOSS) TAPE AND REEL.
- E DIMENSION IS PORTION OF THE CORE.

mat'l. code				surface	tolerance		projection	product family			
—				ISO 1302	✓	ISO 406 ISO 1101	⊕	58RF			
ltr	ecn no	dr	date	tolerances unless otherwise specified			MM	title			
B				angles	linear		←				
							scale N/A	1mm SPACING SMT CONNECTOR			
								(Cat. No. SFW__R-2STE1HLF)			
				dr	S.WATANABE	2019-3-20	Amphenol FCi	dwg no		sheet 7 of 9	size
				engr	S.WATANABE	2019-3-20		10116434			△A4
				chr	S-H.THIO	2019-3-20					
				appd	Y.KAMEDA	2019-3-20					
sheet index	revision sheet							type Product Customer Drawing			

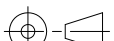


## RECOMMENDED CABLE (FPC)

n : NO. OF CONDUCTOR



PT. NO.	PARTS NAME	MATERIAL	THICKNESS (um)
1	BASE FILM	POLYIMIDE OR POLYESTER OR EQUAL	25
2	CONDUCTOR	COPPER FOIL (PLATING: TIN OR SOLDER 1um MIN.)	35
3	OVERLAY	POLYIMIDE OR POLYESTER OR EQUAL	—
4	SUPPORTING TAPE	POLYESTER OR POLYIMIDE OR EQUAL	188

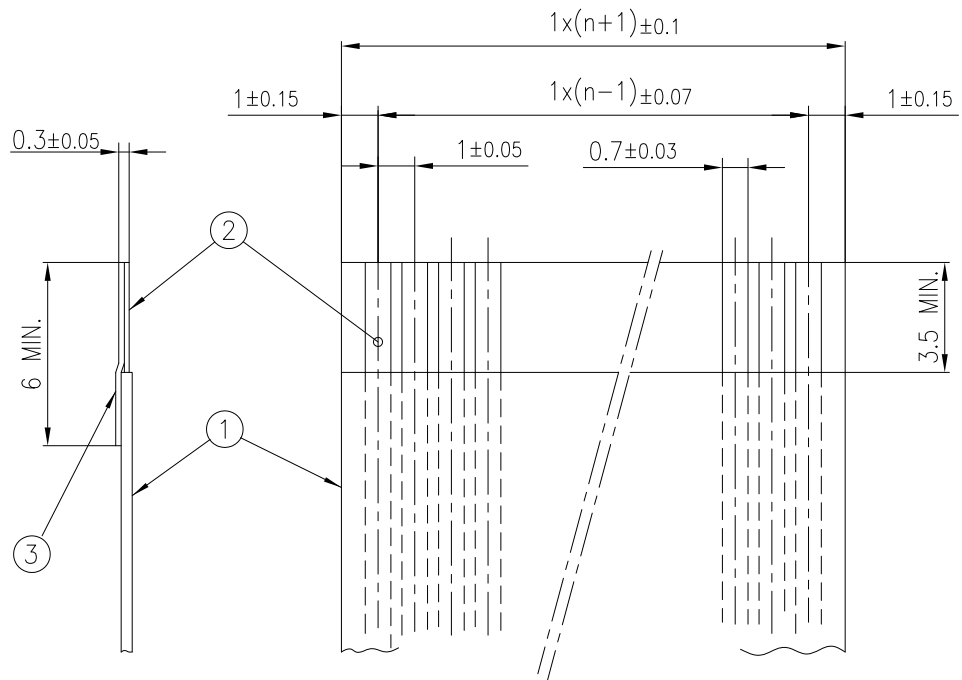
- NOTES
1. NO BURR AT EACH PORTION.
  2. NO PEELING IN COMMON USE.
  3. TOTAL THICKNESS LIMIT OF EACH MATERIAL (INCLUDING ADHESIVE AGENT) IS SPECIFIED.

mat'l. code —				surface ISO 1302 ✓		tolerance ISO 406 ISO 1101		projection 		product family 58RF									
ltr	ecn no	dr	date	tolerances unless		otherwise specified				title RECOMMENDED CABLE (Cat. No. SFW__R-1/2__)									
B				angles	linear														
								scale N/A		dwg no sheet 8 of 9 10116434 size A4									
				dr	S.WATANABE	2019-3-20													
				engr	S.WATANABE	2019-3-20													
				chr	S-H.THIO	2019-3-20													
				appd	Y.KAMEDA	2019-3-20				type Product Customer Drawing									
sheet index	revision sheet																		



## RECOMMENDED CABLE (FFC)

n : NO. OF CONDUCTOR



PT. NO.	PARTS NAME	MATERIAL	NOTE
1	INSULATOR	FLAME RESISTING POLYESTER OR EQUAL	_____
2	CONDUCTOR	COPPER FOIL	PLATING:TIN OR SOLDER 1um MIN.
3	SUPPORTING TAPE	FLAME RESISTING POLYESTER OR EQUAL	_____

## NOTES

1. NO BURR AT EACH PORTION.
2. NO PEELING IN COMMON USE.

mat'l. code				surface ISO 1302		tolerance ISO 406 ISO 1101		projection		product family 58RF																	
ltr				ecn no		dr		date		tolerances unless otherwise specified		angles		linear		MM		title									
B																		RECOMMENDED CABLE									
																		(Cat. No. SFW__R-1/2__)									
																		dwg no									
																		sheet 9 of 9									
																		10116434									
																		A4									
																		type Product Customer Drawing									
sheet index				revision sheet																							

# Mouser Electronics

Authorized Distributor

Click to View Pricing, Inventory, Delivery & Lifecycle Information:

[FCI / Amphenol:](#)

[SFW11R-2STE1HLF](#) [SFW10R-2STE1HLF](#)