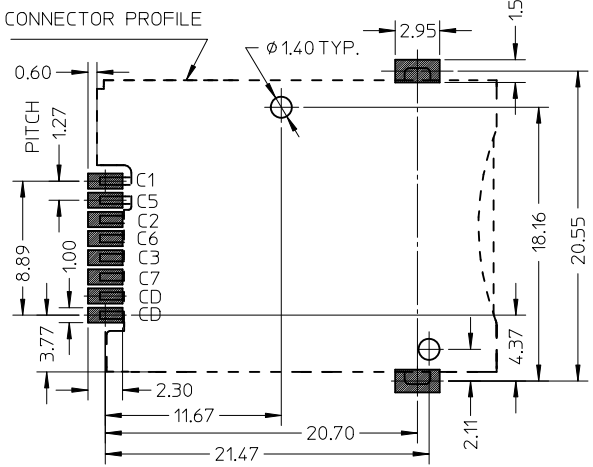
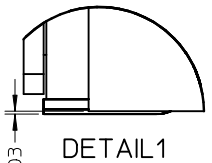
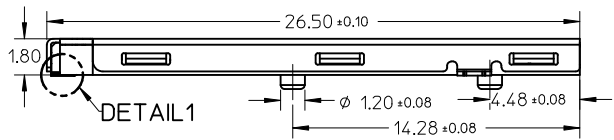


- NOTES:
- 1 FINISH:
- 1-1 TERMINAL :
    - 50-200μ NICKEL UNDER PLATED
    - 30μ MIN GOLD PLATING ON CONTACT AREA
    - 3μ MIN GOLD FLASH ON SOLDERING AREA
  - 1-2 SHELL :
    - 50-200μ NICKEL UNDER PLATED
    - 3μ MIN GOLD FLASH ON SOLDERING AREA
  - 1-3 DETECT PIN :
    - 50-200μ NICKEL UNDER PLATED
    - 3μ MIN GOLD PLATING ON CONTACT AREA
    - 3μ MIN GOLD FLASH ON SOLDERING AREA
  - 1-4 HOUSING:G/F 45%.UL94V-0.BLACK
  - 1-5 HEART CAM :G/F 30%.UL94V-0.BLACK
  - 2 SOLDER TAIL COPLANARITY:0.08MM MAX.
  - 3 TERMINAL TIP MUST SINK INTO HOUSING
  - 4 PRODUCT COMPLIANT TO ROHS DIRECTIVE 2002/95/EC AND ELV DIRECTIVE 2000/53/EC
  - 5 DETECT SWITCH: INSERT CARD=ON (NORMAL=OPEN)
  - 6 SPRING RISE UP DURING PUSH-PUSH PERIOD



NO.	DESCRIPTION	Q'TY	MATERIAL
1	HOUSING	1	HIGH TEMPERATURE THERMOPLASTIC
2	TERMINAL	6	COPPER ALLOY
3	DETECT PIN LOWER	1	COPPER ALLOY
4	DETECT PIN UPPER	1	COPPER ALLOY
5	SHELL	1	STAINLESS STEEL
6	COIL SPRING	1	PIANO WIRE
7	HEART CAM	1	NYLON
8	CAM PIN	1	STAINLESS STEEL



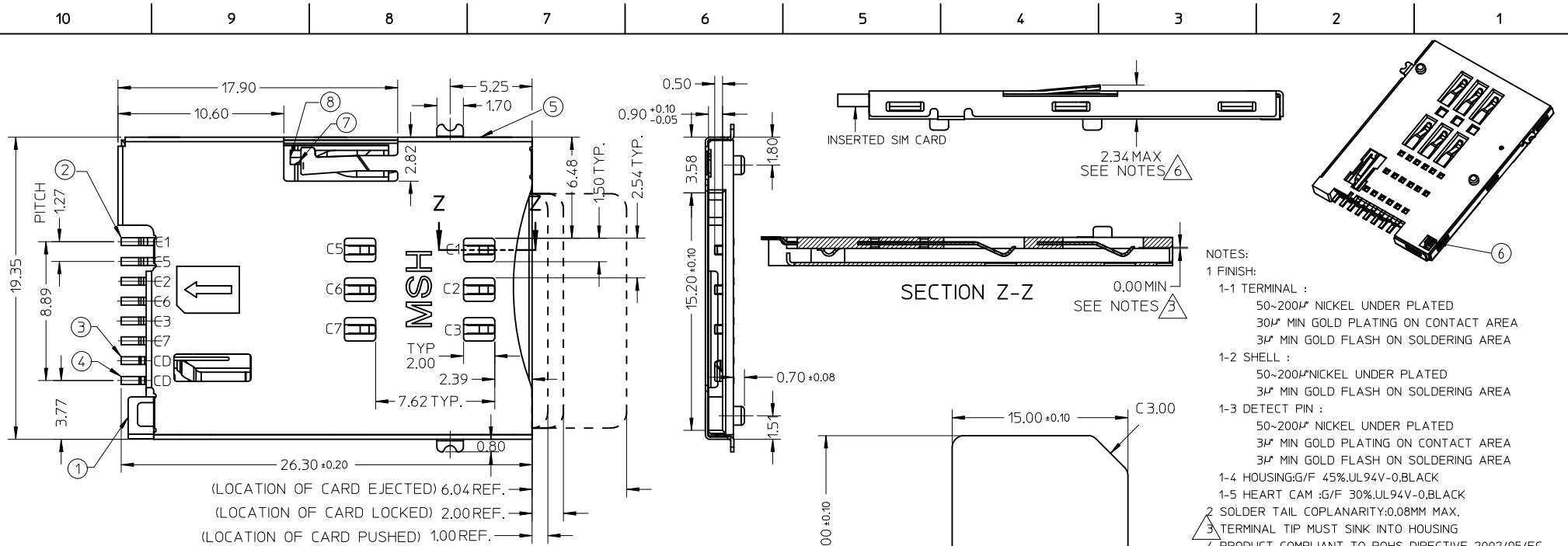
RECOMMENDED PCB LAYOUT TOLERANCE +/-0.05MM

NEW DIM TOL CTRL	EC NO: S2011-0880	2011/04/13	DRW:KHLIM	2011/04/15	CHKD:JIAN02	2011/05/27	APPR:SKTOH
REV	DESCRIPTION						
T1							

QUALITY SYMBOLS	GENERAL TOLERANCES (UNLESS SPECIFIED)	DIMENSION STYLE	SCALE	DESIGN UNITS	THIRD ANGLE PROJECTION
F <sub>0</sub> =0	4 PLACES ± --- ± ---	MM ONLY	NTS	METRIC	
F <sub>C</sub> =0	3 PLACES ± --- ± ---				
F <sub>P</sub> =0	2 PLACES ± 0.15 ± ---				
	1 PLACE ± --- ± ---				
	ANGULAR ± ---°				
	DRAFT WHERE APPLICABLE MUST REMAIN WITHIN DIMENSIONS				

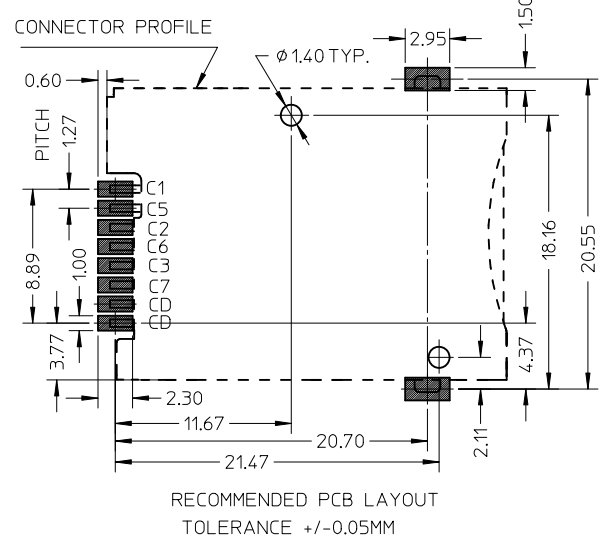
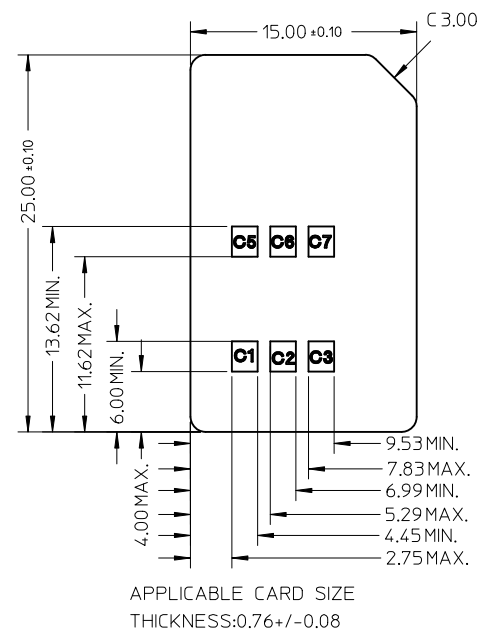
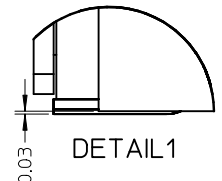
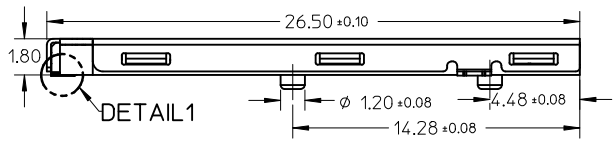
DRAWN BY	DATE	TITLE
LHSHEN	2007/07/09	
CHECKED BY	DATE	
XUXIANG	2007/08/30	
APPROVED BY	DATE	
HWWANG	2007/08/30	
MATERIAL NO.		
475531001		
SIZE	THIS DRAWING CONTAINS INFORMATION THAT IS PROPRIETARY TO MOLEX INCORPORATED AND SHOULD NOT BE USED WITHOUT WRITTEN PERMISSION	
A3		

PUSH PUSH 6 PINS SIM WITH DETECT PIN&POST SALES DRAWING		MOLEX INCORPORATED	
DOCUMENT NO.	SD-47553-101	SHEET NO.	1 OF 1



- NOTES:
- 1 FINISH:
- 1-1 TERMINAL :
    - 50~200μ NICKEL UNDER PLATED
    - 30μ MIN GOLD PLATING ON CONTACT AREA
    - 3μ MIN GOLD FLASH ON SOLDERING AREA
  - 1-2 SHELL :
    - 50~200μ NICKEL UNDER PLATED
    - 3μ MIN GOLD FLASH ON SOLDERING AREA
  - 1-3 DETECT PIN :
    - 50~200μ NICKEL UNDER PLATED
    - 3μ MIN GOLD PLATING ON CONTACT AREA
    - 3μ MIN GOLD FLASH ON SOLDERING AREA
  - 1-4 HOUSING:G/F 45%.UL94V-0.BLACK
  - 1-5 HEART CAM :G/F 30%.UL94V-0.BLACK
  - 2 SOLDER TAIL COPLANARITY:0.08MM MAX.
  - 3 TERMINAL TIP MUST SINK INTO HOUSING
  - 4 PRODUCT COMPLIANT TO ROHS DIRECTIVE 2002/95/EC AND ELV DIRECTIVE 2000/53/EC
  - 5 DETECT SWITCH: INSERT CARD=ON (NORMAL=OPEN)
  - 6 SPRING RISE UP DURING PUSH-PUSH PERIOD

NO.	DESCRIPTION	Q'TY	MATERIAL
1	HOUSING	1	HIGH TEMPERATURE THERMOPLASTIC
2	TERMINAL	6	COPPER ALLOY
3	DETECT PIN LOWER	1	COPPER ALLOY
4	DETECT PIN UPPER	1	COPPER ALLOY
5	SHELL	1	STAINLESS STEEL
6	COIL SPRING	1	PIANO WIRE
7	HEART CAM	1	NYLON
8	CAM PIN	1	STAINLESS STEEL



NEW DIM TOL CTRL	EC NO: S2011-0880	2011/04/13	DRW:KHLIM	2011/04/15	CHKD:JTAN02	2011/05/27	APPR:SKTOH
REV	DESCRIPTION						
T1							

QUALITY SYMBOLS	$F_{\text{S}}=0$	
	$F_{\text{C}}=0$	
	$F_{\text{P}}=0$	
	$F_{\text{A}}=0$	
	$F_{\text{R}}=0$	
GENERAL TOLERANCES (UNLESS SPECIFIED)	mm	INCH
	4 PLACES ± ---	± ---
DIMENSION STYLE	mm ONLY	
	DRAWN BY	DATE
DRAFT WHERE APPLICABLE MUST REMAIN WITHIN DIMENSIONS	3 PLACES ± ---	± ---
	2 PLACES ± 0.15	± ---
DRAFT WHERE APPLICABLE MUST REMAIN WITHIN DIMENSIONS	1 PLACE ± ---	± ---
	ANGULAR ± ---°	

DIMENSION STYLE		SCALE	DESIGN UNITS	THIRD ANGLE PROJECTION
MM ONLY		NTS	METRIC	
DRAWN BY	DATE	TITLE		
LHSHEN	2007/07/09	PUSH PUSH 6 PINS SIM WITH DETECT PIN&POST SALES DRAWING		
CHECKED BY	DATE	MOLEX INCORPORATED		
XUXIANG	2007/08/30	DOCUMENT NO. SD-47553-101		
APPROVED BY	DATE	SHEET NO. 1 OF 1		
HWWANG	2007/08/30			
MATERIAL NO.	475531001			

DRAWN BY		DATE	TITLE	
LHSHEN		2007/07/09	PUSH PUSH 6 PINS SIM WITH DETECT PIN&POST SALES DRAWING	
CHECKED BY		DATE	MOLEX INCORPORATED	
XUXIANG		2007/08/30	DOCUMENT NO. SD-47553-101	
APPROVED BY		DATE	SHEET NO. 1 OF 1	
HWWANG		2007/08/30		
MATERIAL NO.		475531001		