

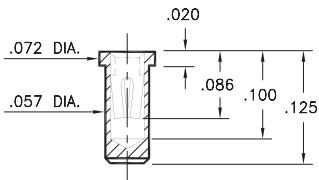
PIN RECEPTACLES

FOR .015" - .025" DIAMETER PINS

0669

0669-0-15-XX-30-XX-10-0

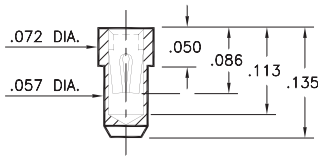
Solder mount in .060 min. mounting hole
Also available on 16mm wide carrier tape:
1,700 parts per 13" reel
See page 194.5 for Tape & Reel details



0670

0670-0-15-XX-30-XX-10-0

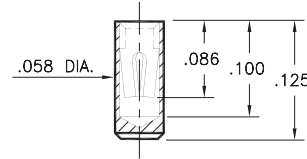
Solder mount in .060 min. mounting hole
Also available on 16mm wide carrier tape:
2,000 parts per 13" reel
See page 194.5 for Tape & Reel details



0673

0673-0-15-XX-30-XX-10-0

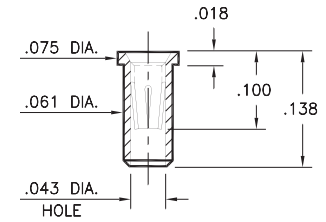
Surface mount
Also available on 16mm wide carrier tape:
2,300 parts per 13" reel
See page 194.6 for Tape & Reel details



0666

0666-0-15-XX-32-XX-10-0

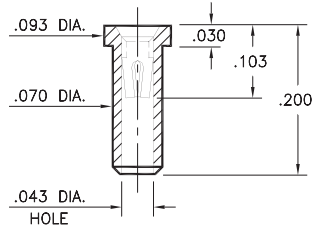
Solder mount in .064 min. mounting hole
Also available on 16mm wide carrier tape:
2,000 parts per 13" reel
See page 194.7 for Tape & Reel details



0341

0341-0-15-XX-30-XX-10-0

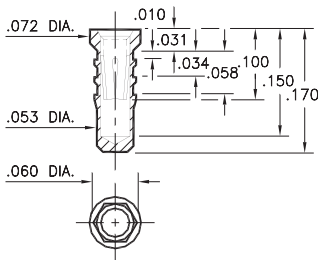
Solder mount in .073 mounting hole
Also available on 12mm wide carrier tape:
1,400 parts per 13" reel
See page 194.5 for Tape & Reel details



0252

0252-0-15-XX-32-XX-10-0

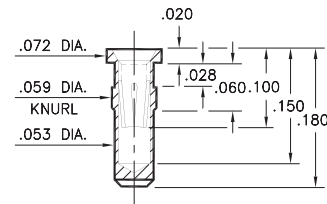
Hex press-fit in .057 plated through-hole



0678

0678-0-15-XX-32-XX-10-0

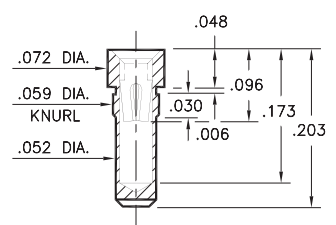
Press-fit in .057 mounting hole



0676

0676-0-15-XX-30-XX-10-0

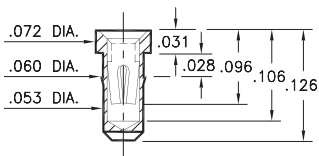
Press-fit in .057 mounting hole



0697

0697-0-15-XX-30-XX-10-0

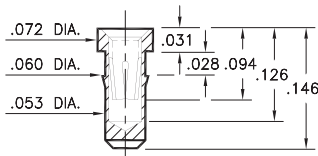
Press-fit in .057 mounting hole



0668

0668-0-15-XX-30-XX-10-0

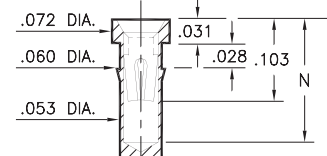
Press-fit in .057 mounting hole



0253/1033

XXX3-0-15-XX-30-XX-10-0

Press-fit in .057 mounting hole



Basic Part Number	Length L	Depth N
0253-0	.173	.148
1033-0	.203	.162

SPECIFICATIONS:

Shell Material: Brass Alloy 360, 1/2 Hard

Contact Material: Beryllium Copper Alloy 172, HT

Dimensions: Inches

Tolerances On: Lengths: ±.005

Diameters: ±.002

Angles: ± 2°



ORDER CODE: XXXX - X - XX - XX - XX - XX - 10 - 0

BASIC PART #

SPECIFY SHELL FINISH:

01 200 μ" TIN/LEAD OVER NICKEL

◆ 80 200 μ" TIN OVER NICKEL (RoHS)

◆ 15 10 μ" GOLD OVER NICKEL (RoHS)

SPECIFY CONTACT FINISH:

02 100 μ" TIN/LEAD OVER NICKEL

◆ 84 100 μ" TIN OVER NICKEL (RoHS)

◆ 27 30 μ" GOLD OVER NICKEL (RoHS)

SELECT CONTACT:

#30 or #32 CONTACT (DATA ON PAGE 253)

(For alternate contact choices, see groups B and C on page 248)

