

DESCRIPTION	MATERIAL	FINISH
BODY	BRASS	NICKEL
PIN	BeCu	GOLD
INSULATION	PTFE	N/A

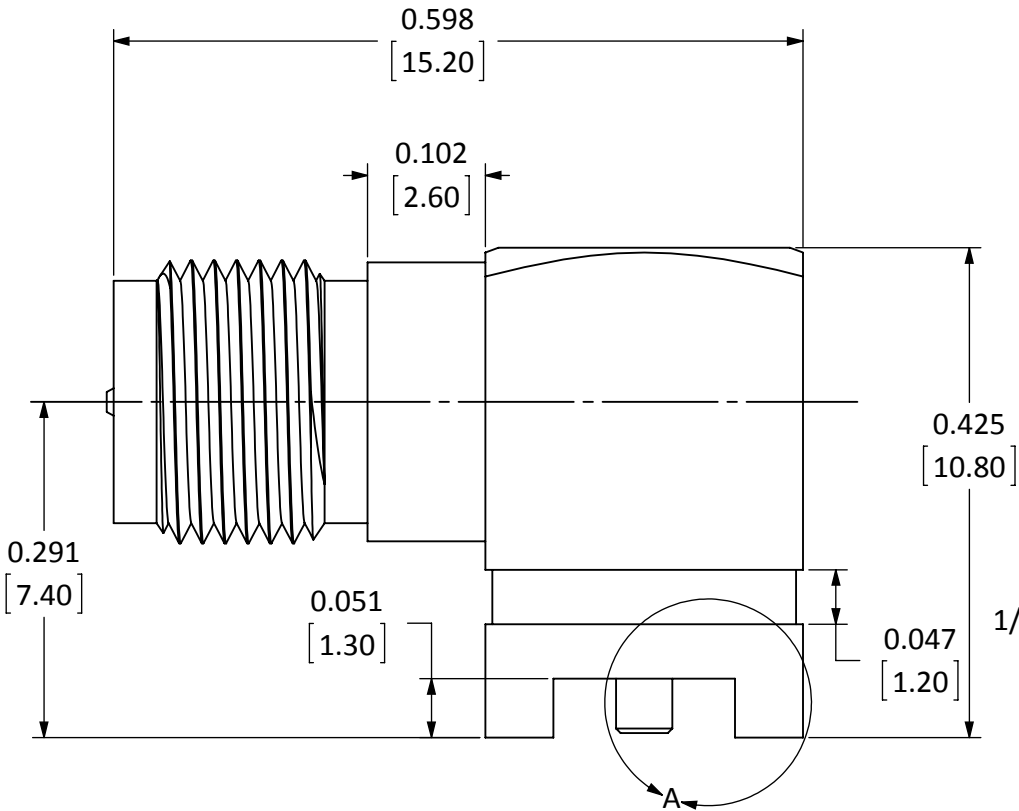
REVISIONS			
REV	DESCRIPTION	DATE	APPV
B	ADDEDNEW TITLE BLOCK; UPDATED FOOTPRINT	25-APR-12	SAH
C	UPDATED MATERIALS; UPDATED THREADS FROM 2B TO 2A	10-JUL-12	SAH
D	ADDED PIN TO PCB DIMENSION	17-OCT-12	SAH
E	ADDED CONTANT TO STANDOFF DIMENSION; UPDATED NOTE 3; UPDATED VARIOUS DIMENSIONS	3-MAY-16	SAH

D

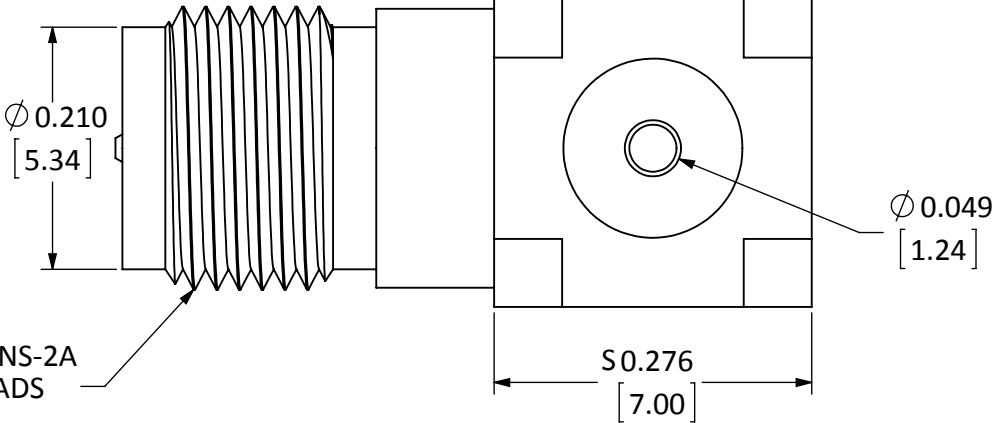
C

B

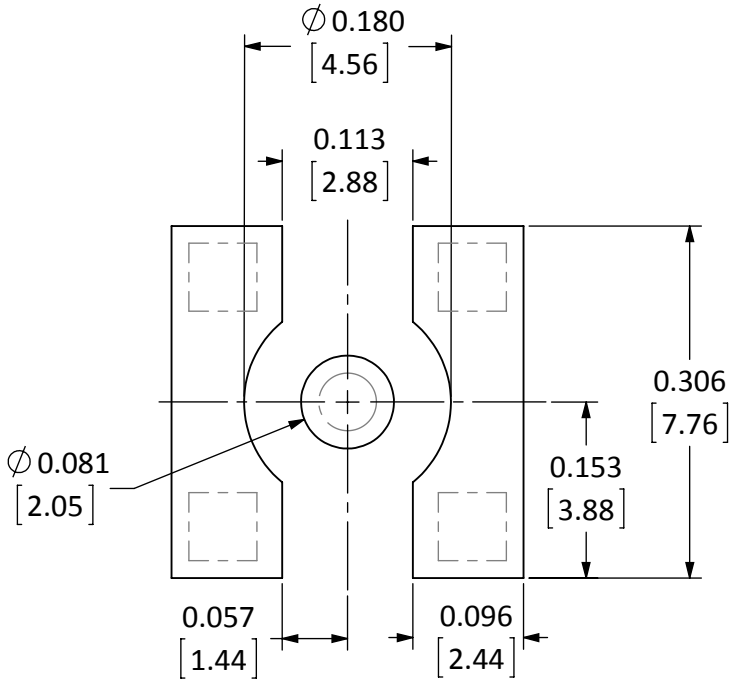
A



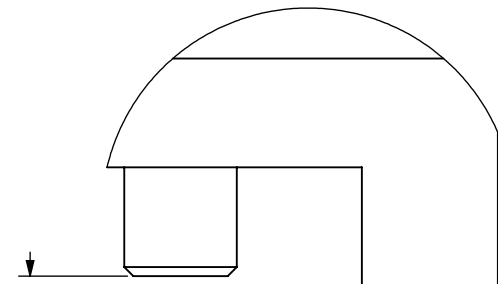
SIDE VIEW



BOTTOM VIEW



RECOMMENDED FOOTPRINT



DETAIL A
SCALE 12 : 1

0.004
0.000
[0.10]
[0.00]
CENTER CONTACT TO MOUNTING PLANE STAND-OFF

- NOTES: (UNLESS OTHERWISE SPECIFIED)
1. ALL DIMENSIONS ARE IN INCHES [mm].
 2. DIMENSIONS APPLY AFTER FINISHING.
 3. MANUFACTURE TO BE COMPLIANT WITH EU RoHS DIRECTIVE, USE MATERIALS THAT DO NOT CONTAIN REACH SUBSTANCES OF VERY HIGH CONCERN >1000ppm, AND USE DRC CONFLICT-FREE SOURCED MATERIALS.
 4. SAFETY BREAK ALL SHARP CORNERS AND EDGES .02 MAXIMUM.

WARNING: THIS DRAWING CONTAINS PROPRIETARY INFORMATION THAT IS THE SOLE PROPERTY OF LINX TECHNOLOGIES, AND SHALL BE TREATED AS SUCH. NO DISCLOSURE OR REPRODUCTION OF THIS DOCUMENT IS PERMITTED, IN WHOLE OR IN PART, WITHOUT THE EXPRESS WRITTEN PERMISSION OF LINX TECHNOLOGIES OR ITS DESIGNATED AGENTS.				Linx 159 ORT LANE MERLIN, OR 97532	
MATERIAL:		INTERPRET DIMENSIONS AND TOLERANCES PER ASME Y14.5.		PROJECTION: 	
FINISH:		SURFACE FINISH: $\sqrt{}$ ANGLES: $\pm 1^\circ$ TOLERANCES: .X $\pm .1$.XX $\pm .01$.XXX $\pm .005$		SIZE DWG. NO. REV	
		DRAWN: B.MURPHY DT: 25-APR-12		B CONREVSMA002-SMD E	
		ENGR: S.HOGAN DT: 25-APR-12		SCALE: 6:1 DO NOT SCALE DRAWING SHEET 1 OF 1	

D

C

B

A

Mouser Electronics

Authorized Distributor

Click to View Pricing, Inventory, Delivery & Lifecycle Information:

[Linx Technologies:](#)

[CONREVSMA002-SMD](#)