

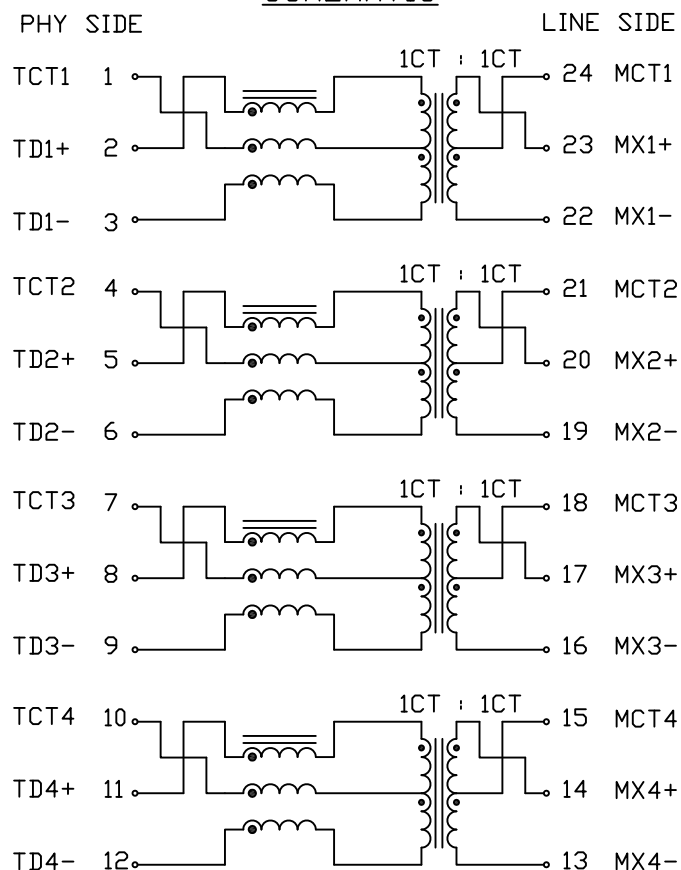
PRELIMINARY

ELECTRICAL CHARACTERISTICS @25°C

RoHS



SCHEMATIC



URNS RATIO

(2-1-3) : (23-24-22)
(5-4-6) : (20-21-19)
(8-7-9) : (17-18-16)
(11-10-12) : (14-15-13)

1CT : 1CT ±2%
1CT : 1CT ±2%
1CT : 1CT ±2%
1CT : 1CT ±2%

POLARITY

DCL

PER DOT CONVENTION

100kHz, 100mV
180uH MIN WITH 8mA DC BIAS
120uH MIN WITH 19mA DC BIAS

RETURN LOSS

1MHz-100MHz
100MHz-300MHz

-20 dB Min
-20+16LOG(f/100MHz) dB MIN

HIPOT (Isolation Voltage):

100% OF PRODUCTION TESTED TO COMPLY WITH
IEEE 802.3 ISOLATION REQUIREMENTS.
NOTE: PORT-TO PORT ISOLATION NOT INCLUDED.
BALANCED DC LINE CURRENT


2250 VDC

720 mA MAX. @ 57 VDC CONTINUOUS
1.2mA MAX. @ 57 VDC FOR 200 MILLISECONDS

OPERATING TEMPERATURE: -40 TO 85°C

MEETS 5G PERFORMANCE REQUIREMENTS AS PER IEEE 802.3bz

ORIGINATED BY		DATE	TITLE	PART NO. / DRAWING NO.	STANDARD DIM.		[] METRIC DIM. AS REF.	
Alice Pang		2016-10-28		S558-5500-JV	TOL. IN INCH		UNIT : INCH [mm]	
DRAWN BY		DATE		FILE NAME	.X		SCALE : N/A	
JB		2017-08-10		S5585500JVPA.DWG	.XX		SIZE : A4	
				.XXX				



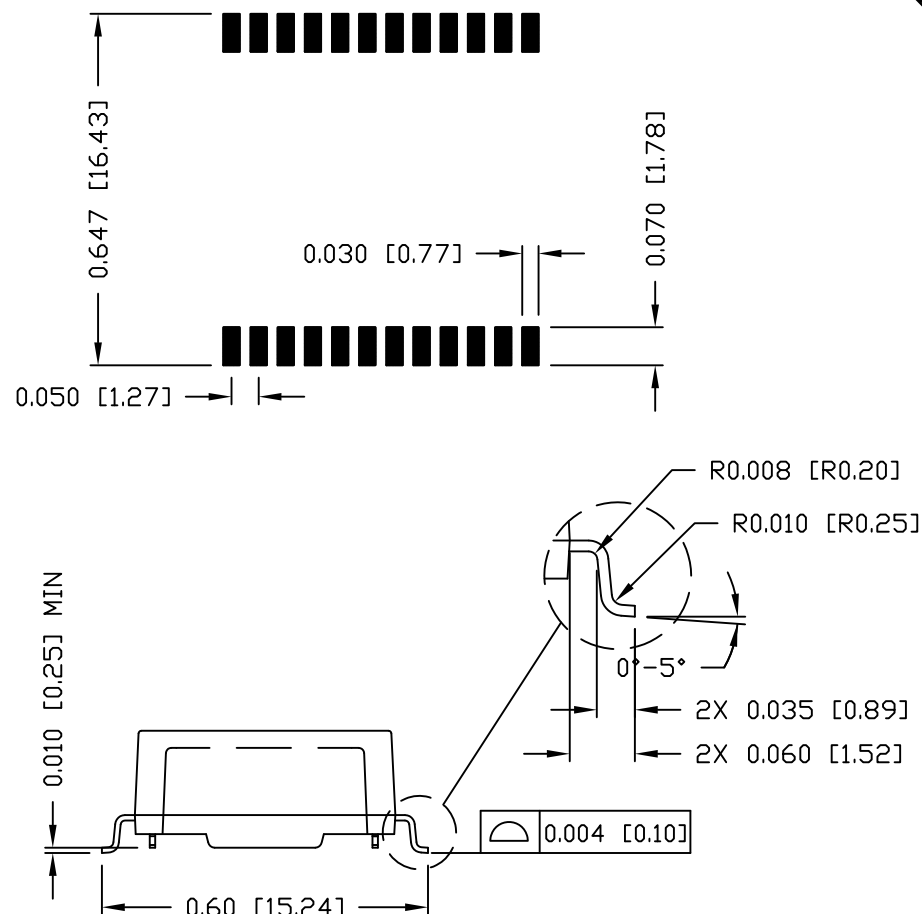
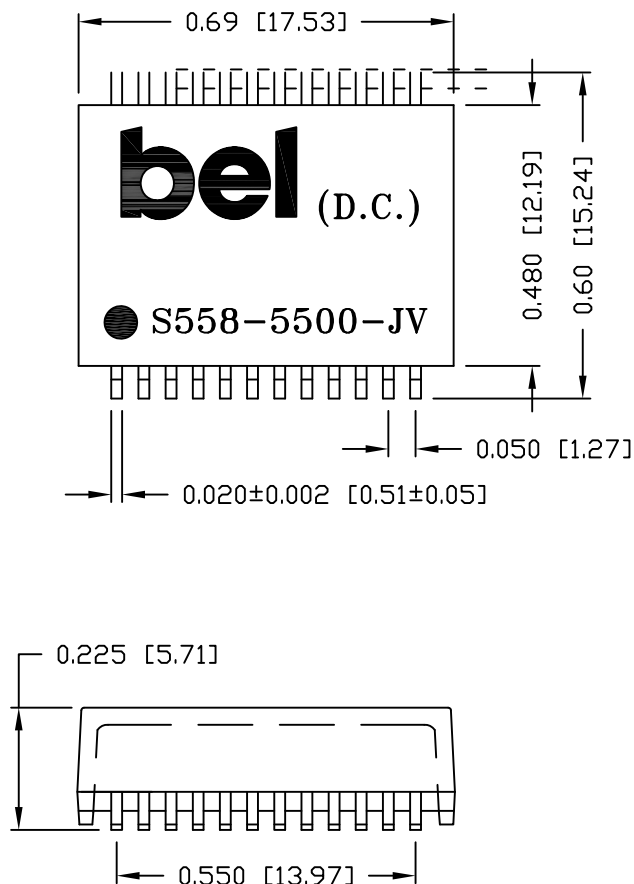
POWER | PROTECT | CONNECT

THE INFORMATION CONTAINED HEREIN IS CONSIDERED "PROPRIETARY" TO BEL FUSE INC. AND SHALL NOT BE COPIED, REPRODUCED OR DISCLOSED WITHOUT THE WRITTEN APPROVAL OF BEL FUSE INC.

PRELIMINARY

SUGGESTED PCB PAD LAYOUT

RoHS



NOTES:

1. STANDARD MARKING REFER TO DOC. HAND-WORK-04.
2. PACKAGE CODE: "RQS001".

ORIGINATED BY	DATE	TITLE	PART NO. / DRAWING NO.	STANDARD DIM.	[] METRIC DIM. AS REF.	REV. : PA	PAGE : 3
Lawrence Tsang	2016-10-28	MECHANICAL OUTLINE	S558-5500-JV	TOL. IN INCH	UNIT : INCH [mm]	 POWER PROTECT CONNECT	
DRAWN BY	DATE		FILE NAME	.X	SCALE : N/A		
ZC Guo	2016-10-28		S5585500JVPA.DWG	.XX ±0.01	SIZE : A4		
				.XXX ±0.005			

DC002(2)120214

This document is electronically generated. This is a controlled copy if used internally

Mouser Electronics

Authorized Distributor

Click to View Pricing, Inventory, Delivery & Lifecycle Information:

Bel:

[S558-5500-12-F](#) [S553-1445-00-F](#)