

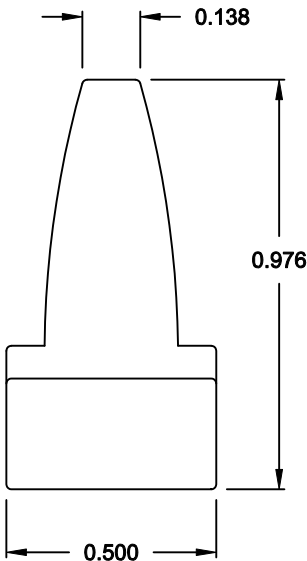
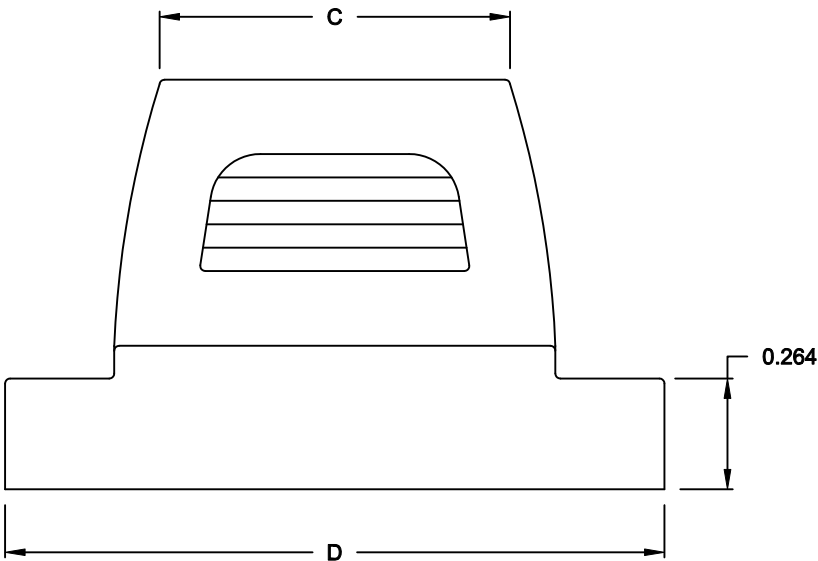
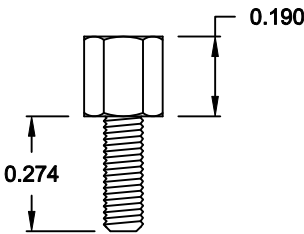
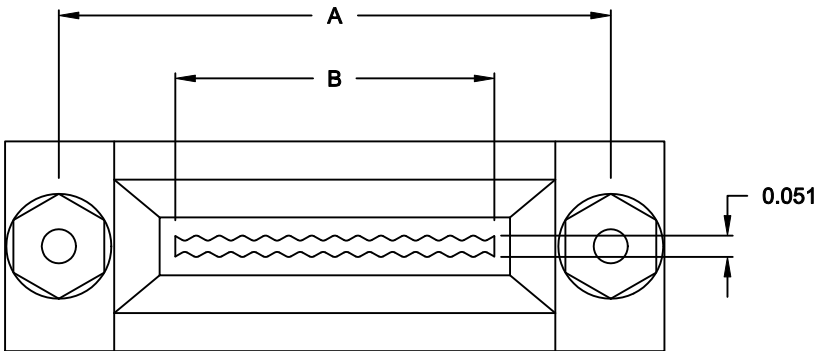
DESCRIPTION: FLAT CABLE BACK SHELL

No. OF CKTS.	DIMENSIONS (IN.)			
	A	B	C	D
09	0.984	0.492	0.531	1.276
15	1.315	0.780	0.835	1.571
25	1.850	1.307	1.386	2.102

MATERIAL: ABS PLATIC, BLACK

KIT INCLUDES:

- (1) BACKSHELL (SLIP-ON)
- (2) 4-40 FEMALE SCREWLOCKS





958-YYY-010R011

SERIES _____
POSITIONS _____
009 _____
015 _____
025 _____
MATERIAL _____
010 = PLASTIC _____
RoHS COMPLIANT _____
R = HIGH TEMP. PROCESS _____
COLOR _____
01 = BLACK _____
PUT-UP _____
1 = KIT _____

FOR CLARITY
HIDDEN LINES
NOT SHOWN

DO NOT SCALE FROM DRAWING

RoHS COMPLIANT

	THESE DRAWINGS AND SPECIFICATIONS ARE THE PROPERTY OF NorComp AND SHALL NOT BE REPRODUCED, COPIED OR USED AS THE BASIS FOR THE MANUFACTURE OF SALE OF APPARATUS WITHOUT WRITTEN PERMISSION.	DRAWN: C. SMITH		DATE: 02-19-08		
		CHECKED:		DATE:		
		SCALE: 2 : 1		SHEET 1 OF 1		REV 0
		DWG NO. 958-YYY-010R011				

Mouser Electronics

Authorized Distributor

Click to View Pricing, Inventory, Delivery & Lifecycle Information:

NorComp:

958-025-010R011