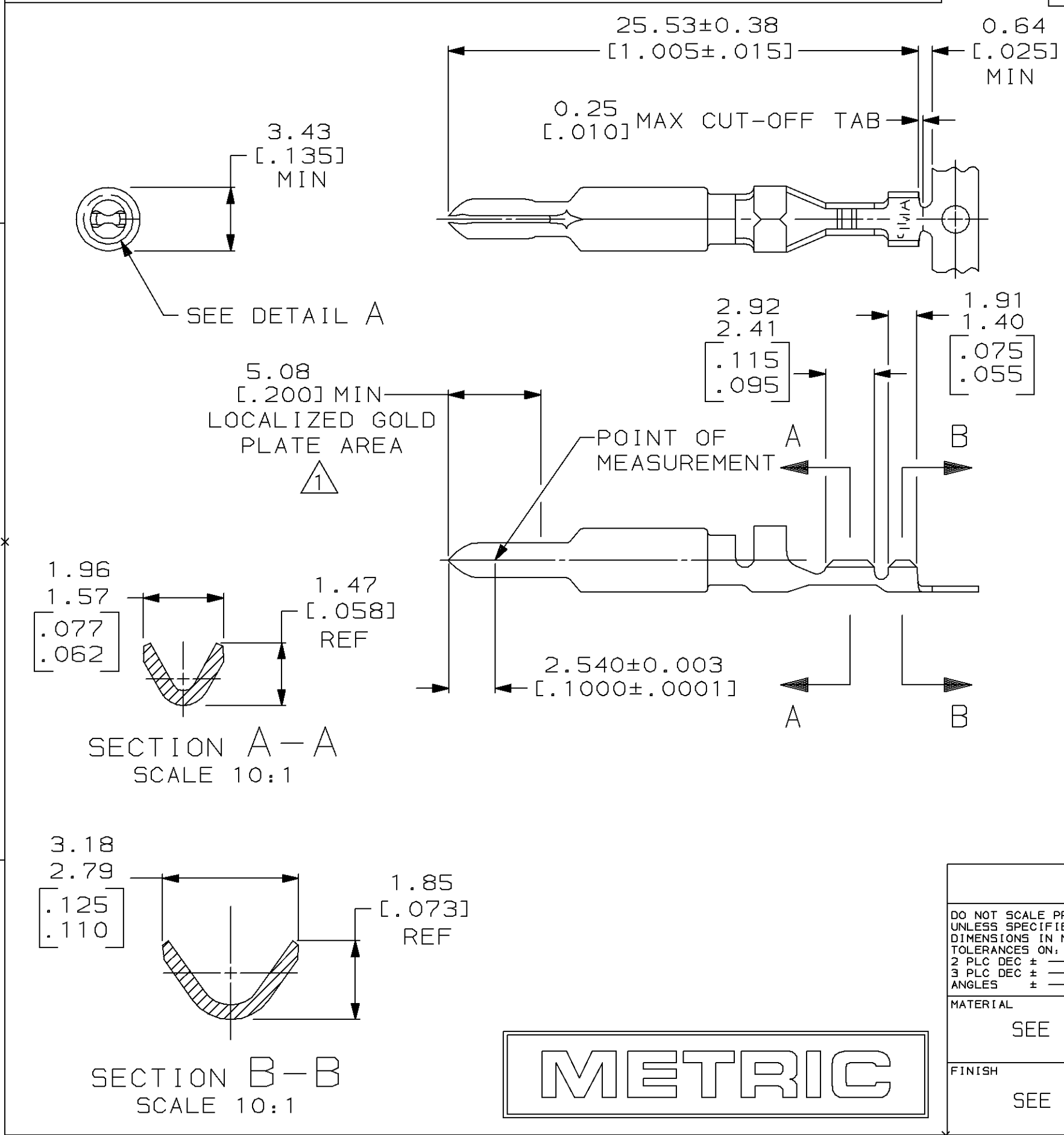


THIS DRAWING IS UNPUBLISHED. RELEASED FOR PUBLICATION ,19 .
© COPYRIGHT 19 BY AMP INCORPORATED. ALL INTERNATIONAL RIGHTS RESERVED.

LOC CM	DIST 53	P	F	REVISIONS					
				ZONE	LTR	DESCRIPTION	DATE	APPD	
4					A2	CORRECTED DWG TITLE	12-2-92	K5 RS	



- 0.00076[.000030] MIN GOLD AT POINT OF MEASUREMENT IN THE LOCALIZED GOLD PLATE AREA, AND ON INSIDE OF WIRE BARREL, OVER 0.00127[.000050] NICKEL ON ENTIRE CONTACT.
- WIRE RANGE: 0.05-0.15mm² [30-26] AWG. INSULATION RANGE: 0.81-1.45 [.032-.057].
- DIMENSIONS IN BRACKETS ARE IN INCHES.

METRIC

GOLD Δ		0.30 [.012] PH BRZ	770011-6
FINISH		MATERIAL	PART NO
DO NOT SCALE PRINT. UNLESS SPECIFIED DIMENSIONS IN MM [INCHES] TOLERANCES ON: 2 PLC DEC \pm _____ 3 PLC DEC \pm _____ ANGLES \pm _____ MATERIAL SEE TABLE FINISH SEE TABLE		DR 2-24-89 K. WHITAKER	AMP AMP INCORPORATED Harrisburg, Pa. 17105
		CHK 2-24-89 R. SWING	
		APPD 2-24-89 D. KLEIN	
		APPD 2-24-89 D. KLEIN PRODUCT SPEC	
		NAME	PIN, UNIVERSAL MATE-N-LOK™ II
		SIZE	B
		FSCM NO	00779
		DRAWING NO	770011
		SCALE	4:1
		SHEET	1 OF 1

Mouser Electronics

Authorized Distributor

Click to View Pricing, Inventory, Delivery & Lifecycle Information:

[TE Connectivity:](#)

[770011-6](#)