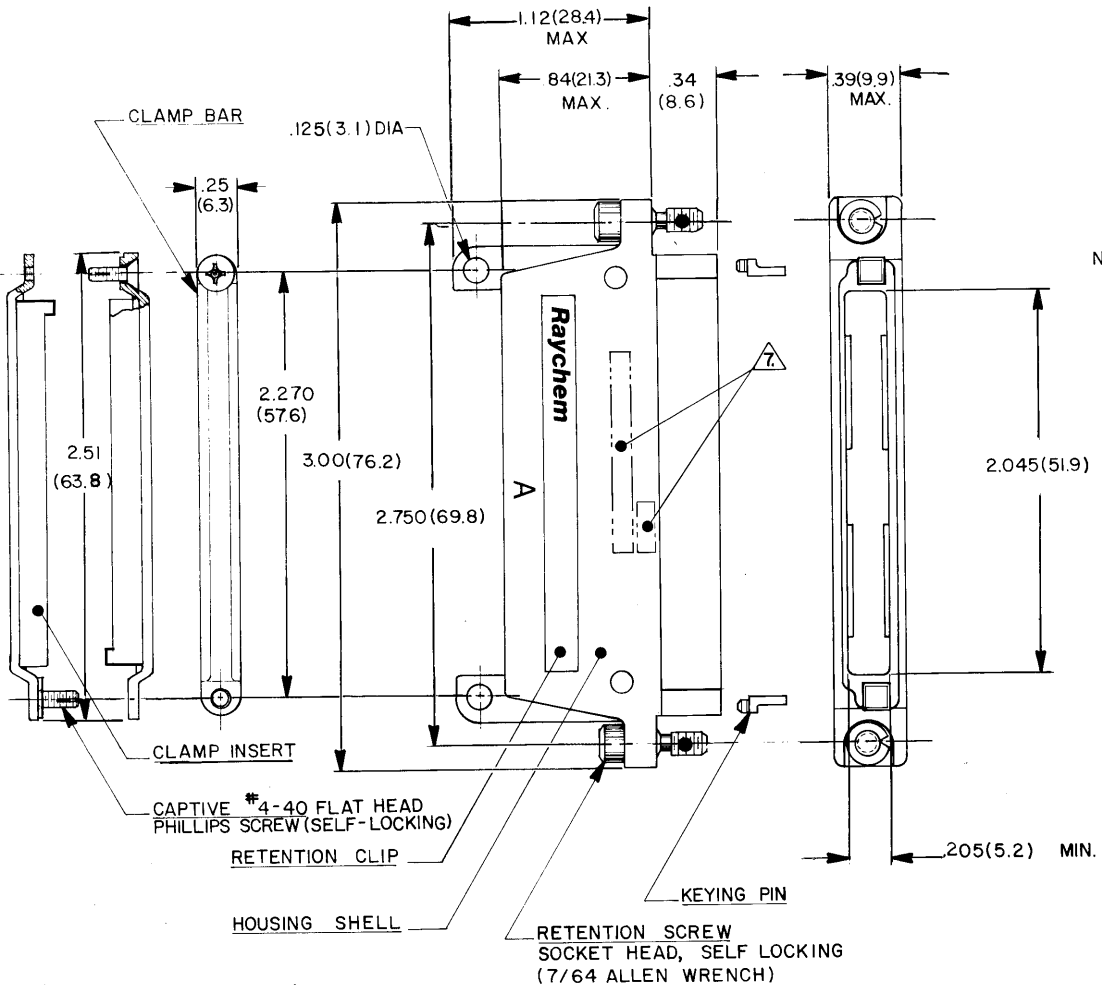


DATE	REV	BY	APP	DATE	APPROVED
	A	CHANGE PER DCO 00817		10-11	Hub
	B	REV PER ECO 12-020967	CT	12-12	KH



NOTES:

- MATERIAL:
 - 1-A. HOUSING SHELL; ALUMINUM ALLOY PER QQ-A-591.
 - 1-B. RETENTION SCREW; STAINLESS STEEL PER QQ-S-763 300 SERIES.
 - 1-C. RETENTION CLIP; COPPER ALLOY I72 PER QQ-C-533.
 - 1-D. KEYING PIN; POLYARYLENE THERMOPLASTIC, MOLDED
 - 1-E. CLAMP BAR; STAINLESS STEEL PER QQ-S-763 300 SERIES.
 - 1-F. CLAMP INSERT; SILICONE ELASTOMER PER ZZ-R-765.
 - 1-G. CAPTIVE SCREW; STAINLESS STEEL PER QQ-S-763 300 SERIES.
 - FINISH:
 - 2-A. HOUSING SHELL; NICKEL PLATED PER MIL-C-26074, CLASS 3, GRADE B.
 - 2-B. RETENTION SCREW; PASSIVATED PER QQ-P-35.
 - 2-C. RETENTION CLIP; NICKEL PLATED PER MIL-C-26074, CLASS 2, GRADE B.
 - 2-D. CLAMP BAR; PASSIVATED PER QQ-P-35.
 - 2-E. CAPTIVE SCREW; PASSIVATED PER QQ-P-35.
 - HOUSING MEETS THE REQUIREMENTS OF **Raychem** SPECIFICATION D-6014.
 - FOR MOUNTING/MATING AND KEYING INFORMATION, SEE **Raychem** DRAWING D652-0012.
 - (2) KEYING PINS ARE SUPPLIED NOT INSTALLED WITH EACH PLUG.
 - DUST COVER SUPPLIED INSTALLED WITH EACH PLUG.
- Raychem** PART NO. MTC100-YH2-009 AND DATE CODE IS STAMPED APPROXIMATELY AS SHOWN. © Raychem Corporation 1979

WEIGHT (MAX)	LBS.	GRAMS
	.0728	33.01

9 CONFIGURATION CONTRON PER ES 71001 APPLIES.

CONNECTOR SPECIFICATION CONTROL DRAWING

UNLESS OTHERWISE SPECIFIED DIMENSIONS ARE IN INCHES BRACKETED DIMENSIONS () ARE METRIC AND TOLERANCES ARE: .XXX : ± .005 (0.1MM) .XX : ± .02 (0.5MM) X : ±	DRAWN	SA LOPEZ	8/2/79	Raychem	RAYCHEM CORPORATION 300 CONSTITUTION DRIVE MENLO PARK, CALIFORNIA 94025		
	CHECKED		8-2-79		TITLE	PLUG HOUSING 2 INCH WITH CABLE CLAMP	
	APPROVED		8-2-79		MTC100 SERIES - CONDUCTIVE FINISH		
	APPROVED		8-2-79	SIZE	CODE IDENT	DWG. NO.	
	APPROVED		8-2-79	C	NO. 06090	MTC100-YH2-009	
	PROJECT	6448-H008		WEIGHT		SHEET 1 OF 1	

If this document is printed it becomes uncontrolled. Check with the web for latest revision.

DO NOT SCALE THIS DRAWING

CONFIGURATION CONTROL

Mouser Electronics

Authorized Distributor

Click to View Pricing, Inventory, Delivery & Lifecycle Information:

[TE Connectivity:](#)

[MTC100-YH2-009](#)