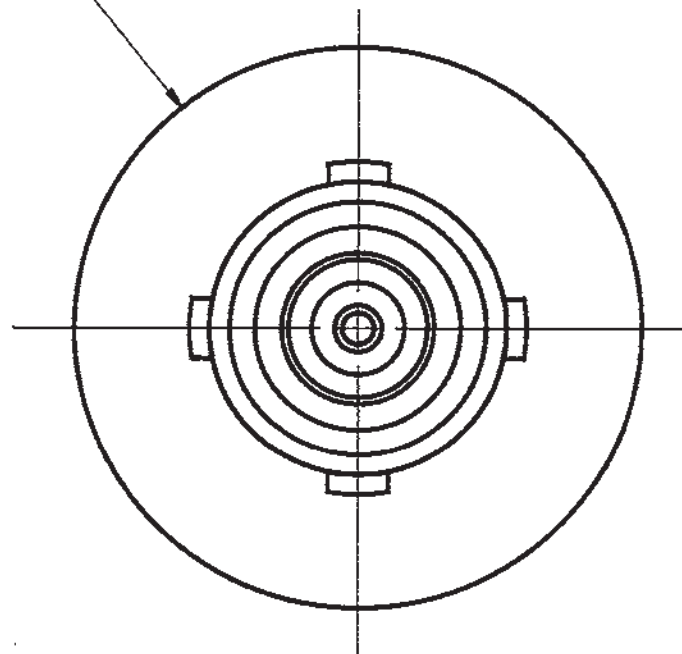


RECOMMENDED  
PANEL CUTOUT  
SCALE: 2/1

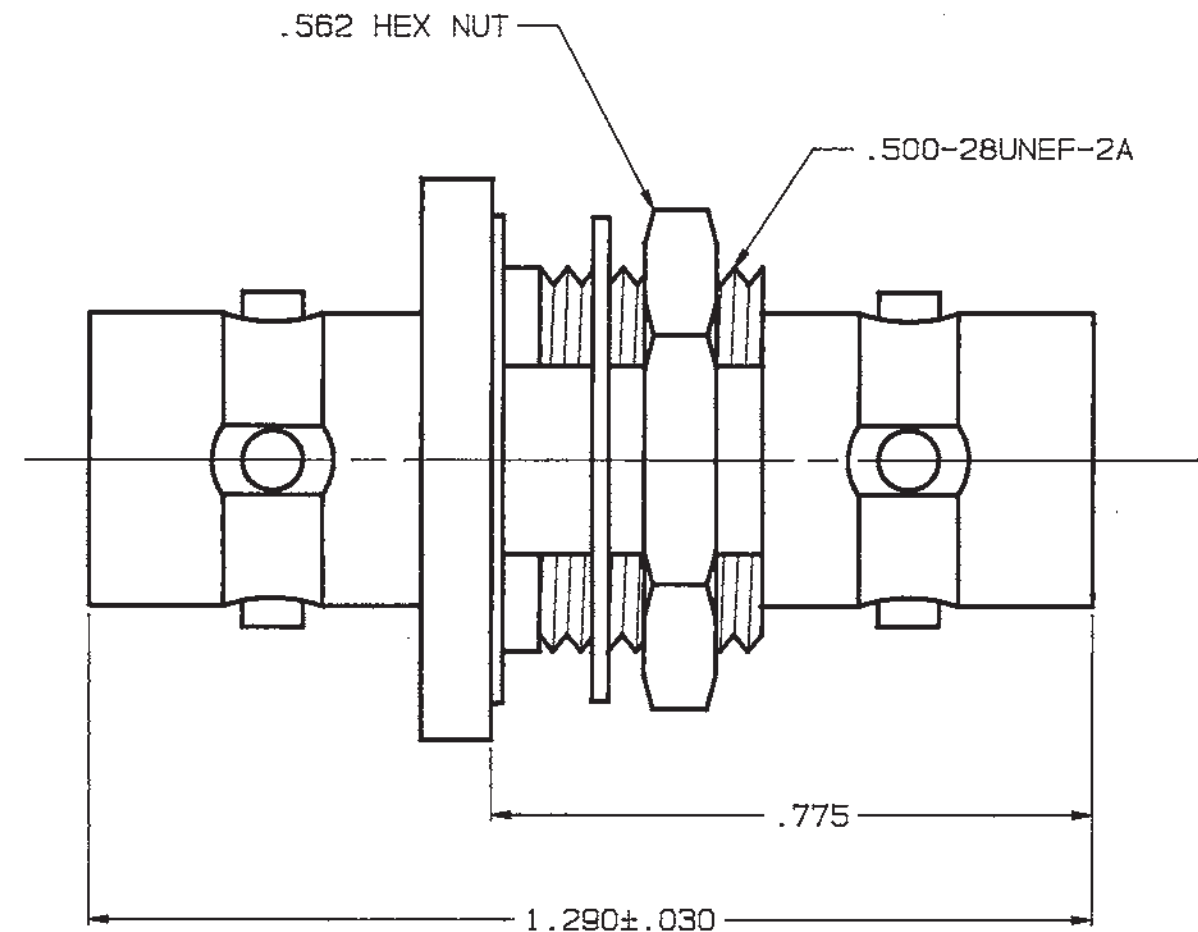
.730  
DIA




INCH	MM
.005	0.13
.030	0.76
.187	4.75
.218	5.54
.221	5.61
.505	12.83
.510	12.95
.562	14.27
.730	18.54
.775	19.69
1.290	32.77

DISK #	DWG SIZE	DATA CONTAINED IN THIS DOCUMENT IS PROPRIETARY TO TROMPETER ELECTRONICS INC. AND SHALL NOT BE DISCLOSED. COPIED OR USED FOR PROCUREMENT OR MANUFACTURE WITHOUT EXPRESS WRITTEN PERMISSION.
H 4	B	

REVISIONS			3-0236		SH 1
REV	EO	DESCRIPTION	DWN	APPROVED	DATE
C	9011	DIM .775 RELOCATED ARROW DIMENSION LINE & REDRAWN	J S	E.E. K9.5	9-18-90



4. CONCENTRIC TWINAX/TRIAX 4-LUG  
TRB BULKHEAD MOUNT FEEDTHRU RECEPTACLE
3. MAX PANEL THK .187
2. FINISH: TFS-1A (NICKEL)
1. ALL DIM ARE IN INCHES

QTY	DESCRIPTION			PART NUMBER		ITEM
TOL UNLESS SPECIFIED			 <b>TROMPETER</b> RF connectivity <small>a cinch connectivity solutions brand</small>	BJ78FL		
.XX ±						
.XXX ± .005						
.XXXX±						
ANGLES±						
DWN	J S	9/18/90	MATERIAL	CODE IDENT	DRAWING NO.	REV
CHK	E.E.	9-18-90	—	14949	3-0236	C
ENGR	K9.	9-18-90				
APPR	OK	9-19-90	SCALE 4/1	DATE 7-19-85	SHEET 1 OF 2	

NEXT ASSY

# Mouser Electronics

Authorized Distributor

Click to View Pricing, Inventory, Delivery & Lifecycle Information:

[Cinch Connectivity Solutions:](#)

[BJ78FL](#)