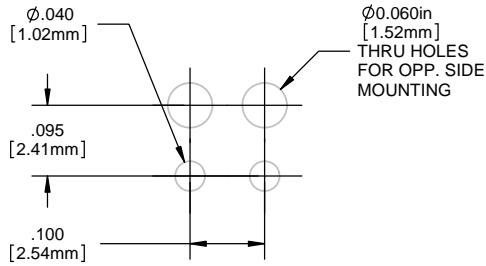


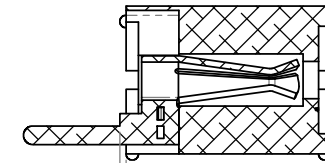
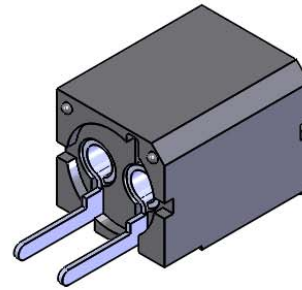
NOTES:

1. ROHS COMPLIANT
2. MATERIAL: HOUSING - NYLON 6/6, U.L.94-V0 RATING, BLACK (UNLESS OTHERWISE SPECIFIED)
CONTACTS - PHOSPHOR BRONZE, TIN PLATED
3. MOUNTING: SPACING ON .250" [6.35mm] CENTERS. OPTIONAL .060" [1.52mm] HOLES FOR OPPOSITE SIDE MOUNTING. SAME SIDE MOUNTING, DELETE THE .060" [1.52mm] HOLES (SEE PATTERN)
4. OPTO: STANDARD VISIBLE, IR LED, OR PHOTO DETECTOR WITH LEADS ON .100" [2.54mm] CENTERS
5. LED LEAD DIMENSIONS: MINIMUM .017" [.43mm] ROUND OR SQUARE SHAPE. MAXIMUM .030" [.76mm] THICKNESS - .040" [1.02mm] WIDTH
6. U.S. & FOREIGN PATENTS ISSUED

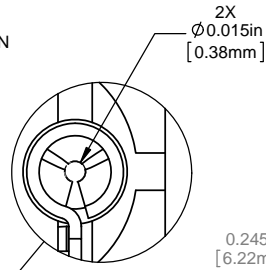
REVISIONS					
ECN #	REV.	DESCRIPTION	DATE	INITIALS	CHK'D
	001	REVISED PER ECR 111009AZ01	6/20/10	SMU	DZ
426	002	REVISED PER ECR 041212KH02	4/13/12	KH	ED



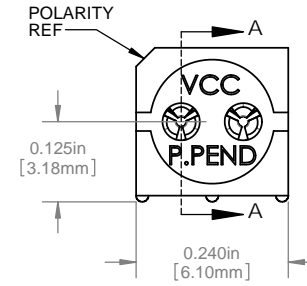
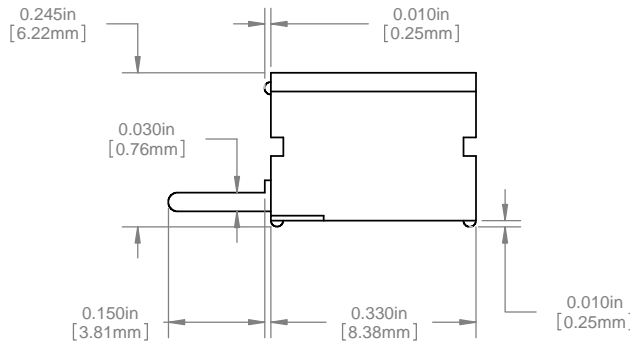
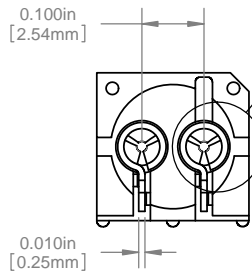
PCB HOLE PATTERN



SECTION A-A



DETAIL B
SCALE 10 : 1



ORDERING CODE : PCV 220

DIMENSION STYLE: INCHES / MM GENERAL TOLERANCES UNLESS OTHERWISE SPECIFIED		APPROVAL		DATE	
INCHES	MM	DRAWN	SMU	6/20/10	
X	± .020	± .508	CHECKED	DZ	6/20/10
XX	± .010	± .254			
XXX	± .005	± .127			
ANGLE ± 1°					
BREAK ALL CORNERS AND SHARP EDGES 90° MAX					
THIRD ANGLE PROJECTION		MATERIAL			
PROPRIETARY AND CONFIDENTIAL		SEE NOTES			
THE INFORMATION CONTAINED IN THIS DRAWING IS THE SOLE PROPERTY OF VISUAL COMMUNICATIONS COMPANY, INC. ANY REPRODUCTION IN PART OR AS A WHOLE WITHOUT THE WRITTEN PERMISSION OF VISUAL COMMUNICATIONS COMPANY, INC IS PROHIBITED.		FINISH			
		SEE NOTES			
DO NOT SCALE DRAWING					

MATERIAL		SEE NOTES	
FINISH		SEE NOTES	
DO NOT SCALE DRAWING			

VCC

12780 DANIELSON CT, SUITE A, POWAY, CA 92064 U.S.A
PHONE: (800) 522-5546 EMAIL: vccsales@vcc-lite.com

TITLE:
P-C-LITE® VERTICAL MOUNT

SIZE	DWG. NO.	REV
B	PCV 220	002

SCALE: 5:1 SHEET 1 OF 1

Mouser Electronics

Authorized Distributor

Click to View Pricing, Inventory, Delivery & Lifecycle Information:

[VCC:](#)

[PCV220](#) [PCV22001](#) [PCV22002](#) [PCV22011](#) [PCV22003](#) [PCV22012](#) [PCV22010](#)