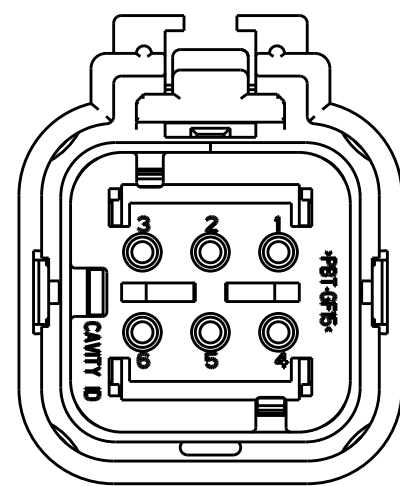
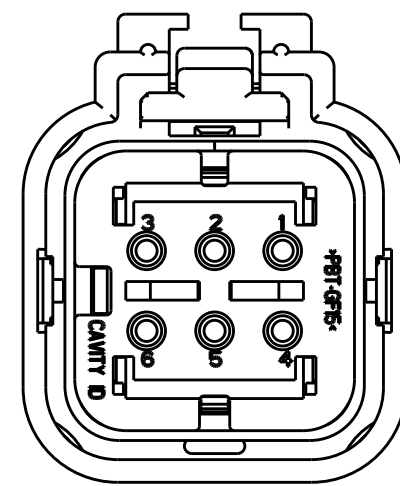


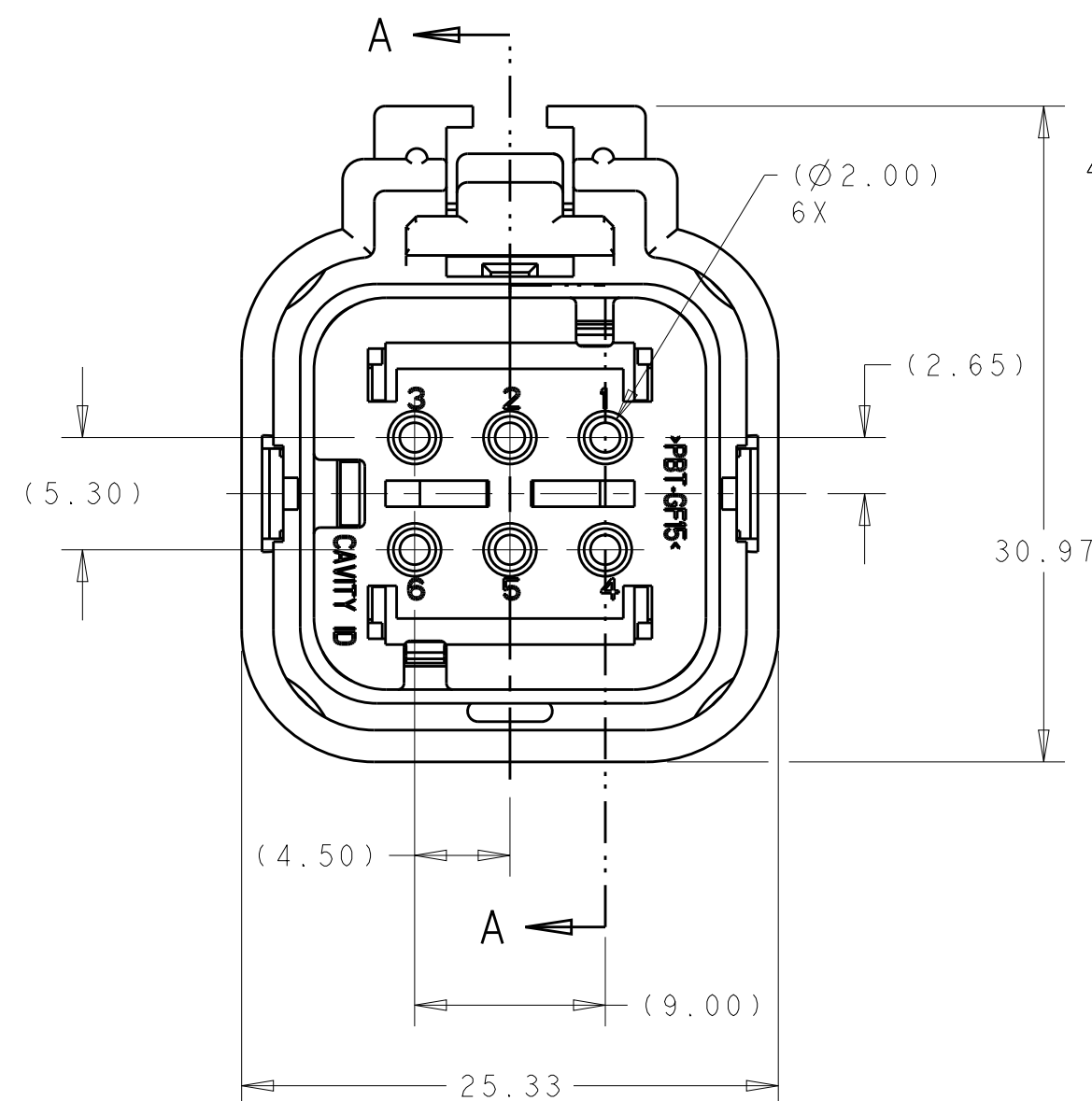
REVISIONS					
P	LTR	DESCRIPTION	DATE	DWN	APVD
	A	RELEASED PER ECO-10-009942	28MAY2010	DD	RB
	B	REVISED PER ECO-13-019865	27DEC2013	DR	RB



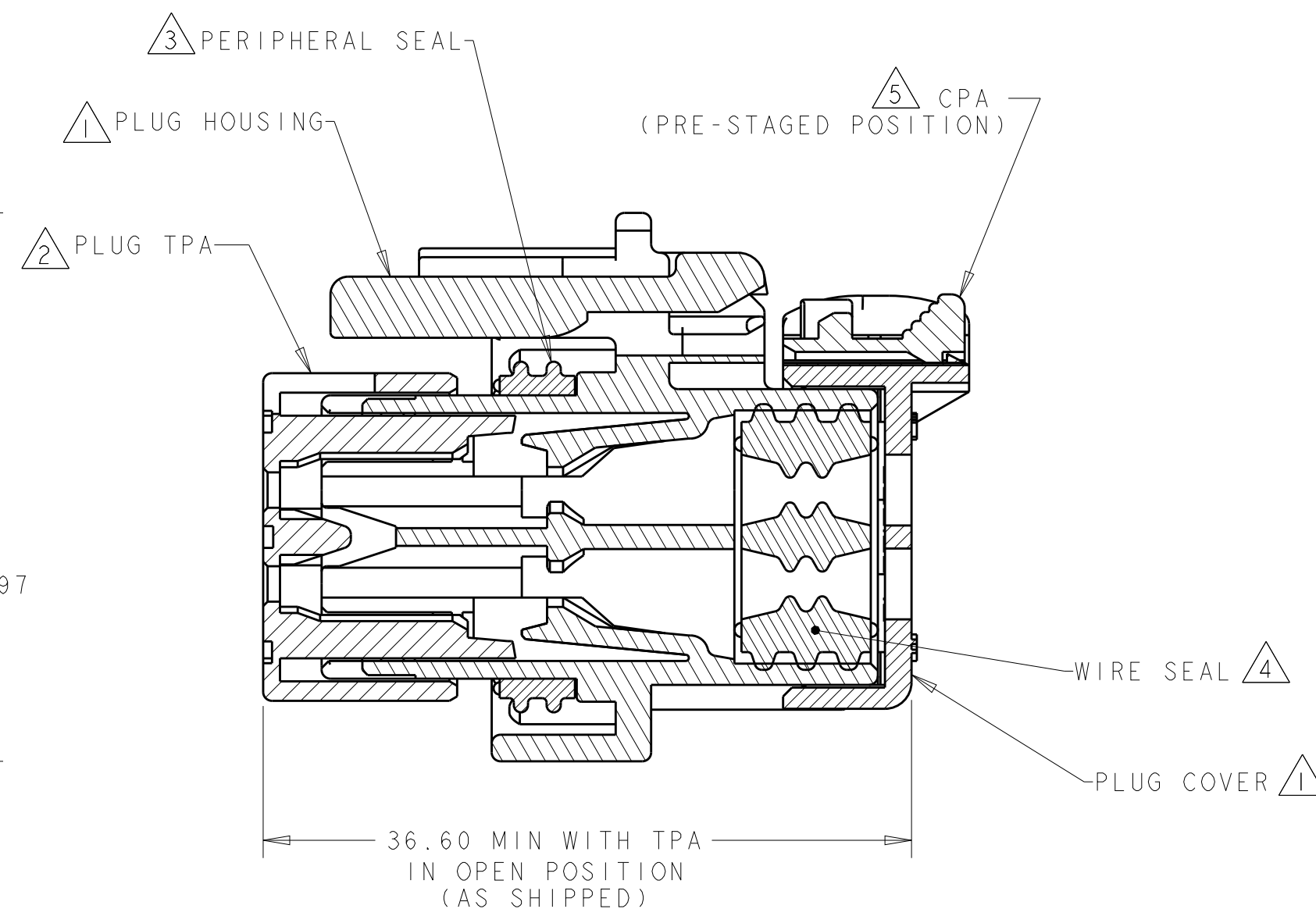
2098237-2  
PURPLE TPA  
KEY B  
SCALE: 2:1



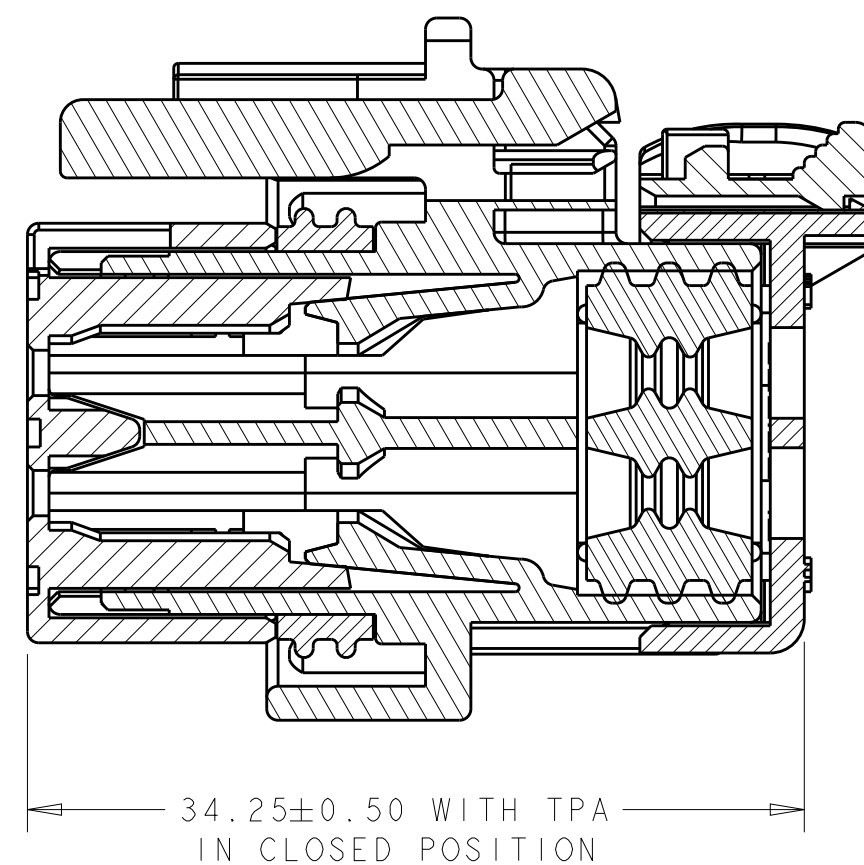
2098237-3  
BLUE TPA  
KEY C  
SCALE: 2:1



2098237-1 SHOWN  
ORANGE TPA  
KEY A

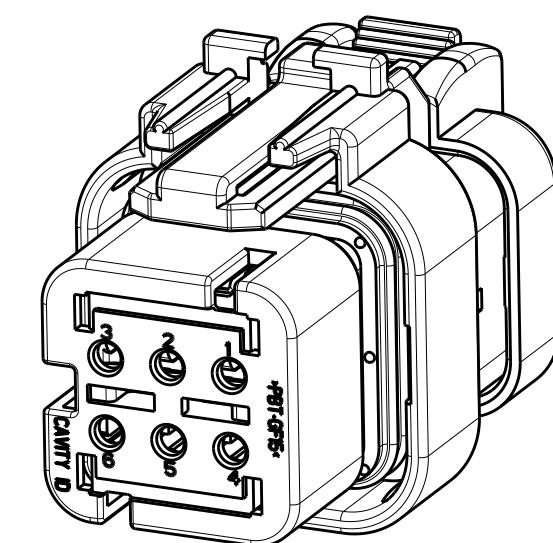


SECTION A - A

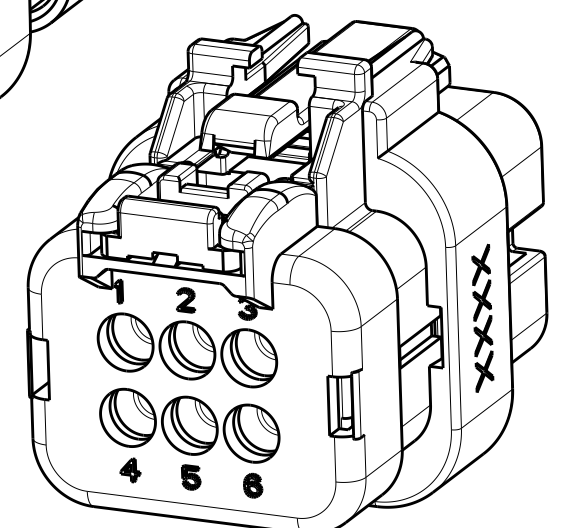


SECTION A - A

- 1 HOUSING AND COVER MATERIAL: 25% GLASS FILLED THERMOPLASTIC  
COLOR: NATURAL (BROWN)
  - 2 TPA MATERIAL: 15% GLASS FILLED THERMOPLASTIC  
COLOR: (SEE TABLE)
  - 3 PERIPHERAL SEAL MATERIAL: SILICONE  
COLOR: BLUE
  - 4 WIRE SEAL MATERIAL: SILICONE  
COLOR: MARINE BLUE
  - 5 CPA MATERIAL: 20% GLASS FILLED THERMOPLASTIC  
COLOR: ORANGE
6. RECOMMENDED WIRE DIAMETER RANGE IS 2.18 TO 3.67mm





SCALE 2:1



SCALE 2:1

C	BLUE	2098237-3
B	PURPLE	2098237-2
A	ORANGE	2098237-1
KEY	TPA COLOR	PART NUMBER

THIS DRAWING IS A CONTROLLED DOCUMENT.		DWN 29MAY2009 RUSTY WORTHINGTON CHK 29MAY2009 ROGER BALTER APVD 29MAY2009 ROGER BALTER		 TE Connectivity	
DIMENSIONS: mm		TOLERANCES UNLESS OTHERWISE SPECIFIED:		NAME PLUG ASSEMBLY, 6 POSITION, DUAL ROW, AMPSEAL 16, VO MATERIAL	
		0 PLC ±. 1 PLC ±0.5 2 PLC ±0.30 3 PLC ±. 4 PLC ±. ANGLES ±. FINISH		PRODUCT SPEC 108-2184 APPLICATION SPEC 114-13065	
MATERIAL SEE NOTES - -		WEIGHT 14±1g		SIZE A200779	
		CUSTOMER DRAWING		DRAWING NO C-2098237	
				RESTRICTED TO -	
				SCALE 3:1 SHEET OF REV B	

# Mouser Electronics

Authorized Distributor

Click to View Pricing, Inventory, Delivery & Lifecycle Information:

[TE Connectivity:](#)

[2098237-2](#)