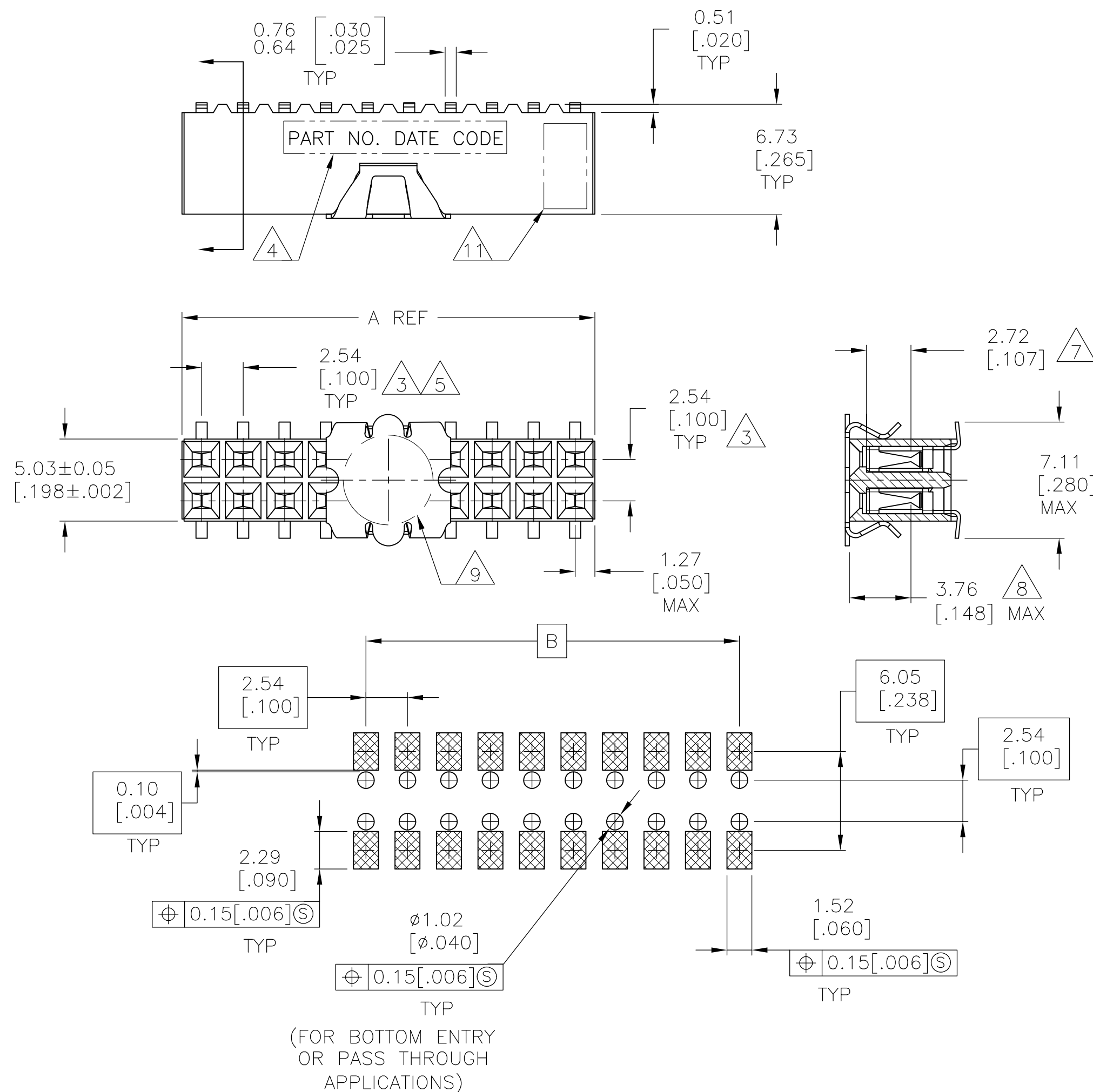

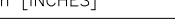



| | | | | | | | |
|-----|------|-----------|-----|---------------------------|---------|-----|------|
| LOC | DIST | REVISIONS | | | | | |
| AD | 00 | P | LTR | DESCRIPTION | DATE | DWN | APVD |
| | | | J9 | REVISED PER ECO-13-005565 | 01APR13 | KH | JO |



RECOMMENDED PC BOARD LAYOUT

| FOR PART NUMBERS 5-147105-1 THRU 9-147105-0 SEE SHEET 2 | | | | | | |
|--|--------------|----------------------|---------------|--------------|----------------|----------------|
| <div>2</div> | 120mm | 99.06[3.900] | 101.60[4.000] | 80 | 4-147105-0 | |
| | | 96.52[3.800] | 99.06[3.900] | 78 | 3-147105-9 | |
| | | 93.98[3.700] | 96.52[3.800] | 76 | 3-147105-8 | |
| | | 91.44[3.600] | 93.98[3.700] | 74 | 3-147105-7 | |
| | | 88.90[3.500] | 91.44[3.600] | 72 | 3-147105-6 | |
| | | 86.36[3.400] | 88.90[3.500] | 70 | 3-147105-5 | |
| | | 83.82[3.300] | 86.36[3.400] | 68 | 3-147105-4 | |
| | | 81.28[3.200] | 83.82[3.300] | 66 | 3-147105-3 | |
| | | 78.74[3.100] | 81.28[3.200] | 64 | 3-147105-2 | |
| | | 76.20[3.000] | 78.74[3.100] | 62 | 3-147105-1 | |
| | | 73.66[2.900] | 76.20[3.000] | 60 | 3-147105-0 | |
| | | 71.12[2.800] | 73.66[2.900] | 58 | 2-147105-9 | |
| | | 68.58[2.700] | 71.12[2.800] | 56 | 2-147105-8 | |
| | | 88mm | 66.04[2.600] | 68.58[2.700] | 54 | 2-147105-7 |
| | 63.50[2.500] | | 66.04[2.600] | 52 | 2-147105-6 | |
| | 60.96[2.400] | | 63.50[2.500] | 50 | 2-147105-5 | |
| | 58.42[2.300] | | 60.96[2.400] | 48 | 2-147105-4 | |
| | 55.88[2.200] | | 58.42[2.300] | 46 | 2-147105-3 | |
| | 53.34[2.100] | | 55.88[2.200] | 44 | 2-147105-2 | |
| | 72mm | 50.80[2.000] | 53.34[2.100] | 42 | 2-147105-1 | |
| | | 48.26[1.900] | 50.80[2.000] | 40 | 2-147105-0 | |
| | | 45.72[1.800] | 48.26[1.900] | 38 | 1-147105-9 | |
| | | 43.18[1.700] | 45.72[1.800] | 36 | 1-147105-8 | |
| | | 40.64[1.600] | 43.18[1.700] | 34 | 1-147105-7 | |
| | | 38.10[1.500] | 40.64[1.600] | 32 | 1-147105-6 | |
| | | 35.56[1.400] | 38.10[1.500] | 30 | 1-147105-5 | |
| | | 33.02[1.300] | 35.56[1.400] | 28 | 1-147105-4 | |
| | 44mm | 30.48[1.200] | 33.02[1.300] | 26 | 1-147105-3 | |
| | | 27.94[1.100] | 30.48[1.200] | 24 | 1-147105-2 | |
| | | 25.40[1.000] | 27.94[1.100] | 22 | 1-147105-1 | |
| | | 22.86[.900] | 25.40[1.000] | 20 | 1-147105-0 | |
| | | 20.32[.800] | 22.86[.900] | 18 | 147105-9 | |
| | | 17.78[.700] | 20.32[.800] | 16 | 147105-8 | |
| | | 15.24[.600] | 17.78[.700] | 14 | 147105-7 | |
| | | 12.70[.500] | 15.24[.600] | 12 | 147105-6 | |
| | | 10.16[.400] | 12.70[.500] | 10 | 147105-5 | |
| | | 7.62[.300] | 10.16[.400] | 8 | 147105-4 | |
| | | 5.08[.200] | 7.62[.300] | 6 | 147105-3 | |
| | | 2.54[.100] | 5.08[.200] | 4 | 147105-2 | |
| | 24mm | - | 2.54[.100] | 2 | 147105-1 | |
| | FINISH | EIA TAPE WIDTH | B | A | NO.OF POSN. | PART NUMBER |

| | | | | | | | |
|---|--|--|--|--|--|---|--|
| THIS DRAWING IS A CONTROLLED DOCUMENT. | | DWN M.BINNER | | 06NOV02 | |  TE Connectivity | |
| | | CHK J.JOLSON | | 06NOV02 | | | |
| DIMENSIONS: mm [INCHES] | | TOLERANCES UNLESS OTHERWISE SPECIFIED: | | APVD J.JOLSON 06NOV02 | | NAME | |
|  | | 0 PLC ± - 1 PLC ± - 2 PLC ± .005[0.13] 3 PLC ± - 4 PLC ± - ANGLES ± - | | PRODUCT SPEC - APPLICATION SPEC 108-25022 | | RECEPTACLE ASSEMBLY, MOD IV, DOUBLE ROW, DUAL ENTRY, .100X.100CL, SURFACE MOUNT, AMPMODU | |
| MATERIAL | | FINISH | | WEIGHT 114-25018 A2 00779 | | DRAWING NO C-147105 | |
|  | | SEE TABLE | | CUSTOMER DRAWING | | SCALE 4:1 SHEET 1 of 2 REV 1.0 | |
| | | | | | | | |

| LOC | DIST | REVISIONS | | | | | |
|-----|------|-----------|-----|-------------|------|-----|------|
| | | P | LTR | DESCRIPTION | DATE | DWN | APVD |
| AD | 00 | | — | SEE SHEET 1 | — | — | — |

- 1

HOUSING: FLAME RETARDANT, GLASS FILLED, POLYESTER, COLOR: BLACK.
CONTACT: PHOSPHOR BRONZE
VACUUM COVER: STAINLESS STEEL
- 2

CONTACT: DUPLEX PLATED 0.76µm[.000030] GOLD IN CONTACT AREA, 3.81-7.62µm[.000150-.000300] BRIGHT TIN-LEAD ON, LEADS, ALL OVER 1.27µm[.000050] MINIMUM NICKEL
- 3

THESE DIMENSIONS PERTAIN TO CAVITIY CENTERLINES ONLY NOT TO CONTACT LOACATIONS
- 4

MARK PART NUMBER AND DATE CODE, IN APPROXIMATE LOCATION SHOWN, EITHER SIDE.
- 5

TOLERANCE IS NON-CUMULATIVE.
- 6

2 POSITION DATE CODE IS MARKED OPPOSITE SIDE OF TE CONNECTIVITY LOGO.
- 7

POINT OF MEASUREMENT DIMENSION FOR PLATING THICKNESS (INSIDE CONTACT BEAM).
- 8

POINT-OF-CONTACT DIMENSION.
- 9

ø5.51[.217] MIN TARGET AREA FOR VACUUM PICK UP. COVER TO BE REMOVED AFTER SOLDERING.
- 10

PACKAGED IN TAPE & REEL PER EIA 481 SPECIFICATION.
- 11

TE CONNECTIVITY TRADEMARK AND CSA LOGO ARE MOLDED INTO HOUSING.
- 12

NO PART NUMBER REQUIRED ON THIS PART.
- 13

CONTACT: DUPLEX PLATE CONNECTIVITYD 0.76µm[.000030] GOLD IN CONTACT AREA, 3.81-7.62µm[.000150-.000300] MATTE TIN ON LEADS, ALL OVER 1.27µm[.000050] MINIMUM NICKEL.
- 14

ROHS 2002/95/EC COMPLIANT.
- 15


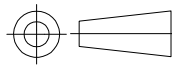
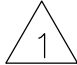
SUPERRSEDED BY 6-147105-5
- 16

SUPERRSEDED BY 6-147105-8
- 17

SUPERRSEDED BY 7-147105-2
- 18

SUPERRSEDED BY 8-147105-0

| | | | | |
|-------|--------------|---------------|----|------------|
| 120mm | 99.06[3.900] | 101.60[4.000] | 80 | 9-147105-0 |
| | 96.52[3.800] | 99.06[3.900] | 78 | 8-147105-9 |
| | 93.98[3.700] | 96.52[3.800] | 76 | 8-147105-8 |
| | 91.44[3.600] | 93.98[3.700] | 74 | 8-147105-7 |
| | 88.90[3.500] | 91.44[3.600] | 72 | 8-147105-6 |
| | 86.36[3.400] | 88.90[3.500] | 70 | 8-147105-5 |
| | 83.82[3.300] | 86.36[3.400] | 68 | 8-147105-4 |
| | 81.28[3.200] | 83.82[3.300] | 66 | 8-147105-3 |
| | 78.74[3.100] | 81.28[3.200] | 64 | 8-147105-2 |
| | 76.20[3.000] | 78.74[3.100] | 62 | 8-147105-1 |
| | 73.66[2.900] | 76.20[3.000] | 60 | 8-147105-0 |
| | 71.12[2.800] | 73.66[2.900] | 58 | 7-147105-9 |
| 88mm | 68.58[2.700] | 71.12[2.800] | 56 | 7-147105-8 |
| | 66.04[2.600] | 68.58[2.700] | 54 | 7-147105-7 |
| | 63.50[2.500] | 66.04[2.600] | 52 | 7-147105-6 |
| | 60.96[2.400] | 63.50[2.500] | 50 | 7-147105-5 |
| | 58.42[2.300] | 60.96[2.400] | 48 | 7-147105-4 |
| 72mm | 55.88[2.200] | 58.42[2.300] | 46 | 7-147105-3 |
| | 53.34[2.100] | 55.88[2.200] | 44 | 7-147105-2 |
| | 50.80[2.000] | 53.34[2.100] | 42 | 7-147105-1 |
| | 48.26[1.900] | 50.80[2.000] | 40 | 7-147105-0 |
| | 45.72[1.800] | 48.26[1.900] | 38 | 6-147105-9 |
| | 43.18[1.700] | 45.72[1.800] | 36 | 6-147105-8 |
| | 40.64[1.600] | 43.18[1.700] | 34 | 6-147105-7 |
| | 38.10[1.500] | 40.64[1.600] | 32 | 6-147105-6 |
| | 35.56[1.400] | 38.10[1.500] | 30 | 6-147105-5 |
| | 33.02[1.300] | 35.56[1.400] | 28 | 6-147105-4 |
| 44mm | 30.48[1.200] | 33.02[1.300] | 26 | 6-147105-3 |
| | 27.94[1.100] | 30.48[1.200] | 24 | 6-147105-2 |
| | 25.40[1.000] | 27.94[1.100] | 22 | 6-147105-1 |
| | 22.86[.900] | 25.40[1.000] | 20 | 6-147105-0 |
| | 20.32[.800] | 22.86[.900] | 18 | 5-147105-9 |
| | 17.78[.700] | 20.32[.800] | 16 | 5-147105-8 |
| | 15.24[.600] | 17.78[.700] | 14 | 5-147105-7 |
| | 12.70[.500] | 15.24[.600] | 12 | 5-147105-6 |
| | 10.16[.400] | 12.70[.500] | 10 | 5-147105-5 |
| | 7.62[.300] | 10.16[.400] | 8 | 5-147105-4 |
| | 5.08[.200] | 7.62[.300] | 6 | 5-147105-3 |
| | 2.54[.100] | 5.08[.200] | 4 | 5-147105-2 |
| 24mm | - | 2.54[.100] | 2 | 5-147105-1 |

| | | | | | | | | | | | |
|---|--|--|--|--|--|--|--|---|--|-----------------------------------|--|
| FINISH | | EIA TAPE WIDTH | | B | | A | | NO.OF POSN. | | PART NUMBER | |
| THIS DRAWING IS A CONTROLLED DOCUMENT. | | | | | | DWN M.BINNER 06NOV02 | |  TE Connectivity | | | |
| DIMENSIONS: mm [INCHES] | | TOLERANCES UNLESS OTHERWISE SPECIFIED: 0 PLC ± - 1 PLC ± - 2 PLC ± .005[0.13] 3 PLC ± - 4 PLC ± - ANGLES ± - | | CHK J.OLSON 06NOV02 | | NAME RECEPTACLE ASSEMBLY, MOD IV, DOUBLE ROW, DUAL ENTRY, .100X.100CL, SURFACE MOUNT, AMPMODU | | | | | |
| | | | | APVD J.OLSON 06NOV02 | | | | | | | |
|  | | PRODUCT SPEC — | | SIZE CAGE CODE DRAWING NO RESTRICTED TO A2 00779 C=147105 — | | | | | | | |
| | | | | | | | | | | APPLICATION SPEC 108-25022 | |
| MATERIAL | | FINISH | | WEIGHT 114-25018 | | | | | | | |
|  | | SEE TABLE | | CUSTOMER DRAWING | | | | | | | |
| | | | | | | SCALE 1:1 | | SHEET 2 of 2 | | REV J9 | |

Mouser Electronics

Authorized Distributor

Click to View Pricing, Inventory, Delivery & Lifecycle Information:

[TE Connectivity:](#)

[2-147105-0](#)