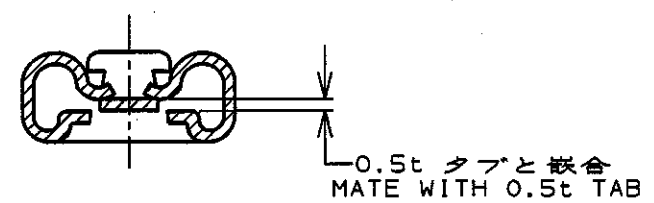
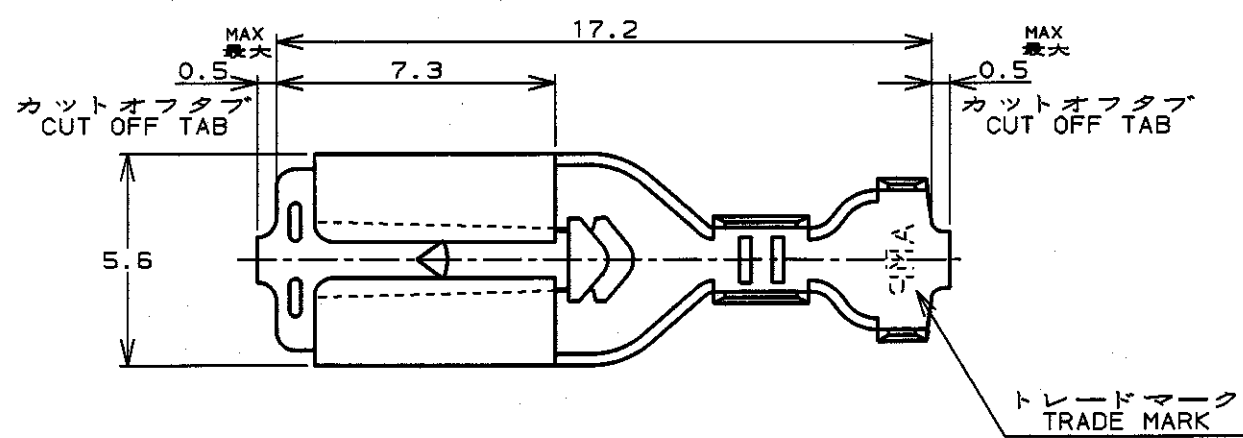
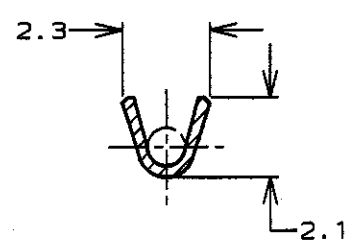


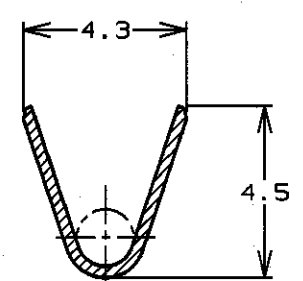
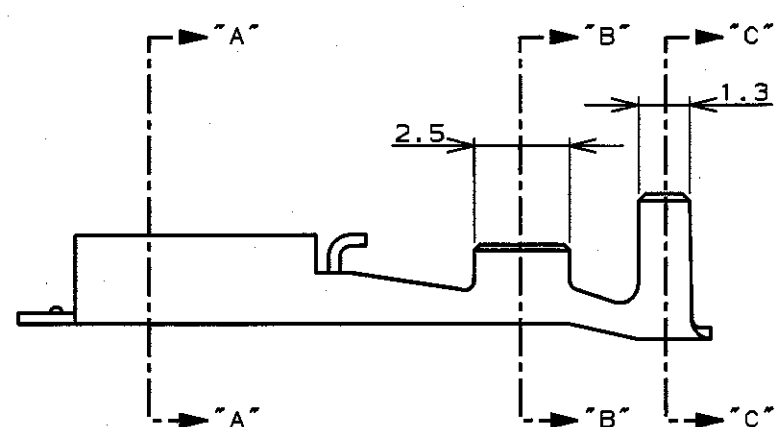
| LOC | DIST | REVISIONS | | | | |
|-----|------|-----------|-----|------------------------|--------------|------------|
| | | P | LTR | DESCRIPTION | ECN | DATE |
| J | --- | | C | REVISED | J-10649 | 25. APR 88 |
| | | | D | REDRAWN WITHOUT CHANGE | FJ00-0723-99 | 10. MAY 99 |



断面 "A" - "A" SECT



断面 "B" - "B" SECT



断面 "C" - "C" SECT

- (注)
1. 適用スリーブ型番: 174737
2. 本端子は連続状態でリール巻き
3. 取扱説明書: 411-5391
- (NOTES)
1. APPLICABLE SLEEVE P/N: 174737
2. CONTINUOUS STRIP ON REEL
3. INSTRUCTION SHEET NO: 411-5391

| | | | |
|--------------------------|----------------------------|--------------------------------|-----------|
| 911587-1 | 173723-1 | PRE TINNED BRASS 錫メッキ黄銅0.3t | 173722-1 |
| HAND TOOL NO. 手動工具型番 | LOOSE PIECE P/N ばら状端子型番 | MATERIAL 材料 | P/N 型番 |
| WIRE RANGE 適合電線断面積 | | INSULATION DIA 被覆外径 | |
| 0.14~0.53mm ² | | 1.3~3.6φmm | |

THIS DRAWING IS A CONTROLLED DOCUMENT FOR AMP INCORPORATED. IT IS SUBJECT TO CHANGE AND THE CONTROLLING ENGINEERING ORGANIZATION SHOULD BE CONTACTED FOR THE LATEST REVISION.

DIMENSIONS:
単位: mm

TOLERANCES UNLESS OTHERWISE SPECIFIED
一般公差
10% : ±0.2
30% : ±0.25
100% : ±0.3
ANGLE : ±3°

MATERIAL
材料
SEE TABLE
表参照

FINISH
仕上

OWN
10. MAY '99
CHK
12. MAY '99
APVD
12. MAY '99

PRODUCT SPEC
製品規格
108-5236

APPLICATION SPEC
取付適用規格
114-5114

WEIGHT

CUSTOMER DRAWING

AMP
日本エー・エム・ピー株式会社
Kawasaki, Japan

187 シリーズ・ポジティブ・ロック-EX
187 SERIES POSITIVE LOCK-EX

SIZE CAGE CODE DRAWING NO
A3 00779 C-173722

RESTRICTED TO
-

SCALE 5-1 SHEET 1 OF 1 REV D

Mouser Electronics

Authorized Distributor

Click to View Pricing, Inventory, Delivery & Lifecycle Information:

[TE Connectivity:](#)

[173723-1](#)