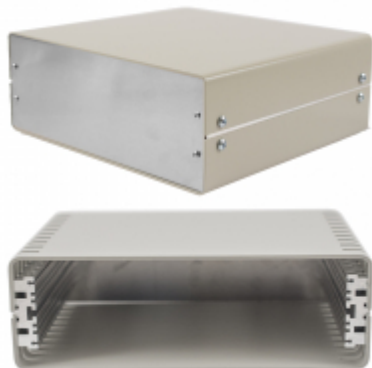




*Quality Products. Service Excellence.*

## Metal Instrument Enclosures 1402 Series

### Key Features:



- Top and bottom made from 12 gauge aluminum finished in beige.
- Top and bottom are attached to an internal aluminum extrusion which contains mounting slots for printed circuit boards or panels.
- Front and rear panels are natural aluminum (paper coated one side) which are attached with screws to the aluminum mounting extrusion.
- Panels can be easily removed for access to components.
- Tops and bottoms are available in solid or with vent slots.
- All hardware and self-adhesive rubber feet are included.
- Replacement hardware packages include front panel screws, side screws, extrusions, and rubber feet.

### Enclosures

Solid	Vented	Height	Width	Depth	PC Board Clearance Width	Fits Eurocard Size	Replacement Hardware Pack
1402B	1402BV	2.40	7.10	4.90	6.34	160 x 100	1402-4H
1402D	1402DV	2.40	7.10	7.30	6.34	160 x 160	1402-7H
1402F	1402FV	3.10	7.10	10.30	6.34	160 x 234	1402-10H
1402H	1402HV	3.90	10.00	7.30	9.25	234 x 160	1402-7H
1402K	1402KV	3.90	10.00	9.60	9.25	234 x 220	1402-9H

*Data subject to change without notice*

© 2020. Hammond Manufacturing Ltd. All rights reserved.

# Mouser Electronics

Authorized Distributor

Click to View Pricing, Inventory, Delivery & Lifecycle Information:

[Hammond:](#)

[1402KV](#) [1402D](#) [1402B](#) [1402H](#) [1402K](#) [1402F](#) [1402FV](#) [1402HV](#) [1402BV](#) [1402DV](#) [1402-7H](#) [1402-9H](#)