

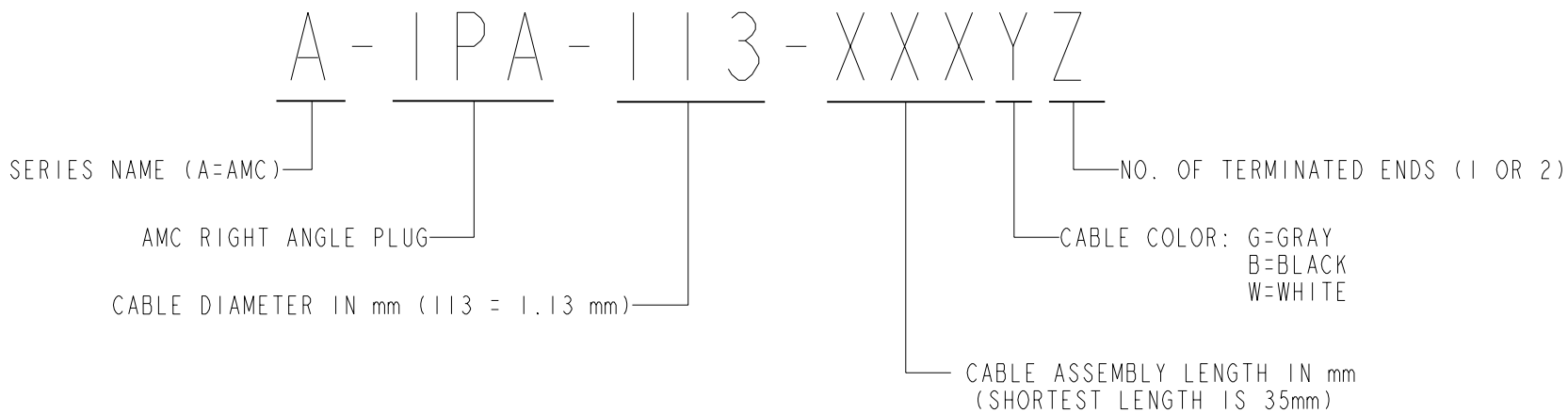
NOTES:


1. ELECTRICAL:
 - A. IMPEDANCE: 50Ω (NOMINAL)
 - B. FREQUENCY RANGE: 0-6 GHz
 - C. CONTACT RESISTANCE: CENTER: $20m\Omega$ MAX.: MEASURED AT 10mA MAX. $25m\Omega$ MAX AFTER CYCLING
OUTSIDE: $10m\Omega$ MAX. $15m\Omega$ MAX AFTER CYCLING
 - D. INSULATION RESISTANCE: $500m\Omega$ MIN.: MEASURED AT 100 VDC.
 - E. WITHSTANDIN VOLTAGE: NO LINE OR INSULATION BREAKDOWN: 200 VAC FOR 1 MIN.
 - F. V.S.W.R. : 1.3 MAX. AT DC TO 3GHz, 1.4 MAX. AT 3 TO 6GHz
2. PHYSICAL:
 - A. FEMALE CONTACT HOLDING FORCE: .15N MIN. : MEASURED WITH A \varnothing .475MM PIN GAUGE.
 - B. DURABILITY: 30 CYCLES
 - C. TEMPERATURE RANGE: -40°C TO +90°C.
 - D. AMC CONNECTOR MATING FORCE: 15N TYPICAL
 - E. AMC CONNECTOR DEMATING FORCE: 10N TYPICAL
 - F. AMC INTERFACE IS FULLY COMPATIBLE WITH "U.FL" SERIES PRODUCT.
3. MATERIALS AND FINISHES:

- A. IMPEDANCE: 50Ω (NOMINAL)
B. FREQUENCY RANGE: 0-6 GHz
C. CONTACT RESISTANCE: CENTER: 20mΩ MAX.: MEASURED AT 10mA MAX. 25 mΩ MAX AFTER CYCLING
OUTSIDE: 10mΩ MAX. 15 mΩ MAX AFTER CYCLING
D. INSULATION RESISTANCE: 500mΩ MIN.: MEASURED AT 100 VDC.
E. WITHSTANDIN VOLTAGE: NO LINE OR INSULATION BREAKDOWN: 200 VAC FOR 1 MIN.
F. V.S.W.R. : 1.3 MAX. AT DC TO 3GHz, 1.4 MAX. AT 3 TO 6GHz

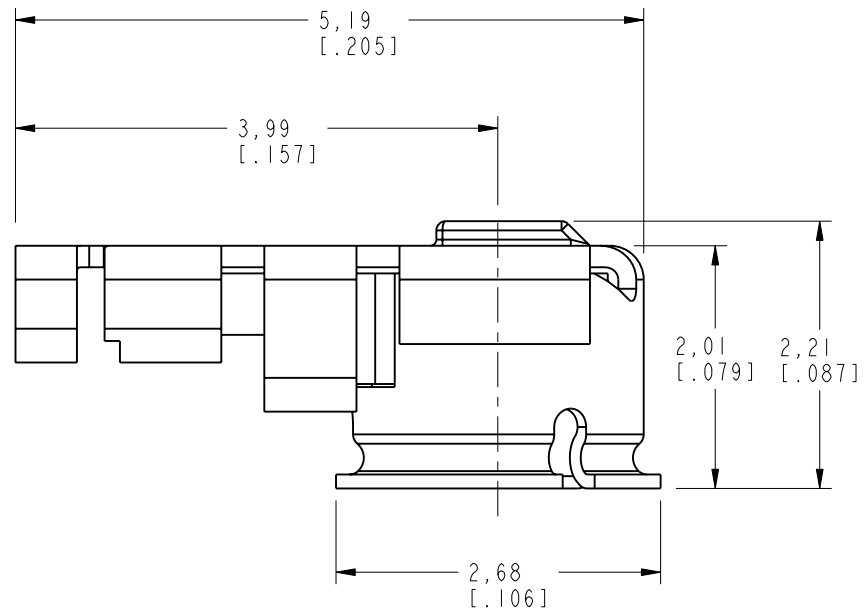
- A. FEMALE CONTACT HOLDING FORCE: .15N MIN. : MEASURED WITH A Ø.475MM PIN GAUGE.
B. DURABILITY: 30 CYCLES
C. TEMPERATURE RANGE: -40°C TO +90°C.
D. AMC CONNECTOR MATING FORCE: .15N TYPICAL
E. AMC CONNECTOR DEMATING FORCE: .10N TYPICAL
F. AMC INTERFACE IS FULLY COMPATIBLE WITH "U.FL" SERIES PRODUCT.

- CONNECTOR BODY: PHOSPHOR BRONZE, SILVER PLATED (.08u MIN.) OVER COPPER (1-2u)
CONNECTOR CENTER CONTACT: PHOSPHOR BRONZE, GOLD PLATED (0.2u MIN.) OVER NICKEL (2-3u)
CONNECTOR INSULATOR: PBT
CABLE JACKET: FEP
CABLE DIELECTRIC: FEP
CABLE CENTER CONDUCTOR: 32AWG ANNEALED COPPER WIRE STRANDED, SILVER PLATED
CABLE OUTER CONDUCTOR: ANNEALED COPPER WIRE BRAID, SILVER PLATED



A-IPA-113-XXXXZ		REVISIONS				
DRAWING NO.		REV	DESCRIPTION	DATE	ECO	APPR
THIRD ANGLE PROJ. 	A	RELEASE TO MFG.		2/20/03	44376	ORB
	B	A) ADDED CABLE MATERIAL & MATE/DEMATE NOTES		3/6/03	44396	ORB
	C	A) BODY PLATING WAS: GOLD PLATED OVER NICKEL B) NOTE 2D WAS: 25N TYPICAL		4/2/03	44402	BCG

CABLE ASSEMBLY OVERALL LENGTH TOLERANCE	
OVERALL LENGTH L (mm)	STANDARD TOLERANCE (mm)
35<L<200	± 4
200 < L 500	± 8
500 < L 1000	± 12
1000 < L	±1.5 %



AMC RIGHT ANGLE PLUG

UNLESS OTHERWISE SPECIFIED, DIMENSIONS ARE IN INCHES AND TOLERANCES ARE: 2 PLACE DECIMAL 3 PLACE DECIMAL ANGLES ±.015 (0.381 mm) ±.005 (0.127 mm) ± 1°			MATERIAL		DRAWN G. ANTONINI		DATE 29-Jan-03		TITLE RIGHT ANGLE PLUG JUMPER			Amphenol Amphenol Corporation Communication and Network Products Division Danbury, CT U.S.A. 06810		
NOTICE - These drawings, specifications, or other data (1) are, and remain the property of Amphenol Corp. (2) must be returned upon request; and (3) are confidential and not to be disclosed to any person other than those to whom they are given by Amphenol Corp. The furnishing of these drawings, specifications, or other data by Amphenol Corp., or to any other person to anyone for any purpose is not to be regarded by implication or otherwise in any manner licensing, granting rights or permitting such holder or any other person to manufacture, use or sell any product, process or design, patented or otherwise, that may in any way be related to or disclosed by said drawings, specifications, or other data.					ENGINEER G. ANTONINI		DATE 29-Jan-03							
			REFERENCE GEN# CASSY68		APPROVED O. BARTHELMES		DATE 2/20/03							
					CAD FILE I:\AMC\A-IPA-113-XXXYZ			CODE ID 74868		DWG SIZE B	DRAWING NO. A-IPA-113-XXXYZ		REV C	

Mouser Electronics

Authorized Distributor

Click to View Pricing, Inventory, Delivery & Lifecycle Information:

[Amphenol:](#)

[A-1PA-113-035B2](#) [A-1PA-113-050G2](#)