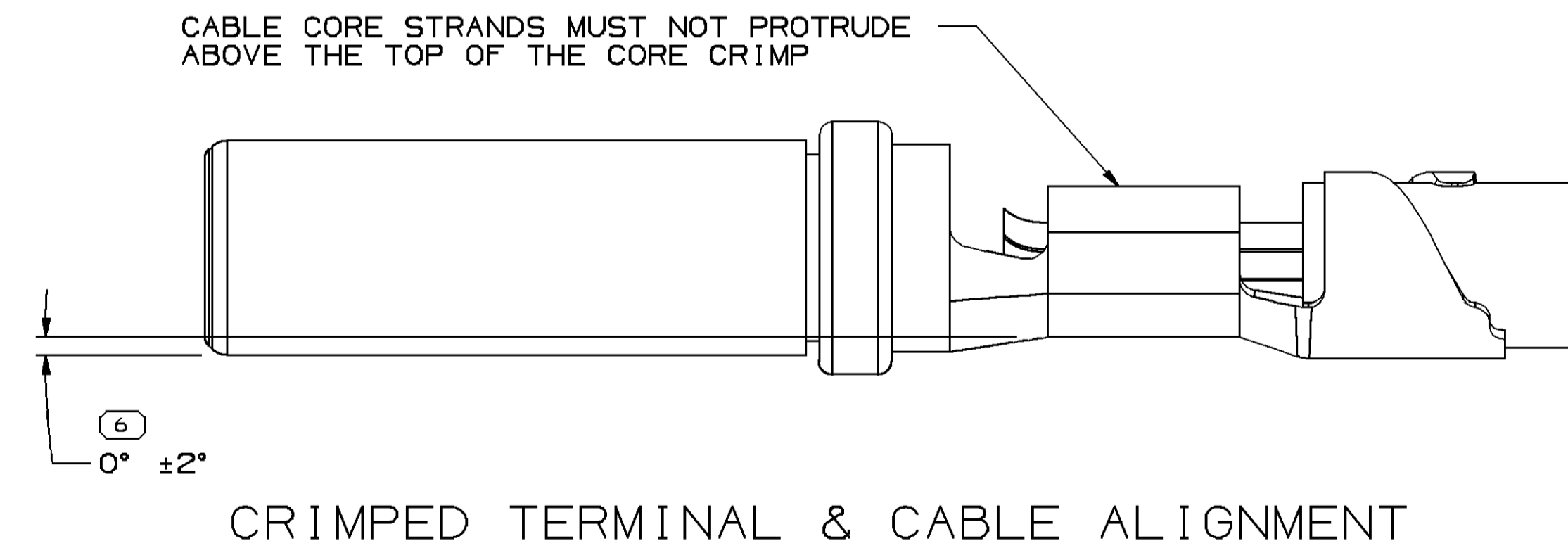
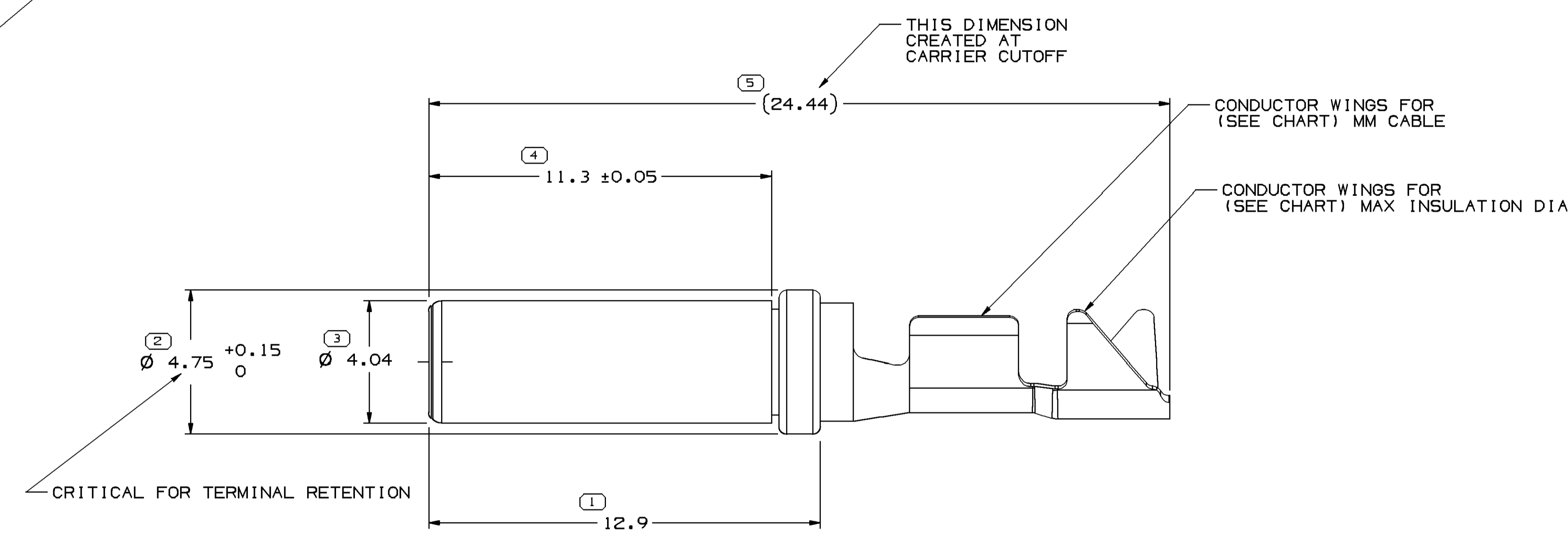
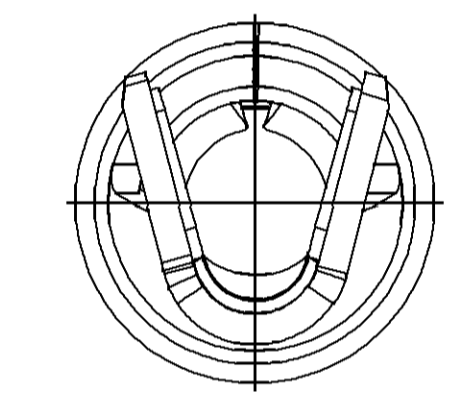
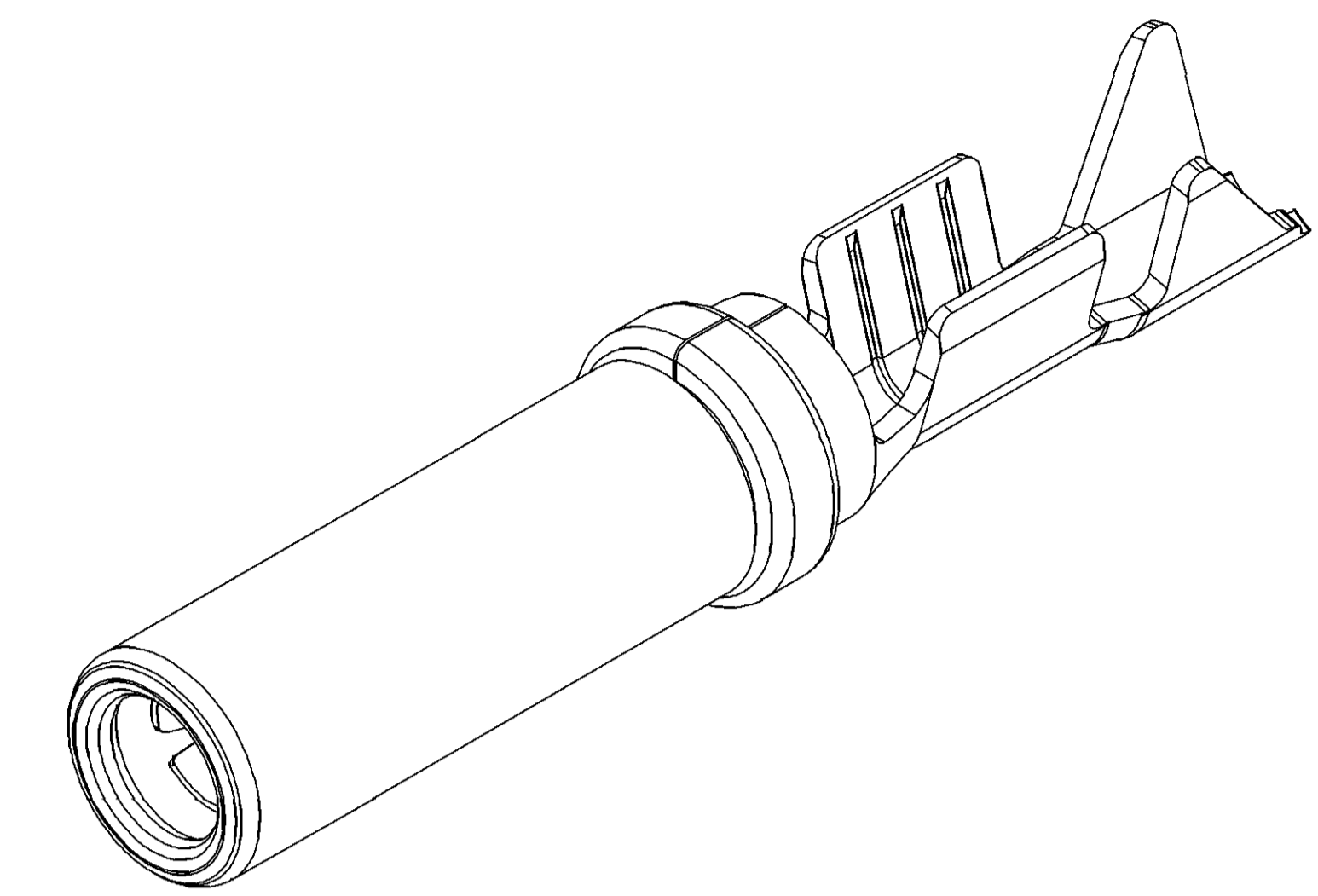
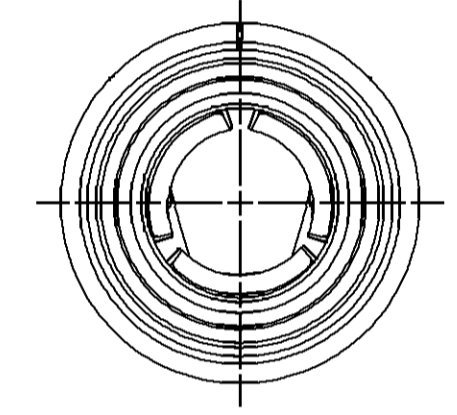
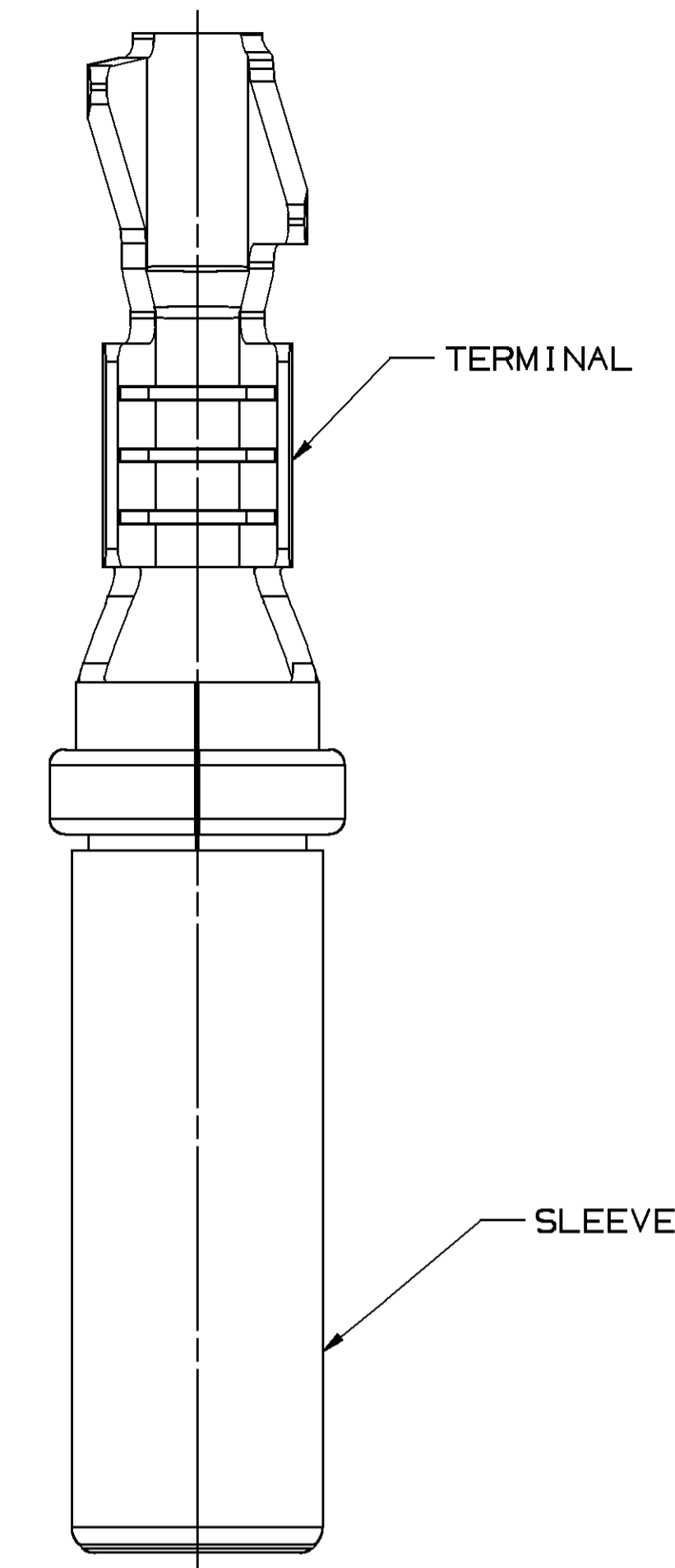


SYMBOL DEFINITION		MISSING SYMBOLS	
A DIMENSION WITHOUT AN INSPECTION REPORT SYMBOL DOES NOT REQUIRE INSPECTION. IT MAY BE CONTROLLED ON THE INDIVIDUAL COMPONENT DRAWING.	TOTAL NO OF INSPECTIONS REQUIRED	NO MISSING SYMBOL NUMBER	
	6		
	LAST NO. USED		
	6		

DWS STATUS						REVISION HISTORY		AUTH	DR	APVD	APVD
DATE	STG	REV	N/P	CHG	ZONE						
16SE09	R	01	-	-		ALL PARTS - CREATED PART DRAWING		408721	CM	CM	PDP
03NO09	R	02	-	-		ALL PARTS - ADDED LUBE TERMINAL NOTE		409378	EGR	JVM	PDP
08AP10	R	03	-	-		ALL ACTIVE PARTS - REVISED GRAPHICS		410520	JTZ	JTZ	PDP
08FE11	R	04	-	-		13867871 - RELEASED		413249	AGM	JAA	BER
28FE11	R	05	-	-		ALL ACTIVE PARTS - ADDED TERMINAL NOTES		413482	HRS	HRS	PDP
10MR11	R	06	-	-		ALL ACTIVE PARTS - REVISED TERMINAL NOTE		413620	HRS	HRS	PDP
11WY11	R	07	-	-		ALL ACTIVE PARTS - ADDED CRITICAL RETENTION LABEL		414224	AGM	JVM	PDP
30MY11	R	08	-	-		ALL ACTIVE PARTS - ADDED ASSEMBLY NOTE		414412	JTZ	JTZ	PDP
06JN11	R	09	-	-		ALL ACTIVE PARTS - UPDATED PDM ATTRIBUTES		414465	BLG	BLG	PDP
22JN11	R	10	-	-		ALL ACTIVE PARTS - ADDED CABLE CORE STRANDS LABEL		414557	AGM	JVM	PDP
08JL11	R	11	-	-		ALL ACTIVE PARTS - UPDATED PDM ATTRIBUTES		414763	CBG	CBG	PDP
06SE11	R	12	-	-		ALL ACTIVE PARTS - REMOVED "MAX CURRENT CAPACITY" & "INSULATION CRIMP" NOTES		415286	MRC	JAA	PDP
14OC11	R	13	-	-		ALL PARTS - ADDED TERMINAL APPLICATION INFORMATION NOTE		415780	JCF	JVM	PDP



- NOTES
- UNLESS OTHERWISE SPECIFIED AND/OR INDICATED:
    - DIMENSIONS ARE TO FACE OF VIEW SHOWN AND AUTOMATICALLY ROUNDED BY COMPUTER FOR INSPECTION (SEE MATH MODEL FOR PRECISE DIMENSIONS). FOR ALL OTHER DIMENSIONS NOT SHOWN BUT REQUIRED FOR TOOL BUILD, SEE MATH MODEL FOR PRECISE TOOL PATH DATA.
  - TERMINAL MUST BE MADE USING NYE 1486 OIL WITH UV TRACE ADDED (NYE LUBRICANTS) MIXED 50/50 WITH FIN LUBE 0177 (PPG INDUSTRIES SPECIALTY PRODUCTS) DURING THE FORM PROCESS.
    - AFTER STAMPING, NYE OIL MUST BE PRESENT ON THE MATING INTERFACE AREA AND ON THE OUTSIDE SURFACE OF THE CRIMP WINGS. THE RECOMMENDED APPLICATION METHOD UTILIZES A MIXTURE QUANTITY OF 0.75 GALLONS PER MILLION TERMINALS. ANY DEVIATION FROM THIS LUBRICANT MUST BE APPROVED BY DELPHI PACKARD PRODUCT ENGINEERING.
  - DO NOT PROBE, TEST OR OTHERWISE CONTACT THE INTERIOR REGION (THE SPRING OR ANY MOVING PART) OF THIS TERMINAL. SEVERE DAMAGE CAN OCCUR, COMPROMISING THE PERFORMANCE OF THE ELECTRICAL INTERFACE.
  - TERMINAL CAN BE USED IN ANY 2.4 MM (SIZE 12 MIL 39029) INDUSTRY STANDARD CAVITY. EXAMPLE DEUTSCH DTP
  - TERMINAL IS A DIRECT REPLACEMENT FOR (EQUIVALENT TO) THE DEUTSCH 1062-12-XXX FAMILY OF STAMPED AND FORMED CONTACTS
  - REFER TO DRAWING NUMBER 13922721 FOR TERMINAL APPLICATION INFORMATION (CURRENT CARRYING CAPABILITY, CABLE CRIMP RANGE, ETC.)

- MATERIAL NOTES :
- TERMINAL: COPPER ALLOY - 0.406 THK  
SLEEVE: STAINLESS STEEL - 0.25 THK
- ASSEMBLY NOTES :
- SLEEVE MUST WITHSTAND PULL-OFF FORCE IN DIRECTION PARALLEL TO CENTER OF TERMINAL OF 60 NEWTONS MIN.

PART NO	REV	N/P	STATUS	CONTACT PLATING	SIZE (MM <sup>2</sup> )	ID	DIA	MATING TERM
13867871	01	AJ	-	SILVER	2-3	13T	2.4-3.35	NA
13783302	01	-	OBSOLETE	GOLD	4-6	10	4-5.7	13783285
13783294	01	-	OBSOLETE	NICKEL	4-6	10	4-5.7	13783270
13783301	02	AJ	-	GOLD	4-6	10T	3.4-4.8	13783284
13783293	02	AJ	-	NICKEL	4-6	10T	3.4-4.8	13783269
13783300	02	AJ	-	GOLD	2-3	13	2.89-4.21	13783283
13783292	02	AJ	-	NICKEL	2-3	13	2.89-4.21	13783268
13783299	02	AJ	-	GOLD	2-3	13T	2.4-3.35	13783282
13783291	02	AJ	-	NICKEL	2-3	13T	2.4-3.35	13783267
13783298	02	AJ	-	GOLD	1.5-2.5	14	2.6-3.7	13783280
13783290	02	AJ	-	NICKEL	1.5-2.5	14	2.6-3.7	13783266
13783297	02	AJ	-	GOLD	1.5-2.5	14T	2.1-3	13783277
13783289	02	AJ	-	NICKEL	1.5-2.5	14T	2.1-3	13783265
13783296	02	AJ	-	GOLD	0.75-1	17	2.2-3.1	13783276
13783288	02	AJ	-	NICKEL	0.75-1	17	2.2-3.1	13783264
13783295	02	AJ	-	GOLD	0.75-1	17T	1.6-2.25	13783273
13783287	02	AJ	-	NICKEL	0.75-1	17T	1.6-2.2	13783263

DWG TYPE: PART DRAWING

STITLE: [Blank]

VOLUME (OMP): [Blank]

DISTR CODE: [Blank]

UNLESS OTHERWISE SPECIFIED

THIS DOCUMENT IS IN ACCORDANCE WITH ASME Y14.5M-1994 AS MODIFIED BY THE GM GLOBAL DIMENSIONING AND TOLERANCING ADDENDUM - 1997. ALL GEOMETRIC TOLERANCES AND RELATED DATUMS SHALL BE TO UNLESS OTHERWISE SPECIFIED. SEPARATE POSITION CALLOUTS MAY BE BARED SEPARATELY, UNLESS OTHERWISE SPECIFIED.

ALL DIMENSIONS ARE IN MILLIMETERS

REFERENCE: [Blank]

THIRD ANGLE PROJECTION

DO NOT SCALE

USE MATH DATA

**DELPHI**

DELPHI PACKARD ELECTRICAL/ELECTRONIC ARCHITECTURE  
WARREN, OH

OR: [Blank]

DATE: [Blank]

APVD1: C. MARGRAVE 16SE09

APVD2: C. MARGRAVE 16SE09

APVD3: PAUL DEPOMPEI 24SE09

APVD4: [Blank]

APVD5: [Blank]

SUBSTANCES OF CONCERN AND RECYCLED CONTENT PER DELPHI (09-09-00)

MATERIAL: [Blank]

SEE MATERIAL NOTES

DRAWING NAME: TAXI TERM F HES 2.4 UNKN

DRAWING NUMBER: 13783286

SIZE: A0

SCALE: 10:1

FRAME NO: 1 OF 1

SHEET NO: 1 OF 1

STG: R

REV: 13

N/P: -

# Mouser Electronics

Authorized Distributor

Click to View Pricing, Inventory, Delivery & Lifecycle Information:

[Aptiv:](#)

[13783301-L](#)