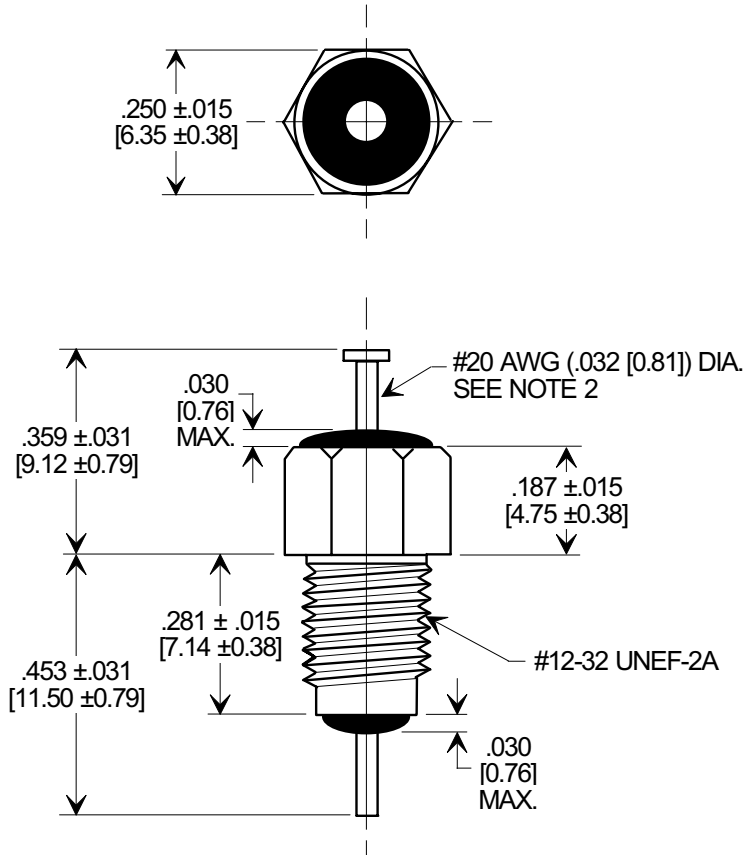
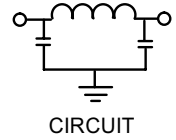
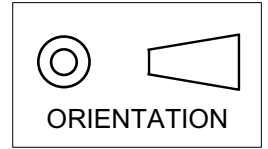


MARKETING SALES DRAWING

DIMENSIONS IN INCHES - DO NOT SCALE THIS DRAWING
 DIMENSIONS IN METRIC - []

Electrical Testing
 per Tusonix standard
 test plans and Mil-Std-202
 Test Methods.



NOTES:

- SUPPLIED WITH SILVER PLATED HEX NUT AND LOCKWASHER.
- 4202-501 SUPPLIED WITH TURRET HEAD OPTION, 4202-503 SUPPLIED WITHOUT TURRET HEAD.

MIN. CAP. (pF)	WORKING VOLTAGE (VVdc)		CURRENT (Idc)	DWV (VDC)	I.R. MIN. @ 100 VDC	MINIMUM NO LOAD INSERTION LOSS (dB) AT 25°C PER MIL-STD -220			
	85°C	125°C				10 MHz	100 MHz	1 GHz	10 GHz
1500		200/140 AC	10 AC	500	10 G Ω	----	45	70	70

X-2015 Rev-0 REVISION RECORD Original Release C.O. 20020607-1-01	0	--TOLERANCES-- Unless Otherwise Specified DECIMAL ± ANGLES ±	Title MIL-15733/61-0002 BUSHING STYLE EMI FILTER		
	TUSONIX TUCSON, ARIZONA		Drawn L.E. 06-07-02	Scale 3 X	
	A		Approved T.C. 06-07-02		
	4202-501				

Mouser Electronics

Authorized Distributor

Click to View Pricing, Inventory, Delivery & Lifecycle Information:

[Tusonix / CTS:](#)

[4202-501](#)