

10

9

8

7

6

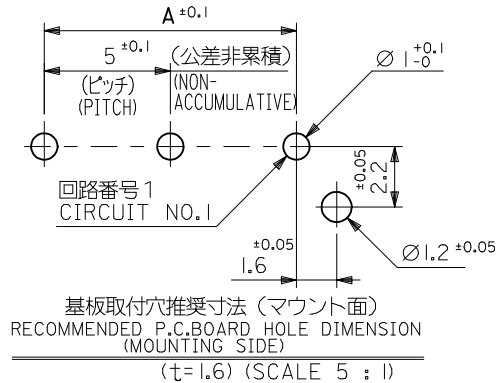
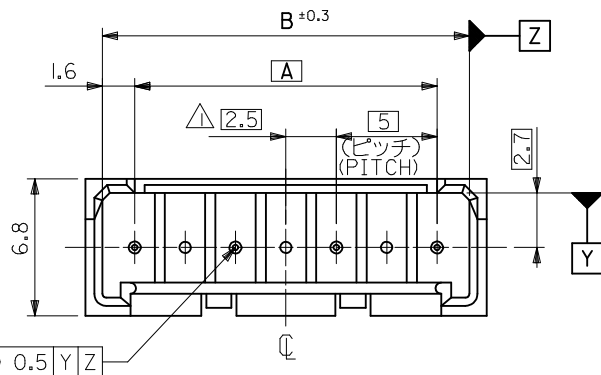
5

4

3

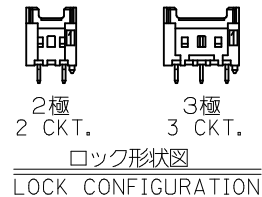
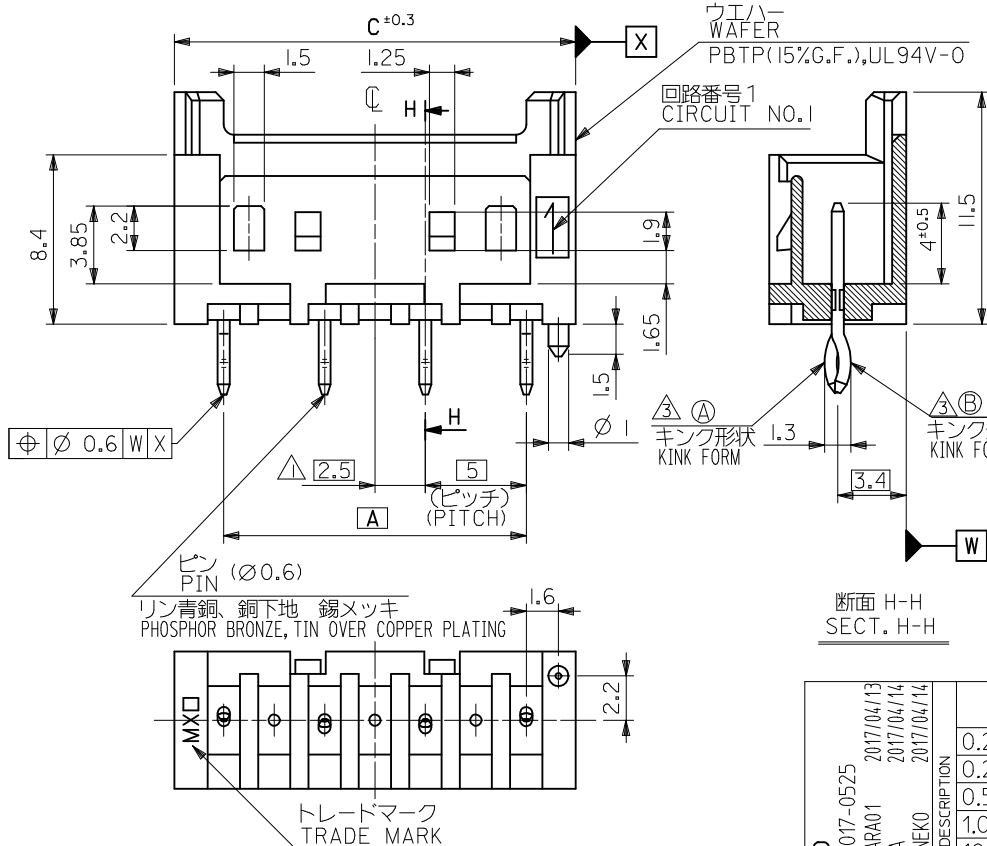
2

1

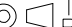


注記 NOTES

- △ 偶数極品に適用。
APPLIES ONLY TO EVEN NO. CKT. SIZES.
2. 嵌合相手: 51102, 51103 シリーズ
MATES WITH: 51102, 51103 SERIES.
- △ 3極以上のキンク形状は両サイドが ㊶、その他の極はすべて ㊵ 形状とする。
KINK FORM
MORE THAN 2 CIRCUIT:
PINS AT BOTH ENDS ARE KINK FORMED TO ㊶,
THE OTHER PINS ARE KINK FORMED TO ㊵.



RED	14.9	13.2	10	53376 -0312	3
	9.9	8.2	5	-0212	2
NATURAL	39.9	38.2	35	-0810	8
	34.9	33.2	30	-0710	7
	29.9	28.2	25	-0610	6
	24.9	23.2	20	-0510	5
	19.9	18.2	15	-0410	4
	14.9	13.2	10	-0310	3
	9.9	8.2	5	53376 -0210	2
COLOR	C	B	A	MATERIAL NO.	極数 NO. OF CKTS.

REVISED EC NO: J2017-0525 DRWN: S0BARA01 CHKD: AIDA APPR: KANEKO	2017/04/13 2017/04/14 2017/04/14	DESCRIPTION	GENERAL TOLERANCES (UNLESS SPECIFIED)			DIMENSION STYLE MM ONLY		SCALE 4:1	DESIGN UNITS METRIC	 THIRD ANGLE PROJECTION
			0.25 UNDER	UNDER	± 0.03	DRAWN BY	DATE	TITLE 5.0 WIRE TO BOARD CONN. WAFER ASSY WITH KINK -LEAD FREE-		
			0.25 OVER	0.5 UNDER	± 0.05	K. TOJO	1992/05/06			
			0.5 OVER	1.0 UNDER	± 0.1	CHECKED BY	DATE			
			1.0 OVER	10 UNDER	± 0.2	H. HIRAMOTO	1993/02/09			
			10 OVER	30 UNDER	± 0.25	APPROVED BY	DATE	DOCUMENT NO. molex SD-53376-**-10		
			30 OVER		± 0.3	MATERIAL NO.			SHEET NO. 1 OF 1	
ANGULAR ±3 °			SEE CHART							
D	REV	DRAFT WHERE APPLICABLE MUST REMAIN WITHIN DIMENSIONS			SIZE A3	THIS DRAWING CONTAINS INFORMATION THAT IS PROPRIETARY TO MOLEX ELECTRONIC TECHNOLOGIES, LLC AND SHOULD NOT BE USED WITHOUT WRITTEN PERMISSION				

9

8

7

6

5

4

3

2

1

10

9

8

7

6

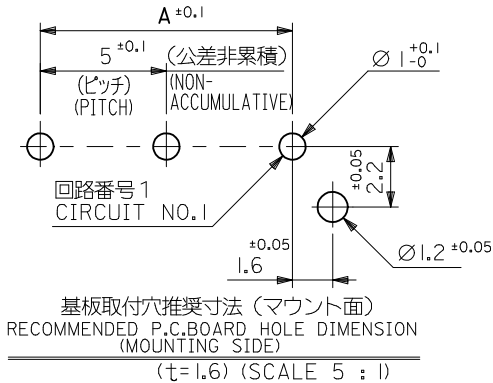
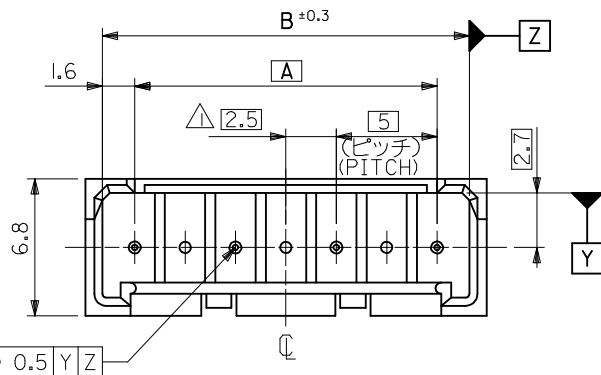
5

4

3

2

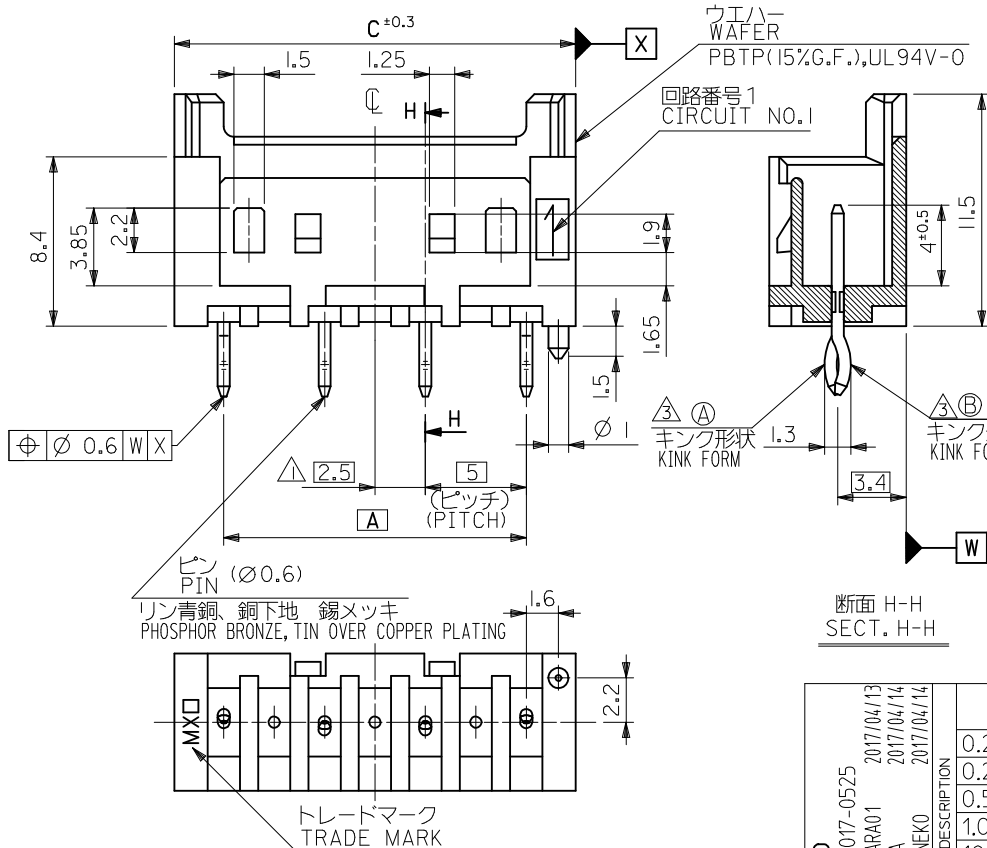
1



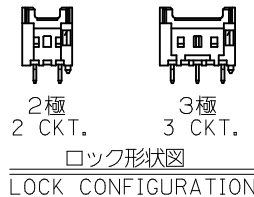
注記 NOTES

- 偶数極品に適用。
APPLIES ONLY TO EVEN NO. CKT. SIZES.
- 嵌合相手：51102, 51103 シリーズ
MATES WITH : 51102, 51103 SERIES.
- 3極以上のキンク形状は両サイドが (A)、その他の極はすべて (B) 形状とする。
KINK FORM
MORE THAN 2 CURCUIT:
PINS AT BOTH ENDS ARE KINK FORMED TO (A),
THE OTHER PINS ARE KINK FORMED TO (B).


基板取付穴推奨寸法 (マウント面)
RECOMMENDED P.C.BOARD HOLE DIMENSION
(MOUNTING SIDE)
($\tau=1.6$) (SCALE 5 : 1)



断面 H-H
SECT. H-H



RED	14.9	13.2	10	53376 -0312	3
	9.9	8.2	5	-0212	2
NATURAL	39.9	38.2	35	-0810	8
	34.9	33.2	30	-0710	7
	29.9	28.2	25	-0610	6
	24.9	23.2	20	-0510	5
	19.9	18.2	15	-0410	4
	14.9	13.2	10	-0310	3
	9.9	8.2	5	53376 -0210	2
COLOR	C	B	A	MATERIAL NO.	極数 NO. OF CKTS.

REVISED EC NO: J2017-0525 DRWN: S0BARA01 CHKD: AIDA APPR: KANEKO	2017/04/13 2017/04/14 2017/04/14	DESCRIPTION	GENERAL TOLERANCES (UNLESS SPECIFIED)			DIMENSION STYLE MM ONLY		SCALE 4:1	DESIGN UNITS METRIC	 THIRD ANGLE PROJECTION
			0.25 UNDER	UNDER	±0.03	DRAWN BY	DATE	TITLE 5.0 WIRE TO BOARD CONN. WAFER ASSY WITH KINK -LEAD FREE- molex		
			0.25 OVER	0.5 UNDER	±0.05	K. TOJO	1992/05/06			
			0.5 OVER	1.0 UNDER	±0.1	CHECKED BY	DATE			
			1.0 OVER	10 UNDER	±0.2	H. HIRAMOTO	1993/02/09			
			10 OVER	30 UNDER	±0.25	APPROVED BY	DATE			
			30 OVER		±0.3	MATERIAL NO. SEE CHART		DOCUMENT NO. SD-53376-**10	SHEET NO. 1 OF 1	
			ANGULAR	±3 °						
			DRAFT WHERE APPLICABLE MUST REMAIN WITHIN DIMENSIONS							
			REV							
D										

Mouser Electronics

Authorized Distributor

Click to View Pricing, Inventory, Delivery & Lifecycle Information:

Molex:

[53376-0210](#) [53376-0510](#)