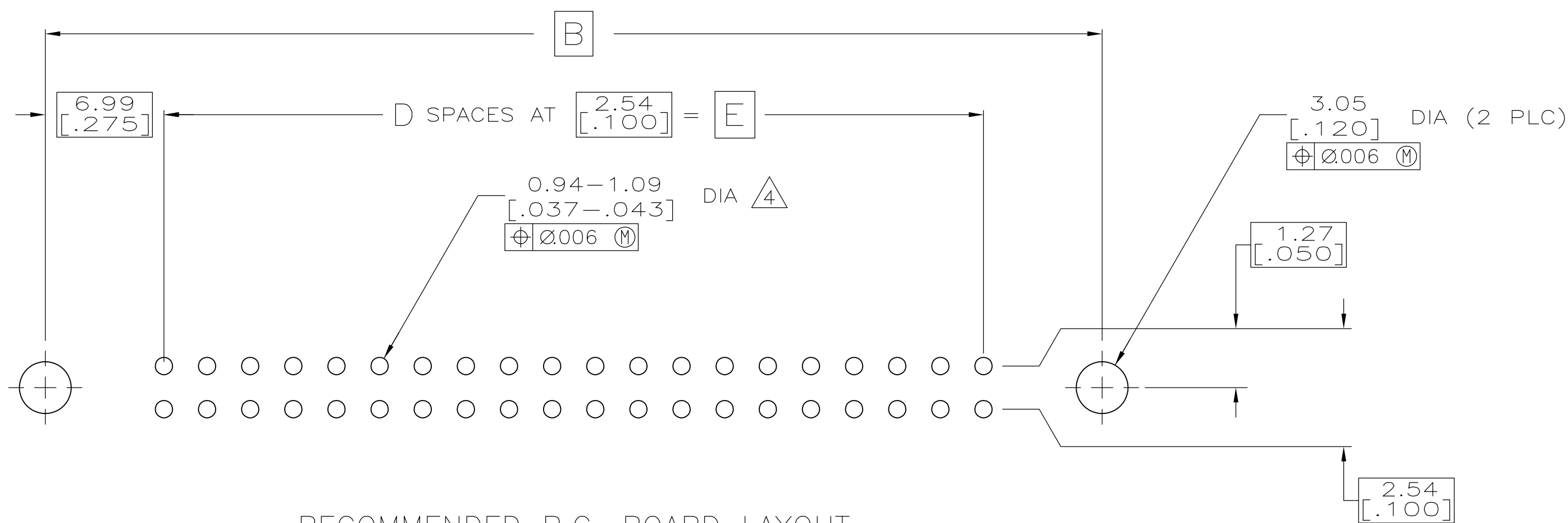
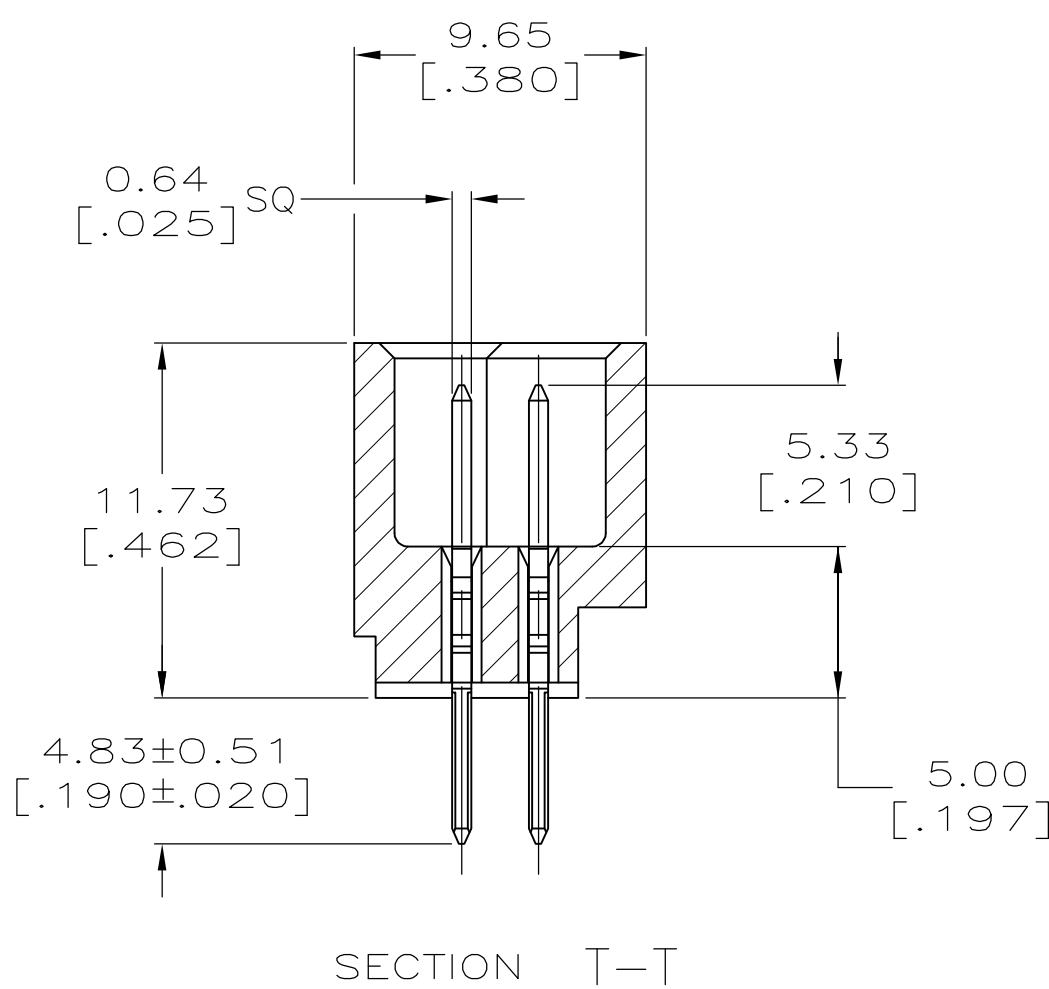
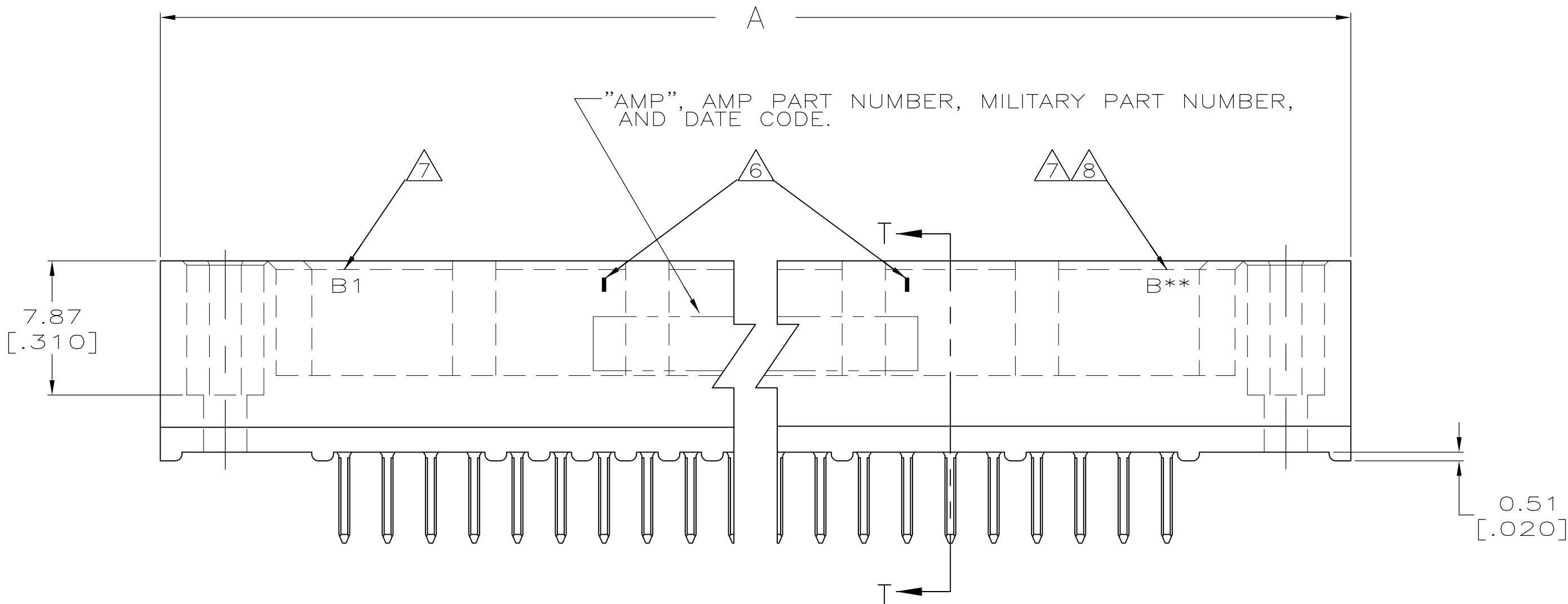
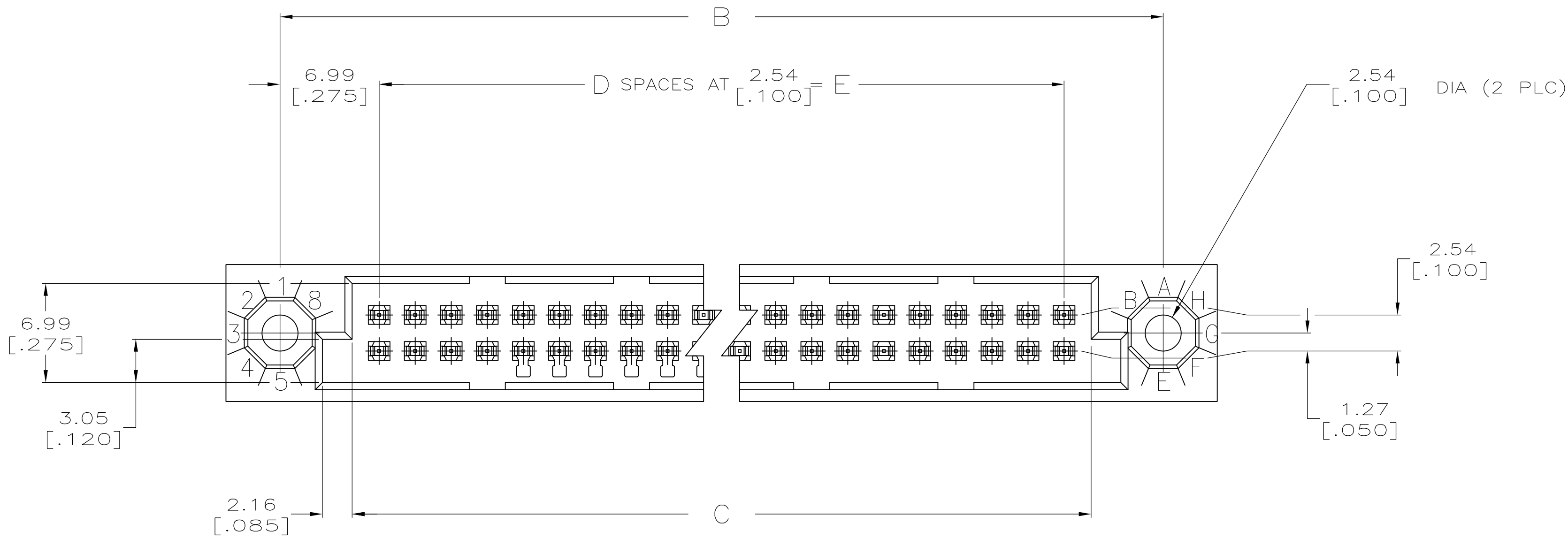




LOC		DIST		REVISONS				
AD	25	P	LTR	DESCRIPTION		DATE	DWN	APVD
		D2	REVISED	PER	ECO-11-008907	22AUG11	HMR	AS



RECOMMENDED P.C. BOARD LAYOUT

THIS DRAWING IS A CONTROLLED DOCUMENT.			DWN T. HOFFMAN	2/25/93		 TE Connectivity		
DIMENSIONS: mm [INCHES]			CHK G. SKIPPER	03/23/93		NAME HDI, 2 ROW, PIN ASSEMBLY, 4.83 [.190] LONG SOLDER PINS, .00076 [.000050] GOLD PLATE		
			APVD -					
TOLERANCES UNLESS OTHERWISE SPECIFIED: 0 PLC ± - 1 PLC ± - 2 PLC ± - 3 PLC ± 0.13 [.005] 4 PLC ± - ANGLES FINISH			PRODUCT SPEC		SIZE CAGE CODE DRAWING NO RESTRICTED TO			
			APPLICATION SPEC					
			WEIGHT -					
			CUSTOMER DRAWING					
MATERIAL 			A1		00779		C533903	
					SCALE 4:1		SHEET 1 OF 2	
							REV D2	

8

7

6

5

4

3

2

1

THIS DRAWING IS UNPUBLISHED.

RELEASED FOR PUBLICATION

ALL RIGHTS RESERVED.

LOCAD

DIST25

REVISONS

FR	LTR	DESCRIPTION	DATE	DWN	APVD
-	-	SEE SHEET 1	-	-	-

1

HOUSING MATERIAL: THERMOPLASTIC, COLOR-NATURAL.

2

CONTACT MATERIAL: PHOSPHOR BRONZE.

3

CONTACT FINISH: .00127-.00254 [.000050-.000100] NICKEL UNDERPLATE ALL OVER; .00127 [.000050] GOLD PLATE IN CONTACT AREA, TIN-LEAD PLATED POSTS.

4

SOLDER PIN POST RECOMMENDED P.C. BOARD HOLE SIZES ARE 0.94-1.09 [.037-.043]; RECOMMENDED PAD DIA IS 1.52 [.060].

5

DIMENSIONS IN BRACKETS ARE IN INCHES.

6

MARK EVERY TENTH POST POSITION.

7

MARK ROW B AND FIRST-LAST POSITION IDENT. NUMBER PER AMP SPEC. 115-9063.

8

TOTAL NUMBER OF POSITIONS PER ROW.

-	N/A	137.16 [5.400]	54	140.97 [5.550]	151.13 [5.950]	158.75 [6.250]	110	1-533903-1
-	M55302/173-150	187.96 [7.400]	74	191.77 [7.550]	201.93 [7.950]	209.55 [8.250]	150	1-533903-0
-	M55302/173-87	124.46 [4.900]	49	128.27 [5.050]	138.43 [5.450]	146.05 [5.750]	100	533903-8
-	-	73.66 [2.900]	29	77.47 [3.050]	87.63 [3.450]	95.25 [3.750]	60	533903-6
-	-	-	-	-	-	-	-	533903-5
-	-	-	-	-	-	-	-	533903-4
-	M55302/173-24	48.26 [1.900]	19	52.07 [2.050]	62.23 [2.450]	69.85 [2.750]	40	533903-3
-	-	-	-	-	-	-	-	533903-2
-	-	-	-	-	-	-	-	533903-1
NOTES	MILITARY PART NUMBER	E	D	C	B	A	POSN	PART NUMBER

THIS DRAWING IS A CONTROLLED DOCUMENT.

DIMENSIONS:
mm [INCHES]

0 PLC ± -

1 PLC ± -

2 PLC ± -

3 PLC ± 0.13 [.005]

4 PLC ± -

ANGLES
FINISH

1

2

3

DWN
T. HOFFMAN
CHK
G. SKIPPER
APVD
-

2/25/93
03/23/93
-

PRODUCT SPEC

APPLICATION SPEC

WEIGHT -

SIZE
A1

CAGE CODE
00779

DRAWING NO
533903

RESTRICTED TO
-

TE Connectivity

HDI, 2 ROW, PIN ASSEMBLY,
4.83 [.190] LONG SOLDER PINS,
.00076 [.000050] GOLD PLATE

SCALE 4:1

SHEET 2 OF 2

REV D2

4805 (3/11)

Mouser Electronics

Authorized Distributor

Click to View Pricing, Inventory, Delivery & Lifecycle Information:

[TE Connectivity:](#)

[1-533903-0](#)