

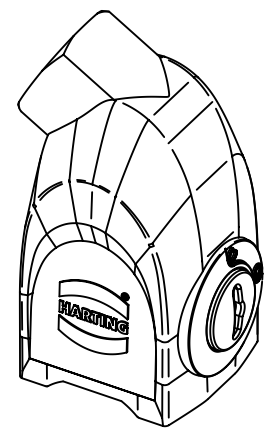
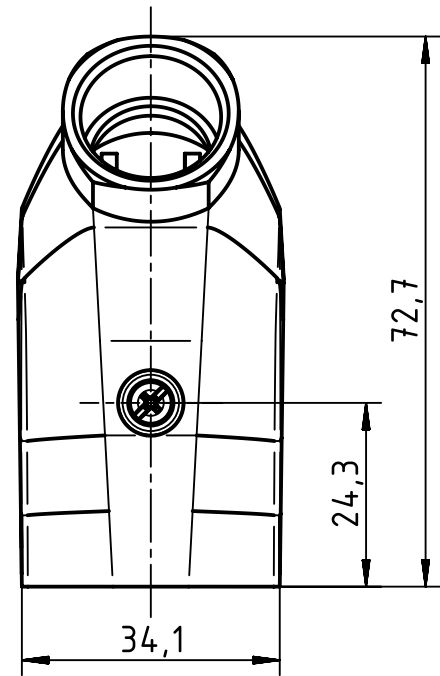
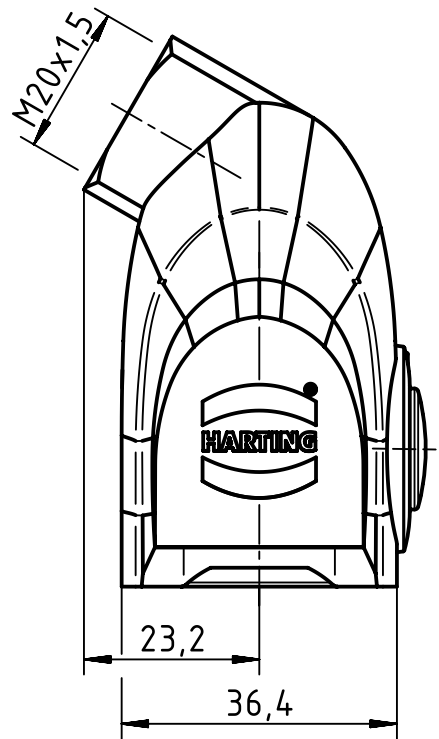
1 2 3 4 5 6

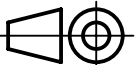

A

B

C

D



| | | | | | |
|--|--------------------------------------|----------------|-----------------|------------|--|
|  All Dimensions in mm Original Size DIN A4 | Scale | Free size tol. | | | Ref. |
| | 1:1 | | | | Sub. |
|  All rights reserved Department EL PD - DE | Created by | Inspected by | Standardisation | Date | State |
| | HOLLERT | RIEPE | TIEMANNA | 2013-11-14 | Final Release |
| HARTING Electric GmbH & Co. KG D-32339 Espelkamp | Title | | | | Doc-Key / ECM-Nr. 100226228/UGD/011/C 500000068530 |
| | Han-Yellock 10 hood M20 angled entry | | | | |
| Type | | Number | | Rev. | Page |
| TB | | 11 20 003 1600 | | C | 1/1 |

Mouser Electronics

Authorized Distributor

Click to View Pricing, Inventory, Delivery & Lifecycle Information:

[HARTING:](#)

[11200031600](#) [19302160292](#)