

## Base strip - MCV 1,5/13-GF-3,81 - 1830703

Please be informed that the data shown in this PDF Document is generated from our Online Catalog. Please find the complete data in the user's documentation. Our General Terms of Use for Downloads are valid (<http://phoenixcontact.com/download>)

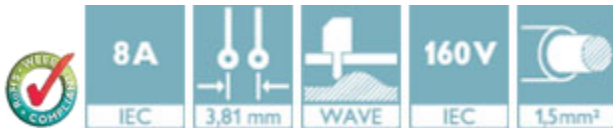
Header, Nominal current: 8 A, Rated voltage (III/2): 160 V, Number of positions: 13, Pitch: 3.81 mm, Color: green, Contact surface: Tin, Mounting: Wave soldering




The figure shows a 10-position version of the product

### Product Features

- Versions with engagement noses for locking plugs with self-locking flanges
- Low-profile pin strips with compact pitches



### Key Commercial Data

|                                      |   |
|--------------------------------------|---|
| Packing unit                         | 1 pc  |
| GTIN                                 | <br>4 017918 051358 |
| Weight per Piece (excluding packing) | 4.57 g  |
| Custom tariff number                 | 85366990  |
| Country of origin                    | Germany   |

### Technical data

#### Dimensions

|                          |              |
|--------------------------|--------------|
| Length                   | 7.25 mm      |
| Pitch                    | 3.81 mm      |
| Dimension a              | 45.72 mm     |
| Constructional height    | 10 mm        |
| Length of the solder pin | 3.4 mm       |
| Pin dimensions           | 0,8 x 0,8 mm |
| Hole diameter            | 1.2 mm       |

## Base strip - MCV 1,5/13-GF-3,81 - 1830703

### Technical data

#### General

|  |                |
|--|----------------|
| Range of articles                      | MCV 1,5/...-GF |
| Insulating material group              | IIIa           |
| Rated surge voltage (III/3)            | 2.5 kV         |
| Rated surge voltage (III/2)            | 2.5 kV         |
| Rated surge voltage (II/2)             | 2.5 kV         |
| Rated voltage (III/3)                  | 160 V          |
| Rated voltage (III/2)                  | 160 V          |
| Rated voltage (II/2)                   | 250 V          |
| Connection in acc. with standard       | EN-VDE         |
| Nominal current I <sub>N</sub>         | 8 A            |
| Maximum load current                   | 8 A            |
| Insulating material                    | PBT            |
| Flammability rating according to UL 94 | V0             |
| Color                                  | green          |
| Number of positions                    | 13             |

#### Standards and Regulations

|  |        |
|--|--------|
| Connection in acc. with standard       | EN-VDE |
|  | CSA    |
| Flammability rating according to UL 94 | V0     |

### Classifications

#### eCl@ss

|            |          |
|------------|----------|
| eCl@ss 4.0 | 272607xx |
| eCl@ss 4.1 | 27260701 |
| eCl@ss 5.0 | 27260701 |
| eCl@ss 5.1 | 27260701 |
| eCl@ss 6.0 | 27260704 |
| eCl@ss 7.0 | 27440402 |
| eCl@ss 8.0 | 27440402 |
| eCl@ss 9.0 | 27440402 |

#### ETIM

|          |          |
|----------|----------|
| ETIM 3.0 | EC001121 |
| ETIM 4.0 | EC002637 |
| ETIM 5.0 | EC002637 |

# Base strip - MCV 1,5/13-GF-3,81 - 1830703

## Classifications

### UNSPSC

|               |          |
|---------------|----------|
| UNSPSC 6.01   | 30211810 |
| UNSPSC 7.0901 | 39121409 |
| UNSPSC 11     | 39121409 |
| UNSPSC 12.01  | 39121409 |
| UNSPSC 13.2   | 39121409 |

## Approvals

### Approvals


#### Approvals


CSA / VDE Gutachten mit Fertigungsüberwachung / IEC60335 CB Scheme / CCA / EAC / cULus Recognized / EAC

#### Ex Approvals

#### Approvals submitted

## Approval details

|   |       |       |
|---|-------|-------|
| CSA  |       |       |
|   | B     | D     |
| Nominal current I <sub>N</sub>  | 8 A   | 8 A   |
| Nominal voltage U <sub>N</sub>  | 300 V | 300 V |

|   |       |
|---|-------|
| VDE Gutachten mit Fertigungsüberwachung  |       |
| Nominal current I <sub>N</sub>  | 8 A   |
| Nominal voltage U <sub>N</sub>  | 160 V |

# Base strip - MCV 1,5/13-GF-3,81 - 1830703

## Approvals

|                    |       |
|--------------------|-------|
| IECEE CB Scheme    |       |
| Nominal current IN | 8 A   |
| Nominal voltage UN | 160 V |

|                    |       |
|--------------------|-------|
| CCA                |       |
| Nominal current IN | 8 A   |
| Nominal voltage UN | 160 V |

|     |
|-----|
| EAC |
|-----|

|                    |       |       |
|--------------------|-------|-------|
| cULus Recognized   |       |       |
|                    | B     | D     |
| Nominal current IN | 8 A   | 8 A   |
| Nominal voltage UN | 300 V | 300 V |

|     |
|-----|
| EAC |
|-----|

## Accessories

Accessories

Coding element

Coding profile - CP-MSTB - 1734634

Coding profile, is inserted into the slot on the plug or inverted header, red insulating material



Labeled terminal marker

## Base strip - MCV 1,5/13-GF-3,81 - 1830703

### Accessories

Marker card - SK 3,81/2,8:FORTL.ZAHLEN - 0804109



Marker card, Card, white, labeled, Horizontal: Consecutive numbers 1 - 10, 11 - 20, etc. up to 91 - (99)100, Mounting type: Adhesive, for terminal block width: 3.81 mm, Lettering field: 3.81 x 2.8 mm

---

### Additional products

Printed-circuit board connector - FMC 1,5/13-STF-3,81 - 1748464



Plug component, Nominal current: 8 A, Rated voltage (III/2): 160 V, Number of positions: 13, Pitch: 3.81 mm, Connection method: Push-in spring connection, Color: green, Contact surface: Tin

---

Printed-circuit board connector - MC 1,5/13-STF-3,81 - 1827813



Plug component, Nominal current: 8 A, Rated voltage (III/2): 160 V, Number of positions: 13, Pitch: 3.81 mm, Connection method: Screw connection with tension sleeve, Color: green, Contact surface: Tin

---

Printed-circuit board connector - MCVR 1,5/13-STF-3,81 - 1828456



Plug component, Nominal current: 8 A, Rated voltage (III/2): 160 V, Number of positions: 13, Pitch: 3.81 mm, Connection method: Screw connection with tension sleeve, Color: green, Contact surface: Tin

---

Printed-circuit board connector - MCVW 1,5/13-STF-3,81 - 1828605



Plug component, Nominal current: 8 A, Rated voltage (III/2): 160 V, Number of positions: 13, Pitch: 3.81 mm, Connection method: Screw connection with tension sleeve, Color: green, Contact surface: Tin

## Base strip - MCV 1,5/13-GF-3,81 - 1830703

### Accessories

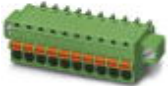
Printed-circuit board connector - FRONT-MC 1,5/13-STF-3,81 - 1850961

Plug component, Nominal current: 8 A, Rated voltage (III/2): 160 V, Number of positions: 13, Pitch: 3.81 mm, Connection method: Front screw connection, Color: green, Contact surface: Tin



Printed-circuit board connector - FK-MCP 1,5/13-STF-3,81 - 1851342

Plug component, Nominal current: 8 A, Rated voltage (III/2): 160 V, Number of positions: 13, Pitch: 3.81 mm, Connection method: Push-in spring connection, Color: green, Contact surface: Tin



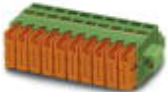
Printed-circuit board connector - MCC 1/13-STZF-3,81 - 1852477

Plug component, Nominal current: 8 A, Rated voltage (III/2): 160 V, Number of positions: 13, Pitch: 3.81 mm, Connection method: Crimp connection, Color: green, Corresponding female crimp contacts with current [A] and conductor cross section range [mm<sup>2</sup>] data: 5A/MCC-MT 0,2-0,35 (1859988); 8A/MCC-MT 0,5-1,0 (1859991)



Printed-circuit board connector - QC 0,5/13-STF-3,81 - 1897652

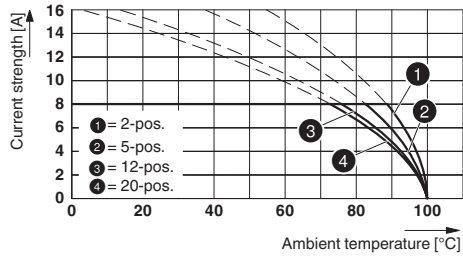
Plug component, Nominal current: 6 A, Rated voltage (III/2): 200 V, Number of positions: 13, Pitch: 3.81 mm, Connection method: Displacement connection, Color: green, Contact surface: Tin



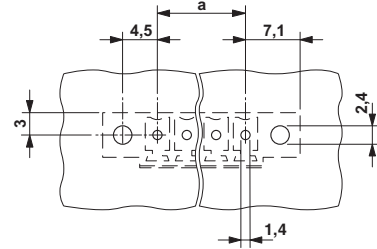
### Drawings

# Base strip - MCV 1,5/13-GF-3,81 - 1830703

Diagram

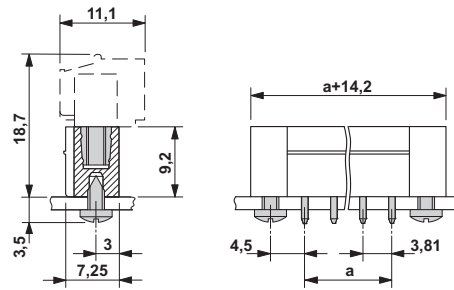


Drilling diagram



Type: MC 1,5/...-STF-3,81 with MCV 1,5/...-GF-3,81

Dimensional drawing



# Mouser Electronics

Authorized Distributor

Click to View Pricing, Inventory, Delivery & Lifecycle Information:

[Phoenix Contact:](#)

[1830703](#)