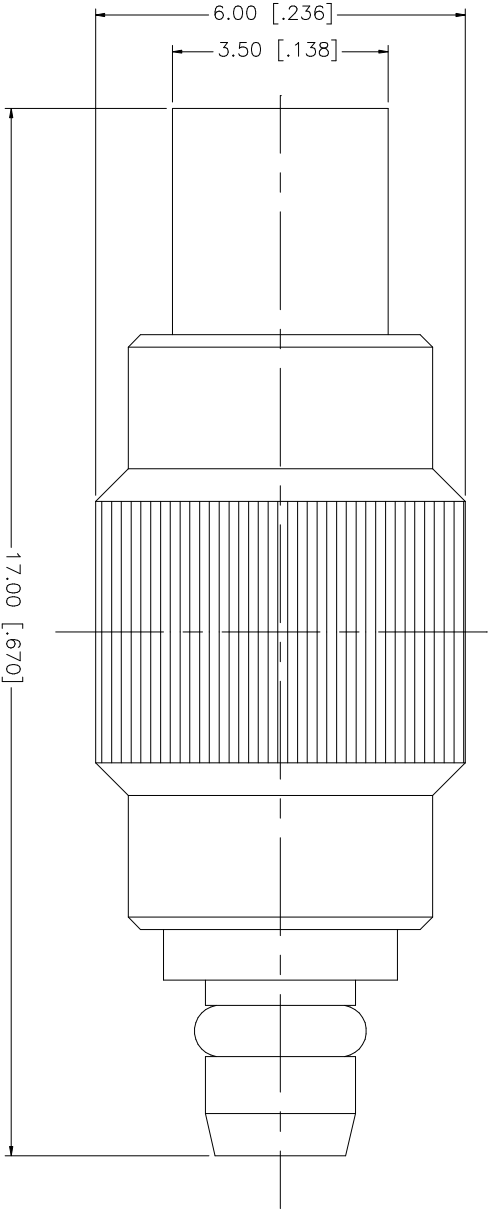


REV.	DATE	DESCRIPTION
NC	01/31/03	INITIAL RELEASE
A	12/20/05	REVISE PART DESCRIPTION



					UNLESS OTHERWISE SPECIFIED DIMENSIONS ARE IN MILLIMETERS. DIMENSIONS IN [] ARE IN INCHES AND FOR CUSTOMER REFERENCE ONLY.	APPROVALS	DATE	
8					UNLESS OTHERWISE SPECIFIED TOLERANCES FOR MILLIMETERS ARE:	DRAWN	G.R.S.	12/20/05
7					0.5 – 8mm ± 0.20mm	CHECKED		
6					8 – 30mm ± 0.40mm	ISSUED		
5					30 – 120mm ± 0.50mm	SHEET	1 OF 1	
4					UNLESS OTHERWISE SPECIFIED TOLERANCES FOR INCHES ARE:	PART DESCRIPTION		
3	CONTACT PIN	BER, COPPER	GOLD	1	.020 – .315 = ± 0.007"	MMCX PLUG TO JACK ADAPTER		
2	INSULATOR	TEFLON	NATURAL	1	.315 – 1.180 = ± 0.015"	PART NO.		
1	BODY	BRASS	GOLD	1	1.180 – 4.724 = ± 0.020"	262136		
	DESCRIPTION	MATERIAL	FINISH	QTY	DO NOT SCALE DRAWING	CAD FILE	DWG. NO.	REV. A
						C:/262/262136.DWG	262136.DWG	SIZE A
								SCALE NA

Amphenol Connex

Mouser Electronics

Authorized Distributor

Click to View Pricing, Inventory, Delivery & Lifecycle Information:

[Amphenol:](#)

[262136](#)