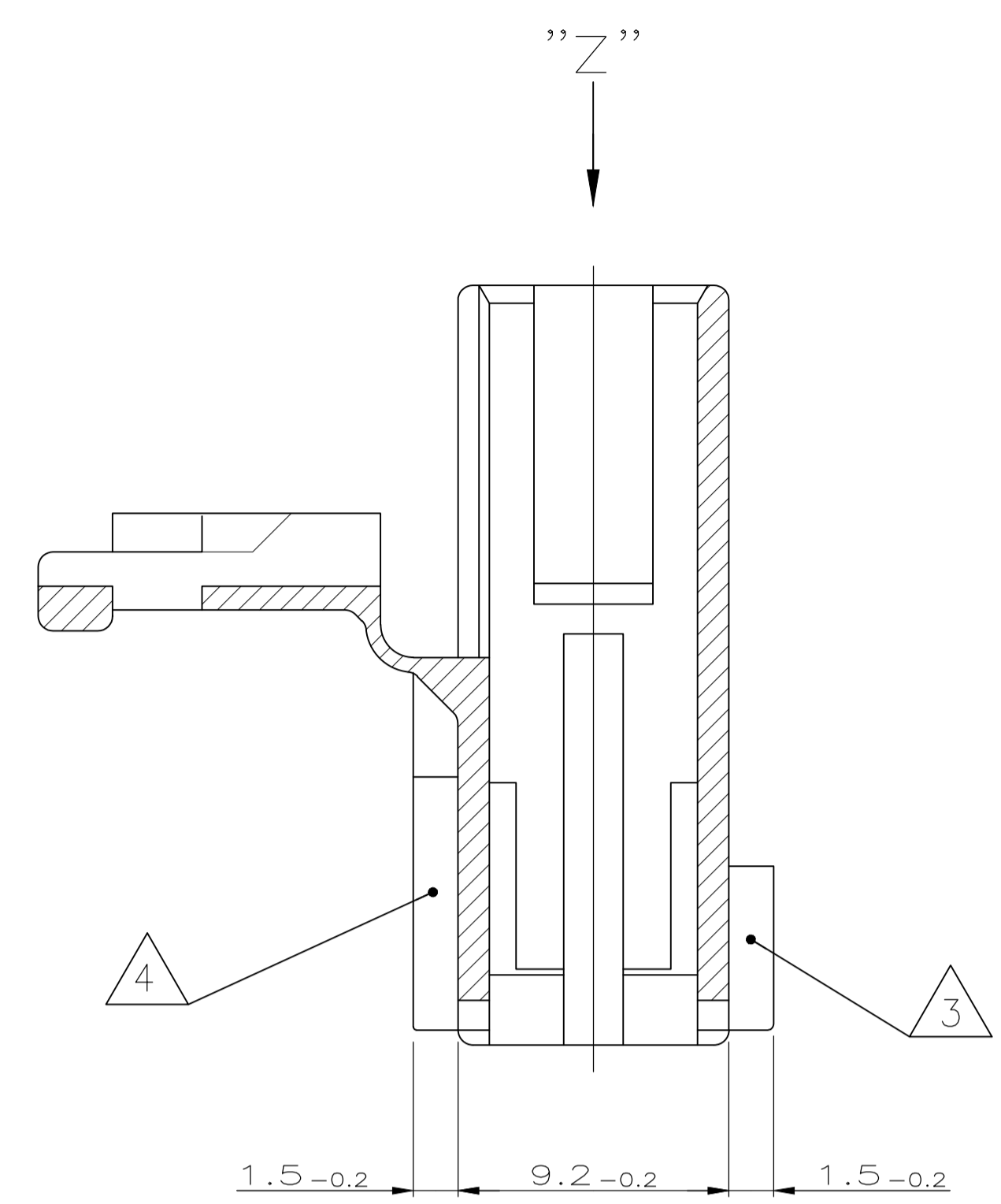
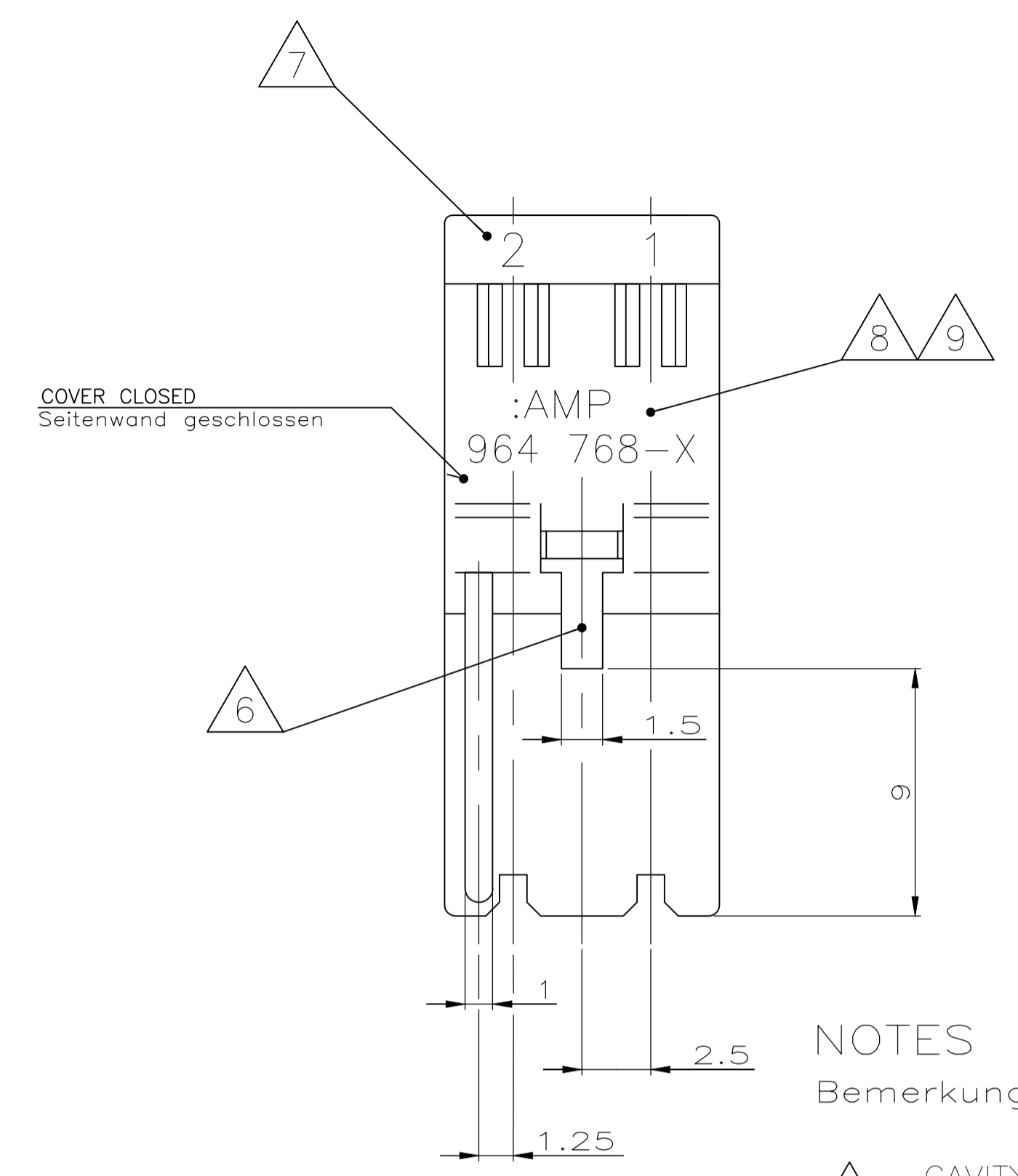
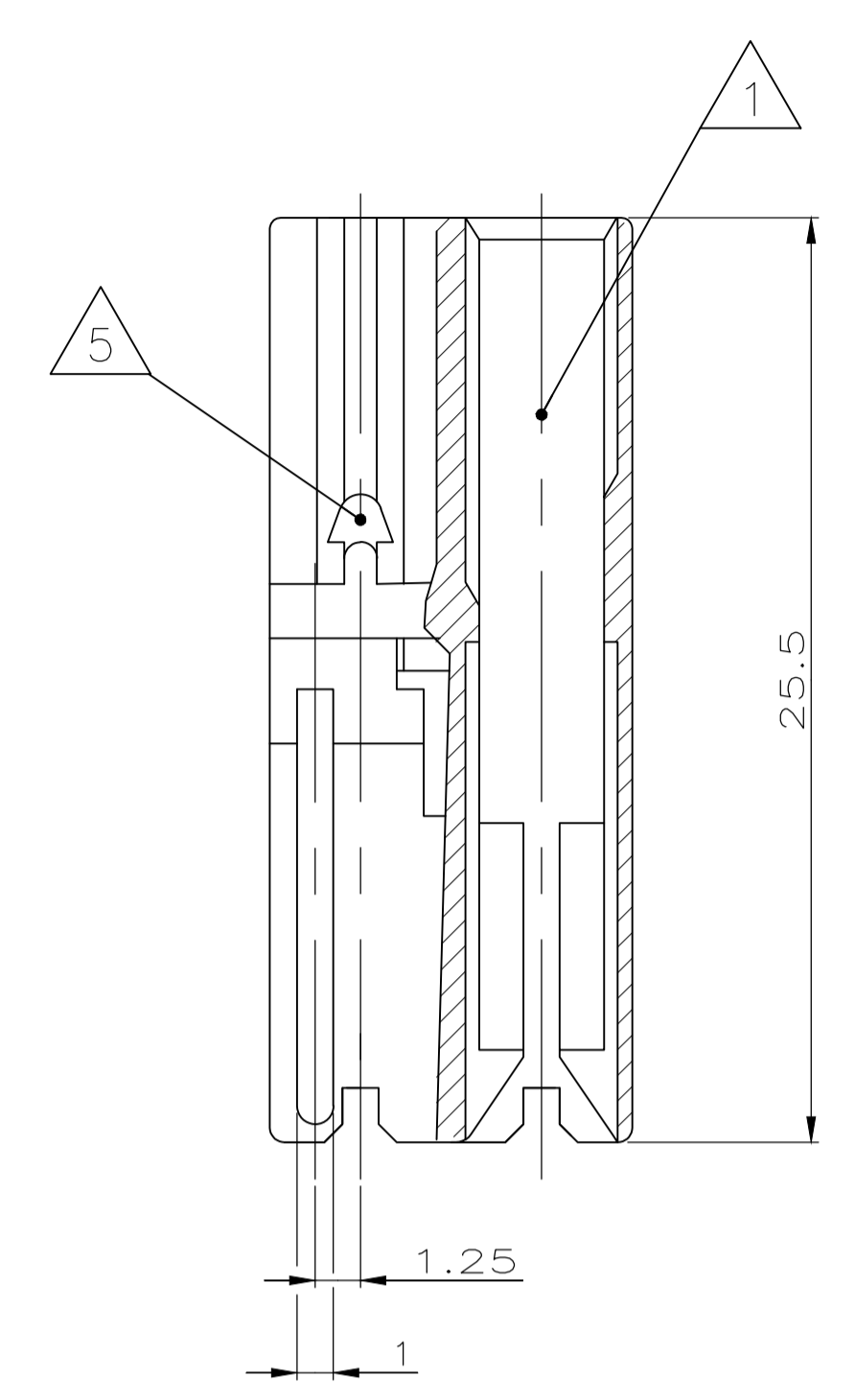


REVISIONS				
P	LTR	DESCRIPTION	DATE	DMN / APVD
C8	ECR-20-001343		13FEB2020	DC / FL

NUMBER 964768
 VERWENDET FÜR
 PASSEND ZU
 PART NR. 94-52864-1



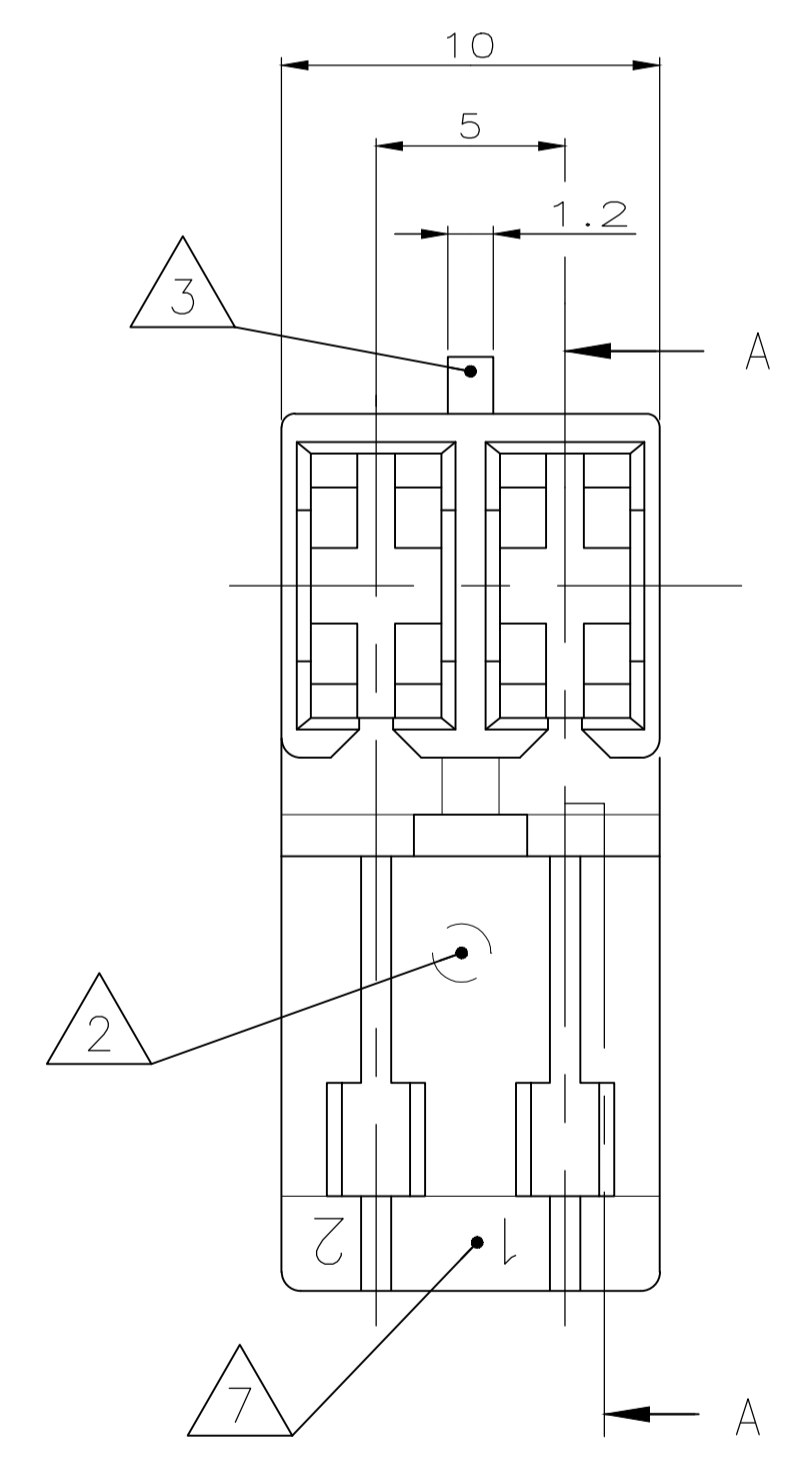
SECTION A-A (TURNED AT 90°)
 Schnitt A-A (um 90° gedreht)



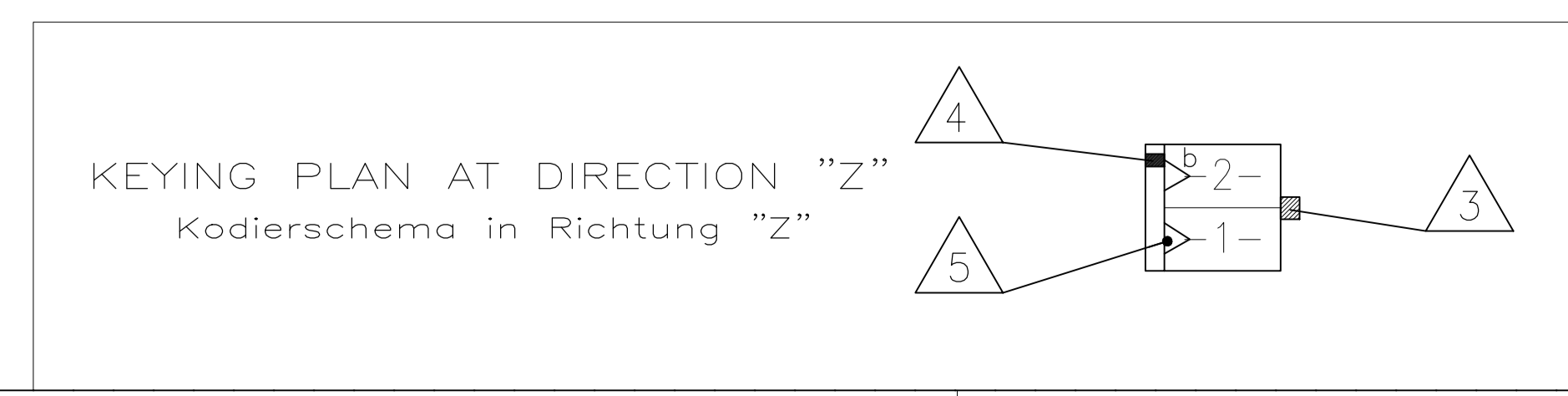
NOTES

Bemerkungen

- 1 CAVITY SUITABLE TO AMP TIMER-CONTACTS:
Kammer geeignet für AMP Timer-Kontakte: PN 926965/926973/926005/926006/927833/927837
- 2 CAVITY MARKING
Nestmarkierung
- 3 SPECIAL KEYING BETWEEN CAVITY NO. 1 AND 2
Sonderkodierung zwischen Kammer Nr. 1 und 2
- 4 POLARIZATION RIB GO THROUGH TO HINGE
Polarisierungsrippe durchgehend bis Scharnier
- 5 LOCKING DEVICE FOR COVER AT CAVITY NO. 1 AND 2
Verrastung für Deckel bei Kammer No. 1 und 2
- 6 MATING STOP BETWEEN CAVITY NO. 1 AND 2
Tiefenanschlag zwischen Kammer Nr. 1 und 2
- 7 CONTACT CAVITY NO.
Kammernummer
- 8 AMP LOGO AND PART NUMBER
AMP Logo und Bestellnummer
- 9 PN 964768-1 WILL BE ALSO DELIVERED WITH THE INSCRIPTION 964768-2
PN 964768-1 wird auch mit der Aufschrift 964768-2 geliefert
- 10 LOOSE PARTS PACKED IN PE-BAG
Verpackung, lose im PE-Beutel
- 11 TYCO-LOGO AND PART NUMBER
tyco-Logo und Bestellnummer
- 12 PN 964768-1 IS ALSO MANUFACTURED WITH THE PN-INSERTION 964768-2
PN 964768-1 wird mit dem PN-Stempel 964768-2 gefertigt
- 13 MATERIAL CORRESPONDS TO REQUIREMENT EN 60335
(INCL. GLOW WIRE TEST 750°C, NO FLAME)
Material entspricht den Anforderungen der EN 60335
(incl. glow wire test 750°C, ohne Flamme)
- 14 MATERIAL GRADE IS V0 & GWT 750°C, NO FLAME
- 15 PRELIMINARY - NOT RELEASED FOR PRODUCTION



DOUBLE SOURCE RESIN: TWO MATERIALS FROM DIFFERENT SUPPLIERS CAN BE USED TO PRODUCE THIS PART.



1-964768-2	1	2 POS. STANDARD TIMER HSG.		PA66	BLUE
1-964 768-1	C	2 POS. STANDARD TIMER HSG.		PA66	NATURE
0-964 768-4	C	2 POS. STANDARD TIMER HSG.		PA 6	BLACK
0-964 768-3	C	2 POS. STANDARD TIMER HSG.		PA 6	NATURE
0-964 768-2	C	2 POS. STANDARD TIMER HSG.		PA6.6	GREY
0-964 768-1	C	2 POS. STANDARD TIMER HSG.		PA6.6	NATURE
BESTELL-NR.	REV	BENENNUNG EINZELTEIL	BEMERKUNG	WERKSTOFF	OBERFLÄCHE FARBE

THIS DRAWING IS A CONTROLLED DOCUMENT.		DMN ATZMANN 20.3.95	TE Connectivity	
DIMENSIONS: mm		CHK BARTOSCH 20.3.95		
TOLERANCES UNLESS OTHERWISE SPECIFIED:		APVD	NAME	
0 PLC ± -	1 PLC ± -		2POS. STANDARD-TIMER HSG. (SPEZIAL)	
2 PLC ± 0.2mm	3 PLC ± -		2pol. Standard-Timer Geh. (Spezial)	
4 PLC ± -	ANGLES ± -		SIZE: A1	
MATERIAL SEE TABLE	FINISH -	WEIGHT -	CAGE CODE 00779	DRAWING NO. 964768
		CUSTOMER DRAWING	SCALE 5:1	SHEET 1 OF 1