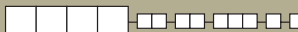









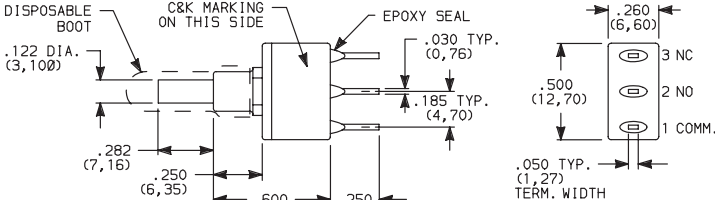
E020 Series Sealed Snap-acting Momentary Pushbutton Switches

SWITCH FUNCTION



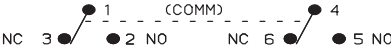
NO. POLES	MODEL NO.	SWITCH FUNCTION		CONNECTED TERMINALS		SCHEMATIC
		POS. 1	POS. 2	POS. 1	POS. 2	
						
		C&K marking this side		C&K marking this side		
SP	E121	ON	MOM.	1-3	1-2	
	E125	ON	MOM.			
SPDT						

SPDT

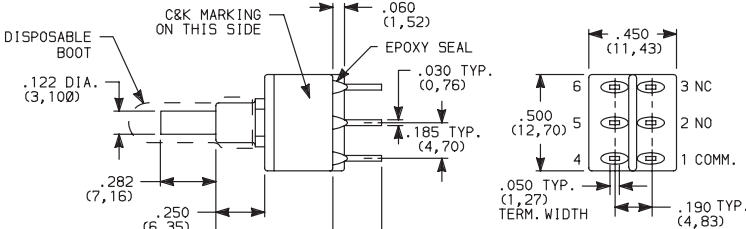


DISPOSABLE BOOT
.122 DIA. (3, 100)
.282 (7, 16)
.250 (6, 35)
.600 (15, 24)
.250 (6, 35)
C&K MARKING ON THIS SIDE
EPOXY SEAL
.030 TYP. (0, 76)
.185 TYP. (4, 70)
.260 (6, 60)
.500 (12, 70)
.050 TYP. (1, 27)
TERM. WIDTH

Terminal Nos.
For Reference Only

DP	E221	ON	MOM.	1-3,4-6	1-2,4-5	
	E225	ON	MOM.			
DPDT						

DPDT



DISPOSABLE BOOT
.122 DIA. (3, 100)
.282 (7, 16)
.250 (6, 35)
.600 (15, 24)
.250 (6, 35)
C&K MARKING ON THIS SIDE
EPOXY SEAL
.030 TYP. (0, 76)
.185 TYP. (4, 70)
.060 (1, 52)
.450 (11, 43)
.500 (12, 70)
.050 TYP. (1, 27)
TERM. WIDTH
.190 TYP. (4, 83)

Terminal Nos.
For Reference Only

MOM. = Momentary

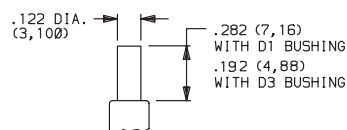
E121, E221 models with all options when ordered with G or R contact material.

EX25 models must be ordered with B or P contact material.
EX21 models must be ordered with G or R contact material.

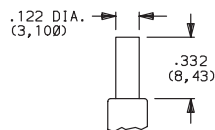
PLUNGER



S .282" HIGH

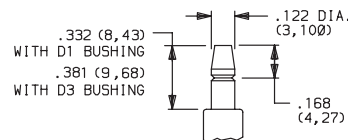


S1 .332" HIGH



Not Available with D1 bushing.

M .332" HIGH SNAP-FITTING

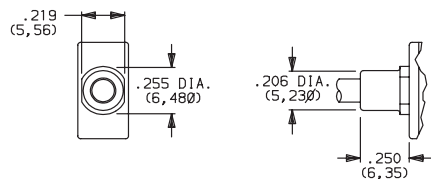


NOTE: Caps available for all plunger options, see page A-27.

BUSHING

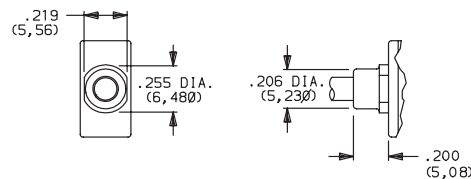


D1 UNTHREADED

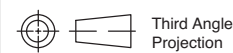


Not available with S1 actuator.

D3 .180" HIGH UNTHREADED



NOTE: Disposable splashproof vinyl over actuator and bushing supplied std., see page A-26.



Dimensions are shown: Inches (mm)
Specifications and dimensions subject to change

C&K

E020 Series Sealed Snap-acting Momentary Pushbutton Switches

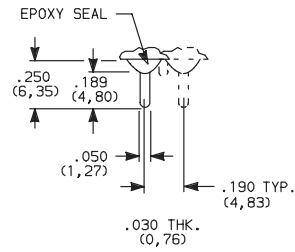


A
Pushbutton

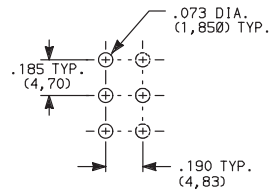
TERMINATIONS



C PC THRU-HOLE

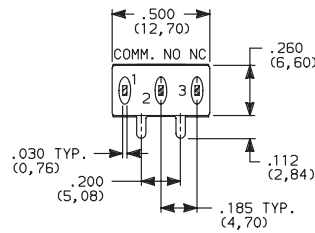
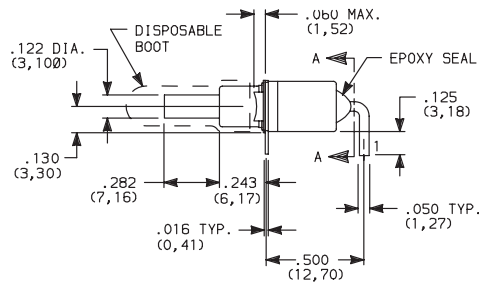
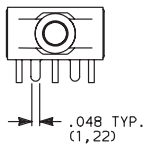


PC MOUNTING

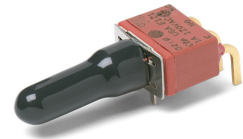


SPDT and DPDT

A RIGHT ANGLE, PC THRU-HOLE

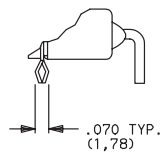
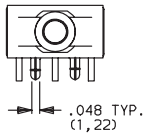


SECTION A-A

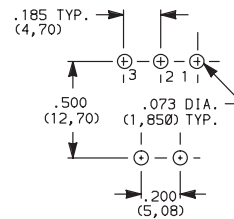


E121SD1AGE
SPDT

A3 RIGHT ANGLE, SNAP-IN, PC THRU-HOLE

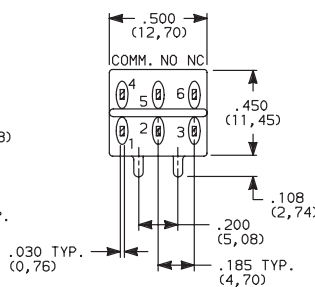
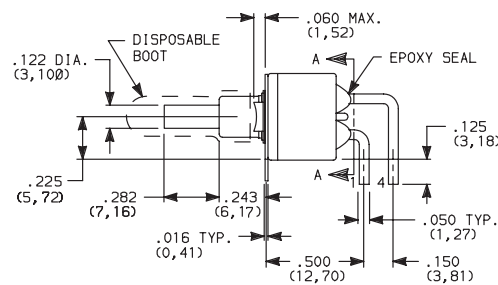
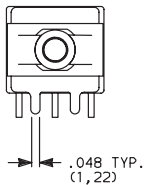


PC MOUNTING

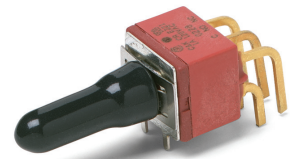


NOTE: Terminal bend radii and lead-in manufacturing option.

A RIGHT ANGLE, PC THRU-HOLE

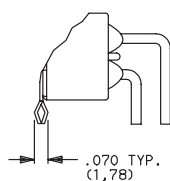
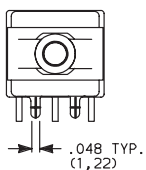


SECTION A-A

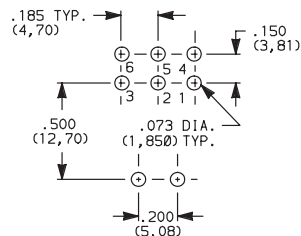


E221SD1AGE
DPDT

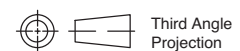
A3 RIGHT ANGLE, SNAP-IN, PC THRU-HOLE



PC MOUNTING



NOTE: Terminal bend radii and lead-in manufacturing option.



C&K

Dimensions are shown: Inches (mm)
Specifications and dimensions subject to change

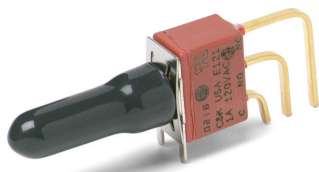


E020 Series Sealed Snap-acting Momentary Pushbutton Switches

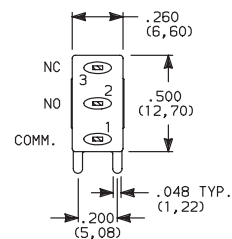
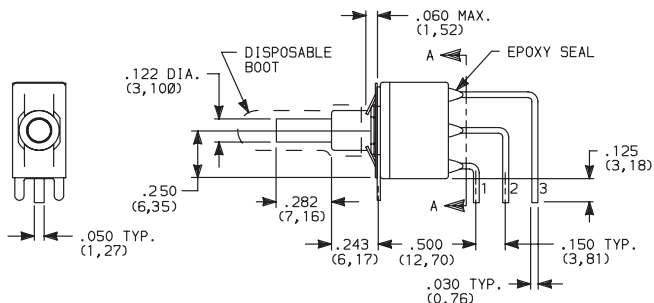
TERMINATIONS



AV2 VERTICAL RIGHT ANGLE, PC THRU-HOLE,
.150" PITCH

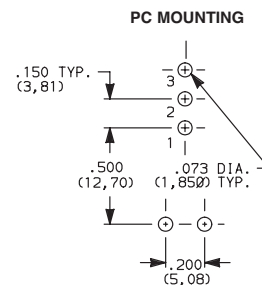
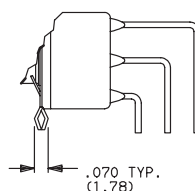
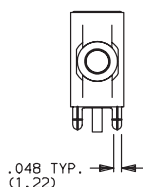


**E121SD1AV2GE
SPDT**



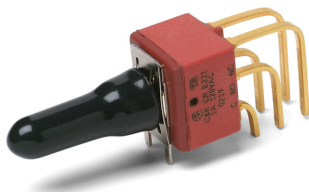
SECTION A-A

AV3 VERTICAL RIGHT ANGLE, SNAP-IN, PC THRU-HOLE,
.150" PITCH

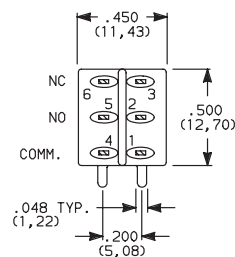
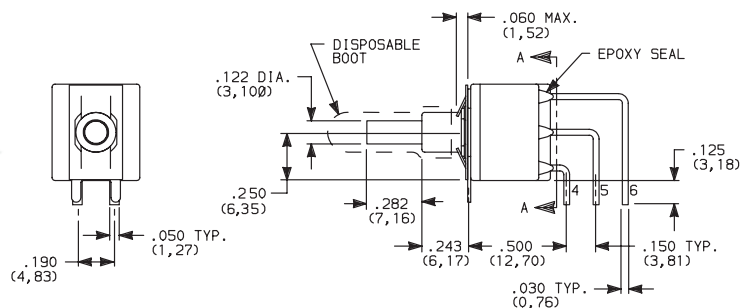


NOTE: Terminal bend radii and lead-in manufacturing option.

AV2 VERTICAL RIGHT ANGLE, PC THRU-HOLE,
.150" PITCH

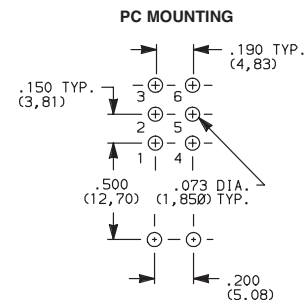
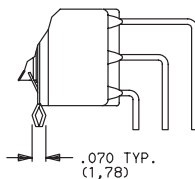
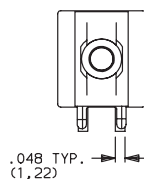


**E221SD1AV2GE
DPDT**

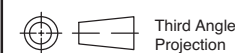


SECTION A-A

AV3 VERTICAL RIGHT ANGLE, SNAP-IN, PC THRU-HOLE,
.150" PITCH



NOTE: Terminal bend radii and lead-in manufacturing option.



Third Angle
Projection

E020 Series Sealed Snap-acting Momentary Pushbutton Switches

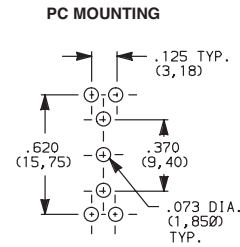
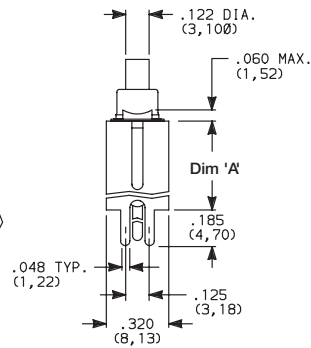
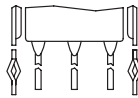
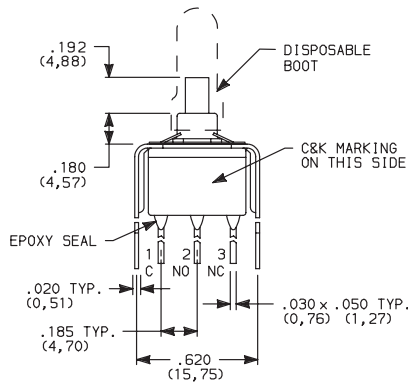
TERMINATIONS



A
Pushbutton

V3, V4 VERTICAL MOUNT, V-BRACKET

V31, V41 VERTICAL MOUNT, V-BRACKET, SNAP-IN

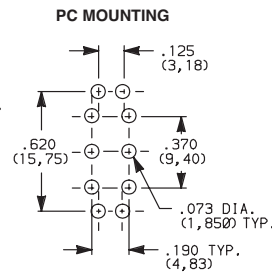
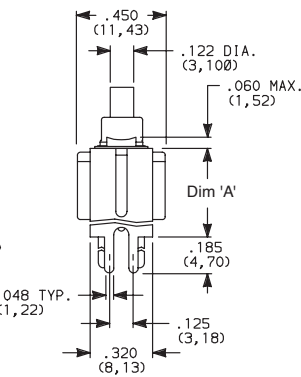
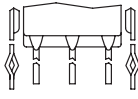
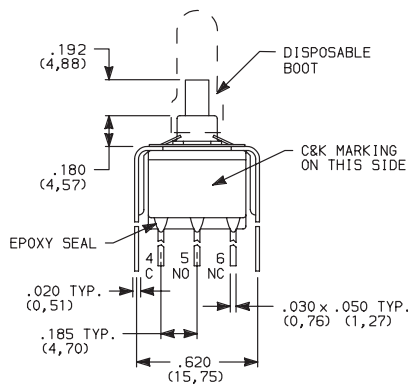


E121SD3_GE
SPDT

OPTION CODE	DIM 'A'
V3, V31	.460 (11,68)
V4, V41	.630 (16,00)

V3, V4 VERTICAL MOUNT, V-BRACKET

V31, V41 VERTICAL MOUNT, V-BRACKET, SNAP-IN

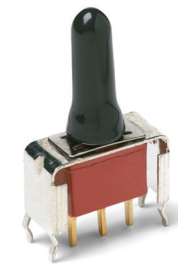
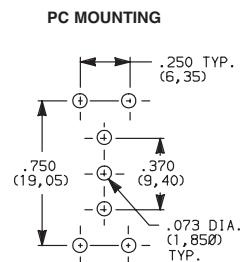
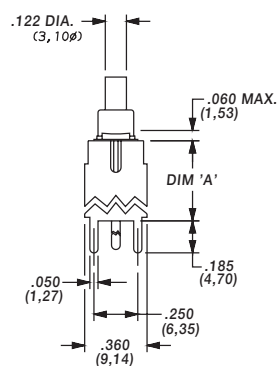
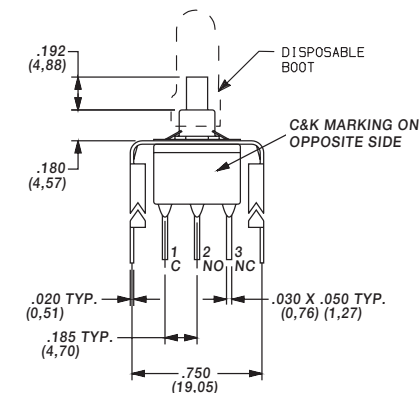


E221SD3_GE
DPDT

OPTION CODE	DIM 'A'
V3, V31	.460 (11,68)
V4, V41	.630 (16,00)

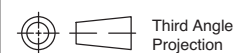
V6, V8 VERTICAL MOUNT, V-BRACKET

V61, V81 VERTICAL MOUNT, V-BRACKET, SNAP-IN



E121SD3_GE
SPDT

OPTION CODE	DIM 'A'
V6, V61	.460 (11,68)
V8, V81	.953 (24,21)



C&K

Dimensions are shown: Inches (mm)
Specifications and dimensions subject to change



E020 Series Sealed Snap-acting Momentary Pushbutton Switches

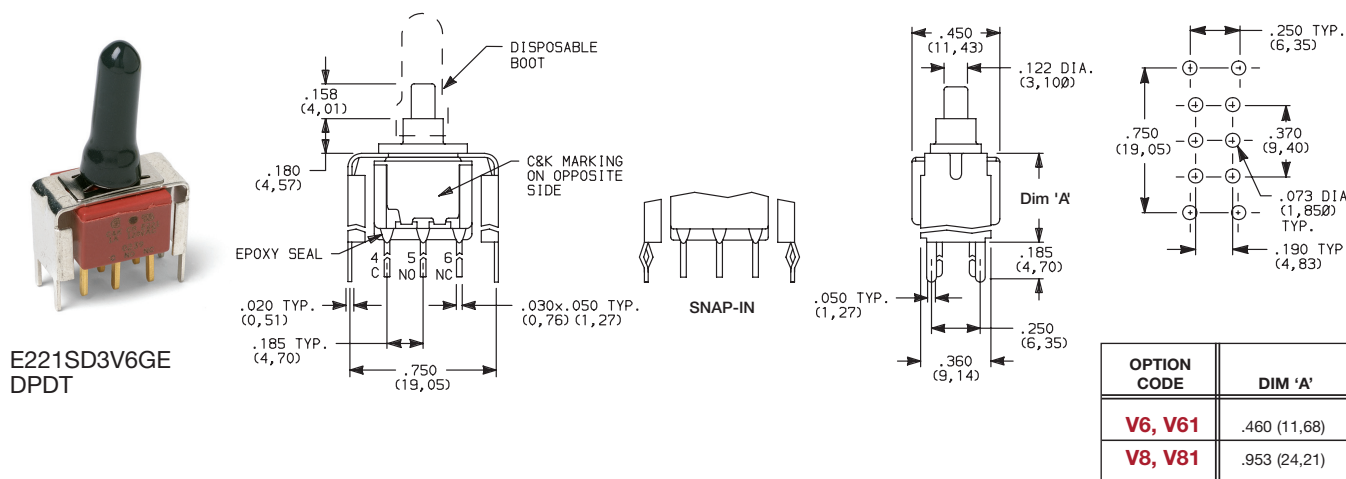
TERMINATIONS



V6, V8 VERTICAL MOUNT, V-BRACKET

V61, V81 VERTICAL MOUNT, V-BRACKET, SNAP-IN

PC MOUNTING



CONTACT MATERIAL



OPTION CODE	CONTACT MATERIAL	TERMINAL PLATING	RATINGS	
B	GOLD ¹	GOLD ¹	LOW LEVEL/DRY CIRCUIT	EX25 MODELS ONLY: 0.4 VA MAX. @ 20 V AC OR DC MAX.
P		MATTE-TIN ⁴		
G	GOLD OVER SILVER ^{2,3}	GOLD ³	LOW LEVEL/DRY CIRCUIT OR POWER	EX21 MODELS ONLY: 0.4 VA MAX @ 20 V AC OR DC MAX. OR 1 AMP @ 120 V AC OR 28 V DC.
R		MATTE-TIN ⁴		

* Note: See Technical Data section of this catalog for RoHS compliant and compatible definitions and specifications.


¹ CONTACTS & TERMINALS: Copper alloy, with gold plate over nickel plate.

² N.O. AND N.C. CONTACTS: Coin silver, with gold plate over nickel plate.

³ COMMON CONTACTS & ALL TERMINALS: Copper alloy, with gold plate over nickel plate.

⁴ TERMINALS: Copper alloy, with matte-tin alloy over nickel plate.

NOTE: Any models supplied with P, R, B or G contact material are RoHS compliant.

E121, E221 models  with all options when ordered with mandatory G, or R contact material.

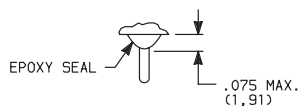
P or B contact material must be ordered with EX25 models.

R or G contact material must be ordered with EX21 models.

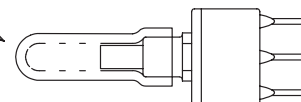
SEAL



E EPOXY SEAL AND DISPOSABLE SPLASHPROOF BOOT



Disposable splashproof boot supplied standard. Remove and discard boot *only after* soldering and cleaning processes are complete.



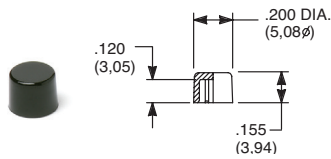
E020 Series Sealed Snap-acting Momentary Pushbutton Switches



A
Pushbutton

AVAILABLE HARDWARE

Cap

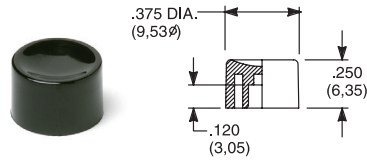


PART NO.

708901000 WHITE
708902000 BLACK
708903000 RED

Material: Nylon
Finish: Gloss

Cap

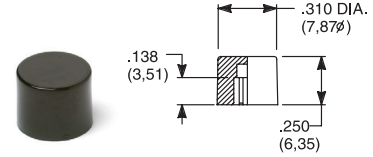


PART NO.

752701000 WHITE
752702000 BLACK
752703000 RED

Material: Nylon
Finish: Gloss

Cap

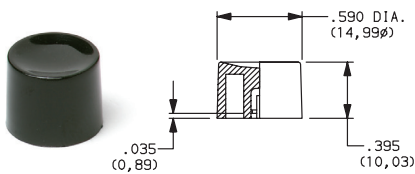


PART NO.

801801000 WHITE
801802000 BLACK
801803000 RED

Material: Nylon
Finish: Gloss

Cap, Snap-fitting plunger

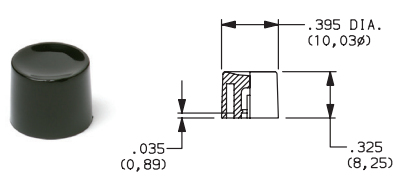


PART NO.

452D01000 WHITE
452D02000 BLACK
452D03000 RED

Material: Nylon
Finish: Gloss

Cap, Snap-fitting plunger

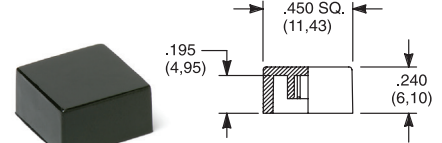


PART NO.

894101000 WHITE
894102000 BLACK
894103000 RED

Material: Nylon
Finish: Gloss

Cap



PART NO.

484601000 WHITE
484602000 BLACK
484603000 RED

Material: Nylon
Finish: Gloss

PART NO.

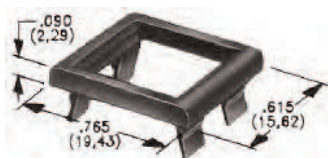
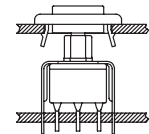
798201000 WHITE
798202263 BLACK
798203000 RED

Material: Nylon
Finish: Matte

NOTE: Other cap colors available, consult Customer Service Center.

Frames snap into panel opening and are independent from switch mounting. Accurate positioning of the PC mounted switch relative to the panel opening is necessary to provide proper clearance between actuator and frame. Available in two basic styles and four panel thicknesses .047-.125 in. Material: Nylon. Finish: Matte.

TYPICAL APPLICATION



.090" (2,29) PANEL THK. .125" (3,18) PANEL THK.

PART NO.

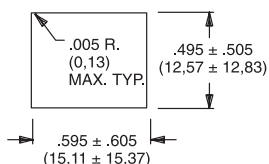
432702263

PART NO.

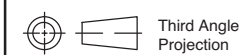
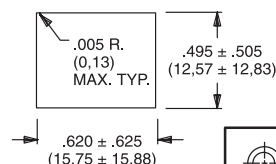
432802263 BLACK

PANEL MOUNTING

For part numbers
4325xxxxx, 4326xxxxx



For part numbers
4327xxxxx, 4328xxxxx



Dimensions are shown: Inches (mm)
Specifications and dimensions subject to change





A

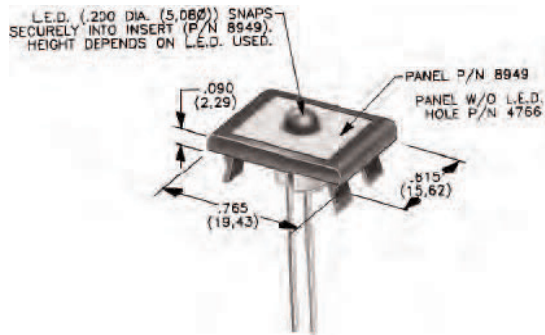
Pushbutton

E020 Series Sealed Snap-acting Momentary Pushbutton Switches

AVAILABLE HARDWARE

PANEL INSERTS

Above frames (part nos. 432XXXXXX) are also available with insert which accepts LED for indicator light assembly. Order insert separately from frame. Blank insert panel (without hole for LED) also available. LED not included.



PANEL INSERT
WITH HOLE FOR LED

PART NO.
894902000

BLANK PANEL INSERT
WITHOUT HOLE FOR LED

PART NO.
476602000 BLACK

Special colors, custom markings available, consult Customer Service Center.

Mouser Electronics

Authorized Distributor

Click to View Pricing, Inventory, Delivery & Lifecycle Information:

C&K Switches:

[E221SD1CGE](#) [E121SD1CGE](#) [E121SD1AV2GE](#) [E121SD1AGE](#) [E121SD1V3GE](#) [E125SD1AV2BE](#) [E125SD1ABE](#)
[E125SD1V3BE](#) [E121MD1AV3GE](#) [E121SD1AV3GE](#) [E125SD1CBE](#) [E125SD1V6BE](#) [E221SD1AV2GE](#) [E225SD1CBE](#)
[E221SD1AGE](#) [E121SD3V3GE](#) [E125SD1A3BE](#) [E121SD3V6GE](#) [E121SD3V31GE](#) [E121SD1A3LE](#) [E121SD1A3RE](#)
[E221SD1V4LE](#) [E121SD1V61GE](#) [E125SD1V31BE](#) [E125SD3V3BE](#) [E121SD3V61GE](#) [E125SD1AKE](#) [E225MD1V3BE](#)
[E121SD1AV3LE](#) [E121MD1AV2GE](#) [E125SD3V3KE](#) [E225SD1V3BE](#) [E221SD1AV3LE](#) [E225SD1ABE](#) [E221SD1CLE](#)
[E121S1D3AV3GE](#) [E121SD3V4GE](#) [E221SD3V6GE](#) [E121SD1A3GE](#) [E125SD1AV3BE](#) [E121SD1V3LE](#) [E225SD3CBE](#)
[E121SD1V6GE](#) [E125S1D3A3BE](#) [E125SD3V3PE](#) [E125SD1V8KE](#) [E125MD1CBE](#)