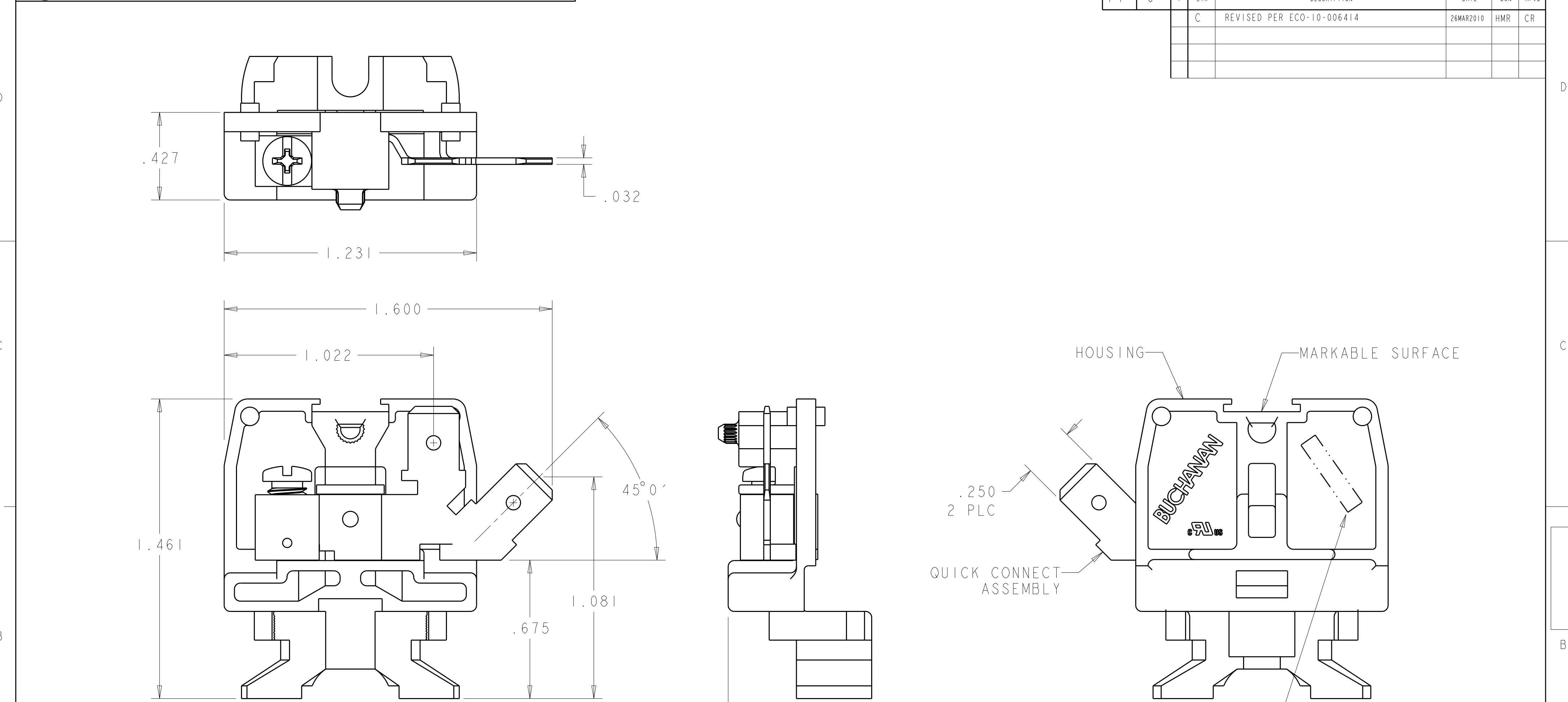


P	LTR	DESCRIPTION	DATE	DWN	APVD
	C	REVISED PER ECO-10-006414	26MAR2010	HMR	CR



1. PHYSICAL PROPERTIES
HOUSING: POLYESTER, UL 94V-0 RATED, COLOR: GRAY.
QUICK CONNECT ASSEMBLY
QUICK CONNECT: COPPER ALLOY, TIN PLATED.
SCREW: STEEL, ZINC PLATED CLEAR CHROMATE.
TUBULAR CONTACT: COPPER ALLOY, ZINC PLATED
2. MECHANICAL
PITCH: .375
MOUNTING: STANDARD CHANNEL AND CLAMP.
OPERATING TEMPERATURE: 150°C MAX.
TORQUE: RECOMMENDED TIGHTENING TORQUE IS 10 IN-LBS.
3. ELECTRICAL
MAXIMUM CURRENT: 20A
OPERATING VOLTAGE: 300 V
WIRE RANGE: 12-18 AWG.

AMP 1471-9 REV 31MAR2000

Pro/ENGINEER DRAWING

1546152-1
PART
NUMBER

THIS DRAWING IS A CONTROLLED DOCUMENT FOR TYCO ELECTRONICS CORPORATION IT IS SUBJECT TO CHANGE AND THE CONTROLLING ENGINEERING ORGANIZATION SHOULD BE CONTACTED FOR THE LATEST REVISION.		DWN S. WELDON 18JUN2002	Tyco Electronics Harrisburg, PA 17105-3608	
DIMENSIONS: INCHES		CHK S. YODER 18JUN2002	NAME ASSEMBLY, TERMINAL BLOCK, NEMA, DOVETAIL BASE, MEDIUM DUTY, TUBULAR QUICK CONNECT	
TOLERANCES UNLESS OTHERWISE SPECIFIED:		APVD S. YODER 18JUN2002	SIZE A2	
0 PLC ± 1 PLC ± 2 PLC ± 3 PLC ±.005 4 PLC ± ANGLES ± FINISH		PRODUCT SPEC - APPLICATION SPEC - WEIGHT -	CAGE CODE 00779	DRAWING NO 1546152
MATERIAL		RESTRICTED TO -		
CUSTOMER DRAWING		SCALE 3:1 SHEET 1 OF 1 REV C		

Mouser Electronics

Authorized Distributor

Click to View Pricing, Inventory, Delivery & Lifecycle Information:

[TE Connectivity:](#)

[1546152-1](#)