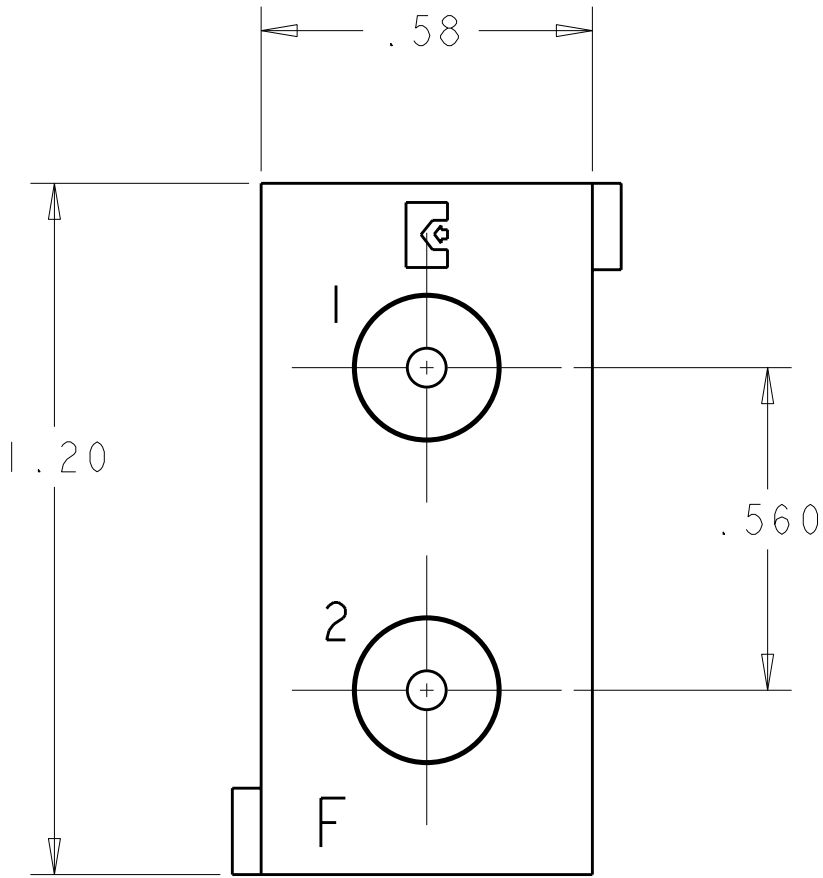


LOC	DIST	REVISIONS					
GP	00	P	LTR	DESCRIPTION	DATE	DWN	APVD
			A	RELEASED	19MAR2008	RG	DO



1. PART NUMBER CHANGES AND/OR DESIGN CHANGES AFFECTING ITEM INTERCHANGEABILITY REQUIRES PRIOR TYCO ELECTRONICS APPROVAL AND AUTHORIZATION BY REVISION TO THIS DRAWING.
2. ITEMS PROVIDED TO THIS SPECIFICATION TO BE PERMANENTLY IDENTIFIED ON THE CONTAINER PER THE FOLLOWING IDENTIFIER:

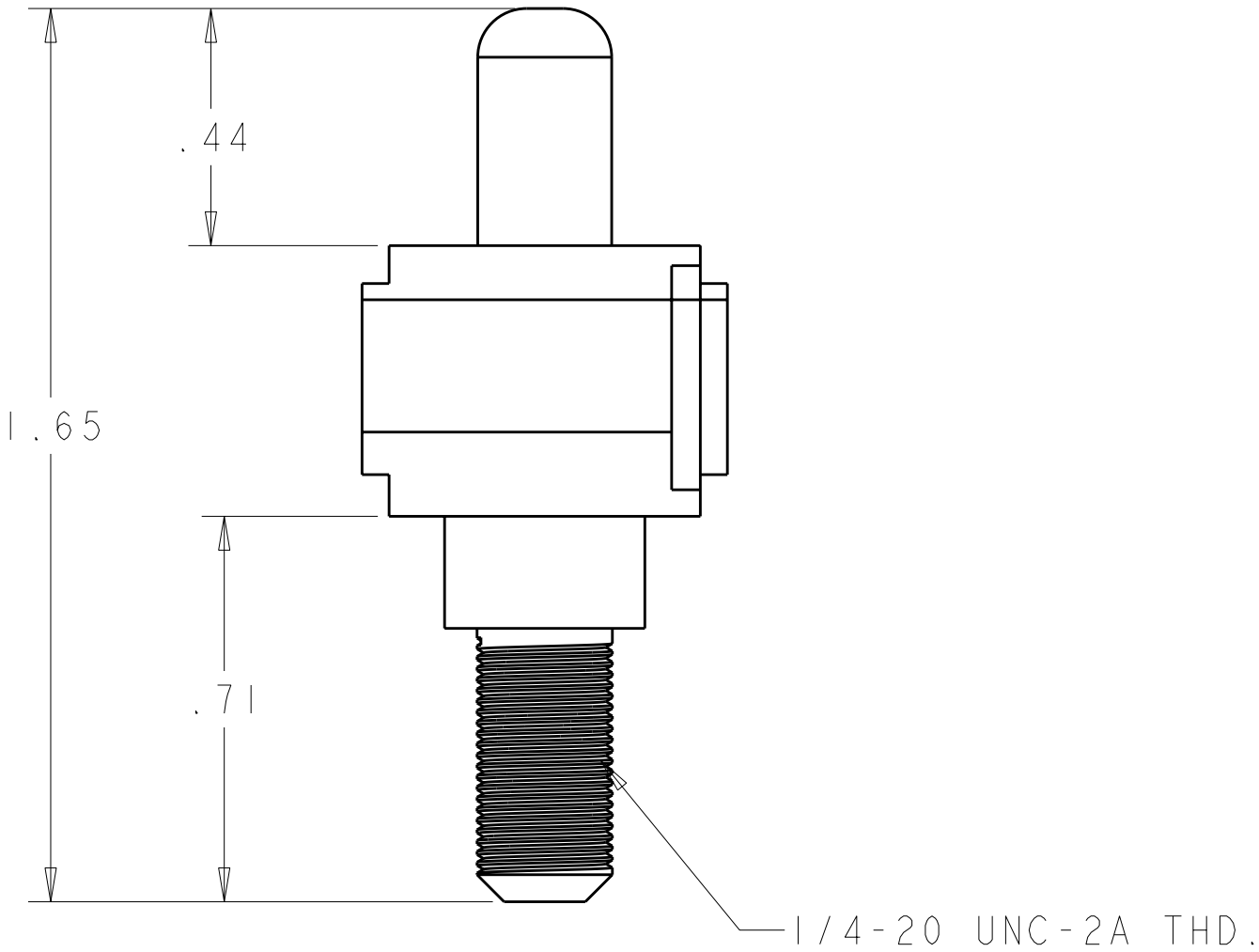
YEAR 11 WEEK

TYCO ELECTRONICS P/N

XXXXXXXX-X

DATE CODE (eg. 0216)

XXXX



AS SHOWN	6648487-1
DESCRIPTION	PART NUMBER

ELCON

DOMINO

AMP 1471-9 REV 31MAR2000

Pro/ENGINEER DRAWING

THIS DRAWING IS A CONTROLLED DOCUMENT FOR TYCO ELECTRONICS CORPORATION. IT IS SUBJECT TO CHANGE AND THE CONTROLLING ENGINEERING ORGANIZATION SHOULD BE CONTACTED FOR THE LATEST REVISION.		DWN R. GRZYBOWSKI 19MAR2008	Tyco Electronics Harrisburg, PA 17105-3608			
DIMENSIONS: INCHES		CHK D. ORRIS 19MAR2008	NAME F MODULE PIN ASSEMBLY HOUSING DOMINO			
TOLERANCES UNLESS OTHERWISE SPECIFIED: <div>0 PLC ± 1 PLC ± 2 PLC ±.02 3 PLC ±.010 4 PLC ± ANGLES ± FINISH</div>		APVD S. FLICKINGER 19MAR2008				
MATERIAL		PRODUCT SPEC -	APPLICATION SPEC -		SIZE A200779	CAGE CODE C-6648487
		WEIGHT -	CUSTOMER DRAWING		SCALE 3:1	SHEET 1 OF 1
				REV A		

Mouser Electronics

Authorized Distributor

Click to View Pricing, Inventory, Delivery & Lifecycle Information:

[TE Connectivity:](#)

[6648487-1](#)