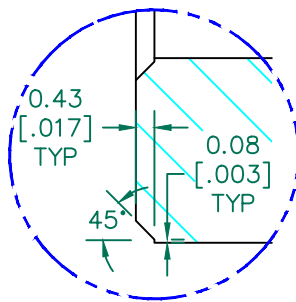


SEE DETAIL "A"  
SECTION A-A



DETAIL "A"  
SCALE 5:1

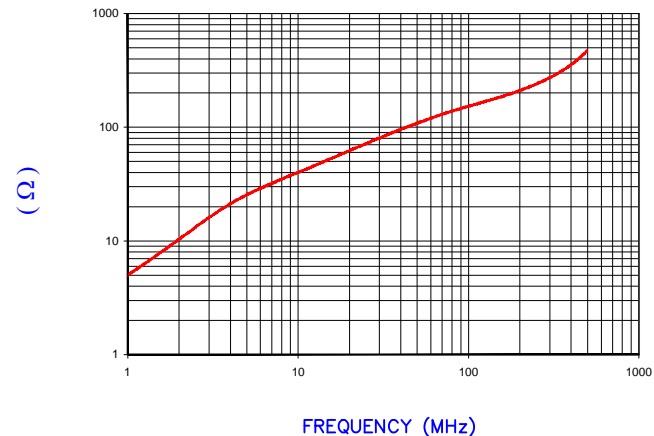
**UNCONTROLLED DOCUMENT**

NOTES: UNLESS OTHERWISE SPECIFIED

1. COSMETIC SPECIFICATION REFER TO WI-QA-038.

IMPEDANCE ( Z )			
Frequency	25 MHz	100 MHz	300 MHz
Nominal (REF)	73 Ω	150 Ω	270 Ω
Minimum	- Ω	120 Ω	- Ω

Z vs. FREQUENCY  
(REF. ONLY)

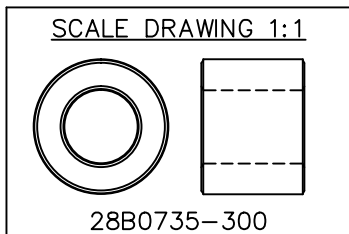


AGILENT E4991A Impedance/Material Analyzer  
HP 16092A Test Fixture

CORE DIMENSIONS: mm[INCHES]

A	18.67 [.735]	±	0.36 [.014]
B	10.16 [.400]	±	0.20 [.008]
C	14.27 [.562]	±	0.25 [.010]

WEIGHT/1000 13.5 kgs 29.7 lbs



DIMENSIONS ARE IN MM [INCHES].				This print is the property of Laird Tech. and is loaned in confidence subject to return upon request and with the understanding that no copies shall be made without the written consent of Laird Tech. All rights to design or invention are reserved.		<b>Laird</b>	
E	UPDATE THE LOGO	05/13/15	QIU	PROJECT/PART NUMBER:		REV	DRAWN BY:
D	UPDATE COMPANY LOGO	12/28/12	QIU	28B0735-300		E	JRK
C	UPDATE PRINT FORMAT ADD CURVE	06/12/03	JRK	DATE:	01/10/91	SCALE:	2 : 1
B	UPDATED P/N FOR NEW CATALOG	10/30/95	JBE	CAD #	28B0735-300-E	TOOL #	B0735
A	ORIGINAL DRAFT	1/10/91	DJB			MATERIAL:	
REV	DESCRIPTION	DATE	INT			FERRITE	

# Mouser Electronics

Authorized Distributor

Click to View Pricing, Inventory, Delivery & Lifecycle Information:

Laird:

[28B0735-300](#)