

4

3

2

1

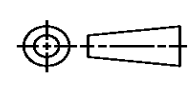
THIS DRAWING IS UNPUBLISHED. RELEASED FOR PUBLICATION
 © COPYRIGHT ALL RIGHTS RESERVED.

LOC	DIST	REVISIONS			
P	LTR	DESCRIPTION	DATE	DWN	APVD
	B1	ECR-16-009820	18JUL2016	GK	SD

REPLACED BY OCEAN STYLE APPLICATOR PART NUMBER 2151180-1

FOR REPLACEMENT PARTS FOR APPLICATOR 1528922
 REFER TO ADDITIONAL PAGE(S). SPARE PARTS KIT (IF LISTED)
 WILL REMAIN AVAILABLE.

THE REPLACEMENT OCEAN STYLE APPLICATOR HAS THE
 SAME TERMINATOR/PRESS INTERFACE AS APPLICATOR
 1528922

THIS DRAWING IS A CONTROLLED DOCUMENT.		DWN	GOPALAKRISHNA HV		
DIMENSIONS:		CHK	GOPALAKRISHNA HV		
		TOLERANCES UNLESS OTHERWISE SPECIFIED:		APVD	
		0 PLC	±	STOUGH DALE	
		1 PLC	±	PRODUCT SPEC	
		2 PLC	±	APPLICATION SPEC	
MATERIAL		FINISH		SIZE	CAGE CODE
				A3	
				DRAWING NO	
				C- 1528922	
				RESTRICTED TO	
				SCALE	SHEET 1 OF 2
				REV B1	

A

A

D

D

C

C

B

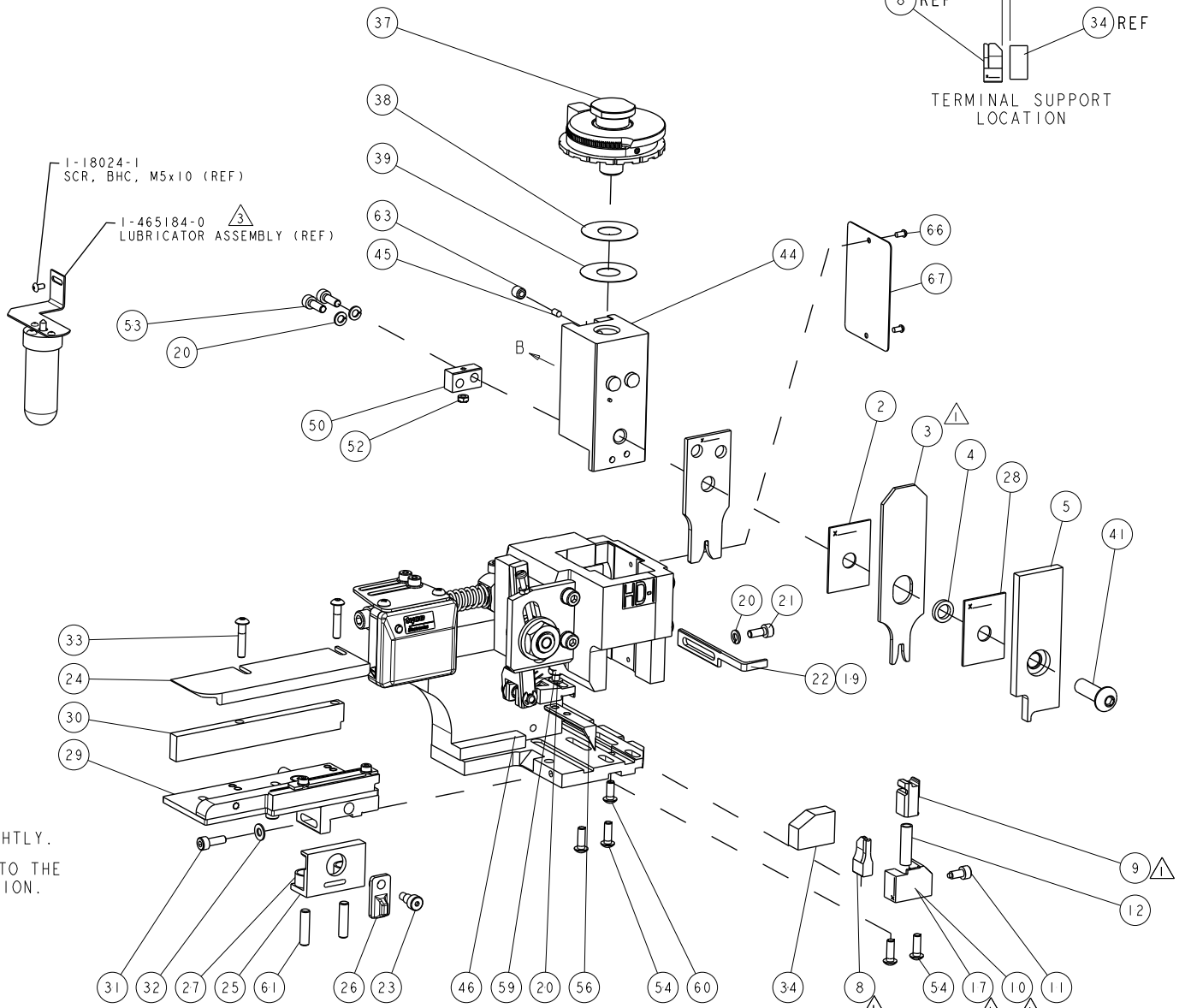
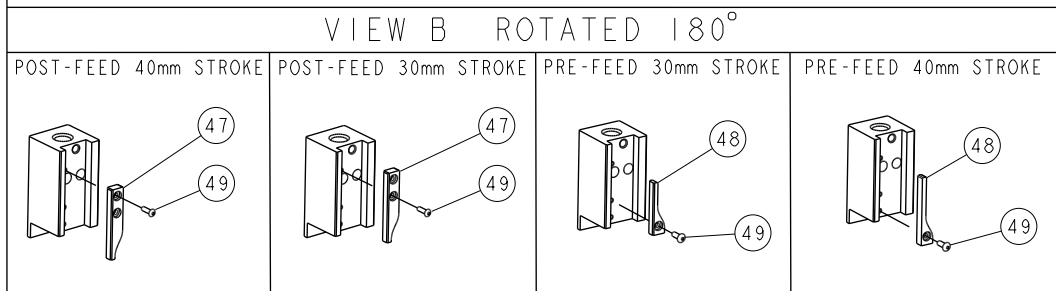
B

PART NUMBER	REV	TERMINATOR	FEED TYPE	DESCRIPTION
1528922-1	B	LEADMAKER	MECH POST FEED	CUTS CARRIER
1528922-2	B	BENCH	MECH PRE FEED	CUTS CARRIER
1528922-6	B	LEADMAKER	MECH POST FEED	CONTINUOUS CARRIER
7-1528922-1	B	LEADMAKER	MECH POST FEED	-1 AND SPARE PARTS
7-1528922-2	B	BENCH	MECH PRE FEED	-2 AND SPARE PARTS
7-1528922-6	B	LEADMAKER	MECH POST FEED	-6 AND SPARE PARTS
7-1528922-7	B	-	-	SPARE PARTS KIT

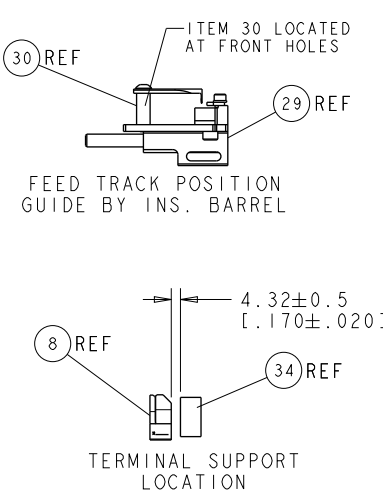
CRIMP DATA	TE TERMINAL	TE CRIMP SPECS
TERMINAL NAME: STANDARD POWER TIMER CONTACT		
CRIMP SIZE	TYPE	RANGE
WIRE 2.03 [.080 IN]	F	0.50-1.00mm ²
INSUL 3.30 [.130 IN]	F	2.00-2.70 [.079-.106 IN]
WIRE STRIP LENGTH 3.40-4.00 [.134-.157 IN]	APPL INSTRUCTIONS 408-8322 & 408-8490	
TERMINAL 114-18037	FEED 16.00 [.630 IN]	APPL SPEC
TERMINALS APPLIED		
927827	-	-
1241834	-	-
WIRE SIZE	CRIMP HEIGHT	REF SETTING
1.00mm ²	1.56 ± 0.05 [.061 ± .002 IN]	B 5
0.85mm ²	1.51 ± 0.05 [.059 ± .002 IN]	C 0
0.75mm ²	1.47 ± 0.05 [.058 ± .002 IN]	C 3
20 AWG	1.39 ± 0.05 [.055 ± .002 IN]	C 7
0.50mm ²	1.38 ± 0.05 [.054 ± .002 IN]	C 8

- RECOMMENDED SPARE PARTS.
- GREASE RAM, CAM, CAM FOLLOWER AND FEED ROD LIGHTLY.
 - CERTAIN TERMINALS REQUIRE LUBRICATION. REFER TO THE APPLICATOR INSTRUCTION SHEET FOR MORE INFORMATION.
 - LUBRICATE DAILY PER THE APPLICATOR INSTRUCTION SHEET SUPPLIED WITH THE APPLICATOR.

*** WARNING**
ON INSTALLATION, SET WIRE DISC TO LARGEST WIRE SIZE SETTING. USE OF SETTINGS BELOW MIN. REQUIRED CRIMP HEIGHT SETTING WILL CAUSE DAMAGE TO CRIMP TOOLING.



ITEM NO	PART NO	DESCRIPTION
84		
83		
82		
81		
80		
79		
78		
77		
76		
75		
74		
73		
72		
71		
70		
69		
68		
67		
66		
65		
64		
63		
62		
61		
60		
59		
58		
57		
56		
55		
54		
53		
52		
51		
50		
49		
48		
47		
46		
45		
44		
43		
42		
41		
40		
39		
38		
37		
36		
35		
34		
33		
32		
31		
30		
29		
28		
27		
26		
25		
24		
23		
22		
21		
20		
19		
18		
17		
16		
15		
14		
13		
12		
11		
10		
9		
8		
7		
6		
5		
4		
3		
2		
1		



SET UP GAGE 458637-3

REV	DESCRIPTION	DATE	OWN	APVD
A	SEE ECO-08-024403	01OCT2008	LJL	MC
B	ECR-16-000722	27JAN2016	RS	UG

ITEM NO	PART NO	DESCRIPTION	ITEM NO
73			
72			
71	1338705-3	DOCUMENTATION PACKAGE	
70			
69			
68			
67	461264-5	PLATE, IDENTIFICATION	
66	21017-2	SCREW, DRIVE	
65			
64			
63	3-18031-0	SCR, SET, CUP POINT M6 X 6.0	
62			
61	2-18032-5	SCR, SET, FLT POINT M5 X 20.0	
60	18024-7	SCR, BTN SKT HD CAP (M4 X 10.0)	
59	5-18022-2	SCR, HEX HD CAP M4 X 8.0	
58			
57			
56	1338685-1	PAWL, FEED	
55			
54	18024-8	SCR, BTN SKT HD CAP (M4 X 12.0)	
53	1-18023-2	SCR, SKT HD CAP M4 X 12.0	
52	18030-1	NUT, HEX, REG M3	
51	811242-6	BUMPER, HOLD DOWN	
50	690753-2	SPACER, TONKER	
49	18024-3	SCR, BTN SKT HD CAP (M3 X 10.0)	
48	1338675-1	CAM, UNIVERSAL PRE FEED	
47	1338676-1	CAM, UNIVERSAL POST-FEED	
46	1320999-3	APPLICATOR SUBASSEMBLY, HD1	
45	690191-1	PLUG, NYLON	
44	1338660-1	RAM	
43			
42			
41	2-18024-6	SCR, BTN SKT HD CAP (M8 X 25.0)	
40			
39	690125-1	SHIM SUB-ASSY	
38	469367-1	SHIM	
37	879103-2	FINE ADJUST HEAD ASSEMBLY	
36			
35			
34	2-1320934-7	SUPPORT, TERMINAL	
33	1-18024-0	SCR, BTN SKT HD CAP (M4 X 20.0)	
32	18027-2	WASHER, FLAT, REG M4	
31	1-18023-2	SCR, SKT HD CAP M4 X 12.0	
30	1-1320908-0	SPACER, STRIP GUIDE	
29	1633073-1	STRIP GUIDE ASSEMBLY	
28	1-455888-0	SPACER, CRIMPER	
27	1-22284-0	SPRING, COMPRESSION	
26	356835-1	LEVER, DRAG RELEASE	
25	240792-1	DRAG, TERMINAL	
24	1320928-2	STRIP GUIDE	
23	980371-4	SCR, SKT HD SHLDR 5.0 DIA X 6.0	
22	690472-2	STRIPPER	
21	1-18023-1	SCR, SKT HD CAP M4 X 10.0	
20	18025-2	WASHER, SPRG LOCK, REG M4	
19	690472-1	STRIPPER	
18			
17	1338684-1	SHEAR HOLDER, FRONT	
16			
15			
14			
13			
12	3-22280-3	SPRING, COMPRESSION	
11	356885-4	STOP, SHEAR	
10	1320921-1	SHEAR HOLDER, FRONT, CUT	
9	454276-1	FLOATING SHEAR, FRONT	
8	2-1333204-5	ANVIL, COMBINATION	
7			
6			
5	1-455889-4	DEPRESSOR, SHEAR	
4	1-238011-0	BLOCK, CRIMPER SPACER	
3	4-456134-4	CRIMPER, INSULATION F PREMIUM	
2	455888-8	SPACER, CRIMPER	
1	6-1803188-3	CRIMPER, WIRE	

AMP 4805 REV 31MAR2000

TE Connectivity

APVD: M. CLIFFORD

DATE: 31 JUL 2008

NAME: FINE ADJUST SIDE FEED HD1 APPLICATOR

APPLICATION SPEC: See Table

SIZE: A1

CAGE CODE: 00779

DRAWING NO: C-1528922

SCALE: 3:5

SHEET: 2 OF 2

REV: B1

Mouser Electronics

Authorized Distributor

Click to View Pricing, Inventory, Delivery & Lifecycle Information:

[TE Connectivity:](#)

[1528922-2](#)