

Type CB10 Series

Key Features

- Low Cost
- Robust Enclosed Construction
- Spindle Adjust Versions
- Flame Retardant
- Arrow Position Indicator
- Top, Bottom and Side Adjust Styles
- Stable in High Humidity
- Edgewheel Operation Style



Low price, versatility and stable environmental characteristics are important benefits of this product. Featuring an innovative carbon resistive element printed on film in a fully enclosed package, this potentiometer style is normally chosen for a wide range of applications in industrial, professional and consumer equipment.

Characteristics - Electrical

Resistance Range:	100R to 10M Linear , 1K to 1M Non-Linear
Resistance Values:	1, 2.2 & 4.7 in each decade
Resistance Tolerance:	± 20% (± 30% above 1 Megohms)
End Resistance:	< 3%
Power Rating @ 40°C:	0.15 Watts (derating to zero at 70°C)
Maximum Voltage:	Lin. 200V DC / Log. 150V DC
Rotational Noise (CRV):	<5% of Rn nominal
Temperature Coefficient:	±500 ppm/°C (< 100K ohms)
Slider Current:	50mA
Resolution:	Essentially Infinite
Electrical Adjustment:	240° Nominal 1 Turn

Characteristics - Mechanical

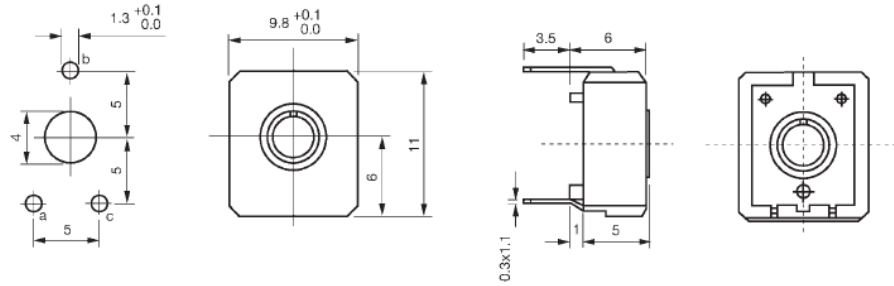
End Torque:	50 mNm maximum
Starting Torque:	4 to 20 mNm
Mechanical Adjustment:	295° nominal
Weight:	0.8 grams

Characteristics - Environmental

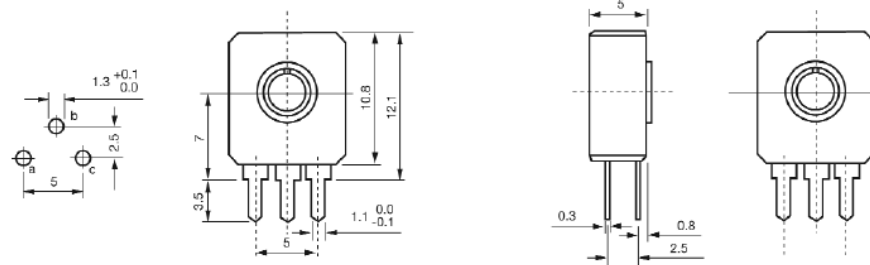
Temperature Range:	-25°C to +70°C
Temperature Storage:	1000 hours at 100°C
Rotational Life:	500 cycles, minimum (10000 cycles-extended life versions)
Load Life at 40°C:	ΔR <10% after 1000 hours
Sealing:	Dust proof IP level 5
Climate Category:	25/70/21

Type CB10 Series

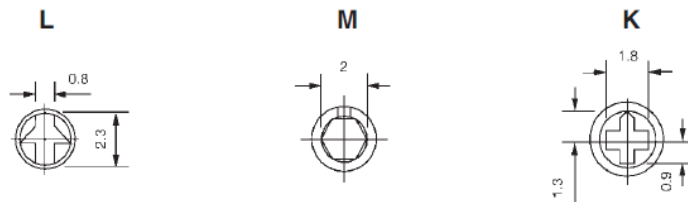
Dimensions CB10V



CB10H



Adjustment Styles

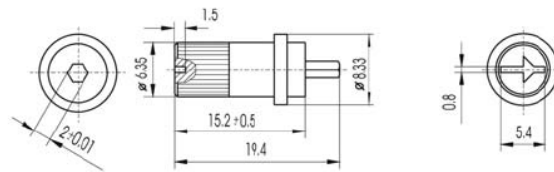


Type CB10 Series

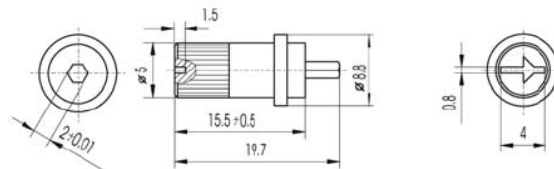
Plug-In Spindles / Edgewheels



Colour	Part Number
White	CB101161
Black	CB101387
Red	CB101490
Blue	CB101598



Colour	Part Number
White	CB101446
Black	CB101489
Red	CB101502



Colour	Part Number
White	CB101544
Black	CB101589
Red	CB101776

How to Order

CB10	L	H	102	M	-
Common Part	Adjustment Style	Orientation	Resistance Value	Tolerance	Features
CB10 - 10mm Carbon Trimmer	L - Arrow Head M - Hex Centre K - Cross Slot	H - Vertical to PCB V - Horizontal to PCB	The first two digits are significant figures of resistance value and the third denotes the number of zeros following. e.g. 100R: 101 1K0: 102 10K: 103 100K: 104	K - 10% (Special) M - 20% N - 30% (<1 Meg)	-- Standard E - Extended Life

TE Connectivity, TE connectivity (logo) and TE (logo) are trademarks.
Other logos, product and Company names mentioned herein may be trademarks of their respective owners.

While TE has made every reasonable effort to ensure the accuracy of the information in this datasheet, TE does not guarantee that it is error-free, nor does TE make any other representation, warranty or guarantee that the information is accurate, correct, reliable or current. TE reserves the right to make any adjustments to the information contained herein at any time without notice. TE expressly disclaims all implied warranties regarding the information contained herein, including, but not limited to, any implied warranties of merchantability or fitness for a particular purpose. The dimensions in this datasheet are for reference purposes only and are subject to change without notice. Specifications are subject to change without notice. Consult TE for the latest dimensions and design specifications.

Mouser Electronics

Authorized Distributor

Click to View Pricing, Inventory, Delivery & Lifecycle Information:

[TE Connectivity:](#)

[CB10LABKIT](#)