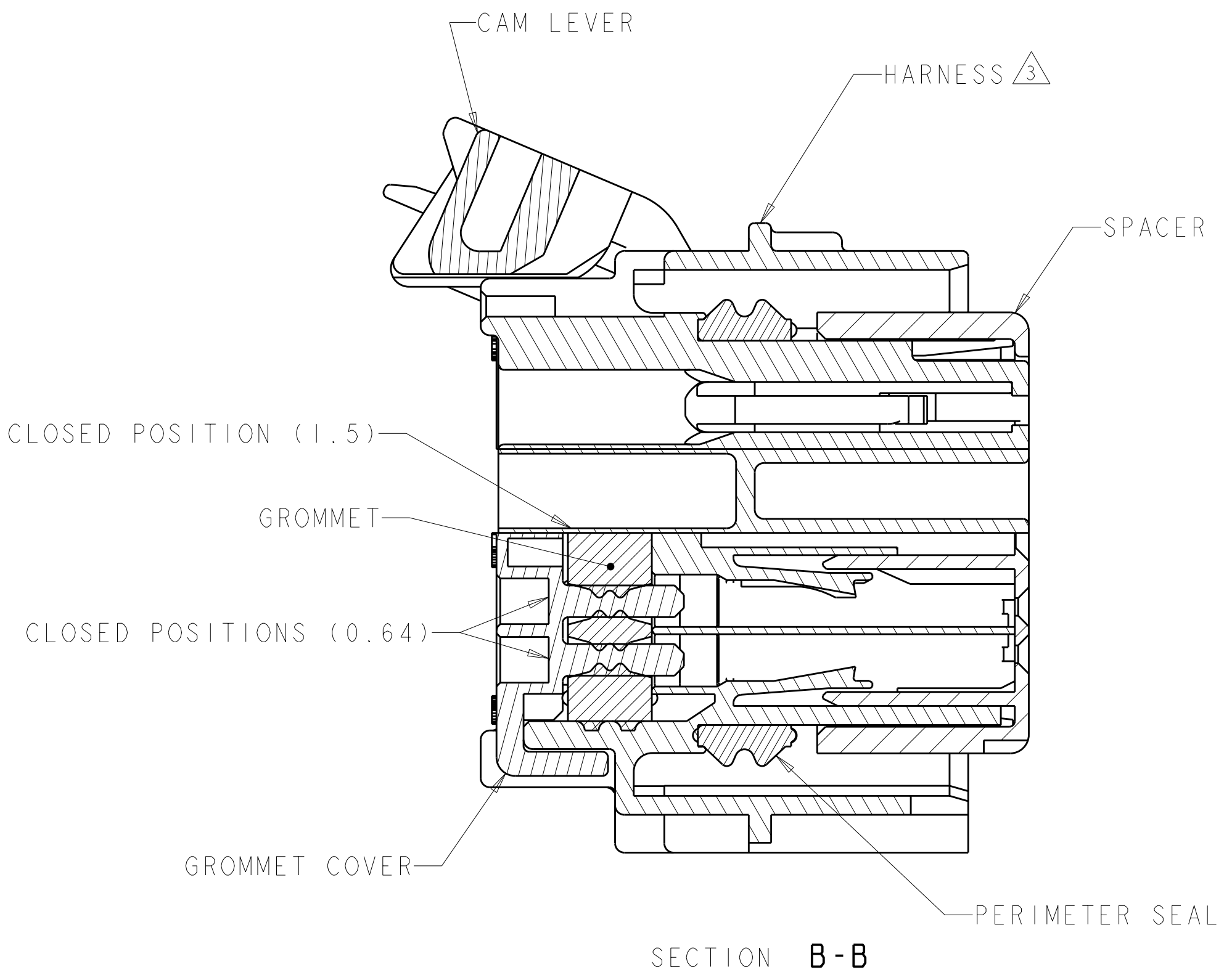
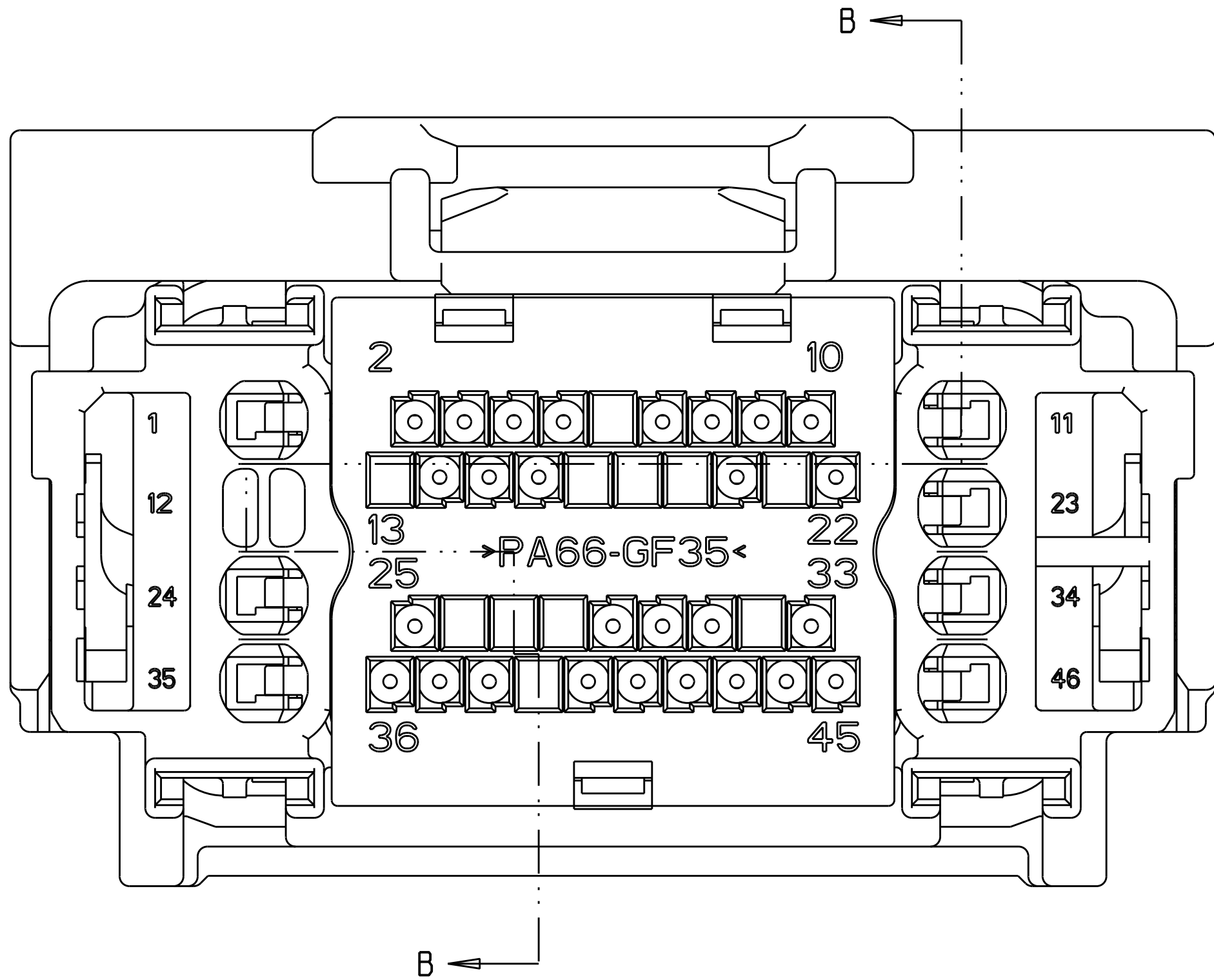
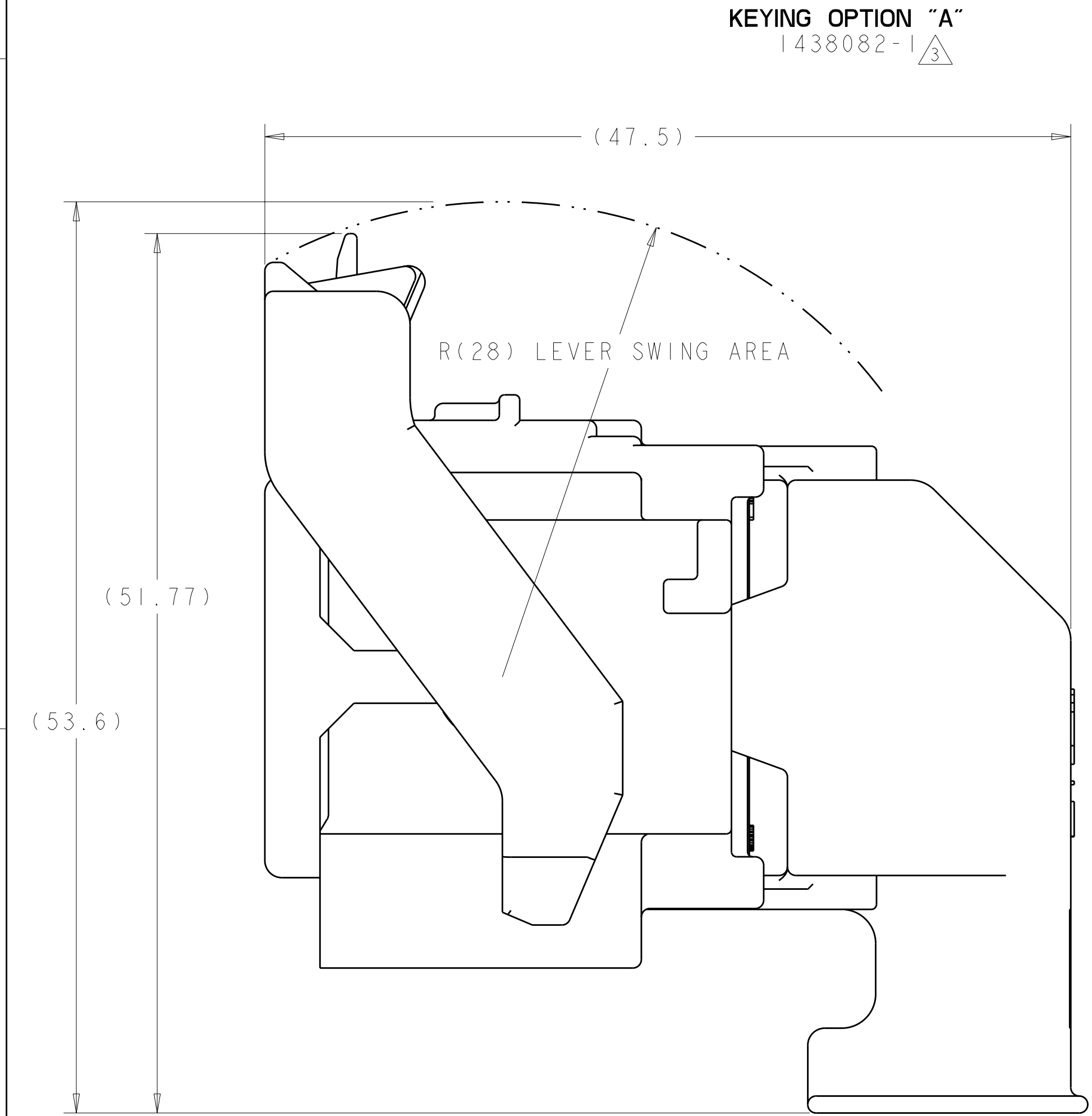


SCALE 1:1

KEYING OPTION "B"
1438082-2 \triangle_3




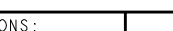
△ MATERIAL:
HARNES - 35% GLASS FILLED PA66, BLACK
ALT MAT'L: HARNES - 30% GLASS FILLED sPS, BLACK
SPACER - 40% GLASS FILLED PPS+PA66, RED
ALT MAT'L: 30% GLASS FILLED sPS, RED
ALT MAT'L: 35% GLASS FILLED PA66, RED
COVER - 35% GLASS FILLED PA66, BLACK
ALT MAT'L: COVER - 30% GLASS FILLED LCP, BLACK
CAM LEVER - 35% GLASS FILLED NYLON, GRAY
GROMMET - SILICONE, BROWN
PERIMETER SEAL - SILICONE, GREEN

2. CAM LEVER AND SPACER ARE SHIPPED IN PRE-LATCH POSITION.

③ SEE PINOUT CHART ON SHEETS 2, 3 AND 4 FOR CLOSED CIRCUIT CONFIGURATIONS.

④ CAVITIES WITH A NUMERIC SYMBOL INDICATES CLOSED TERMINAL LOCATIONS.
BLANK CAVITIES INDICATE OPEN TERMINAL HOLE LOCATIONS.

SHOWN WITH CAM LEVER AND SPACER
IN LOADED POSITION WITH
OPTIONAL WIRESHIELD

<small>1. THIS DRAWING IS THE PROPERTY OF TYCO ELECTRONICS CORPORATION. IT IS TO BE USED FOR THE MANUFACTURE OF THE PARTS SPECIFIED HEREON. IT IS NOT TO BE REPRODUCED OR COPIED FOR ANY OTHER PURPOSE. IT IS TO BE KEPT IN THE COMPANY'S FILES FOR THE LIFE OF THE PART.</small>		<small>DWG NO.</small> 01AUG2003 <small>CHKD BY</small> N. VESTAL <small>APP'D BY</small> D. STRAUSSER <small>DATE</small> 01AUG2003		 Tyco Electronics Tyco Electronics Harrisburg, PA 17105-3608	
<small>DIMENSIONS:</small> mm		<small>TOLERANCES UNLESS OTHERWISE SPECIFIED:</small> 0 PLOC ±.01 2 PLOC ±.03 3 PLOC ±.10 4 PLOC ±.05 ANGLES ±.5°		<small>NAME</small> 46 WAY PCM CONNECTOR HARNESS ASSEMBLY	
		<small>PRODUCT SPEC</small> <small>APPLICATION SPEC</small>		<small>SIZE</small> A <small>CAGE CODE</small> 00779 <small>DRAWING NO.</small> C-1438082 <small>RESTRICTED TO</small>	
<small>MATERIAL</small> SEE TABLE		<small>FINISH</small> SEE TABLE		<small>WEIGHT</small> - <small>CUSTOMER DRAWING</small>	
				<small>SCALE</small> 4:1 <small>SHEET</small> 1 OF 5 <small>REV</small>	

LOC	DIST	REVISIONS					
FX	00	P	LTR	DESCRIPTION	DATE	DWN	APVD
		-		SEE SHEET 1	-	-	-

		44								35		32							22								12		9	7	6				1	6-1438735-7	2LIT-14A464-SD-086															
		44								35		32															12		9	7	6				1	6-1438735-3	2LIT-14A464-SD-085															
										35																											6-1438735-2	2LIT-14A464-SD-084														
			43	42		40	39		37					29					20	18			15	14			11	10	9	8	7			4	3	1	6-1438735-1	2LIT-14A464-SD-083														
45		43						38		36			31				25	24					18	17	16		14	12				7	6			2	1	5-1438735-0	2LIT-14A464-SD-082													
45		43						38		36			31				25	24							16		14	12				7	6			2	1	4-1438735-9	2LIT-14A464-SD-081													
45		43						38		36		32	31				25	24		21	19	18	17	16		14	12				7	6				1	4-1438735-8	2LIT-14A464-SD-080														
45		43					39	38	37	36			31				25	24					18	17	16		14	13	12			9	7	6			2	1	4-1438735-7	2LIT-14A464-SD-079												
				42																20	18					13	11	10								2	1	3-1438735-8	2LIT-14A464-SD-078													
				42																20	18					13	11	10									1	3-1438735-7	2LIT-14A464-SD-077													
45		43					39	38	37	36			31				25	24		21	20	19	18	17		14	13	12			9					2	1	3-1438735-6	2LIT-14A464-SD-076													
45		43						38		36			31				25	24		21	20	19	18	17		14	12									2	1	3-1438735-5	2LIT-14A464-SD-075													
			43	42		40	39		37					29						20	18			15	14			11	10	9	8	7			4	3	2	1	3-1438735-3	2LIT-14A464-SD-074												
45		43					39	38	37	36			31				25	24			20	19	18	17		14	13	12			9					2	1	3-1438735-2	2LIT-14A464-SD-073													
45		43						38		36			31				25	24		21	20	19	18	17	16		14	12				7				2	1	3-1438735-1	2LIT-14A464-SD-072													
45		43					39	38	37	36			31				25	24		21	20	19	18	17	16		14	13	12			9	7				2	1	3-1438735-0	2LIT-14A464-SD-071												
45		43						38		36			31				25	24		21	20	19			16		14	12				7					2	1	2-1438735-9	2LIT-14A464-SD-070												
45		43					39	38	37	36			31				25	24		21	20	19			16		14	13	12			9	7				2	1	2-1438735-8	2LIT-14A464-SD-069												
45		43						38		36			31				25	24			20	19	18	17		14	12										2	1	2-1438735-6	2LIT-14A464-SD-068												
											33																13												2	1	2-1438735-5	2LIT-14A464-SD-067										
45	44	43	42		40			38	37	36		33	31				24	22	21	20		18	17	16	15					9	8						2		2-1438735-4	2LIT-14A464-SD-066												
			43										31		29							18									8							2		2-1438735-1	2LIT-14A464-SD-065											
45		43						38		36	35		31				25	24		21					16		14	12				7	6					2	1	2-1438735-0	2LIT-14A464-SD-064											
45		43					39	38	37	36	35		31				25	24					18	17	16		14	13	12			9	7	6				2	1	1-1438735-9	2LIT-14A464-SD-063											
45		43						38		36	35		32	31				25	24		21	19	18	17	16		14	12				7	6					1	1-1438735-8	2LIT-14A464-SD-062												
45		43						38		36	35		31				25	24							16		14	12				7	6					2	1	1-1438735-7	2LIT-14A464-SD-061											
45		43						38		36	35		31				25	24		21	19			16		14	12				7	6					2	1	1-1438735-6	2LIT-14A464-SD-060												
45		43						38		36	35		31				25	24					18	17	16		14	12				7	6					2	1	1-1438735-5	2LIT-14A464-SD-059											
45		43					39	38	37	36	35		31				25	24		21	19	18	17	16		14	13	12			9	7	6				2	1	1-1438735-4	2LIT-14A464-SD-058												
45		43						38		36	35		31				25	24		21	19	18	17	16		14	12				7	6					2	1	1-1438735-3	2LIT-14A464-SD-057												
				42					37											20	18				15	14		11	10	9	8	7			4	3	2	1	1-1438735-2	2LIT-14A464-SD-056												
45		43								36	35		31				24		21	19			16		14	12					7	6						1	1-1438735-1	2LIT-14A464-SD-055												
										35						27																					3			1-1438735-0	2LIT-14A464-SD-054											
				43									31		29								18							9	8							2		1438735-9	2LIT-14A464-SD-053											
										35						27																7								1438735-8	2LIT-14A464-SD-052											
46	45	44	43	42	41	40	39	38	37	36	35	34	33	32	31	30	29	28	27	26	25	24	23	22	21	20	19	18	17	16	15	14	13	12	11	10	9	8	7	6	5	4	3	2	1		PART NUMBER	FORD PART NUMBER				
TERMINAL HOLE POSITION																																																				
PIN-OUT CHART KEYING OPTION "A"																																																				

THIS DRAWING IS UNPUBLISHED. IT IS SUBJECT TO CHANGE WITHOUT NOTICE FOR TYCO ELECTRONICS CORPORATION. IT IS SUBJECT TO CHANGE WITHOUT NOTICE FOR THE CUSTOMER'S ORGANIZATION. IT IS SUBJECT TO CHANGE WITHOUT NOTICE FOR THE LATEST REVISION.

DIMENSIONS:

mm

MATERIAL

-

TOLERANCES UNLESS OTHERWISE SPECIFIED:

9 PLC ±.3

1 PLC ±0.10

5 PLC ±.

4 PLC ±.

ANGLES ±°

FINISH -

DWN R. VESTAL 01AUG2003

CHK D. STRAUSSER 01AUG2003

APVD D. STRAUSSER 01AUG2003

NAME

PRODUCT SPEC

APPLICATION SPEC

WEIGHT

CUSTOMER DRAWING

Tyco Electronics Harrisburg, PA 17105-3608

46 WAY PCM CONNECTOR HARNESS ASSEMBLY

SIZE A | CAGE CODE 00779 | DRAWING NO. 1438082 | RESTRICTED TO -

SCALE 4:1 | SHEET 3 OF 5 | REV. 1

Mouser Electronics

Authorized Distributor

Click to View Pricing, Inventory, Delivery & Lifecycle Information:

[TE Connectivity:](#)

[7-1438082-7](#)