



Quality Products. Service Excellence.

Type 4X, 6P Polycarbonate & General Purpose ABS Enclosures *1555 Series*

Watertight, Styled Lid, UL Listed Options

Key Features



- Ideally suited for mounting printed circuit boards or DIN rail mounted components (see photo features below for details).
- “Styled” lid version has three main advantages over our flat lid (1554 series) - also see photo features below:
 - Smooth recessed surface on lid for a membrane keypad or label
 - Standoffs molded in the interior of the lid (except for size “B”). Designed for #6 self tapping screws
 - More modern “styled” look vs. our traditional flat lid (1554 series)
- ABS Versions are molded from general purpose material which carries a flammability rating of UL94-HB. For indoor use.
- Polycarbonate versions are UV stabilized for outdoor use. Gray polycarb carries a UL94-5VA rating.
- Polycarbonate versions are UL 508A listed (File # E65324).
- Enclosure color is a light gray (RAL 7035).
- Gasketed lid with two piece “tongue & groove” construction provides protection against access of oil, dust and water.
- Gasket is one piece made from high temperature, U.L. listed silicone.
- Designed to meet NEMA Type 4, 4X, 6, 6P, 12 & 13 ratings which meet and exceed IP ratings up to and including IP68. (except 1555V which is NEMA 4/4X / IP66)
- Lid is secured with included M4 stainless steel machine screws which are threaded into integral stainless steel bushings for repetitive assembly & disassembly. All hardware is stainless steel to avoid corrosion caused by dissimilar metals.
- Lid screws are self capturing (lid holes are threaded with the first installation of lid screws).
- Internal features are maximized for mounting options and vary with size:
 - Internal DIN rail mounting tabs molded into most models, except sizes “C” and “D”.
 - Threaded (M3) integral brass inserts and/or standoffs (for #6 self tapping screws) for P.C. board or inner panel mounting in all but the smallest size (“B”).
 - Vertical P.C. card guides (for 1.5 mm thick P.C. boards) are molded in all but the smallest size (“B”).

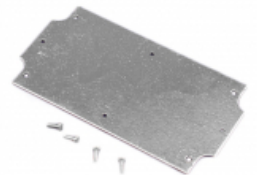
Photo Features



Styled lid offers a modern look and a smooth recess



Standoffs molded in the interior of the lid (except for



Galvanized steel inner panels are available (refer to table below).

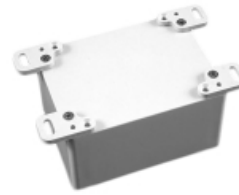
perfect for membrane
keypads or labels

size "B"). Designed for #6 self
tapping screws

Wall-mounting holes are
located outside of the gasket
channel

Same wall mounting holes
can be used to install an
accessory foot kit, **1554FT**

Internal mounting posts can
be used to mount accessory
inner panels, PC boards, or
DIN rails (inner panel shown)



Accessories

- Pole Mount Kit
- Breather Kit
- Liquid-Tight, Strain Relief Cordgrips
- Pressure Compensation Plug
- Small Rainproof Ventilator

Part Numbers

ABS Gray Lid	Polycarbonate (UL Listed) Gray Lid	Qty of Lid Screws	Length	Width	Total Height	Inner Panel	Foot Kit	Replacement Gasket	Replacement Lid Screws (50-pack)
1555BGY	1555B2GY	4	2.60	2.60	1.60	1554BPL	1554FT	1554BGASKET	SC576-50
1555EGY	1555E2GY	4	3.50	3.50	2.40	1554EPL	1554FT	1554EGASKET	SC576-50
1555EEGY	1555EE2GY	4	3.50	3.50	3.50	1554EPL	1554FT	1554EGASKET	SC576-50
1555LGY	1555L2GY	4	4.13	4.13	2.36	1554LPL	1554FT	1554LGASKET	SC576-50
1555LAGY	1555LA2GY	4	4.13	4.13	3.54	1554LPL	1554FT	1554LGASKET	SC576-50
1555CGY	1555C2GY	4	4.70	2.60	1.60	1554CPL	1554FT	1554CGASKET	SC576-50
1555DGY	1555D2GY	4	4.70	2.60	2.40	1554CPL	1554FT	1554CGASKET	SC576-50
1555FGY	1555F2GY	4	4.70	3.50	2.40	1554FPL	1554FT	1554FGASKET	SC576-50
1555GGY	1555G2GY	4	4.70	3.50	3.15	1554FPL	1554FT	1554FGASKET	SC576-50
1555NGY	1555N2GY	4	4.70	4.70	2.40	1554NPL	1554FT	1554NGASKET	SC576-50
1555PGY	1555P2GY	4	4.70	4.70	3.50	1554NPL	1554FT	1554NGASKET	SC576-50
1555QGY	1555Q2GY	4	5.51	5.51	2.36	1554QPL	1554FT	1554QGASKET	SC576-50
1555QAGY	1555QA2GY	4	5.51	5.51	3.54	1554QPL	1554FT	1554QGASKET	SC576-50
1555JGY	1555J2GY	4	6.30	3.50	2.40	1554JPL	1554FT	1554JGASKET	SC576-50
1555KGY	1555K2GY	4	6.30	3.50	3.50	1554JPL	1554FT	1554JGASKET	SC576-50
1555RGY	1555R2GY	4	6.30	6.30	2.40	1554RPL	1554FT	1554RGASKET	SC576-50
1555SGY	1555S2GY	4	6.30	6.30	3.50	1554RPL	1554FT	1554RGASKET	SC576-50
1555HGY	1555H2GY	4	7.10	4.70	2.40	1554HPL	1554FT	1554HGASKET	SC576-50
1555TGY	1555T2GY	4	7.10	4.70	3.50	1554HPL	1554FT	1554HGASKET	SC576-50
1555WGY	1555W2GY	4	7.10	7.10	2.36	1554WPL	1554FT	1554WGASKET	SC576-50
1555WAGY	1555WA2GY	4	7.10	7.10	3.54	1554WPL	1554FT	1554WGASKET	SC576-50
1555UGY	1555U2GY	4	7.90	4.70	3.50	1554UPL	1554FT	1554UGASKET	SC576-50
1555VGY	1555V2GY	4	9.40	6.30	3.50	1554VPL	1554FT	1554VGASKET	SC583-50
1555VAGY	1555VA2GY	6	9.40	6.30	3.50	1554VAPL	1554FT	1554VAGASKET	SC583-50
1555VBGY	1555VB2GY	6	9.40	6.30	4.70	1554VAPL	1554FT	1554VAGASKET	SC583-50

Data subject to change without notice

