

THIS DRAWING IS UNPUBLISHED. RELEASED FOR PUBLICATION
 © COPYRIGHT - By - TE CONNECTIVITY ALL RIGHTS RESERVED.

| LOC | DIST | REVISIONS | | | |
|-----|------|-------------|---------------------------|-----------|--------|
| P | LTR | DESCRIPTION | DATE | DWN | APVD |
| CM | 00 | V2 | REVISED PER ECR-17-018319 | 12JAN2018 | BDA SG |

D

D

C

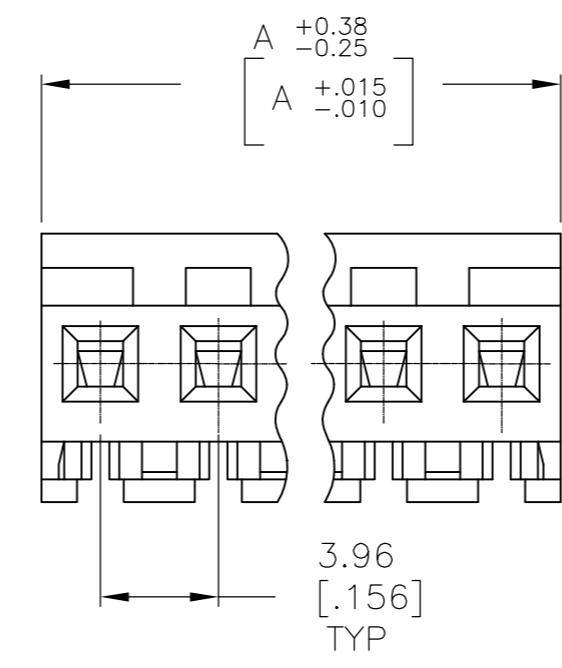
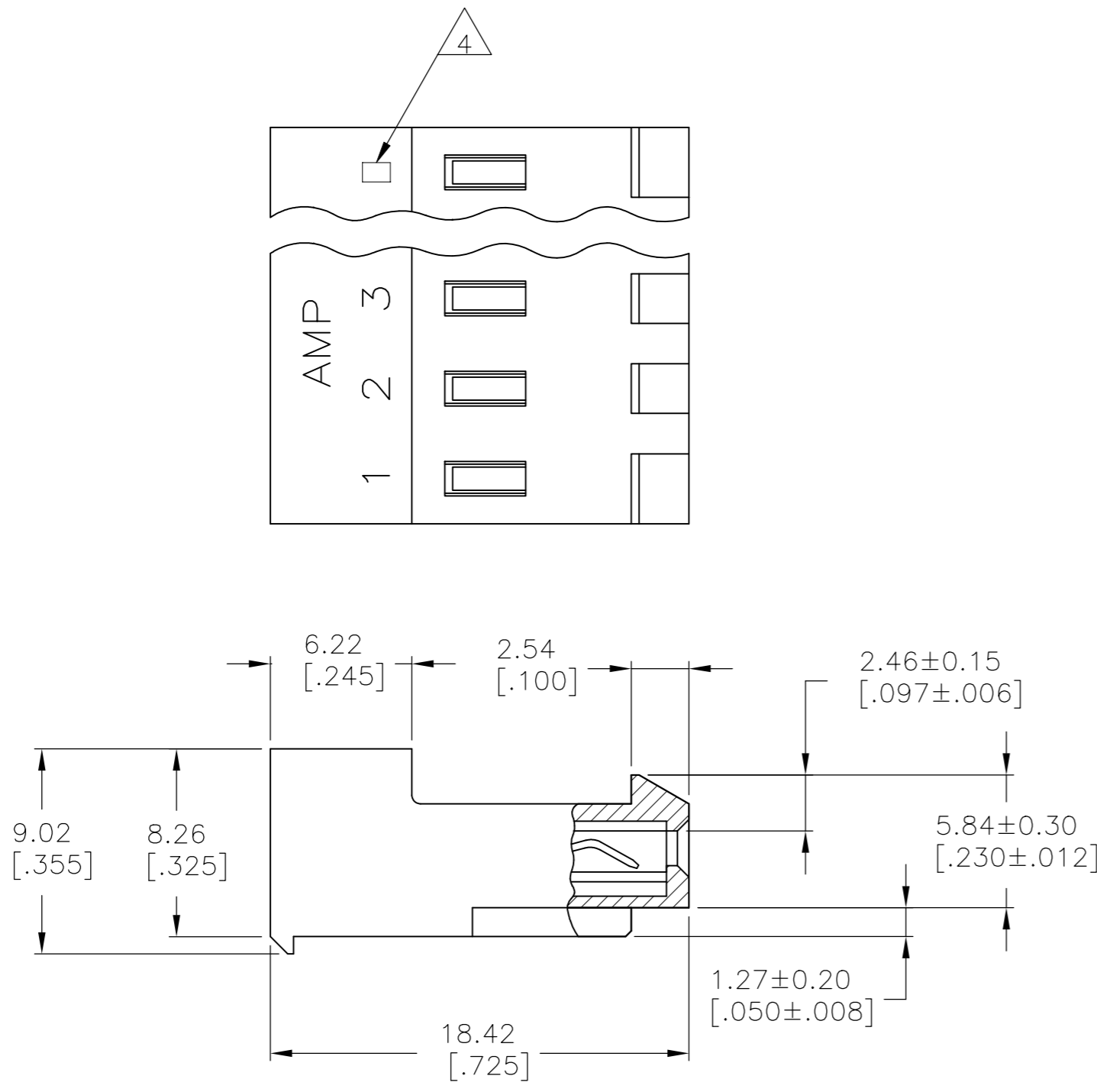
C

B

B

A

A



1 MATERIAL: CONNECTOR - NYLON UL94-V2 (BLUE).
 CONTACTS - 0.30[.012] THICK COPPER ALLOY
 (BRIGHT TIN-LEAD 0.00203[.000080] MIN. THICK
 FOR CONTACTS 640430-2 THRU 2-640430-4).
 (MATTE WHISKER MITIGATED TIN 0.00203[.000080]
 MIN. THICKNESS OVER NICKEL UNDERPLATE FOR
 3-640430-2 THRU 5-640430-4).

2 CONTACTS ACCEPT 26 AWG WIRE WITH 2.41[.095] MAX
 INSULATION DIAMETER.

3 CONTACTS MUST ACCEPT 1.14±0.03[.045]
 POST AND REMAIN LOCKED IN POSITION.

4 IDENTIFICATION NUMBER FOR LAST CIRCUIT MAY
 NOT APPEAR ON ALL ASSEMBLIES.

5 DIMENSIONS IN BRACKETS ARE IN INCHES.

6 HOUSING FEATURES ARE: CLOSED END WITH LOCKING
 RAMP.

7 OBSOLETE PARTS: OBSOLETE CIS STREAMLINING PER D.RENAUD/D.SINISI

8 OBSOLETE PARTS

| | | |
|--------------|--------------|--------------------------|
| 95.10[3.744] | 24 | 5-640430-4 |
| 91.13[3.588] | 23 | 5-640430-3 |
| 87.17[3.432] | 22 | 5-640430-2 |
| 83.21[3.276] | 21 | 5-640430-1 |
| 79.25[3.120] | 20 | 5-640430-0 |
| 75.29[2.964] | 19 | 4-640430-9 |
| 71.32[2.808] | 18 | 4-640430-8 |
| 67.36[2.652] | 17 | 4-640430-7 |
| 63.40[2.496] | 16 | 4-640430-6 |
| 59.44[2.340] | 15 | 4-640430-5 |
| 55.47[2.184] | 14 | 4-640430-4 |
| 51.51[2.028] | 13 | 4-640430-3 |
| 47.55[1.872] | 12 | 4-640430-2 |
| 43.59[1.716] | 11 | 4-640430-1 |
| 39.62[1.560] | 10 | 4-640430-0 |
| 35.66[1.404] | 9 | 3-640430-9 |
| 31.70[1.248] | 8 | 3-640430-8 |
| 27.74[1.092] | 7 | 3-640430-7 |
| 23.77[.936] | 6 | 3-640430-6 |
| 19.81[.780] | 5 | 3-640430-5 |
| 15.85[.624] | 4 | 3-640430-4 |
| 11.89[.468] | 3 | 3-640430-3 |
| 7.92[.312] | 2 | 3-640430-2 |
| △ SUPERCEDED | 95.10[3.744] | 24 2-640430-4 |
| △ SUPERCEDED | 91.13[3.588] | 23 2-640430-3 |
| △ SUPERCEDED | 87.17[3.432] | 22 2-640430-2 |
| △ SUPERCEDED | 83.21[3.276] | 21 2-640430-1 |
| △ SUPERCEDED | 79.25[3.120] | 20 1-640430-0 |
| △ SUPERCEDED | 75.29[2.964] | 19 1-640430-9 |
| △ SUPERCEDED | 71.32[2.808] | 18 1-640430-8 |
| △ SUPERCEDED | 67.36[2.652] | 17 1-640430-7 |
| △ SUPERCEDED | 63.40[2.496] | 16 1-640430-6 |
| △ SUPERCEDED | 59.44[2.340] | 15 1-640430-5 |
| △ SUPERCEDED | 55.47[2.184] | 14 1-640430-4 |
| △ SUPERCEDED | 51.51[2.028] | 13 1-640430-3 |
| △ SUPERCEDED | 47.55[1.872] | 12 1-640430-2 |
| △ SUPERCEDED | 43.59[1.716] | 11 1-640430-1 |
| △ SUPERCEDED | 39.62[1.560] | 10 1-640430-0 |
| △ SUPERCEDED | 35.66[1.404] | 9 -640430-9 |
| △ SUPERCEDED | 31.70[1.248] | 8 -640430-8 |
| △ SUPERCEDED | 27.74[1.092] | 7 -640430-7 |
| △ SUPERCEDED | 23.77[.936] | 6 -640430-6 |
| △ SUPERCEDED | 19.81[.780] | 5 -640430-5 |
| △ SUPERCEDED | 15.85[.624] | 4 -640430-4 |
| △ SUPERCEDED | 11.89[.468] | 3 -640430-3 |
| △ SUPERCEDED | 7.92[.312] | 2 -640430-2 |
| | DIM A | NO. OF CIRCUITS PART NO. |

| | | | | |
|--|--------|----------------------------------|--|---------------|
| THIS DRAWING IS A CONTROLLED DOCUMENT. | | DWN S. CARPENTER 08JUL2003 | TE Connectivity MTA 156 CONNECTOR ASSEMBLY, 26 AWG, STANDARD | |
| DIMENSIONS: mm [INCHES] | | CHK D. BOSSI 08JUL2003 | | |
| TOLERANCES UNLESS OTHERWISE SPECIFIED: | | APVD D. BOSSI 08JUL2003 | PRODUCT SPEC | RESTRICTED TO |
| 0 PLC ± - | | 108-1051 | APPLICATION SPEC | |
| 1 PLC ± - | | 114-1020 | WEIGHT | |
| 2 PLC ± - | | | SCALE | |
| 3 PLC ± 0.13 [.005] | | | SHEET | |
| 4 PLC ± - | | | REV | |
| ANGLES ± - | | | | |
| MATERIAL | FINISH | CUSTOMER DRAWING | | |
| 1 | 1 | A2 | 00779 | 640430 |
| | | 4:1 | 1 of 1 | V2 |

Mouser Electronics

Authorized Distributor

Click to View Pricing, Inventory, Delivery & Lifecycle Information:

[TE Connectivity:](#)

[3-640430-6](#)