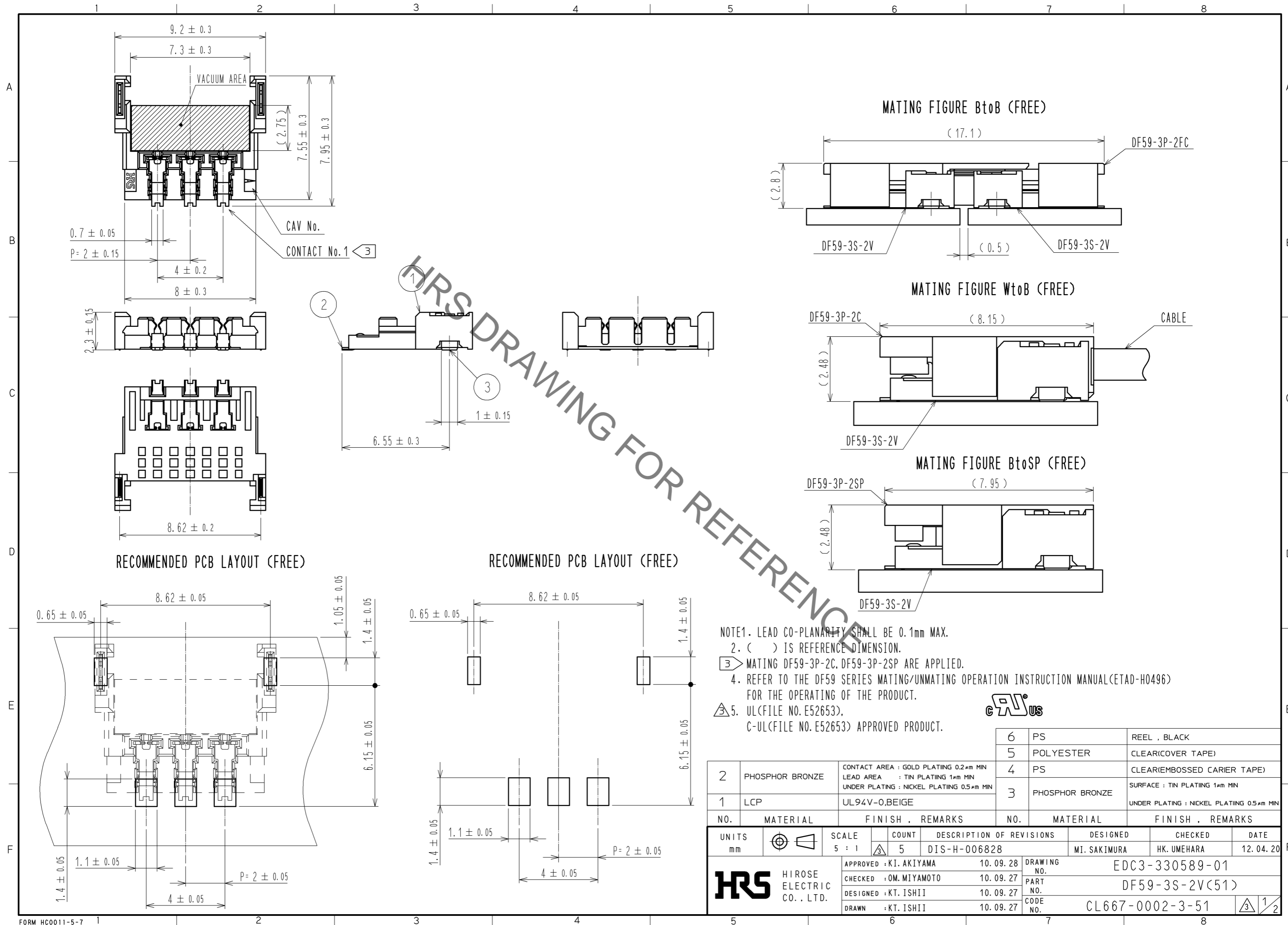


Mar.1.2020 Copyright 2020 HIROSE ELECTRIC CO., LTD. All Rights Reserved.
In case of consideration for using Automotive equipment / device which demand high reliability, kindly contact our sales window correspondents.

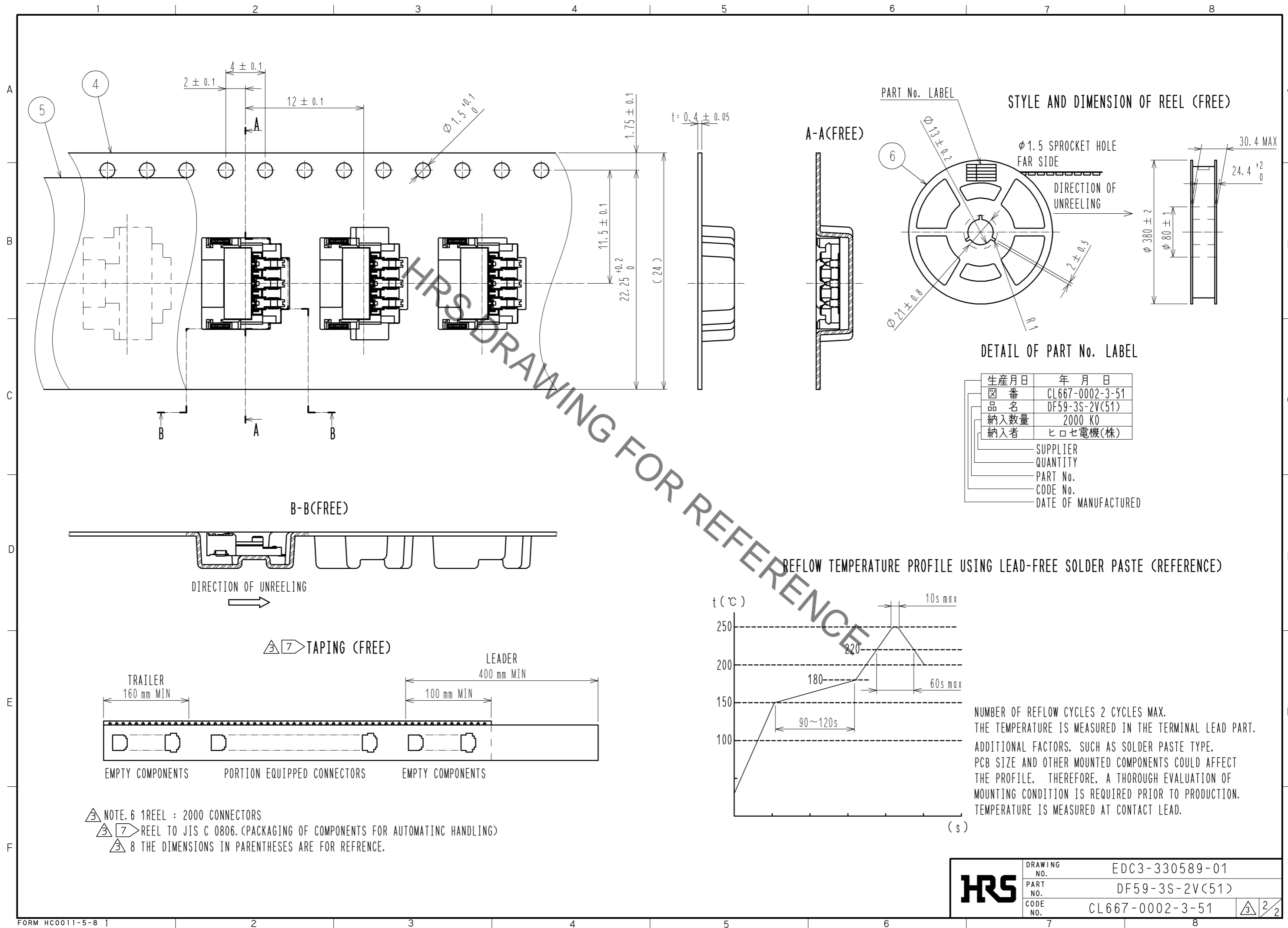


NOTE1. LEAD CO-PLANARITY SHALL BE 0.1mm MAX.
 2. () IS REFERENCE DIMENSION.
 ③ MATING DF59-3P-2C, DF59-3P-2SP ARE APPLIED.
 4. REFER TO THE DF59 SERIES MATING/UNMATING OPERATION INSTRUCTION MANUAL(ETAD-H0496) FOR THE OPERATING OF THE PRODUCT.
 ⑤ UL(FILE NO. E52653), C-UL(FILE NO. E52653) APPROVED PRODUCT.



| 2 | PHOSPHOR BRONZE | CONTACT AREA : GOLD PLATING 0.2µm MIN LEAD AREA : TIN PLATING 1µm MIN UNDER PLATING : NICKEL PLATING 0.5µm MIN | 6 | PS | REEL , BLACK | | | |
|-------|-----------------|--|------------|-----------------|---|-----------------|------|------------|
| 1 | LCP | UL94V-0,BEIGE | 5 | POLYESTER | CLEAR(COVER TAPE) | | | |
| | | | 4 | PS | CLEAR(EMBOSSSED CARRIER TAPE) | | | |
| | | | 3 | PHOSPHOR BRONZE | SURFACE : TIN PLATING 1µm MIN UNDER PLATING : NICKEL PLATING 0.5µm MIN | | | |
| NO. | MATERIAL | FINISH , REMARKS | NO. | MATERIAL | FINISH , REMARKS | | | |
| UNITS | mm | SCALE | 5 : 1 | COUNT | 5 | | | |
| | | DESCRIPTION OF REVISIONS | DESIGNED | MI. SAKIMURA | CHECKED | HK. UMEHARA | DATE | 12. 04. 20 |
| | | APPROVED : KI. AKIYAMA | 10. 09. 28 | DRAWING NO. | | EDC3-330589-01 | | |
| | | CHECKED : OM. MIYAMOTO | 10. 09. 27 | PART NO. | | DF59-3S-2V(51) | | |
| | | DESIGNED : KT. ISHII | 10. 09. 27 | CODE NO. | | CL667-0002-3-51 | | |
| | | DRAWN : KT. ISHII | 10. 09. 27 | | | ③ 1/2 | | |

Mar.1.2020 Copyright 2020 HIROSE ELECTRIC CO., LTD. All Rights Reserved.
In case of consideration for using Automotive equipment / device which demand high reliability, kindly contact our sales window correspondents.



| | | |
|------------|-------------|-----------------|
| HRS | DRAWING NO. | EDC3-330589-01 |
| | PART NO. | DF59-3S-2V(51) |
| | CODE NO. | CL667-0002-3-51 |
| | | ③ 2/2 |