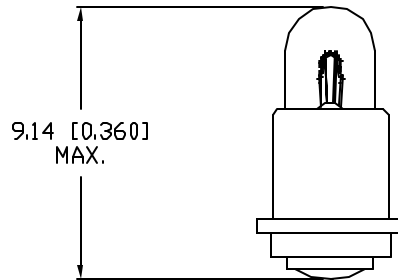
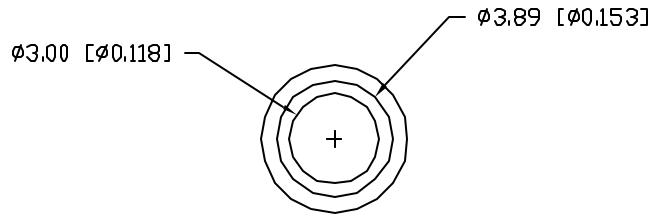


UNCONTROLLED DOCUMENT

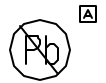
PART NUMBER		REV.
IFL-LX718		A
REV.	E.C.N. NUMBER AND REVISION COMMENTS	DATE
A	E.C.N. #11148.	01.12.07



ELECTRICAL SPECIFICATIONS	W/OUT BOOT ATTACHED
OPERATING VOLTAGE VAC. OR VDC.	5.0V
DESIGN VOLTAGE VAC. OR VDC.	5.0V
CURRENT DRAW @ DESIGN VOLTS	115mA
M.S.C.P. @ DESIGN VOLTS	0.15±0.25% M.S.C.P.
AVERAGE LIFE @ DESIGN VOLTS (AC)	40,000 HOURS

MECHANICAL SPECIFICATIONS	
BULB SIZE & SHAPE	T3.0mm TUBULAR
BULB GLASS TYPE	KG 12 SOFT GLASS
BASE OR LEAD FINISH	MIDGET FLANGE
FILAMENT SHAPE	C-2R
MANUFACTURING P55	IFL/T 3.0MF

ENVIRONMENTAL SPECIFICATIONS	
VIBRATION TESTING	MIL-E-5400N, GRAPH IV
SHOCK TEST	MIL-STD-883 METHOD 2002 TEST CONDITION A
OPERATION TEMP.	-50 TO +100°C
STORAGE TEMP.	-50 TO +125°C
SOLDERABILITY OF LEADS	MIL-STD 202F, METHOD 208D



UNCONTROLLED DOCUMENT

*UNLESS OTHERWISE SPECIFIED TOLERANCES PER DECIMAL PRECISION ARE: X=±1 (±0.039), XX=±0.5 (±0.020), XXX=±0.25 (±0.010), XXXX=±0.127 (±0.005). LEAD SIZE=±0.05 (±0.002), LEAD LENGTH=±0.75 (±0.030). MIN= +DECIMAL PRECISION -0.00 MAX.= +0.00 -DECIMAL PRECISION

REV. A	PART NUMBER IFL-LX718	<p>CONFIDENTIAL INFORMATION</p> <p>THE INFORMATION CONTAINED IN THIS DOCUMENT IS THE PROPERTY OF LUMEX INC. EXCEPT AS SPECIFICALLY AUTHORIZED IN WRITING BY LUMEX INC., THE HOLDER OF THIS DOCUMENT SHALL KEEP ALL INFORMATION CONTAINED HEREIN CONFIDENTIAL AND SHALL PROTECT SAME IN WHOLE OR IN PART FROM DISCLOSURE AND DISSEMINATION TO ALL THIRD PARTIES.</p> <p>RELIABILITY NOTE</p> <p>OUR MANY YEARS OF EXPERIENCE DATA ACCUMULATION INDICATE THAT SOLDER HEAT IS A MAJOR CAUSE OF EARLY AND FUTURE FAILURE. PLEASE PAY ATTENTION TO YOUR SOLDERING PROCESS.</p>	<p>290 E. HELEN ROAD PALATINE, IL 60067-6976 PHONE: +1.847.359.2790 US WEB: www.lumex.com TW WEB: www.lumex.com.tw</p>
T-1, MIDGET FLANGE, INCANDESCENT LAMP.		DRAWN BY: jc CHECKED BY: APPROVED BY:	DATE: 7.16.04 PAGE: 1 OF 1 SCALE: N/A

Mouser Electronics

Authorized Distributor

Click to View Pricing, Inventory, Delivery & Lifecycle Information:

[Lumex:](#)

[IFL-LX718](#)