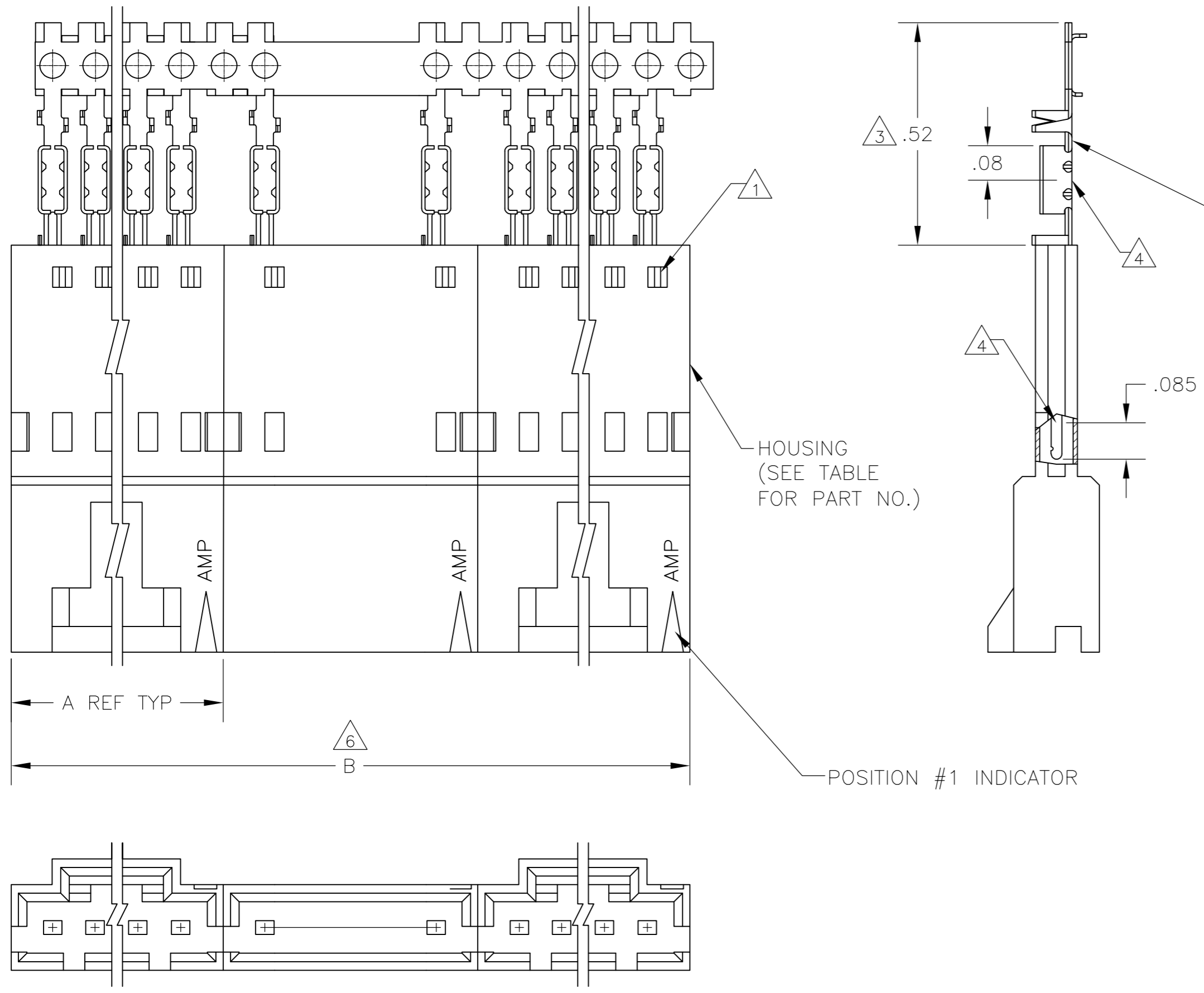


THIS DRAWING IS UNPUBLISHED. RELEASED FOR PUBLICATION  
 © COPYRIGHT - By - ALL RIGHTS RESERVED.

| LOC | DIST | REVISIONS                 |         |     |      |
|-----|------|---------------------------|---------|-----|------|
| P   | LTR  | DESCRIPTION               | DATE    | DWN | APVD |
| AD  | 00   |                           |         |     |      |
|     | M2   | REVISED PER ECO-11-004587 | 11MAR11 | RK  | HMR  |



CONTACT IDENTIFICATION LETTER "D" (LOCATED IN THIS AREA)

HOUSING (SEE TABLE FOR PART NO.)

POSITION #1 INDICATOR

|          |   |      |       |                     |            |                               |
|----------|---|------|-------|---------------------|------------|-------------------------------|
| 11       | 2 | 2.59 | 1.295 | 1-103653-1          | 12         | 6-103945-1                    |
| 11       | 2 | 2.39 | 1.195 | 1-103653-0          | 11         | 6-103945-0                    |
| 11       | 2 | 2.19 | 1.095 | 103653-9            | 10         | 5-103945-9                    |
| 11       | 2 | 1.99 | .995  | 103653-8            | 9          | 5-103945-8                    |
| 11       | 2 | 1.79 | .895  | 103653-7            | 8          | 5-103945-7                    |
| 11       | 3 | 2.39 | .795  | 103653-6            | 7          | 5-103945-6                    |
| 11       | 2 | 1.39 | .695  | 103653-5            | 6          | 5-103945-5                    |
| 11       | 4 | 2.38 | .595  | 103653-4            | 5          | 5-103945-4                    |
| 11       | 4 | 1.98 | .495  | 103653-3            | 4          | 5-103945-3                    |
| 11       | 5 | 1.98 | .395  | 103653-2            | 3          | 5-103945-2                    |
| 11       | 8 | 2.36 | .295  | 103653-1            | 2          | 5-103945-1                    |
| 10       | 4 | 1.98 | .495  | 103653-3            | 4          | 1-103945-7                    |
| 10       | 5 | 1.98 | .395  | 103653-2            | 3          | 1-103945-6                    |
| OBSOLETE | 9 | 2.19 | 1.095 | 103653-9            | 10         | 1-103945-5                    |
| 10       | 2 | 1.39 | .695  | 103653-5            | 6          | 1-103945-4                    |
| OBSOLETE | 9 | 4    | 2.38  | 103653-4            | 5          | 1-103945-3                    |
| 10       | 8 | 2.36 | .295  | 103653-1            | 2          | 1-103945-2                    |
| 8        | 2 | 2.59 | 1.295 | 1-103653-1          | 12         | 1-103945-1                    |
| 8        | 2 | 2.39 | 1.195 | 1-103653-0          | 11         | 1-103945-0                    |
| 8        | 2 | 2.19 | 1.095 | 103653-9            | 10         | 103945-9                      |
| 8        | 2 | 1.99 | .995  | 103653-8            | 9          | <del>103945-8</del>           |
| 8        | 2 | 1.79 | .895  | 103653-7            | 8          | 103945-7                      |
| 8        | 3 | 2.39 | .795  | 103653-6            | 7          | 103945-6                      |
| 8        | 2 | 1.39 | .695  | 103653-5            | 6          | 103945-5                      |
| 8        | 4 | 2.38 | .595  | 103653-4            | 5          | 103945-4                      |
| 8        | 4 | 1.98 | .495  | 103653-3            | 4          | 103945-3                      |
| 8        | 5 | 1.98 | .395  | 103653-2            | 3          | 103945-2                      |
| 8        | 8 | 2.36 | .295  | 103653-1            | 2          | 103945-1                      |
| PLATING  | 6 | B    | A     | HOUSING PART NUMBER | NO OF POSN | ASSEMBLY POSN NUMBER ON STRIP |

12 SUPERSEDED BY 5-103945-8

- 1 CONTACTS ARE LATCHED INTO THE PRELOAD WINDOWS
- 2 USE WITH #22-#26 AWG WIRE SIZE, .054/.030 INSULATION DIAMETER, .015 MAXIMUM INSULATION THICKNESS
- 3 THE DIMENSION APPLIES WITH THE FORWARD PRELOAD STOP IN CONTACT WITH THE HOUSING SURFACE
- 4 POINT OF MEASUREMENT FOR PLATING THICKNESS
- 5 FOR INDIVIDUAL ASSEMBLIES SEE PART NUMBER 103660
- 6 ASSEMBLIES ARE JOINED BY THE CARRIER STRIP. ORDER QUANTITY REFLECTS TOTAL NUMBER OF INDIVIDUAL ASSEMBLIES REQUIRED. SEE TABLE FOR NUMBER OF ASSEMBLIES PER STRIP.
- 7 MATERIAL- HOUSING: FLAME RETARDANT THERMOPLASTIC, COLOR: BLACK PINS: PHOS. BRONZE
- 8 FINISH- PINS: .000015 GOLD IN THE CONTACT AREA, .000050-.000100 BRIGHT TIN-LEAD ON THE TERMINATION AREA, OVER .000050 NICKEL.
- 9 FINISH- PINS: .000015 GOLD IN THE CONTACT AREA, .000050-.000100 BRIGHT TIN ON THE TERMINATION AREA, OVER .000050 NICKEL.
- 10 PRELIMINARY PART - NOT RELEASED FOR PRODUCTION.
- 11 FINISH- PINS: .000015 GOLD IN THE CONTACT AREA, .000050-.000100 MATTE TIN ON THE TERMINATION AREA, OVER .000050 NICKEL.
- 12 OBSOLETE PARTS: OBSOLETE CIS STREAMLINING PER D.RENAUD/D.SINISI

THIS DRAWING IS A CONTROLLED DOCUMENT.

|      |          |         |
|------|----------|---------|
| DWN  | R.BROWN  | 26JUL00 |
| CHK  | K.WRIGHT | 26JUL00 |
| APVD | K.WRIGHT | 26JUL00 |

TE Connectivity

SHROUDED PIN ASSY, AMPMOW MTE, SINGLE ROW, .100 CL, POLARIZED, W/ LATCH WINDOWS, FOR #22-#26 AWG WIRE SIZE, STRIP FORM

|                  |           |
|------------------|-----------|
| NAME             | 108-25034 |
| PRODUCT SPEC     | 114-25026 |
| APPLICATION SPEC |           |
| SIZE             | A2        |
| CAGE CODE        | 00779     |
| DRAWING NO       | C=103945  |
| RESTRICTED TO    |           |

SCALE 4:1 SHEET 1 of 1 REV M2

# Mouser Electronics

Authorized Distributor

Click to View Pricing, Inventory, Delivery & Lifecycle Information:

[TE Connectivity:](#)

[103945-1](#)