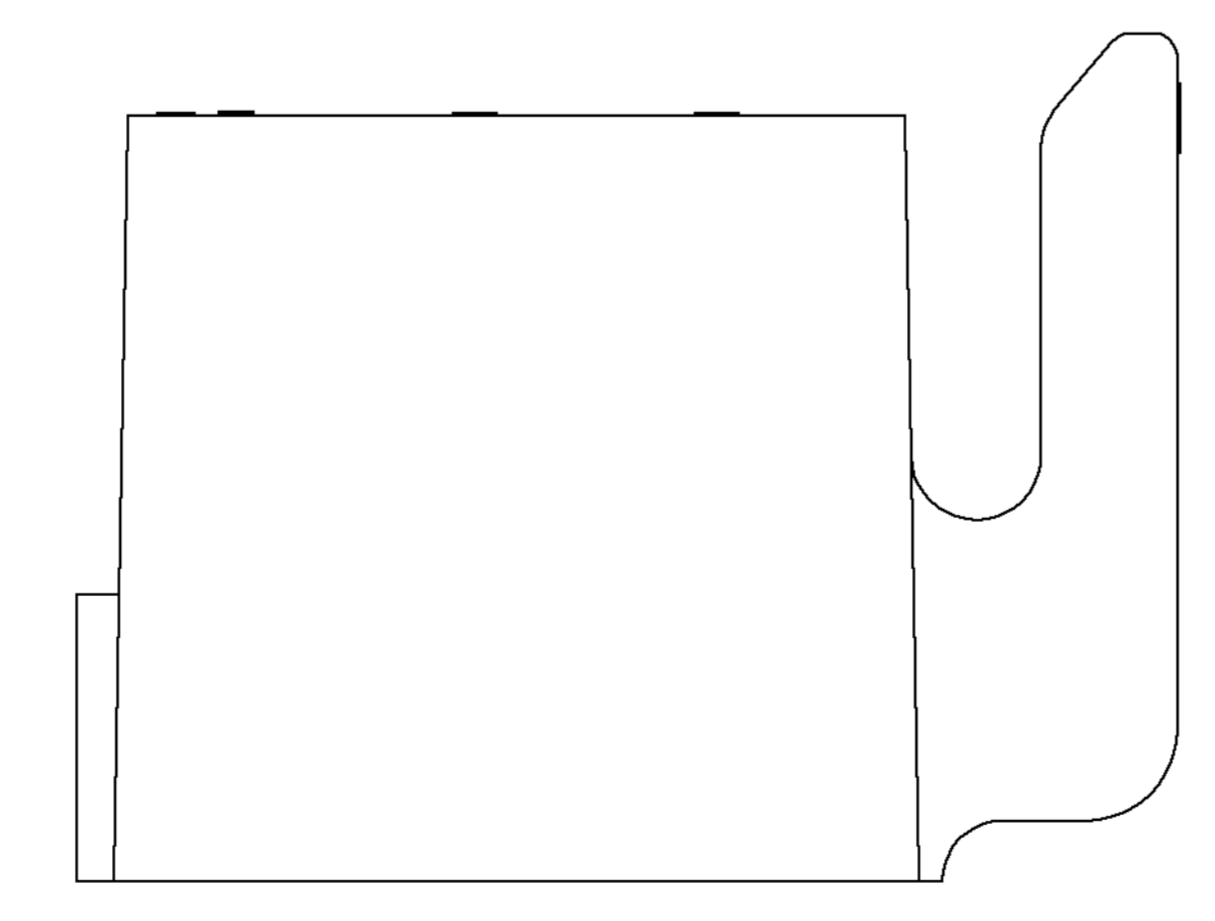
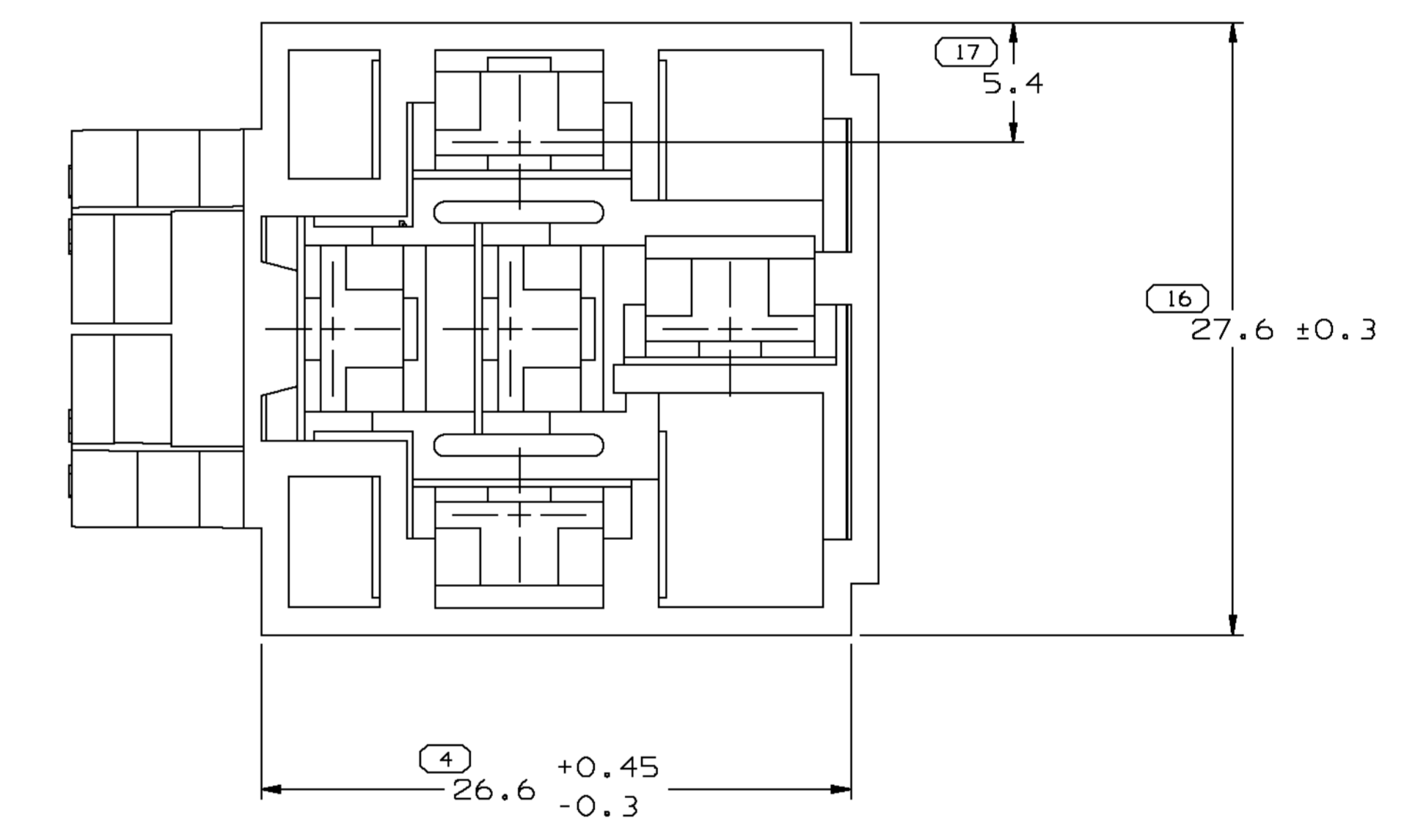
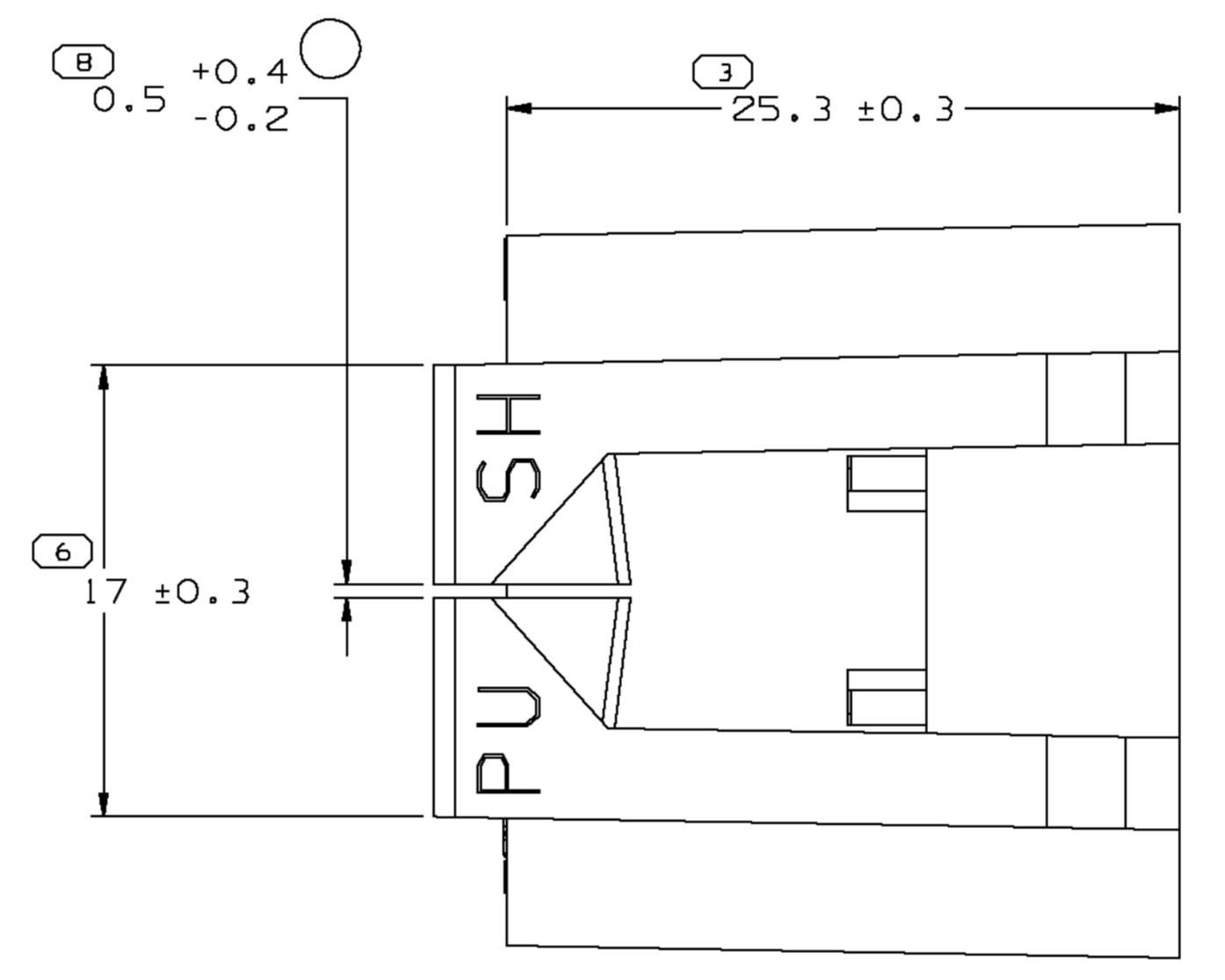
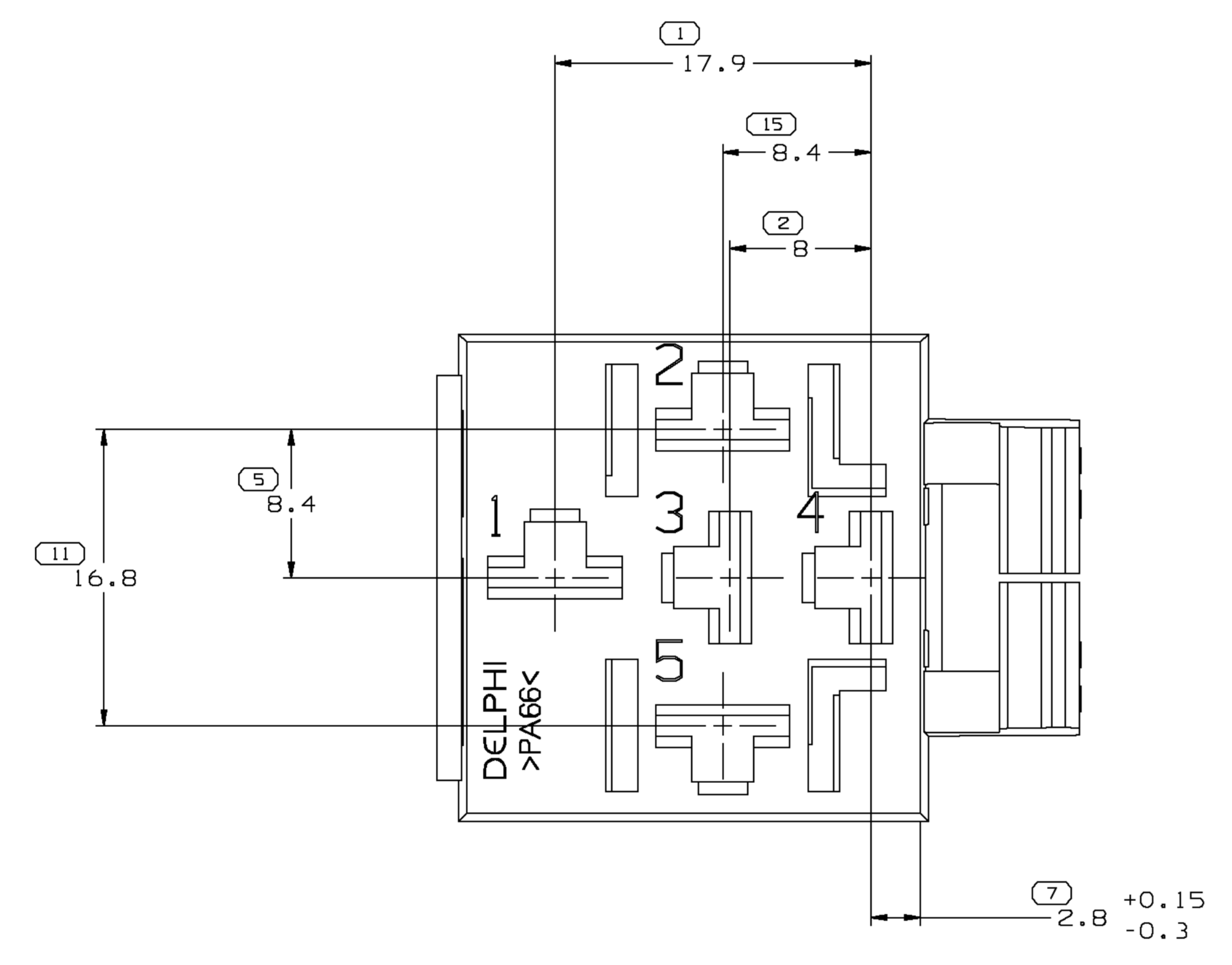
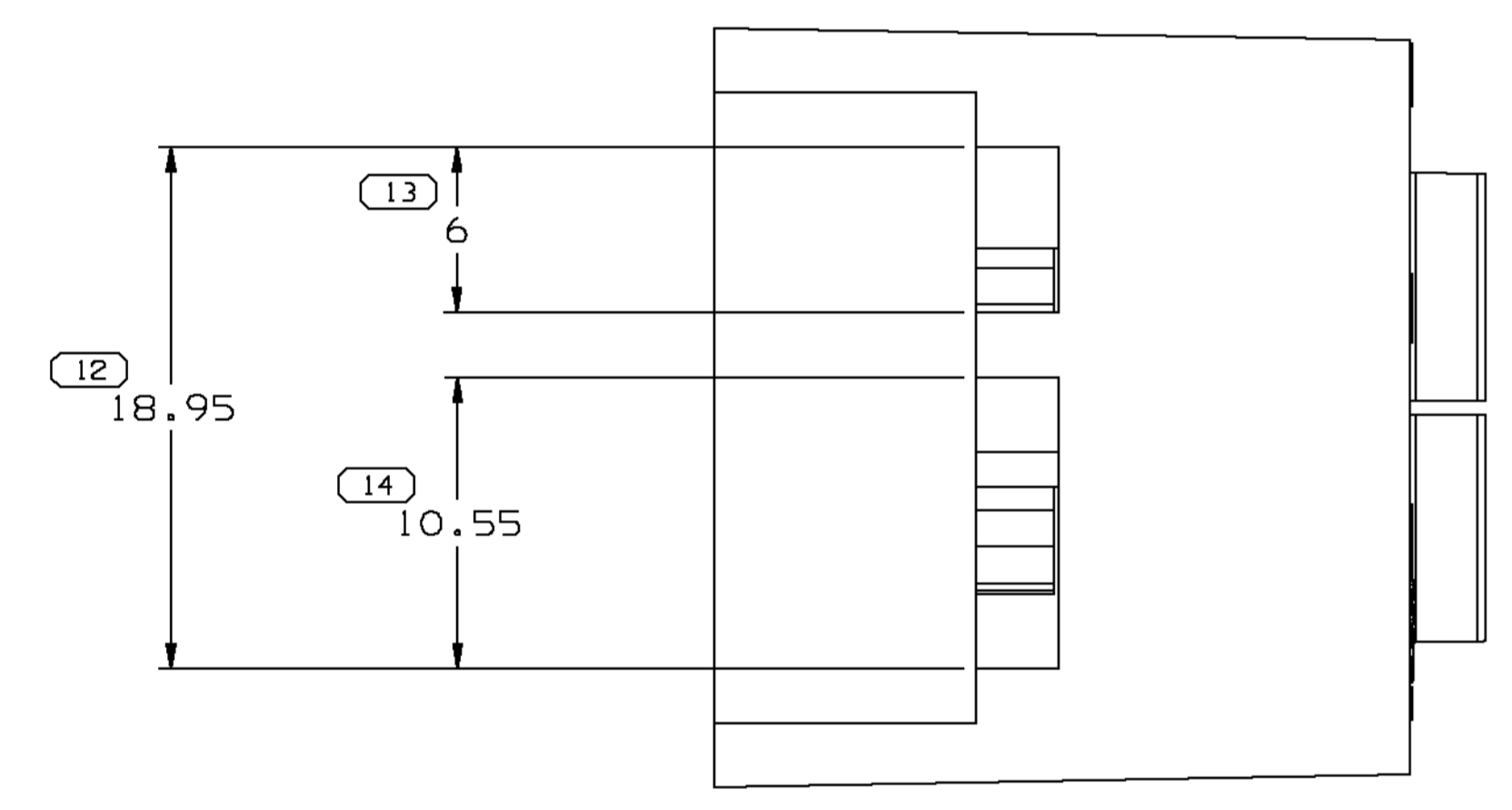
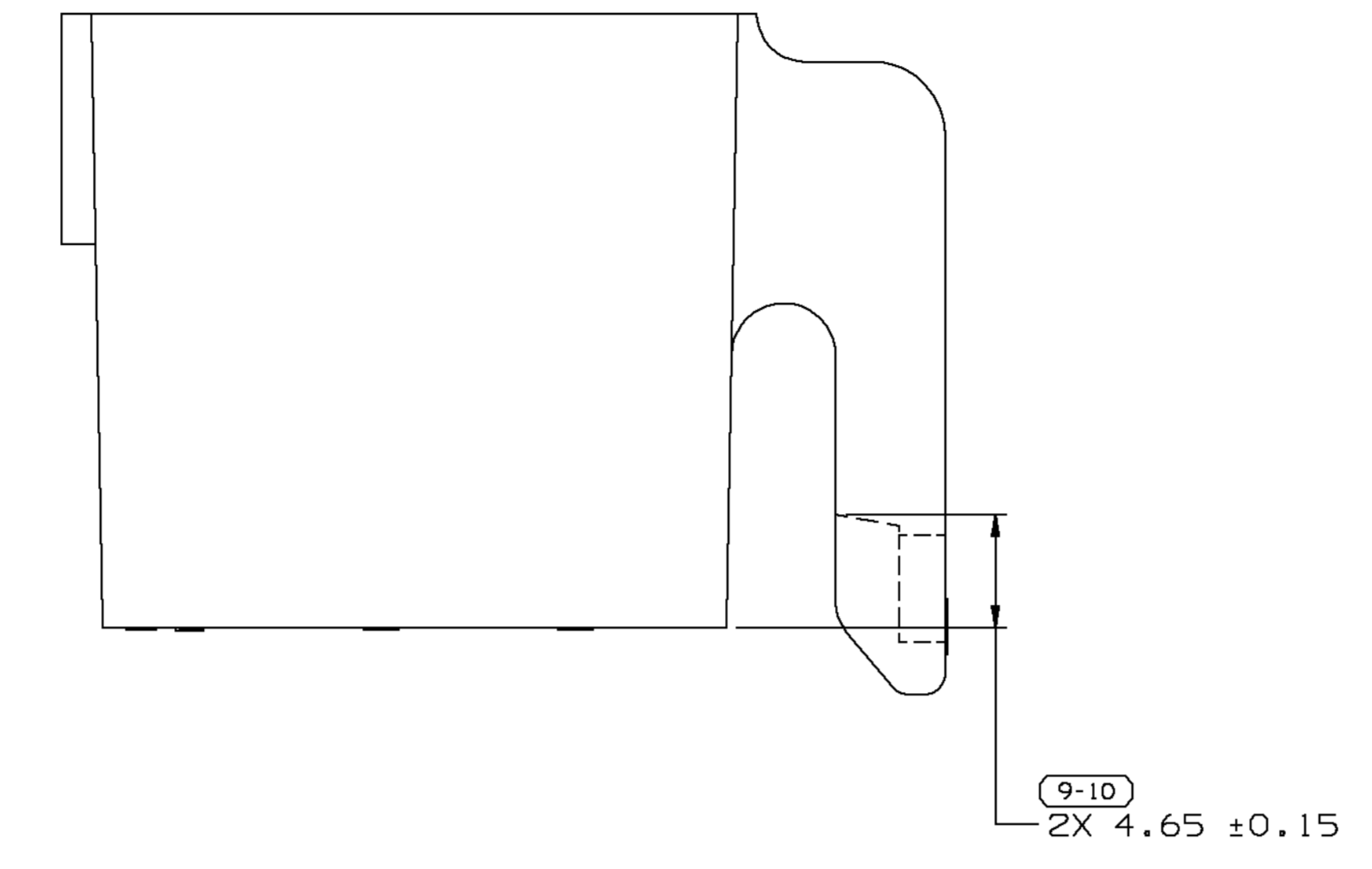
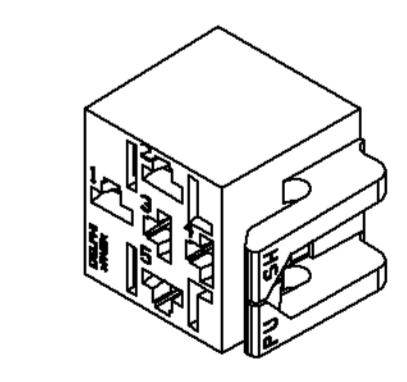


SYMBOL DEFINITION		MISSING NUMBERS		DWG STATUS				REVISION HISTORY				AUTH	DR	APVD	APVD
DATE	STG	REV	M/P	CHG	ZONE	DATE	REV	BY	REASON						
22AP02	R	E1	-	-					REDRAWN TO PD	202423	JYD	JYD	JH		
10JUL02	R	06	-	-					MAT'L SPEC WAS R0067547 & 0.5 +0.4/-0.2 WAS 0.5 +0.15/-0.2	227122	RCH	RCH	JH		



NOTES

- UNLESS OTHERWISE SPECIFIED AND/OR INDICATED: DIMENSIONS ARE TO FACE OF VIEW SHOWN AND AUTOMATICALLY ROUNDED BY COMPUTER FOR INSPECTION (SEE MATH MODEL FOR PRECISE DIMENSIONS). FOR ALL OTHER DIMENSIONS NOT SHOWN BUT REQUIRED FOR TOOL BUILD, SEE MATH MODEL FOR PRECISE TOOL PATH DATA.
- MATING COMPONENTS OR EQUIVALENT:
CONNECTOR BOSCH RELAY A332 202 245
SECONDARY LOCK 12033872
- THIS PART ACCEPTS THE FOLLOWING COMPONENTS OR EQUIVALENT:
CAVITIES 1, 2 & 5 TO ACCEPT 12015838, 12015832 TERMINAL OR EQUIVALENT.
- MATERIAL RECYCLING CODE >PA66< PER SAE J1344. (2.3)X(0.1) RAISED CHARACTERS AS SHOWN TO BE LOCATED ON ANY EXTERIOR SURFACE. OPTIONAL CONSTRUCTION TO BE NO MATERIAL RECYCLING CODE.
- (2.3)X(0.1) RAISED DELPHI CORPORATE BRAND TO BE LOCATED ON ANY EXTERIOR SURFACE, PREFERABLY VISIBLE AT FINAL ASSEMBLY. OPTIONAL CONSTRUCTION TO BE "PED" OR NO LOGO.
- THIS PART DESIGNED TO ACCEPT 11.5 ± 0.5 LENGTH BLADES IN MATING CONNECTORS
- MAXIMUM CABLE SIZE USABLE IN CAVITIES 2 & 5 IS DOUBLE 3MM² (1.95MM MAX CRIMP HEIGHT)



<p>4 PROCESS SENSITIVE DIMENSION</p>		<p>DIMENSIONS ENCLOSED IN () INDICATE REFERENCE DIMENSIONS AND NO TOLERANCE LIMITS ARE ESTABLISHED</p>		<p>THIRD ANGLE PROJECTION</p>		<p>DO NOT SCALE</p>	
<p>FROM 0 TO 20</p>		<p>FROM 20 TO 30</p>		<p>FROM 30 TO 70</p>		<p>FROM 70 TO 100</p>	
<p>TO 20</p>		<p>TO 30</p>		<p>TO 70</p>		<p>TO 100</p>	
<p>±0.15</p>		<p>±0.2</p>		<p>±0.3</p>		<p>±0.4</p>	
<p>±0.2</p>		<p>±0.3</p>		<p>±0.5</p>		<p>±0.8</p>	
<p>±0.1</p>		<p>±0.2</p>		<p>±0.3</p>		<p>±0.5</p>	
<p>±0.1</p>		<p>±0.2</p>		<p>±0.3</p>		<p>±0.5</p>	

DELPHI
DELPHI PACKARD ELECTRIC SYSTEMS
WARREN, OH

DR	DATE
APVD1 R.E.D.	11MRB2
APVD2 R.N.S.	20MRB2
APVD3 R.E.D.	31MRB2
APVD4	
APVD5	

MATERIAL: M3592001 - PA66 1M HS BLK

DRAWING NAME: CONN 5F M/P 630 SLP

DRAWING NUMBER: 12034003

SIZE: A0 SCALE: 4:1 FRAME NO: 1 OF 1 SHEET NO: 1 OF 1 STG: REV: M/P: R: 06

Mouser Electronics

Authorized Distributor

Click to View Pricing, Inventory, Delivery & Lifecycle Information:

[Aptiv:](#)
[12034003](#)