

1 MATERIAL: HOUSINGS LCP, COLOR: NATURAL
CONTACT: PHOSPHOR BRONZE.
SOLDER BALL: SEE TABLE
FILM TAPE: KAPTON WITH SILICON ADHESIVE.

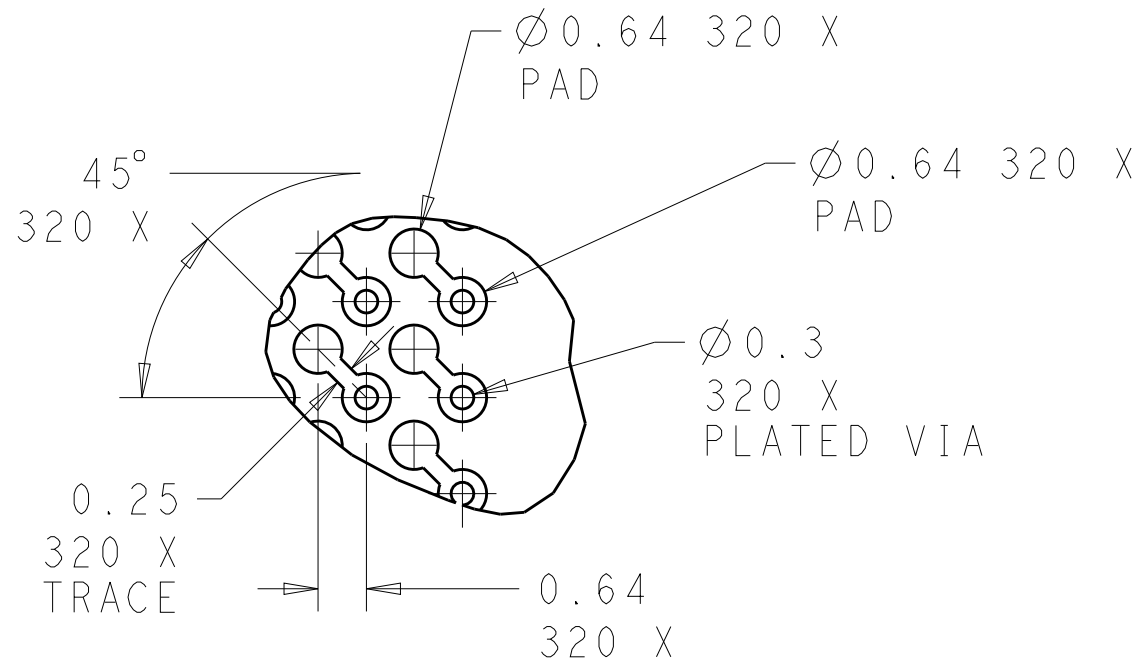
2 FINISH: CONTACTS: GOLD (SEE TABLE) ON MATING AREAS
NICKEL ON ENTIRE CONTACT.

3. PRODUCT IS PACKAGED ON TAPE AND REELED.

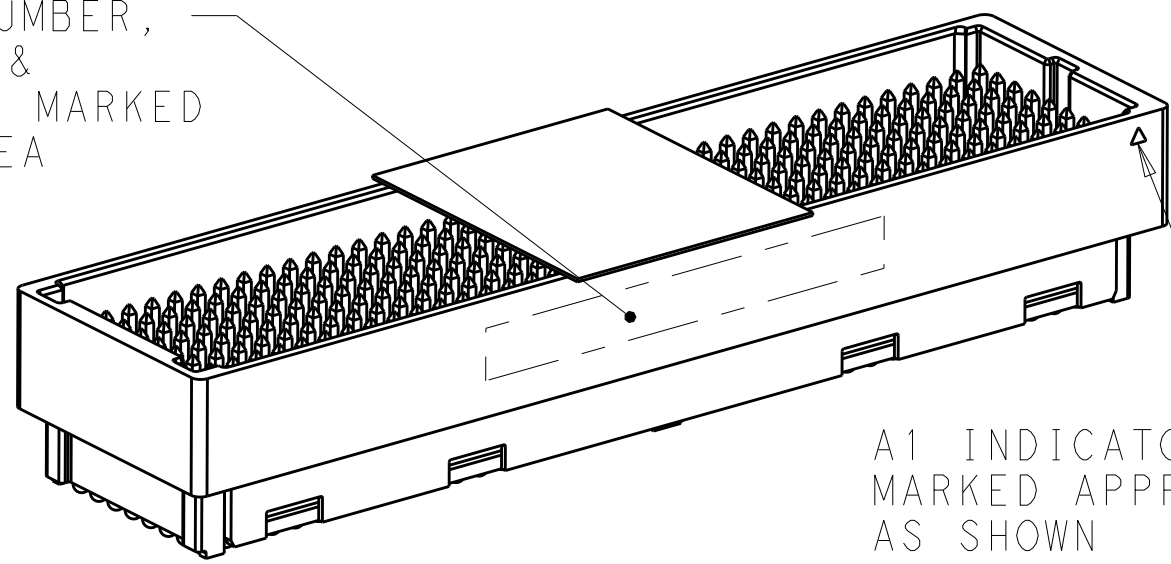
4 PRELIMINARY PART.

5 DIAGRAM REPRESENTS THE REELING DIRECTION OF THE
PACKAGED CONNECTORS. THERE ARE 10 EMPTY POCKETS AT THE
BEGINNING OF THE REEL AND 15 EMPTY POCKETS AT THE END OF
THE REEL.

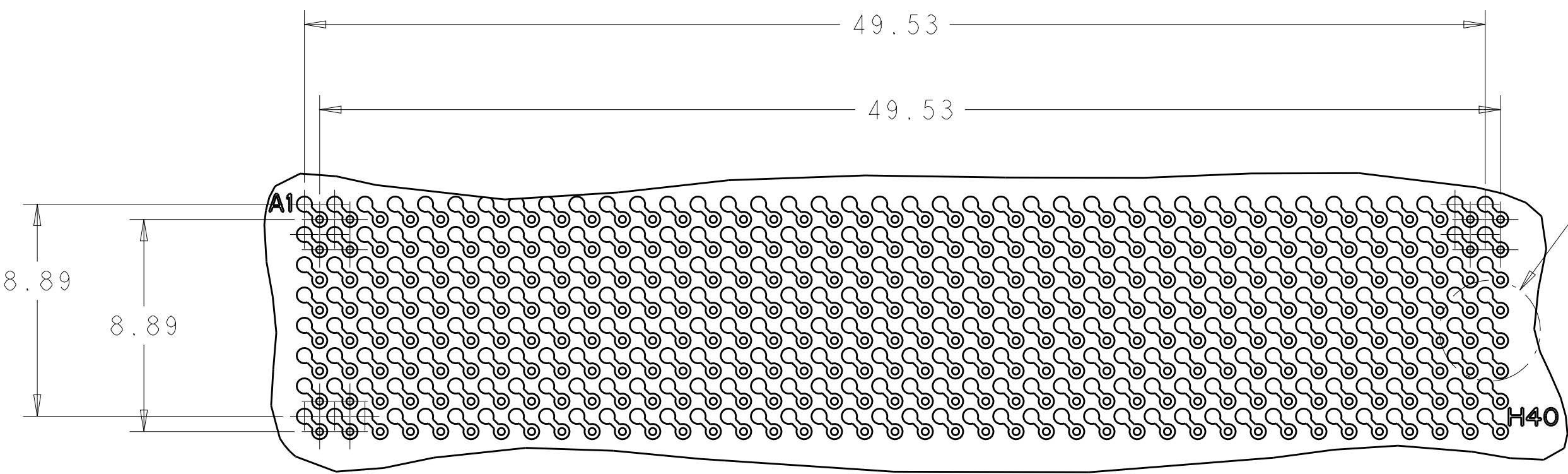
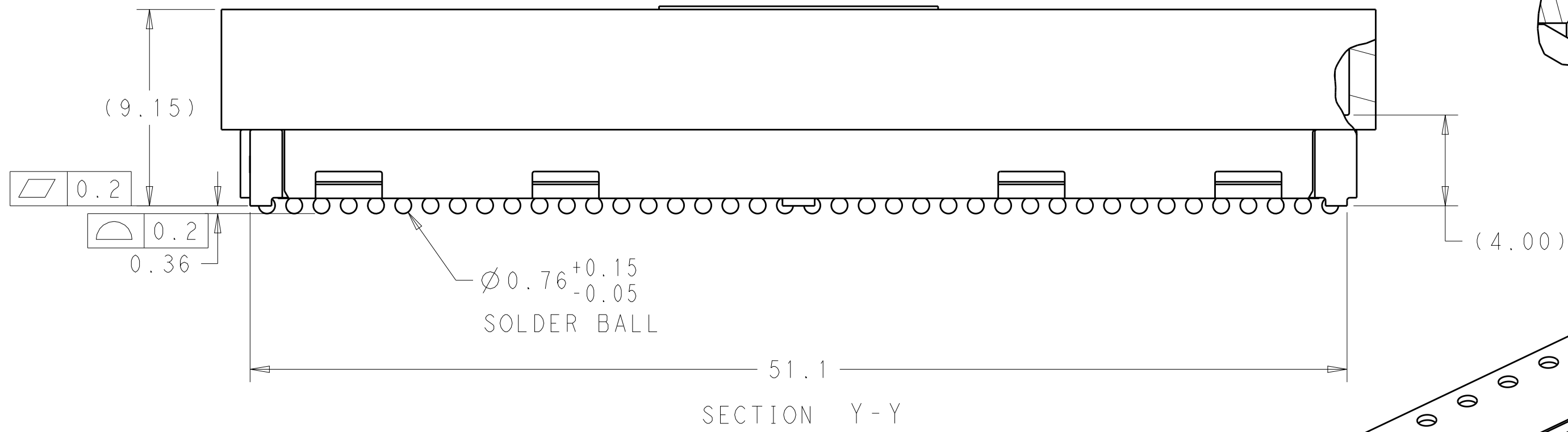
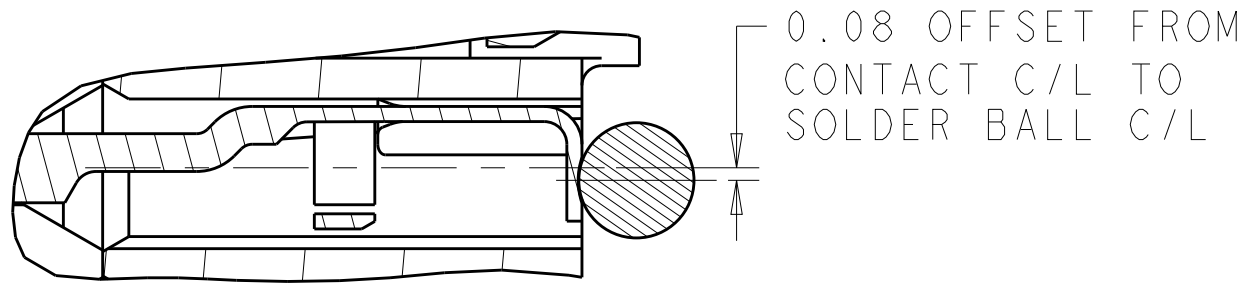
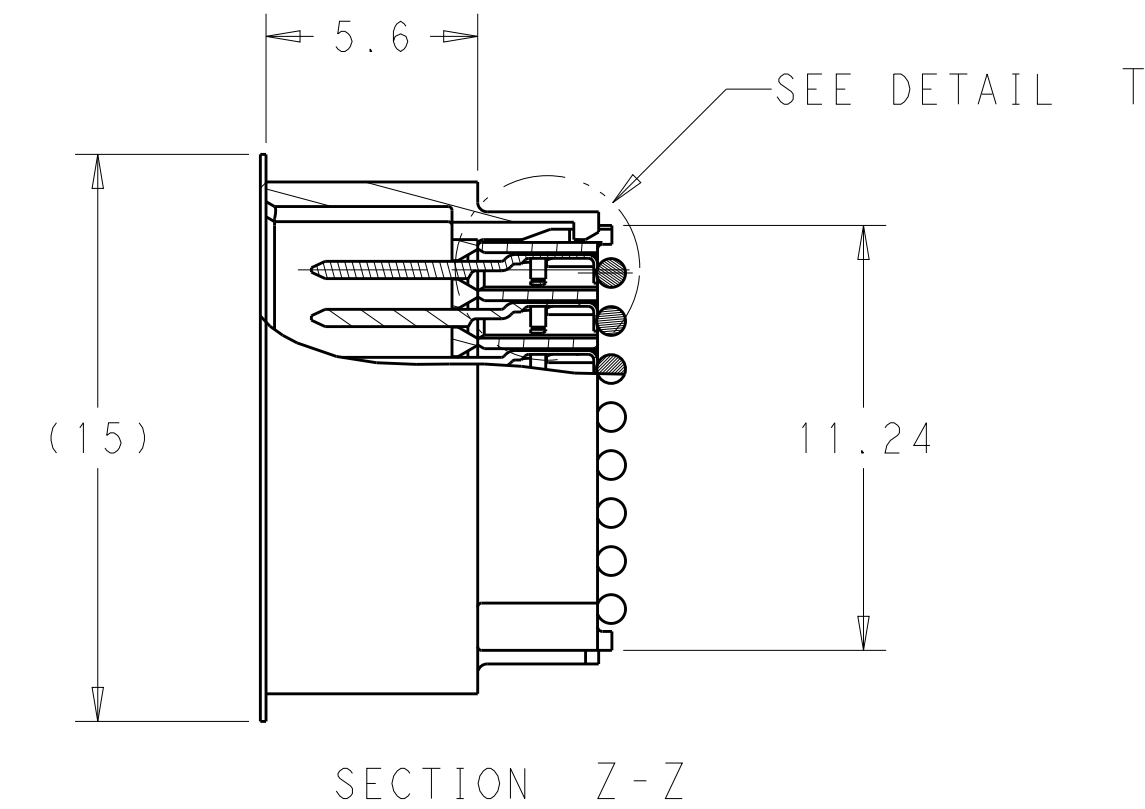
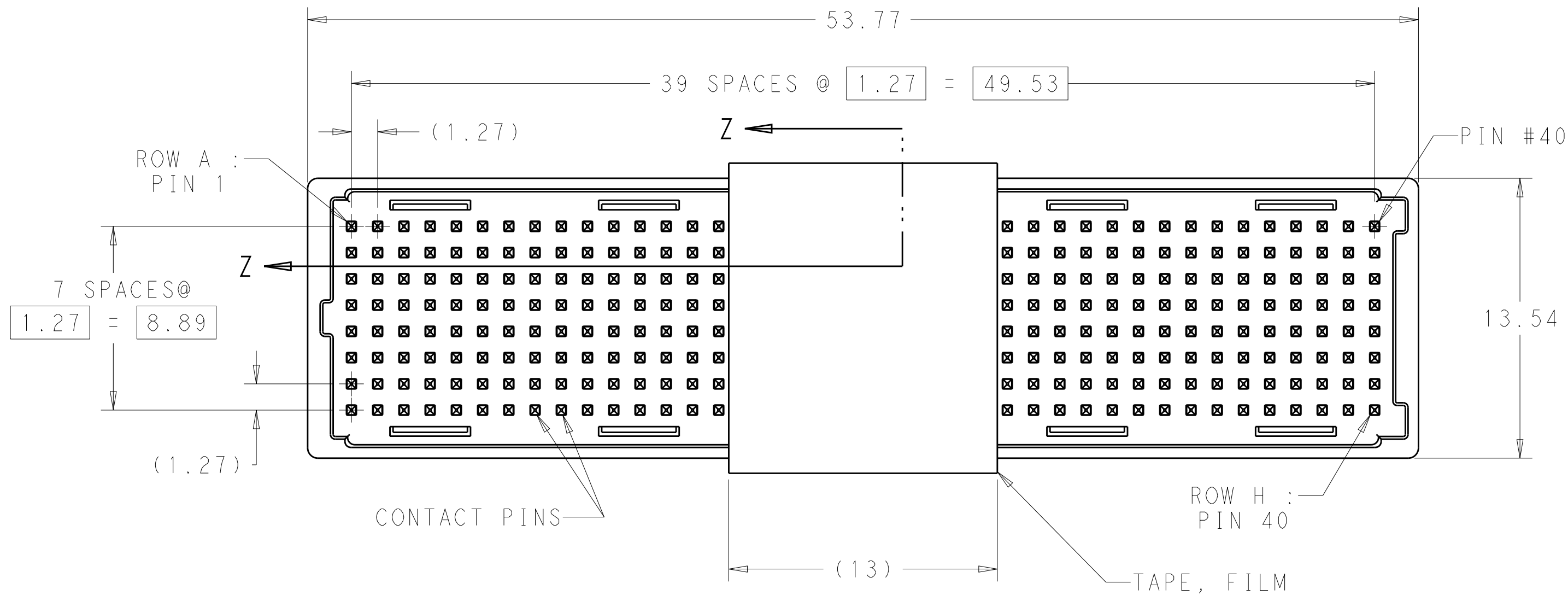
REVISIONS					
P	LTR	DESCRIPTION	DATE	DWN	APVD
	C	REV PER ECO 18-010457	7-24-18	CT	CJ



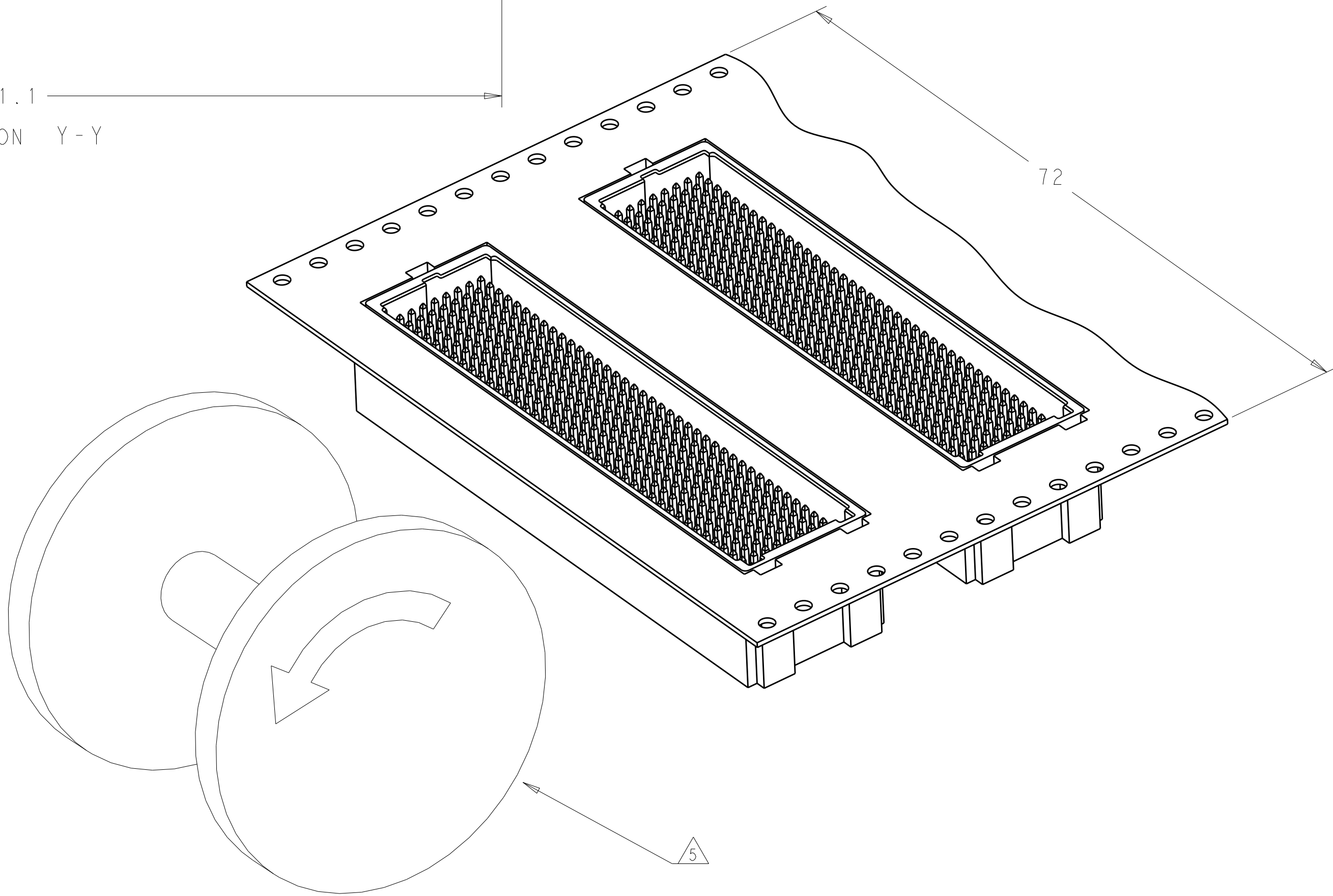
ASSEMBLY PART NUMBER,
DATE CODE &
COUNTRY OF ORIGIN MARKED
IN THIS AREA



A1 INDICATOR
MARKED APPROX
AS SHOWN



PCB LAYOUT (CONNECTOR SIDE)



	1-2102430-2	1-2102430-6	2102430-8	2102430-6	0.76 µm	LEAD FREE PER SAC405	2102429-4
SUPERSEDED BY 2102429-1	1-2102430-1	1-2102430-5	2102430-7	2102430-5	0.76 µm	TIN LEAD	2102429-3
SUPERSEDED BY 2102429-4	1-2102430-0	1-2102430-4	2102430-4	2102430-2	1.27 µm	LEAD FREE PER SAC405	2102429-2
	2102430-9	1-2102430-3	2102430-3	2102430-1	1.27 µm	TIN LEAD	2102429-1
	18mm STACK MATING CONNECTOR	15mm STACK MATING CONNECTOR	12mm STACK MATING CONNECTOR	10mm STACK MATING CONNECTOR	GOLD PLATING THICKNESS	SOLDER BALL MATERIAL	PART NUMBER

THIS DRAWING IS A CONTROLLED DOCUMENT.		DWN: MCKIBBEN, JOHN 18 JUL 2012	TE Connectivity	
DIMENSIONS: mm		CHK: DOWHOWER, KENNETH		
TOLERANCES UNLESS OTHERWISE SPECIFIED:		APVD:	NAME: ASSEMBLY, PIN HOUSING XMC MEZZANINE 320 POSITION	
0 PLC ±0.5		PRODUCT SPEC 108-2411		
1 PLC ±0.13		APPLICATION SPEC 114-132776	SIZE: A1	
2 PLC ±0.013		WEIGHT:		
3 PLC ±0.001		CUSTOMER DRAWING	SCALE: 3:1	
4 PLC ±0.0001				
ANGLES FINISH			SHEET 1 OF 1	
MATERIAL				
			REV C	

Mouser Electronics

Authorized Distributor

Click to View Pricing, Inventory, Delivery & Lifecycle Information:

[TE Connectivity:](#)

[2102429-1](#)