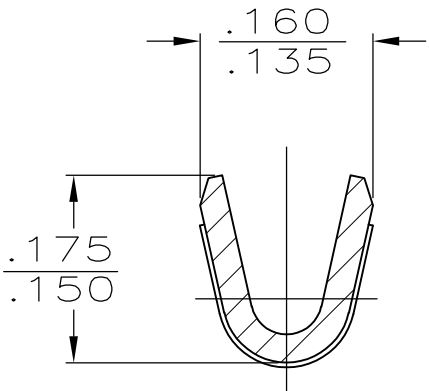
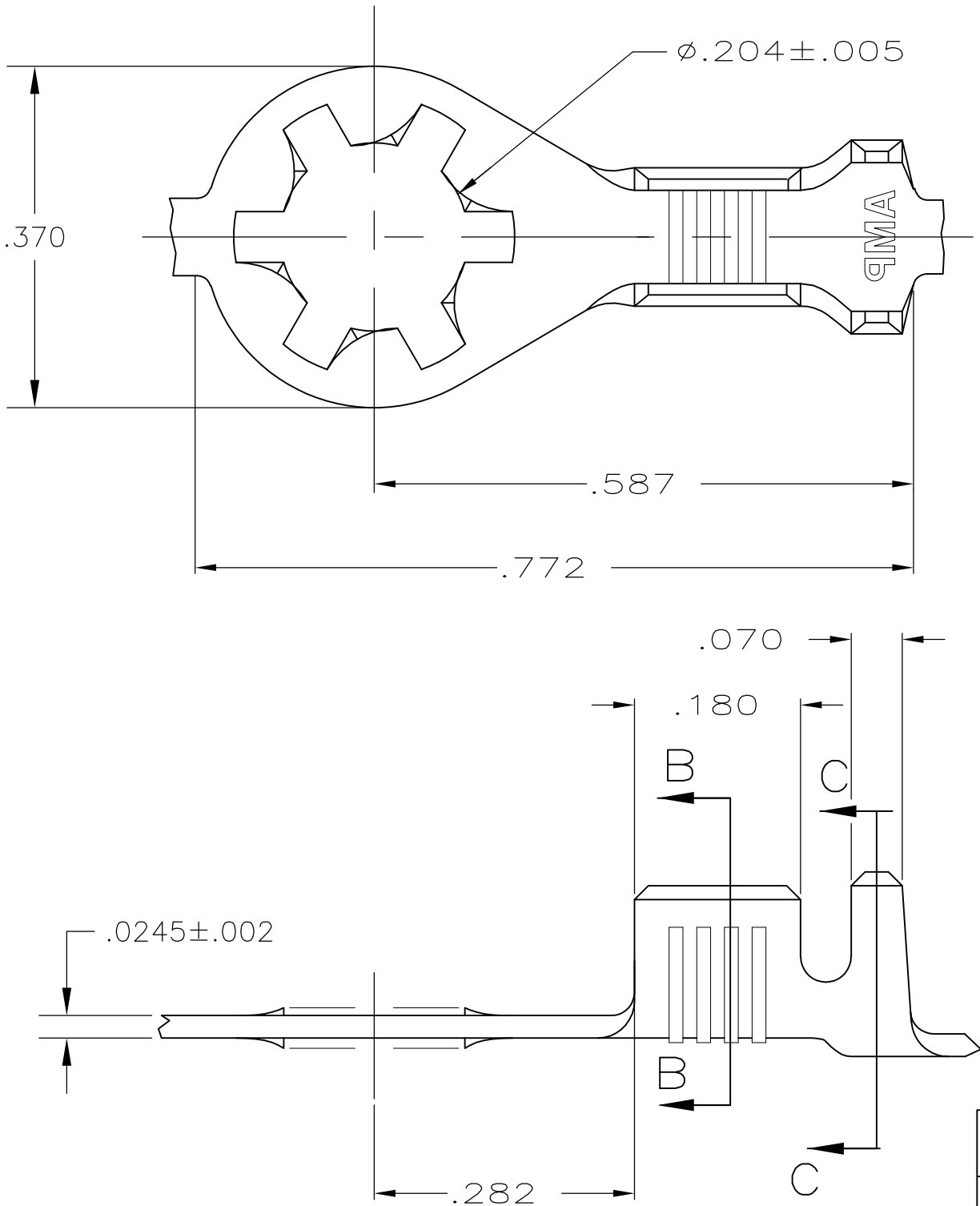
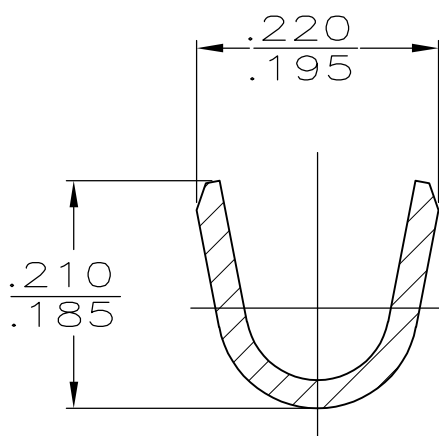


2		1					
LOC	DIST	REVISIONS					
AF	50	P	LTR	DESCRIPTION	DATE	DWN	APVD
			E1	REVISED PER ECO 11-008228	19APR11	JR	PD

- 1
- CONTINUOUS STRIP ON REELS
- 2
- .000080 MIN TIN PER MIL—T—10727
- 3
- WIRE SIZE IS #18—#14 AWG
- 4
- INSULATION RANGE IS .105—.145 DIA



SECTION B—B



SECTION C—C

OBSOLETE	2	CR STEEL	350436-2
	2	CR STEEL	350436-1
	FINISH	MATERIAL	PART NO.

THIS DRAWING IS A CONTROLLED DOCUMENT.		DWN RAGHAVENDRA 25SEP2007	TE Connectivity			
		CHK D DECKER 25SEP2007				
DIMENSIONS: INCHES	TOLERANCES UNLESS OTHERWISE SPECIFIED:	APVD D DECKER 25SEP2007	NAME			
		PRODUCT SPEC	RING			
	0 PLC ± — 1 PLC ± — 2 PLC ± — 3 PLC ± .015 4 PLC ± — ANGLES ± —	APPLICATION SPEC	RESTRICTED TO			
		—	—			
MATERIAL	FINISH	WEIGHT	SIZE	CAGE CODE	DRAWING NO	
SEE TABLE	SEE TABLE	—	A3	00779	C-350436	
CUSTOMER DRAWING			SCALE	SHEET	REV	
			6:1	1 OF 1	E1	

Mouser Electronics

Authorized Distributor

Click to View Pricing, Inventory, Delivery & Lifecycle Information:

[TE Connectivity:](#)

[350436-2](#) [350436-2 \(CUT STRIP\)](#) [350436-2 \(MOUSER REEL\)](#)