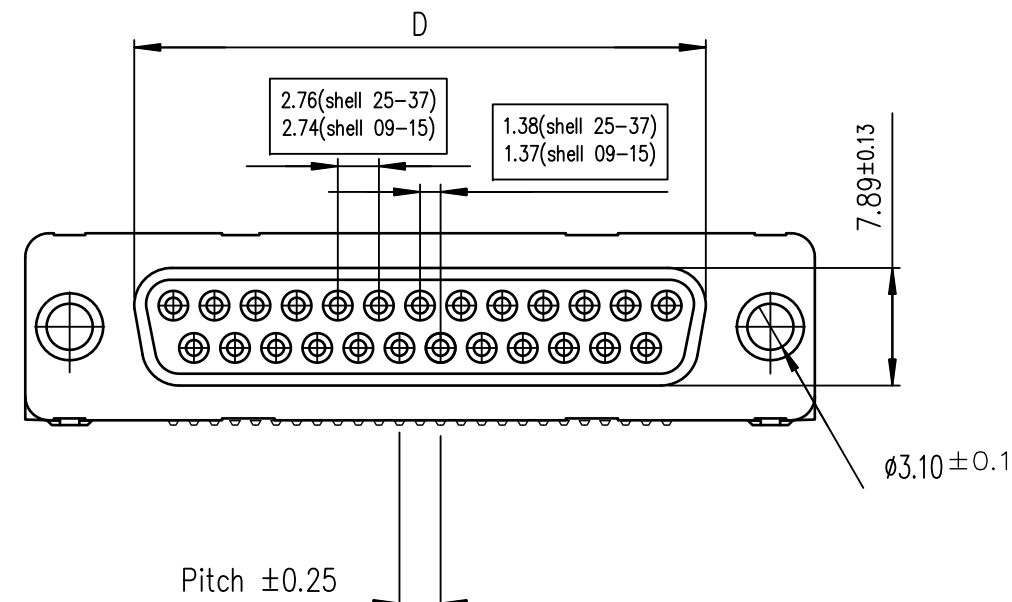
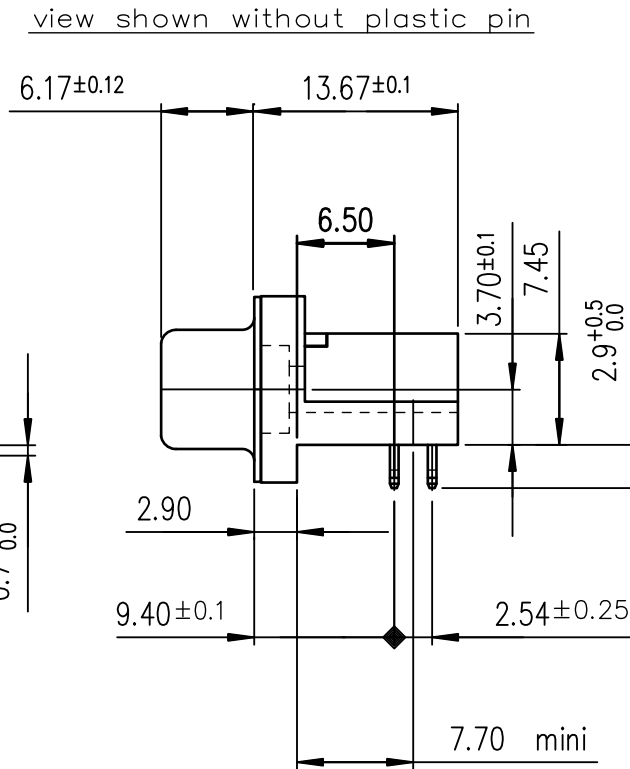
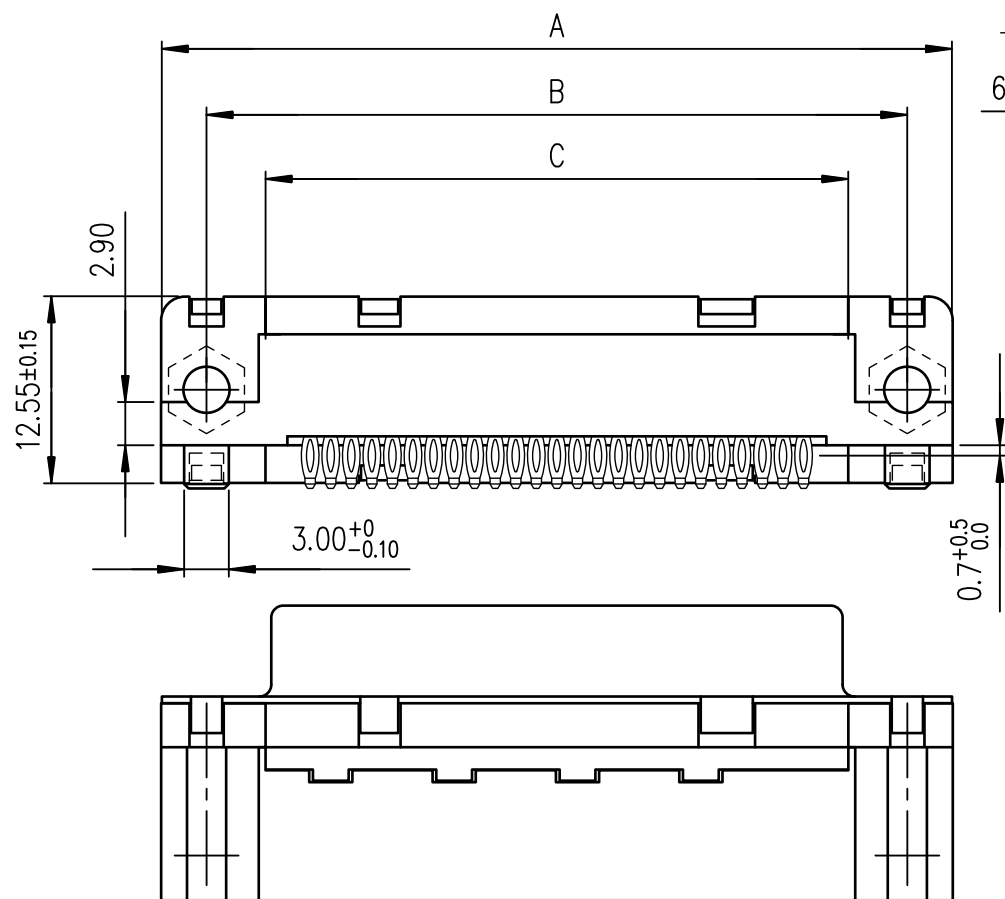


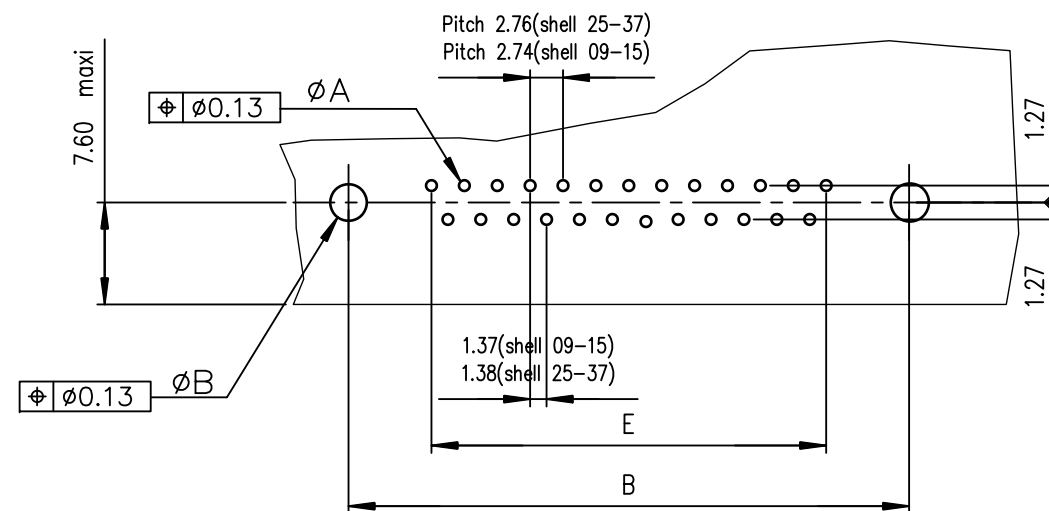


FCIconnect.com

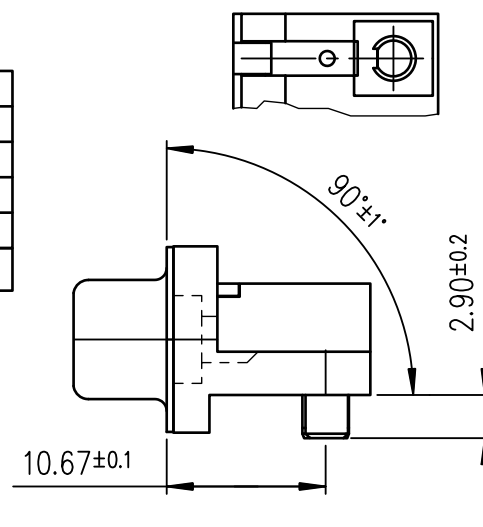
Copyright FCI



PC card drilling dimensions(after plating)
(thickness 1.60 or 2.40±0.20mm)



Detail of integral plastic pin



TIN LEAD PART NUMBER

SHELL	A±0.38	B±0.12	C±0.10	D±0.25	E±0.07	PART NUMBER	PART NUMBER
09	30.81	24.99	18.00	16.21	10.96	D09S82C4PA00	D09S82C6PA00
15	39.14	33.32	26.32	24.54	19.18	D15S82C4PA00	D15S82C6PA00
25	53.03	47.04	40.04	38.25	33.12	D25S82C4PA00	D25S82C6PA00
37	69.32	63.50	56.50	54.71	49.68	D37S82C4PA00	D37S82C6PA00
Gold flash						0.76 µ gold	

LEAD FREE PART NUMBER

SHELL	A±0.38	B±0.12	C±0.10	D±0.25	E±0.07	PART NUMBER	PART NUMBER
09	30.81	24.99	18.00	16.21	10.96	D09S82C4PA00LF	D09S82C6PA00LF
15	39.14	33.32	26.32	24.54	19.18	D15S82C4PA00LF	D15S82C6PA00LF
25	53.03	47.04	40.04	38.25	33.12	D25S82C4PA00LF	D25S82C6PA00LF
37	69.32	63.50	56.50	54.71	49.68	D37S82C4PA00LF	D37S82C6PA00LF
Gold flash						0.76 µ gold	

GENERAL CHARACTERISTICS AND ROHS INFORMATIONS:

SEE DRAWING C01-8646-0001

mat'l. code				surface	tolerance	projection	product family		
-				ISO 1302	ISO 406 ISO 1101		D-SUB		
ltr	ecn no	dr	date	tolerances unless otherwise specified		MM	title		
M	ELX-I-18050	MP	2014/06/23	angles	linear				
				0°±2°					
				dr	PESSON	1994/02/01	dwg no		sheet 1 of 1
				engr	MITHUN PAUL	2014/06/23			
				chr	ALIAS BABU	2014/06/23			
				appd	BIJU K PAUL	2014/06/23	type		Product Customer Drawing
sheet	revision	M							
index	sheet	1							



Mouser Electronics

Authorized Distributor

Click to View Pricing, Inventory, Delivery & Lifecycle Information:

[FCI / Amphenol:](#)

[D25S82C6PA00LF](#) [D09S82C6PA00LF](#) [D15S82C6PA00LF](#) [D25S82C6PA00](#) [D09S82C4PA00LF](#)