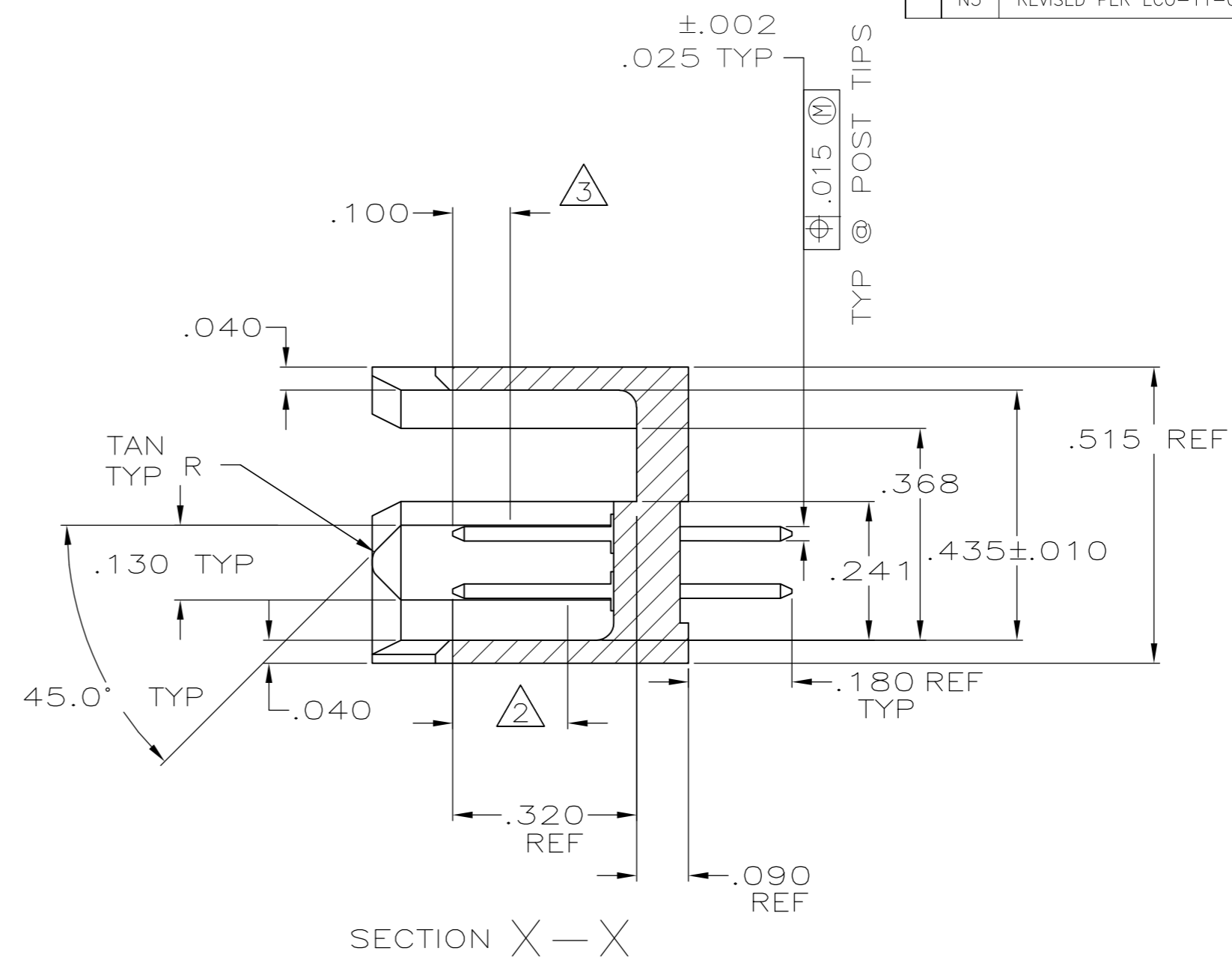
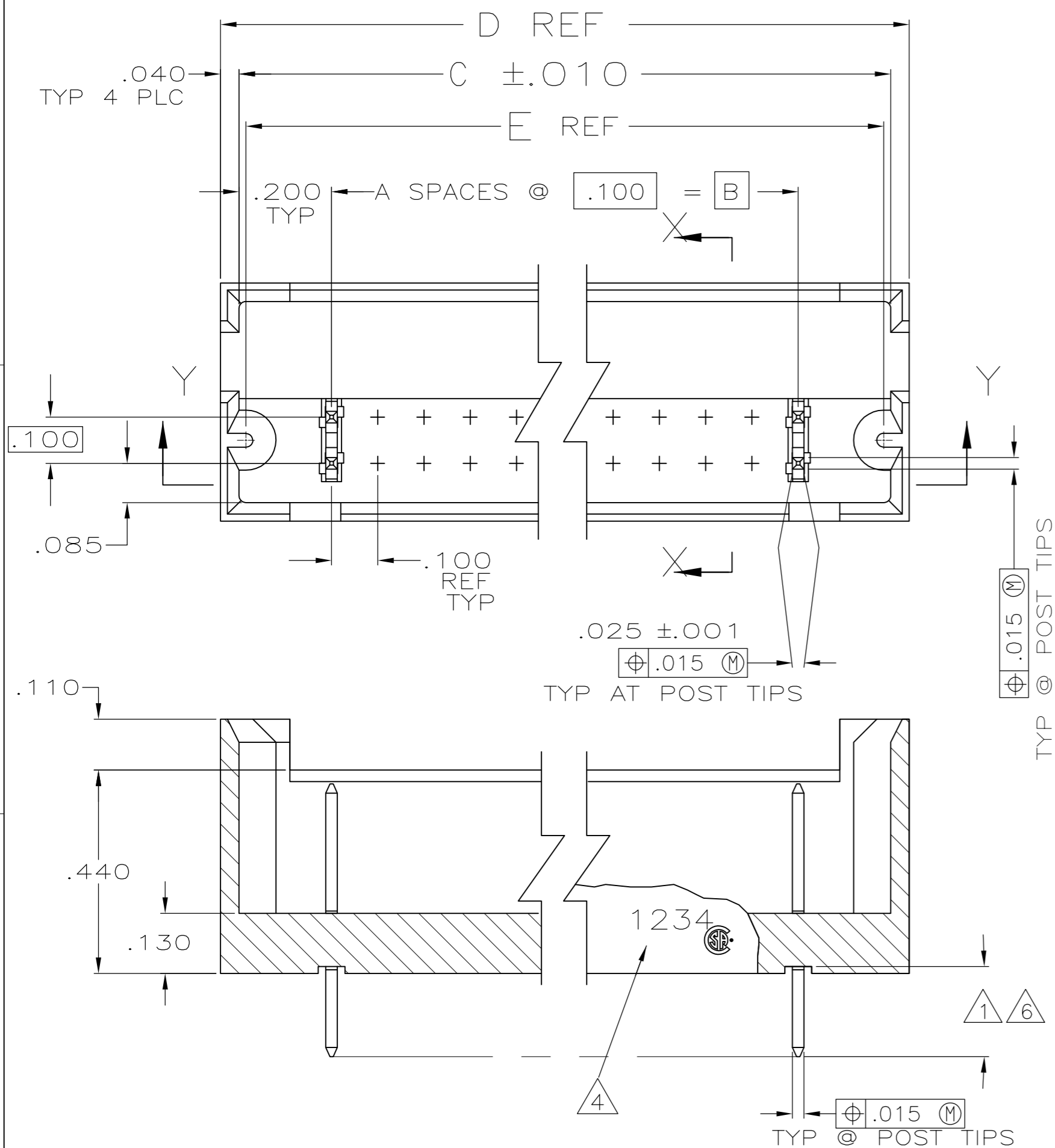
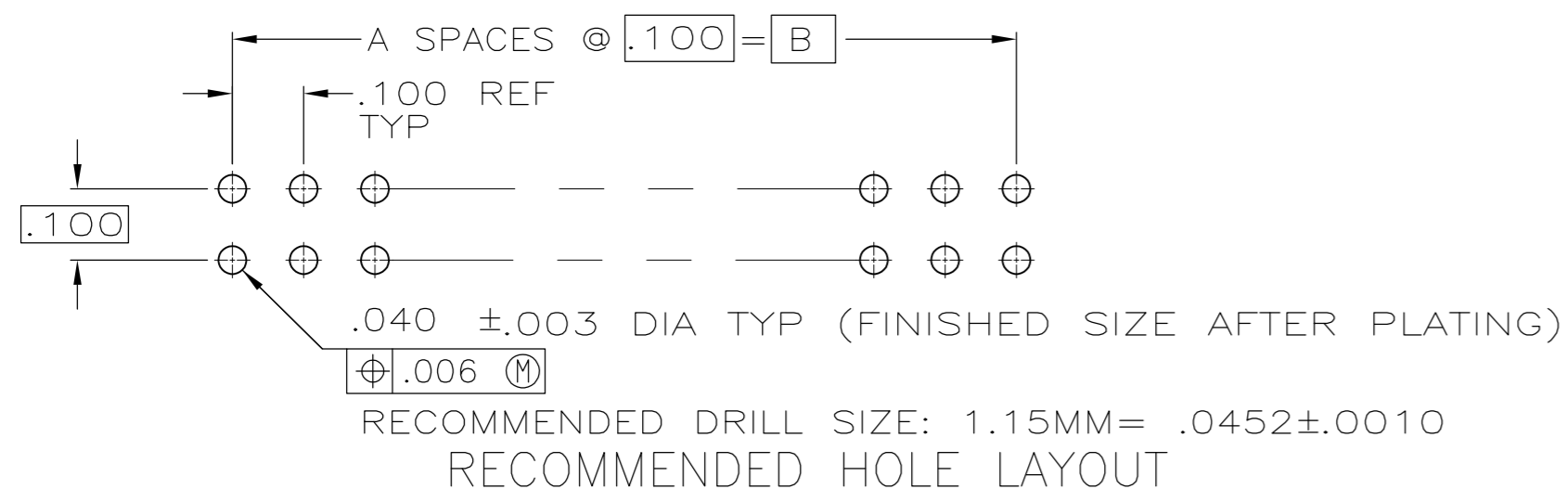





LOC	DIST	REVISIONS					
AD	00	P	LTR	DESCRIPTION	DATE	DWN	APVD
			N5	REVISED PER ECO-11-004587	11MAR11	RK	HMR



- ① FINISH OVER INDICATED AREA: .000100—.000200
BRIGHT TIN LEAD OVER .000050 NICKEL.
- ② FINISH OVER INDICATED AREA: .000015
GOLD OVER .000050 NICKEL.
- ③ POINT OF MEASUREMENT FOR PLATING THICKNESS.
- ④ RECESSED DATE CODE AND CSA LOGO.
- ⑤ OBSOLETE PART NUMBER.
- ⑥ FINISH OVER INDICATED AREA: .000100—.000200
MATTE TIN OVER .000050 NICKEL.
- ⑦ PRELIMINARY PART.
- ⑧ ROHS 2002/95/EC COMPLIANT
- ⑨ HEADER: GLASS—FILLED, FLAME RETARDANT
THERMOPLASTIC COLOR: BLACK
POST: COPPER ALLOY
- ⑩ OBSOLETE PARTS: OBSOLETE CIS STREAMLINING PER D.RENAUD/D.SINISI



THIS DRAWING IS A CONTROLLED DOCUMENT.		DWN B. HAYMAKER 30MAR00 CHK J. GESFORD 30MAR00		 TE Connectivity	
DIMENSIONS: mm		TOLERANCES UNLESS OTHERWISE SPECIFIED: 0 PLC ± - 1 PLC ± - 2 PLC ± - 3 PLC ± .005 4 PLC ± - ANGLES ± ± -		NAME J. GESFORD PRODUCT SPEC APPLICATION SPEC HEADER ASSEMBLY, MOD II, .100 X .100CL	
		MATERIAL 		SIZE CAGE CODE DRAWING NO RESTRICTED TO	
FINISH SEE NOTES		WEIGHT -		A2 00779 C-102567 -	
CUSTOMER DRAWING				SCALE 4:1	SHEET 1 OF 2
				REV N5	

THIS DRAWING IS UNPUBLISHED.

RELEASED FOR PUBLICATION

© COPYRIGHT - By -

ALL RIGHTS RESERVED.

LOC	DIST	REVISIONS					
		P	LTR	DESCRIPTION	DATE	DWN	APVD
AD	00		—	SEE SHEET 1	—	—	—

D

D

C

C

B

B

A

A

<div><div><div>5</div></div><div>10</div></div> OBSOLETE	<div><div>8</div></div> 7-102567-9	1.870	1.980	1.900	1.500	15	32	<div><div>8</div></div> 7-102567-8
	<div><div>8</div></div> 7-102567-7	9.270	9.380	9.300	8.900	89	180	<div><div>8</div></div> 7-102567-6
	<div><div>8</div></div> 7-102567-5	7.670	7.780	7.700	7.300	73	148	<div><div>8</div></div> 7-102567-4
	<div><div>8</div></div> 7-102567-3	6.670	6.780	6.700	6.300	63	128	<div><div>8</div></div> 7-102567-2
	<div><div>8</div></div> 7-102567-1	4.970	5.080	5.000	4.600	46	94	<div><div>8</div></div> 7-102567-0
	<div><div>8</div></div> 6-102567-9	2.470	2.580	2.500	2.100	21	44	<div><div>8</div></div> 6-102567-8
	<div><div>8</div></div> 6-102567-7	.970	1.080	1.000	.600	6	14	<div><div>8</div></div> 6-102567-6
	<div><div>8</div></div> 6-102567-5	8.270	8.380	8.300	7.900	79	160	<div><div>8</div></div> 6-102567-4
	<div><div>8</div></div> 6-102567-3	10.270	10.380	10.300	9.900	99	200	<div><div>8</div></div> 6-102567-2
	<div><div>8</div></div> 6-102567-1	7.270	7.380	7.300	6.900	69	140	<div><div>8</div></div> 6-102567-0
<div><div><div>5</div></div><div>10</div></div> OBSOLETE	<div><div>8</div></div> 6-102567-9	6.770	6.880	6.800	6.400	64	130	<div><div>8</div></div> 6-102567-8
	<div><div>8</div></div> 6-102567-7	1.070	1.180	1.100	.700	7	16	<div><div>8</div></div> 6-102567-6
	<div><div>8</div></div> 6-102567-5	4.570	4.680	4.600	4.200	42	86	<div><div>8</div></div> 6-102567-4
	<div><div>8</div></div> 6-102567-3	3.870	3.980	3.900	3.500	35	72	<div><div>8</div></div> 6-102567-2
	<div><div>8</div></div> 6-102567-1	5.770	5.880	5.800	5.400	54	110	<div><div>8</div></div> 6-102567-0
	<div><div>8</div></div> 5-102567-9	4.770	4.880	4.800	4.400	44	90	<div><div>8</div></div> 5-102567-8
	<div><div>8</div></div> 5-102567-7	1.770	1.880	1.800	1.400	14	30	<div><div>8</div></div> 5-102567-6
	<div><div>8</div></div> 5-102567-5	2.270	2.380	2.300	1.900	19	40	<div><div>8</div></div> 5-102567-4
	<div><div>8</div></div> 5-102567-3	1.270	1.380	1.300	.900	9	20	<div><div>8</div></div> 5-102567-2
	<div><div>8</div></div> 5-102567-1	3.770	3.880	3.800	3.400	34	70	<div><div>8</div></div> 5-102567-0
<div><div><div>5</div></div><div>10</div></div> OBSOLETE	<div><div>8</div></div> 5-102567-9	5.270	5.380	5.300	4.900	49	100	<div><div>8</div></div> 5-102567-8
	<div><div>8</div></div> 5-102567-7	4.270	4.380	4.300	3.900	39	80	<div><div>8</div></div> 5-102567-6
	<div><div>8</div></div> 5-102567-5	6.270	6.380	6.300	5.900	59	120	<div><div>8</div></div> 5-102567-4
	<div><div>8</div></div> 5-102567-3	2.770	2.880	2.800	2.400	24	50	<div><div>8</div></div> 5-102567-2
	<div><div>8</div></div> 5-102567-1	5.070	5.180	5.100	4.700	47	96	<div><div>8</div></div> 5-102567-0
	<div><div>8</div></div> 5-102567-9	3.270	3.380	3.300	2.900	29	60	<div><div>8</div></div> 5-102567-8
	<div><div>8</div></div> 5-102567-7	2.070	2.180	2.100	1.700	17	36	<div><div>8</div></div> 5-102567-6
	<div><div>8</div></div> 5-102567-5	1.470	1.580	1.500	1.100	11	24	<div><div>8</div></div> 5-102567-4
	<div><div>8</div></div> 5-102567-3	.870	.980	.900	.500	5	12	<div><div>8</div></div> 5-102567-2
	<div><div>8</div></div> 5-102567-1							<div><div>8</div></div> 5-102567-0
FINISH		E	D	C	B	A	NO. OF POSN	PART NUMBER

SUPERSEDED BY 5-102567-1	<div><div>2</div></div> <div>6</div>	.870	.980	.900	.500	5	12	3-102567-0
<div><div>8</div></div> 7-102567-9	<div><div>10</div></div> OBSOLETE	1.870	1.980	1.900	1.500	15	32	<div><div>8</div></div> 7-102567-8
<div><div>8</div></div> 7-102567-7	<div><div>10</div></div> OBSOLETE	9.270	9.380	9.300	8.900	89	180	<div><div>8</div></div> 7-102567-6
<div><div>8</div></div> 7-102567-5	<div><div>10</div></div> OBSOLETE	7.670	7.780	7.700	7.300	73	148	<div><div>8</div></div> 7-102567-4
<div><div>8</div></div> 7-102567-3	<div><div>10</div></div> OBSOLETE	6.670	6.780	6.700	6.300	63	128	<div><div>8</div></div> 7-102567-2
<div><div>8</div></div> 7-102567-1	<div><div>10</div></div> OBSOLETE	4.970	5.080	5.000	4.600	46	94	<div><div>8</div></div> 7-102567-0
<div><div>8</div></div> 6-102567-9	<div><div>10</div></div> OBSOLETE	2.470	2.580	2.500	2.100	21	44	<div><div>8</div></div> 6-102567-8
<div><div>8</div></div> 6-102567-7	<div><div>10</div></div> OBSOLETE	.970	1.080	1.000	.600	6	14	<div><div>8</div></div> 6-102567-6
<div><div>8</div></div> 6-102567-5	<div><div>10</div></div> OBSOLETE	8.270	8.380	8.300	7.900	79	160	<div><div>8</div></div> 6-102567-4
<div><div>8</div></div> 6-102567-3	<div><div>10</div></div> OBSOLETE	10.270	10.380	10.300	9.900	99	200	<div><div>8</div></div> 6-102567-2
<div><div>8</div></div> 6-102567-1	<div><div>10</div></div> OBSOLETE	7.270	7.380	7.300	6.900	69	140	<div><div>8</div></div> 6-102567-0
<div><div>8</div></div> 6-102567-9	<div><div>10</div></div> OBSOLETE	6.770	6.880	6.800	6.400	64	130	<div><div>8</div></div> 6-102567-8
<div><div>8</div></div> 6-102567-7	<div><div>10</div></div> OBSOLETE	1.070	1.180	1.100	.700	7	16	<div><div>8</div></div> 6-102567-6
<div><div>8</div></div> 6-102567-5	<div><div>10</div></div> OBSOLETE	4.570	4.680	4.600	4.200	42	86	<div><div>8</div></div> 6-102567-4
<div><div>8</div></div> 6-102567-3	<div><div>10</div></div> OBSOLETE	3.870	3.980	3.900	3.500	35	72	<div><div>8</div></div> 6-102567-2
<div><div>8</div></div> 6-102567-1	<div><div>10</div></div> OBSOLETE	5.770	5.880	5.800	5.400	54	110	<div><div>8</div></div> 6-102567-0
<div><div>8</div></div> 5-102567-9	<div><div>10</div></div> OBSOLETE	4.770	4.880	4.800	4.400	44	90	<div><div>8</div></div> 5-102567-8
<div><div>8</div></div> 5-102567-7	<div><div>10</div></div> OBSOLETE	1.770	1.880	1.800	1.400	14	30	<div><div>8</div></div> 5-102567-6
<div><div>8</div></div> 5-102567-5	<div><div>10</div></div> OBSOLETE	2.270	2.380	2.300	1.900	19	40	<div><div>8</div></div> 5-102567-4
<div><div>8</div></div> 5-102567-3	<div><div>10</div></div> OBSOLETE	1.270	1.380	1.300	.900	9	20	<div><div>8</div></div> 5-102567-2
<div><div>8</div></div> 5-102567-1	<div><div>10</div></div> OBSOLETE	3.770	3.880	3.800	3.400	34	70	<div><div>8</div></div> 5-102567-0
<div><div>8</div></div> 5-102567-9	<div><div>10</div></div> OBSOLETE	5.270	5.380	5.300	4.900	49	100	<div><div>8</div></div> 5-102567-8
<div><div>8</div></div> 5-102567-7	<div><div>10</div></div> OBSOLETE	4.270	4.380	4.300	3.900	39	80	<div><div>8</div></div> 5-102567-6
<div><div>8</div></div> 5-102567-5	<div><div>10</div></div> OBSOLETE	6.270	6.380	6.300	5.900	59	120	<div><div>8</div></div> 5-102567-4
<div><div>8</div></div> 5-102567-3	<div><div>10</div></div> OBSOLETE	2.770	2.880	2.800	2.400	24	50	<div><div>8</div></div> 5-102567-2
<div><div>8</div></div> 5-102567-1	<div><div>10</div></div> OBSOLETE	5.070	5.180	5.100	4.700	47	96	<div><div>8</div></div> 5-102567-0
<div><div>8</div></div> 5-102567-9	<div><div>10</div></div> OBSOLETE	3.270	3.380	3.300	2.900	29	60	<div><div>8</div></div> 5-102567-8
<div><div>8</div></div> 5-102567-7	<div><div>10</div></div> OBSOLETE	2.070	2.180	2.100	1.700	17	36	<div><div>8</div></div> 5-102567-6
<div><div>8</div></div> 5-102567-5	<div><div>10</div></div> OBSOLETE	1.470	1.580	1.500	1.100	11	24	<div><div>8</div></div> 5-102567-4
<div><div>8</div></div> 5-102567-3	<div><div>10</div></div> OBSOLETE	.870	.980	.900	.500	5	12	<div><div>8</div></div> 5-102567-2
<div><div>8</div></div> 5-102567-1	<div><div>10</div></div> OBSOLETE							<div><div>8</div></div> 5-102567-0
FINISH		E	D	C	B	A	NO. OF POSN	PART NUMBER

THIS DRAWING IS A CONTROLLED DOCUMENT.		DWN B. HAYMAKER 30MAR00	<div><div>TE</div>TE Connectivity</div>			
DIMENSIONS: mm		CHK J. GESFORD 30MAR00				
<div><div><div></div></div></div>		APVD J. GESFORD 30MAR00	NAME HEADER ASSEMBLY, MOD II, .100 X .100CL			
		PRODUCT SPEC				
MATERIAL -		APPLICATION SPEC	SIZE A2	CAGE CODE 00779	DRAWING NO C=102567	RESTRICTED TO -
		WEIGHT -	SCALE 4:1		SHEET 2 of 2	REV N5
CUSTOMER DRAWING						

Mouser Electronics

Authorized Distributor

Click to View Pricing, Inventory, Delivery & Lifecycle Information:

[TE Connectivity:](#)

[1-102567-3](#)