

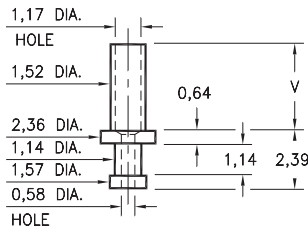
# MALE PCB PINS

## SOLDER TERMINAL TURRETS

### 2312

2312-X-00-XX-00-00-07-0

Swage mount in 1,63 hole

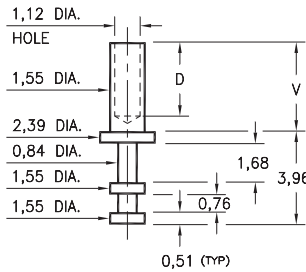


Basic Part Number	Board Thickness	Length V
2312-1	0,79	1,35
2312-2	1,57	2,39
2312-3	2,39	2,92
2312-4	3,18	3,73

### 2308

2308-X-00-XX-00-00-07-0

Swage mount in 1,63 hole

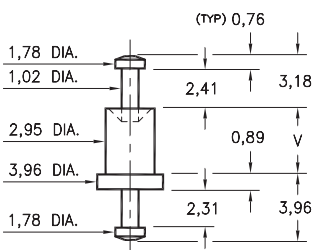


Basic Part Number	Board Thickness	Length V	Depth D
2308-1	0,79	1,37	0,91
2308-2	1,57	2,13	1,68
2308-3	2,39	2,92	2,44
2308-4	3,18	3,73	3,20

### 2707

2707-X-00-XX-00-00-07-0

Swage mount in 3,05 hole

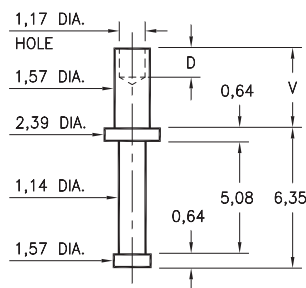


Basic Part Number	Board Thickness	Length V
2707-1	0,79	1,57
2707-2	1,57	2,39
2707-3	2,39	3,18
2707-4	3,18	3,96

### 2329

2329-X-00-XX-00-00-07-0

Swage mount in 1,70 hole

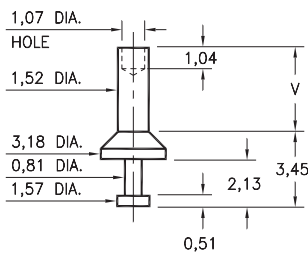


Basic Part Number	Board Thickness	Length V	Depth D
2329-1	0,79	1,14	1,14
2329-2	1,57	2,39	1,57
2329-3	2,39	3,18	1,57
2329-4	3,18	3,96	1,57

### 2510

2510-X-00-XX-00-00-07-0

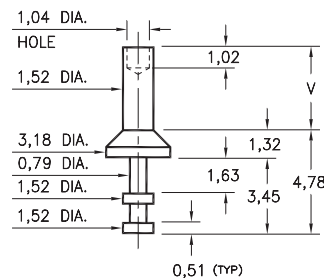
Swage mount in 1,63 hole



### 2513

2513-X-00-XX-00-00-07-0

Swage mount in 1,63 hole



Basic Part Number	Board Thickness	Length V
251X-1	0,79	1,57
251X-2	1,57	2,39
251X-3	2,39	3,18
251X-4	3,18	3,96

#### SPECIFICATIONS:

**Pin Material:** Brass Alloy 360, 1/2 Hard  
(Swage pins are annealed)

**Dimensions:** Millimeters

**Tolerances On:** Lengths:  $\pm 0,13$   
Diameters:  $\pm 0,051$   
Angles:  $\pm 2^\circ$



ORDER CODE: XXXX - X - 00 - XX - 00 - 00 - 07 - 0

BASIC PART #

SPECIFY PIN FINISH:

- 01 5,08 $\mu$ m TIN/LEAD OVER NICKEL
- ◆ 80 5,08 $\mu$ m TIN OVER NICKEL (RoHS)
- ◆ 44 7,62 $\mu$ m SILVER OVER COPPER (RoHS)
- 50 7,62 $\mu$ m ELECTRO-SOLDER  
(60/40 SnPb)



# Mouser Electronics

Authorized Distributor

Click to View Pricing, Inventory, Delivery & Lifecycle Information:

[Mill-Max:](#)

[2308-1-00-50-00-00-07-0](#) [2308-2-00-80-00-00-07-0](#)