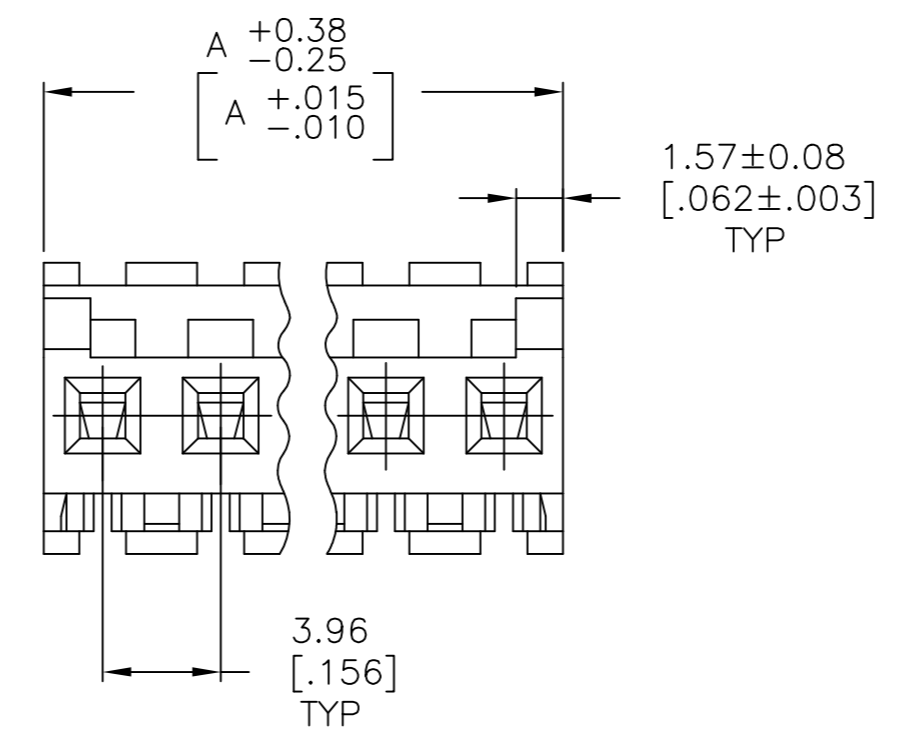
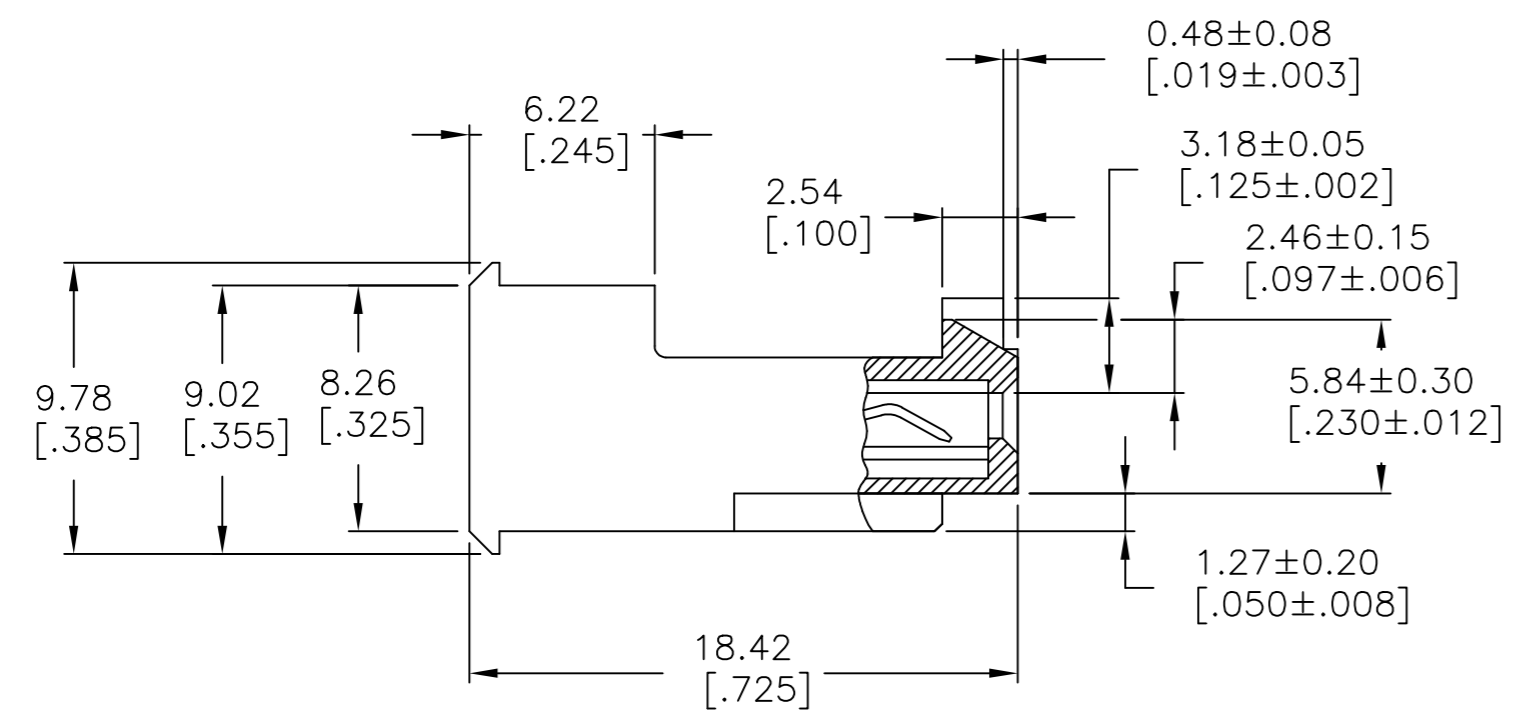
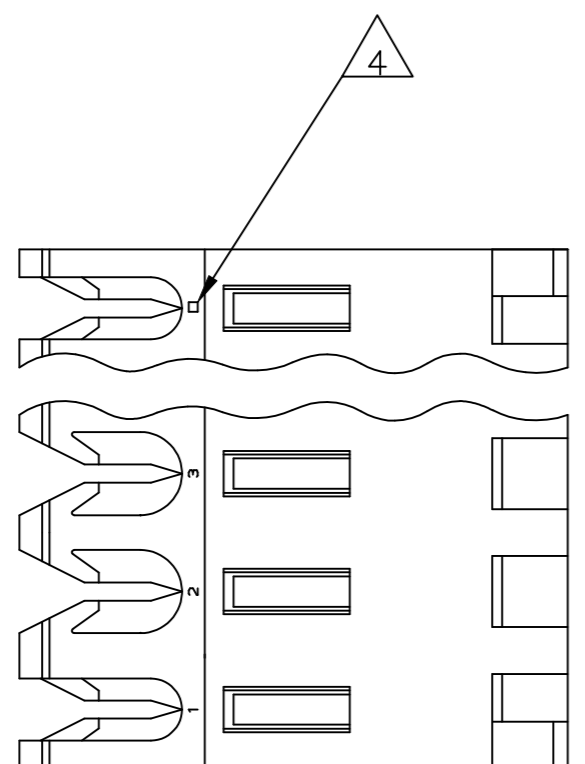


THIS DRAWING IS UNPUBLISHED. RELEASED FOR PUBLICATION
 © COPYRIGHT - TE Connectivity Ltd. ALL RIGHTS RESERVED.

REVISIONS					
P	LTR	DESCRIPTION	DATE	DWN	APVD
	D2	REVISED PER ECR-17-018209	16MAY2018	BDA	SG



55.47	[2.184]	14	4-644468-4
51.51	[2.028]	13	4-644468-3
47.55	[1.872]	12	4-644468-2
43.59	[1.716]	11	4-644468-1
39.62	[1.560]	10	4-644468-0
35.66	[1.404]	9	3-644468-9
31.70	[1.248]	8	3-644468-8
27.74	[1.092]	7	3-644468-7
23.77	[.936]	6	3-644468-6
19.81	[.780]	5	3-644468-5
15.85	[.624]	4	3-644468-4
11.89	[.468]	3	3-644468-3
7.92	[.312]	2	3-644468-2

1 MATERIAL: CONNECTOR - NYLON UL94V-2 (WHITE).
 CONTACTS - 0.30[.012] THICK COPPER ALLOY
 BRIGHT TIN-LEAD 0.00203[.000080] MIN THICK
 FOR CONTACTS 644468-2 THRU 1-644468-4
 MATTE WHISKER MITIGATED TIN 0.00203[.000080] MIN
 THICKNESS OVER NICKEL UNDERPLATE FOR
 3-644468-2 THRU 4-644468-4

- 2. CONTACTS ACCEPT 24 AWG WIRE WITH 2.41[.095] MAX INSULATION DIAMETER.
- 3. CONTACTS MUST ACCEPT 1.14±0.03[.045±.001] SQUARE POST AND REMAIN LOCKED IN POSITION.
- 4 IDENTIFICATION NUMBER FOR LAST CIRCUIT MAY NOT APPEAR ON ALL ASSEMBLIES.
- 5. DIMENSIONS IN BRACKETS ARE IN INCHES.
- 6. HOUSING FEATURES ARE: FEED-THRU WITH LOCKING RAMP AND POLARIZING TAB.

7 OBSOLETE PARTS: OBSOLETE CIS STREAMLINING PER D.RENAUD/D.SINISI
 8 OBSOLETE PARTS

7	SUPERSEDED	55.47	[2.184]	14	1-644468-4
7	SUPERSEDED	51.51	[2.028]	13	1-644468-3
7	SUPERSEDED	47.55	[1.872]	12	1-644468-2
7	SUPERSEDED	43.59	[1.716]	11	1-644468-1
7	SUPERSEDED	39.62	[1.560]	10	1-644468-0
7	SUPERSEDED	35.66	[1.404]	9	644468-9
7	SUPERSEDED	31.70	[1.248]	8	644468-8
7	SUPERSEDED	27.74	[1.092]	7	644468-7
7	SUPERSEDED	23.77	[.936]	6	644468-6
7	SUPERSEDED	19.81	[.780]	5	644468-5
7	SUPERSEDED	15.85	[.624]	4	644468-4
8	SUPERSEDED	11.89	[.468]	3	644468-3
7	SUPERSEDED	7.92	[.312]	2	644468-2

DIM A	NO. OF CIRCUITS	PART NO
-------	-----------------	---------

THIS DRAWING IS A CONTROLLED DOCUMENT.		DWN B. LEWIS 12 FEB 91	TE Connectivity Ltd.	
DIMENSIONS: mm [INCHES]		CHK R. SWING 12 FEB 91		
TOLERANCES UNLESS OTHERWISE SPECIFIED:		APVD D. CLARK 20 FEB 91	NAME	
0 PLC ± -		PRODUCT SPEC		
1 PLC ± -		108-1051		
2 PLC ± -		APPLICATION SPEC		
3 PLC ± -		114-1020		
4 PLC ± -	MATERIAL	WEIGHT	SIZE	CAGE CODE
ANGLES ± -	FINISH		A2	00779
			DRAWING NO	
			C=644468	
			SCALE	SHEET
			4:1	1 of 1
			CUSTOMER DRAWING	REV
				D2