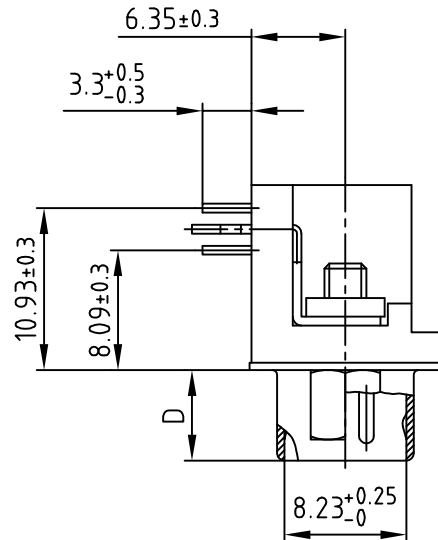
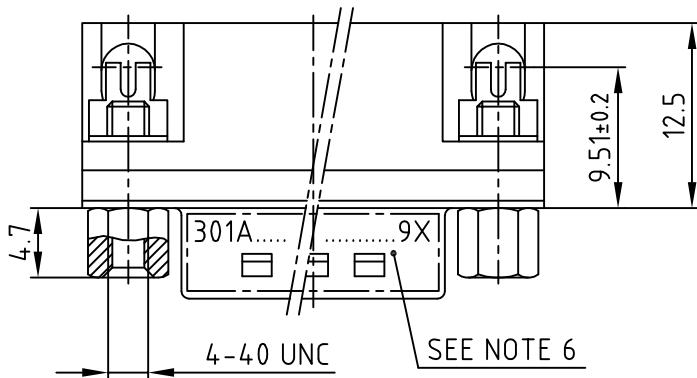
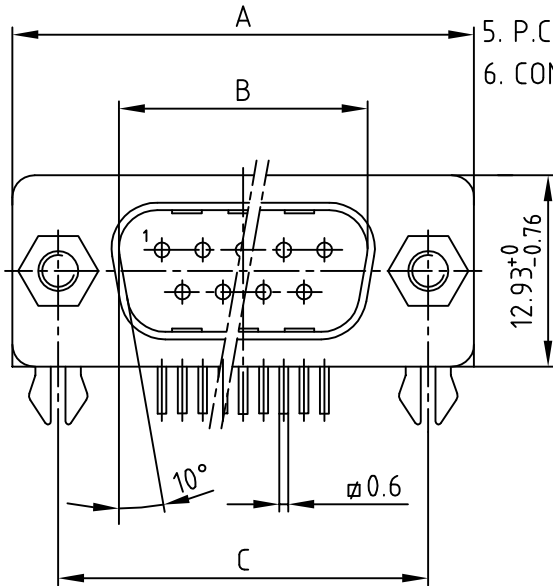


used for: D-SUB

NOTES:

- ① METAL SHELLS: STEEL; NICKEL PLATED
2. INSULATORS: PA UL 94 V-0; BLACK
3. PLATING: GOLD FLASH over NICKEL
4. PCB-SNAPS: COPPER ALLOY; min. 200µin TIN over 80µin NICKEL
PCB-HOLE: $\phi 3.1 \pm 0.1$; PCB THICKNESS 1.6mm
5. P.C.B. HOLE DRILLINGS ON DRAWING NO.: 16K111UA
6. CONNECTOR IS PART MARKED: 301A109...9X CONEC ABC



POS.	A -0.76	B $+0.25$	C	D -0.3	PART-NO.
9	31.19	16.79	25.00 $+0.12/-0.13$	6.12	301A10939X
15	39.52	25.12	33.30 $+0.15/-0.1$	6.12	301A10949X
25	53.42	38.84	47.04 ± 0.13	5.99	301A10959X
37	69.70	55.30	63.50 ± 0.13	5.99	301A10969X

RoHS compliant

THIS DRAWING MAY NOT BE COPIED OR REPRODUCED IN ANY WAY, AND MAY NOT BE PASSED ON TO A THIRD PARTY WITHOUT WRITTEN PERMISSION. OWNERSHIP AND COPYRIGHT OF CONEC GMBH DO NOT ALTER CAD DRAWING BY HAND

1 x b	Ä 5865	29.10.2015	Unkrüer
a	Original		
rev.	description	date	name

tolerance		
2001	date	name
drawn	02.07.	Parei
appd.	02.07.	E. Mickenbecker
norm		
d-old		

scale:	2:1
material:	SEE NOTES
title:	
D-SUB MALE 90°	
0.318inch 9-37pos.	
with threaded insert, hex bolt and clip	
dwg no:	DIN-A
16K1A233A	3
part no:	SEE TABLE
	sh: 1/1

CONEC

Mouser Electronics

Authorized Distributor

Click to View Pricing, Inventory, Delivery & Lifecycle Information:

CONEC:

[301A10939X](#) [302A11259X](#) [302A11269X](#)