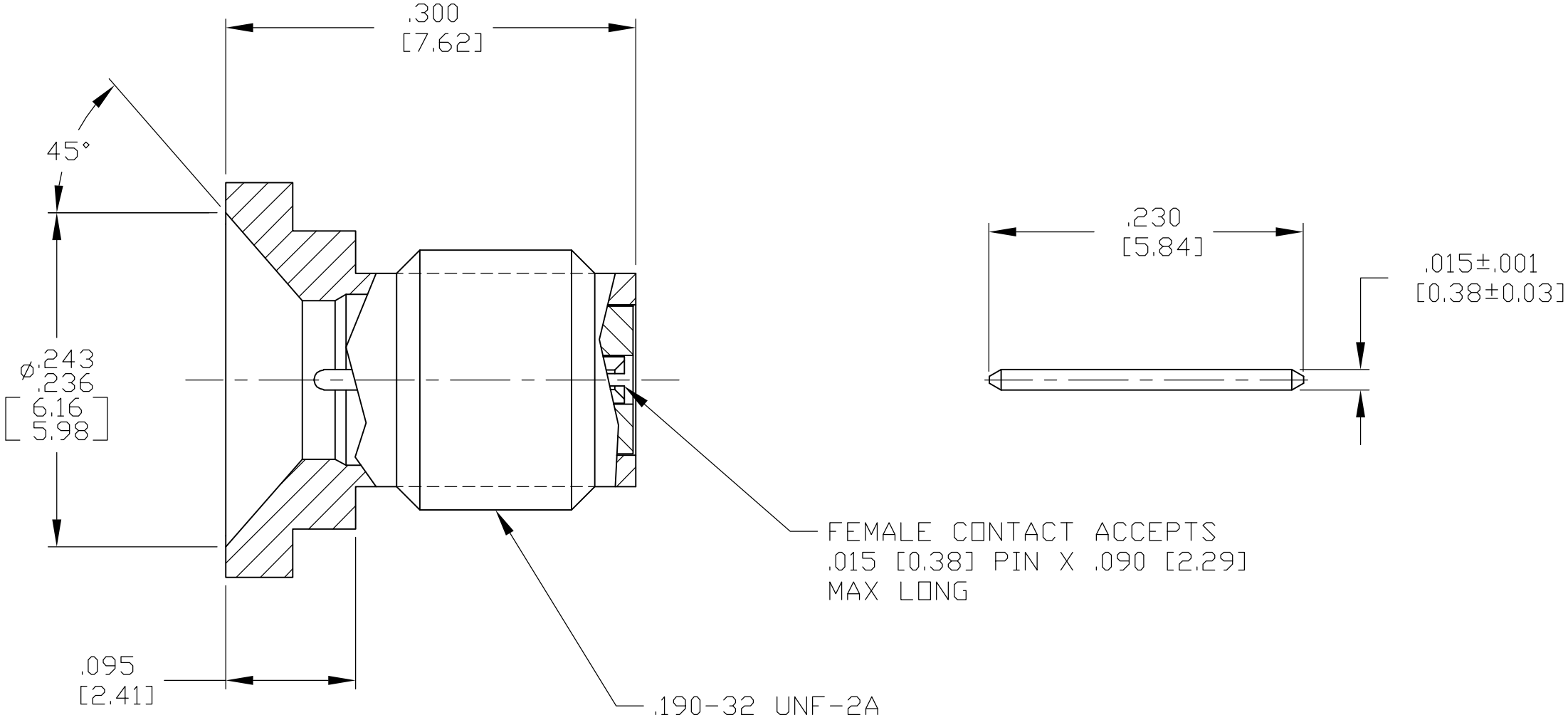
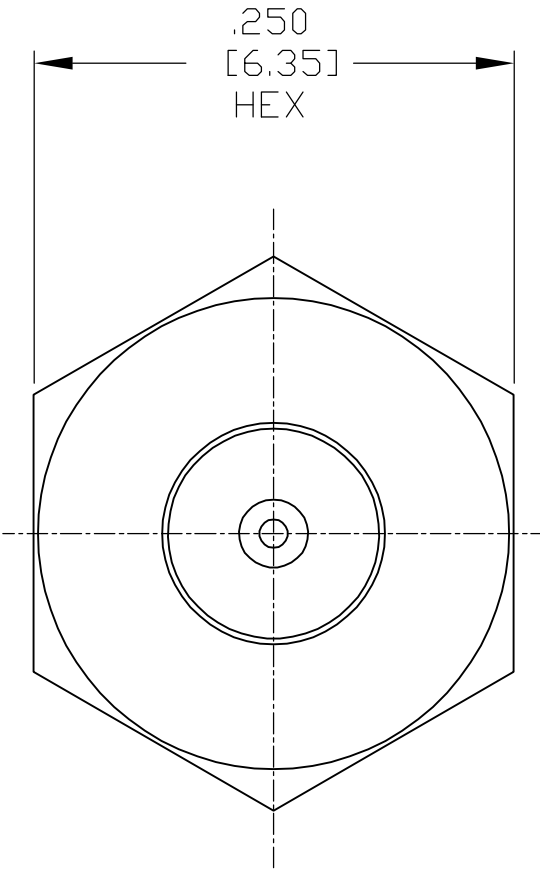


THIS DRAWING IS UNPUBLISHED.		RELEASED FOR PUBLICATION
© COPYRIGHT - BY TYCO ELECTRONICS CORPORATION.		ALL RIGHTS RESERVED.
COMPONENT	MATERIAL	FINISH
HOUSING	STAINLESS STEEL PER ASTM-A-682	PASSIVATED PER AMS-QQ-P-35
DIELECTRIC	PTFE FLUORCARBON PER ASTM-D-1710	-
CENTER CONTACT SLIDE CONTACT	BERYLLIUM COPPER PER ASTM-B-196	.000100 MIN GOLD PER ASTM-B-488 OVER .000100 MIN NICKEL PER QQ-N-290

LOC	DIST	REVISIONS				
DF	X0	P	LTR	DESCRIPTION	DATE	APVD
		B		REV PER ECO 06-025473	11-3-06	CT RG



1663670-1  
PART NUMBER

THIS DRAWING IS A CONTROLLED DOCUMENT.		DWN C.C.THOMAS 6-2-05		<div>AMP</div> <div>Tyco Electronics Corporation Harrisburg, Pa 17105-3608</div>				
DIMENSIONS: INCHES [mm]		CHK R.GROSS 6-2-05						
	TOLERANCES UNLESS OTHERWISE SPECIFIED:  0 PLC ± - 1 PLC ± - 2 PLC ± - 3 PLC ± .005 [0.13] 4 PLC ± - ANGLES ± -		APVD R.GROSS 6-2-05		NAME  SMP THREAD-IN PLUG ASSY WITH SLIDING PIN			
			PRODUCT SPEC —					
			APPLICATION SPEC —					
			—					
MATERIAL SEE TABLE	FINISH SEE TABLE	WEIGHT —		SIZE A2	CAGE CODE 00779	DRAWING NO C=1663670	RESTRICTED TO —	
CUSTOMER DRAWING				SCALE 10:1	SHEET 1 of 1	REV B		

# Mouser Electronics

Authorized Distributor

Click to View Pricing, Inventory, Delivery & Lifecycle Information:

[TE Connectivity:](#)

[1663670-1](#)