

NUMBER OF CONTACTS	"A" Inch (mm)	"B" Inch (mm)	"C" Inch (mm)	"D" Inch (mm)	"E" Inch (mm)
15	1.213 (30.80)	.984 (24.99)	.666 (16.92)	.090 (2.29)	.756 (19.20)
26	1.543 (39.20)	1.312 (33.32)	.970 (24.65)	.090 (2.29)	1.091 (27.70)
44	2.087 (53.00)	1.852 (47.04)	1.512 (38.40)	.090 (2.29)	1.618 (41.10)
62	2.732 (69.40)	2.500 (63.50)	2.157 (54.80)	.095 (2.41)	2.256 (57.30)
78	2.638 (67.00)	2.406 (61.10)	2.079 (52.81)	.095 (2.41)	2.169 (55.10)

NOTE:

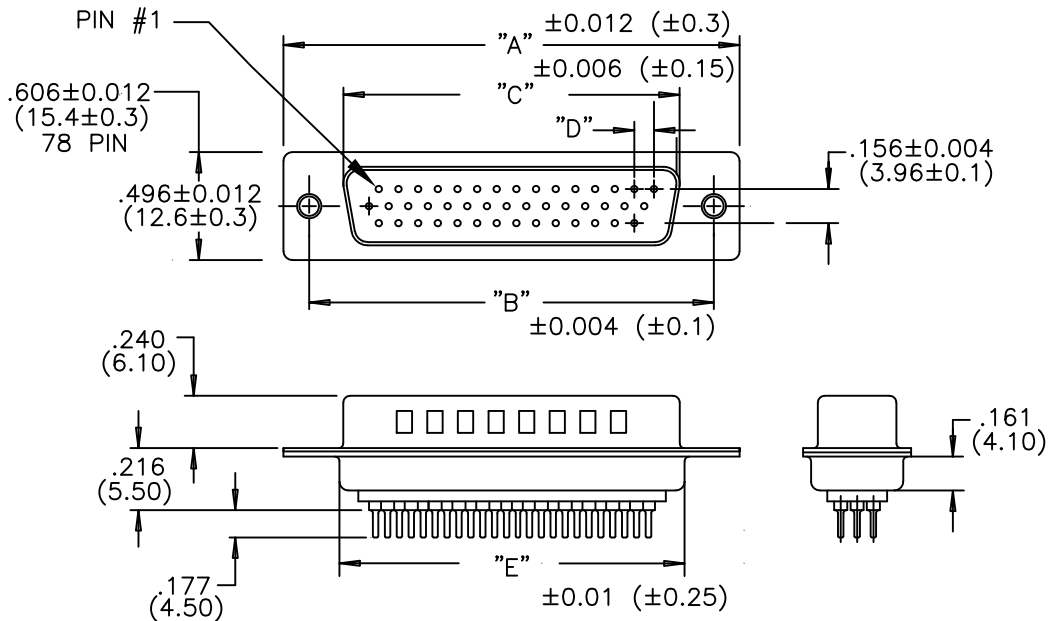
MATERIAL HOUSING: PBT UL94V-0, BLACK
 230°C PROCESS TEMP
 COPPER ALLOY
 STEEL

CONTACT: FULL GOLD FLASH
 SHELL: NICKEL

FINISH CONTACT: FULL GOLD FLASH
 SHELL: NICKEL

ELECTRICAL RATED CURRENT: 5A
 DWV: 500VAC RMS FOR 1 MIN
 INSULATOR RESISTANCE: 1000 MOhms MIN.
 CONTACT RESISTANCE: 15 mOhms MAX.

ENVIRONMENT OPERATION TEMPERATURE: -50°C TO +100°C



SERIES _____ 197-YYY-Y13LYY1

NUMBER OF CONTACTS _____

GENDER _____
 1 = MALE
 2 = FEMALE (NO GROUND INDENTS)

PC MOUNT _____
 3 = NICKEL SHELL

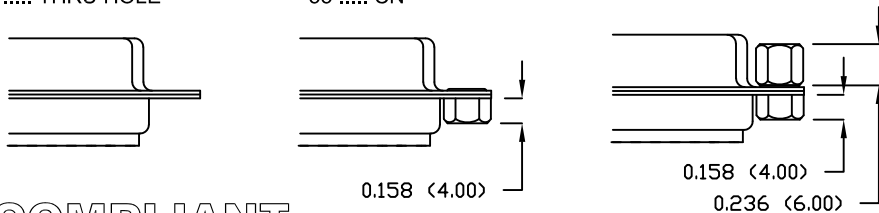
HARDWARE OPTIONS: _____
 00 = .120 MOUNTING HOLE
 55 = 4-40 CLINCH NUT (CN)
 03 = 4-40 CLINCH NUT (CN) && 4-40 JACK SCREW

PLATING: _____
 1 = GOLD FLASH

00 THRU HOLE

55 CN

03 CN // JACK SCREW



RoHS COMPLIANT

UNITS = inch (mm)

DO NOT SCALE FROM DRAWING



THESE DRAWINGS AND SPECIFICATIONS ARE THE PROPERTY OF NorComp AND SHALL NOT BE REPRODUCED, COPIED OR USED AS THE BASIS FOR THE MANUFACTURE OR SALE OF APPARATUS WITHOUT WRITTEN PERMISSION.

DRAWN:

P. JENKINS

DATE:

09/15/2005

NorComp

SCALE: NTS

SHEET 1 OF 1

REV 4

DWG NO.

197-YYY-113LYY1

Mouser Electronics

Authorized Distributor

Click to View Pricing, Inventory, Delivery & Lifecycle Information:

NorComp:

[197-015-113L001](#) [197-015-113L031](#) [197-015-113L551](#) [197-015-213L001](#) [197-015-213L031](#) [197-015-213L551](#)
[197-026-113L001](#) [197-026-113L031](#) [197-026-113L551](#) [197-026-213L001](#) [197-026-213L031](#) [197-026-213L551](#) [197-](#)
[044-113L001](#) [197-044-113L031](#) [197-044-113L551](#) [197-044-213L031](#) [197-044-213L551](#) [197-062-113L001](#) [197-062-](#)
[113L031](#) [197-062-113L551](#) [197-062-213L001](#) [197-062-213L031](#) [197-062-213L551](#) [197-078-113L001](#) [197-078-](#)
[113L031](#) [197-078-113L551](#) [197-078-213L001](#) [197-078-213L031](#) [197-078-213L551](#)