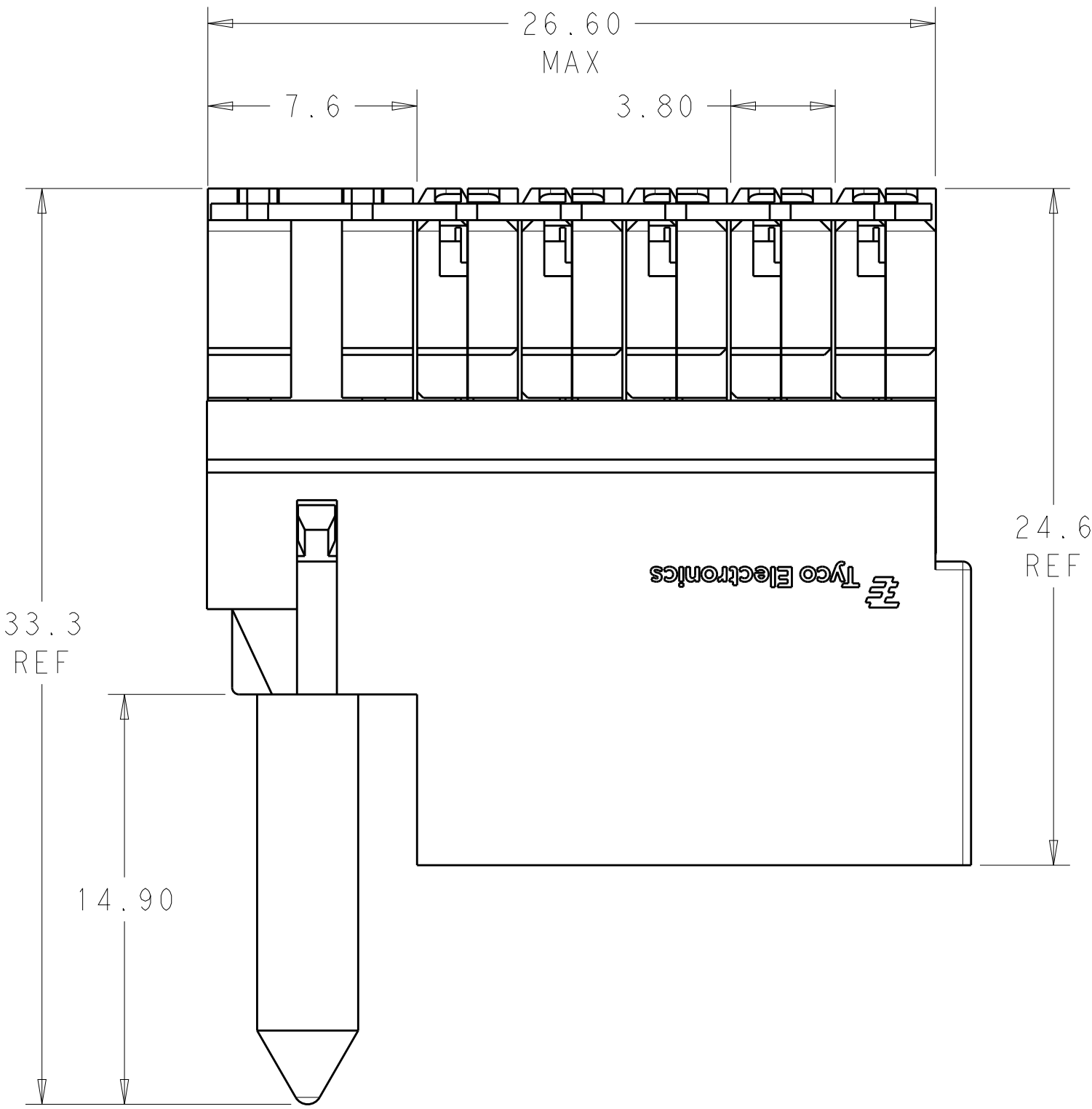
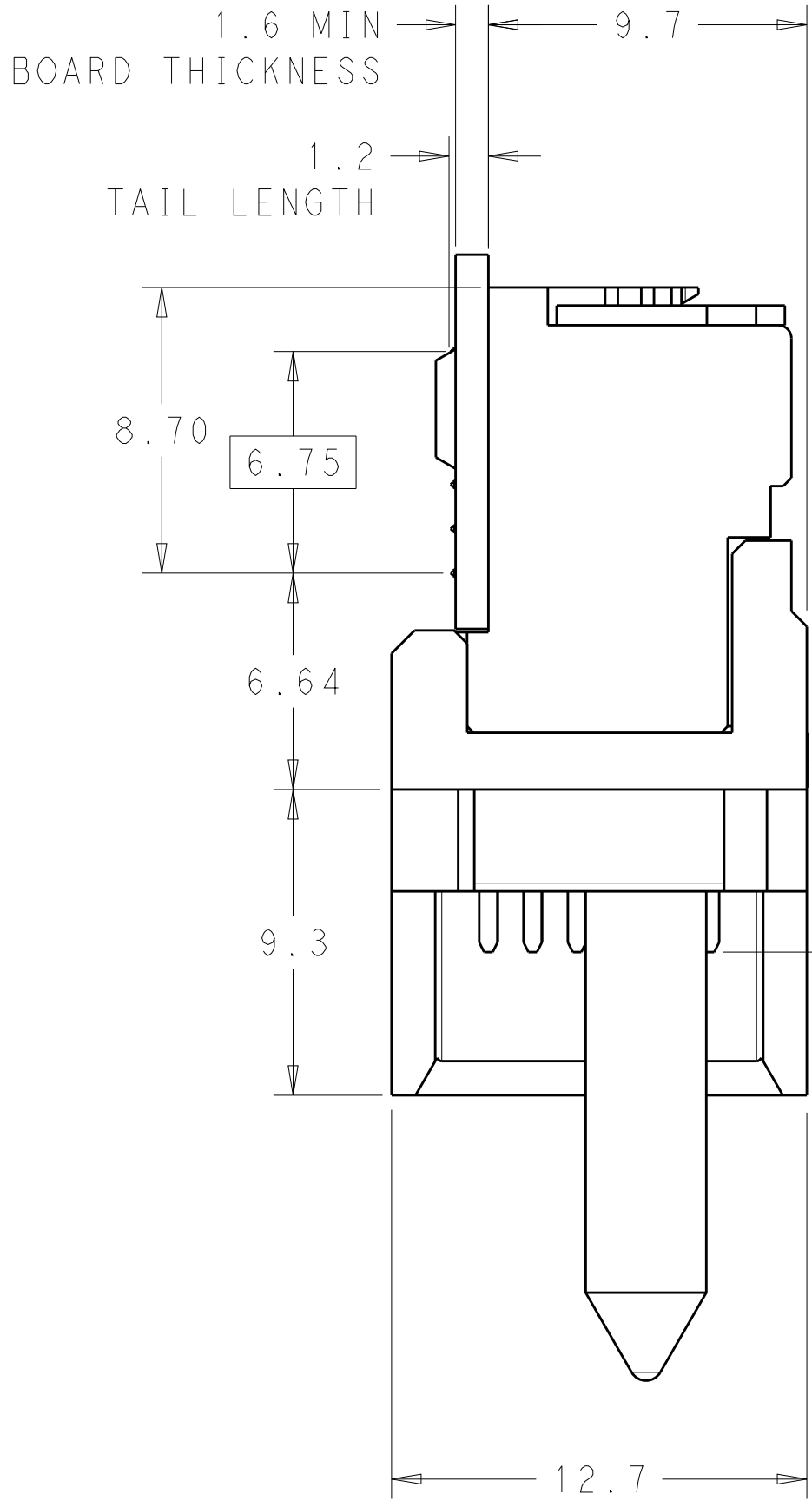
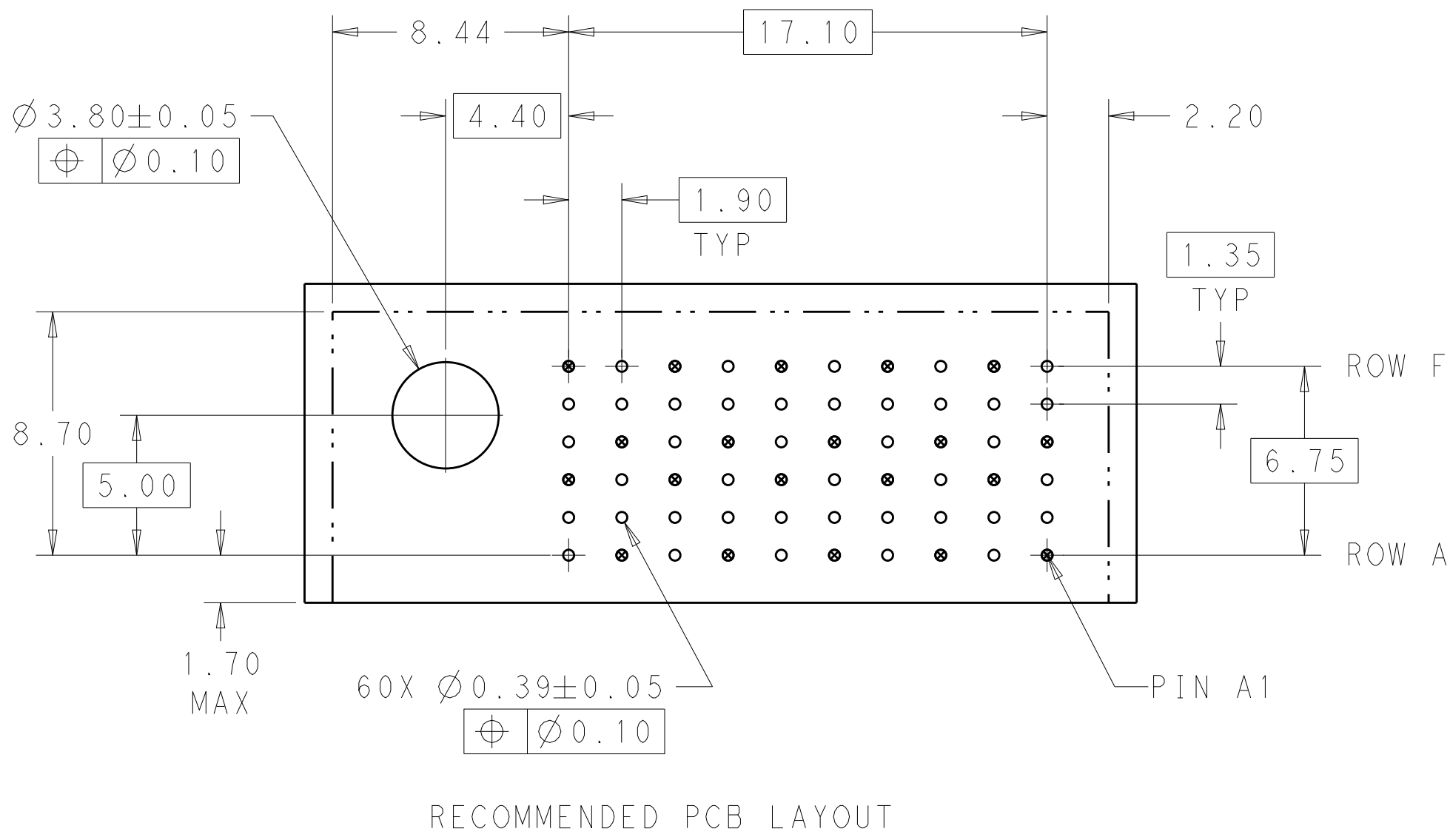
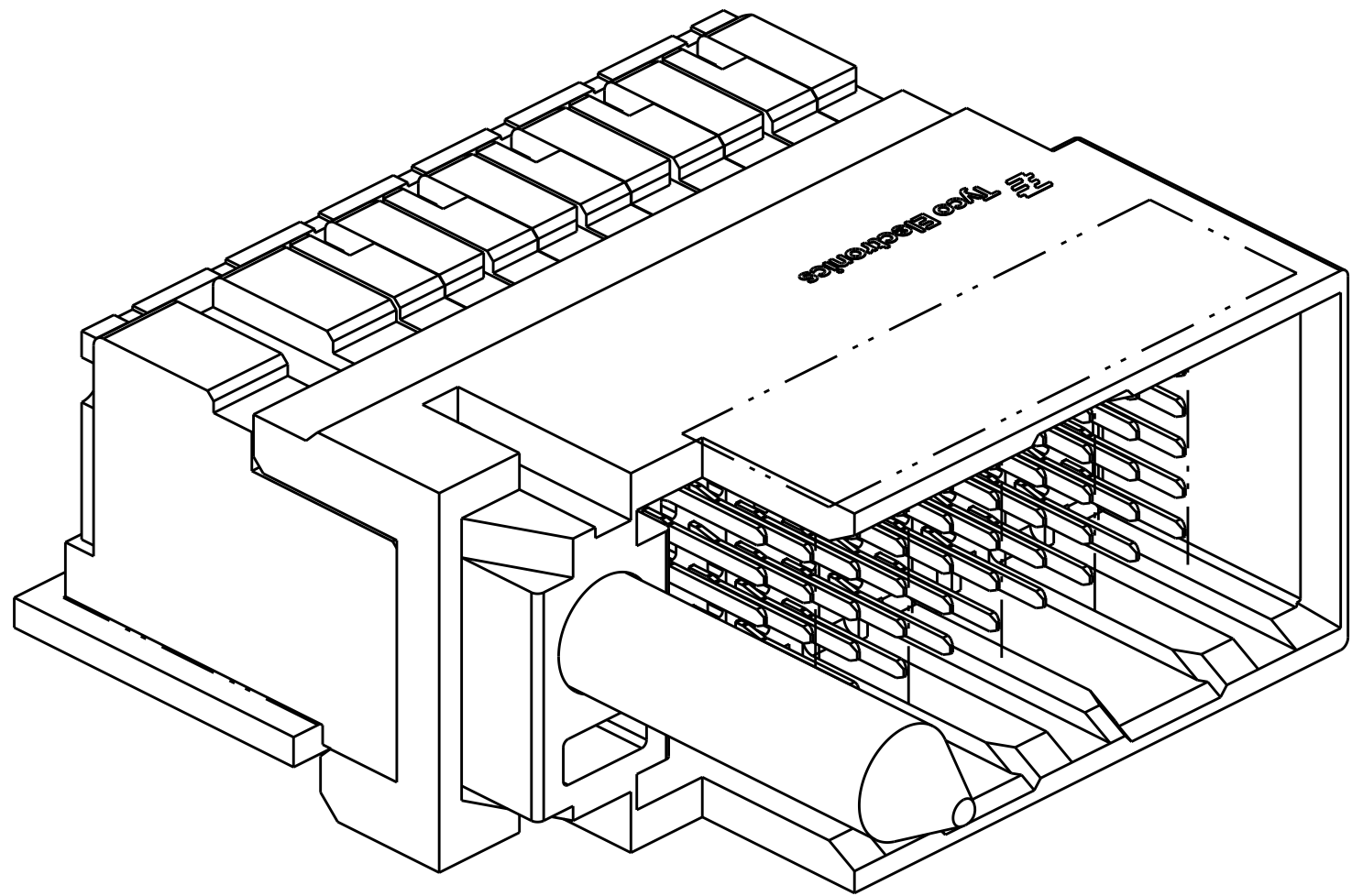
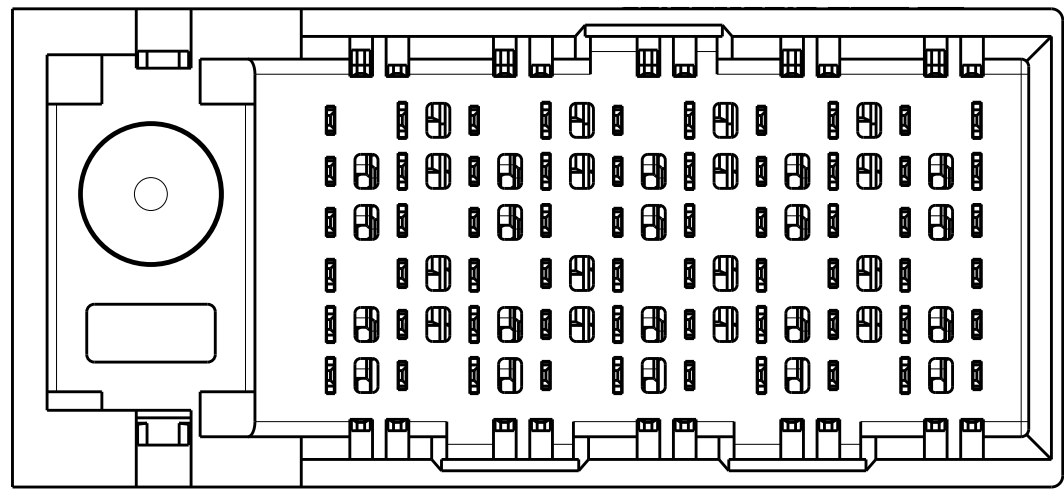


REVISIONS					
P	LTR	DESCRIPTION	DATE	DWN	APVD
	B1	REVISED PER ECO-15-003239	24MAR2015	AP	DD

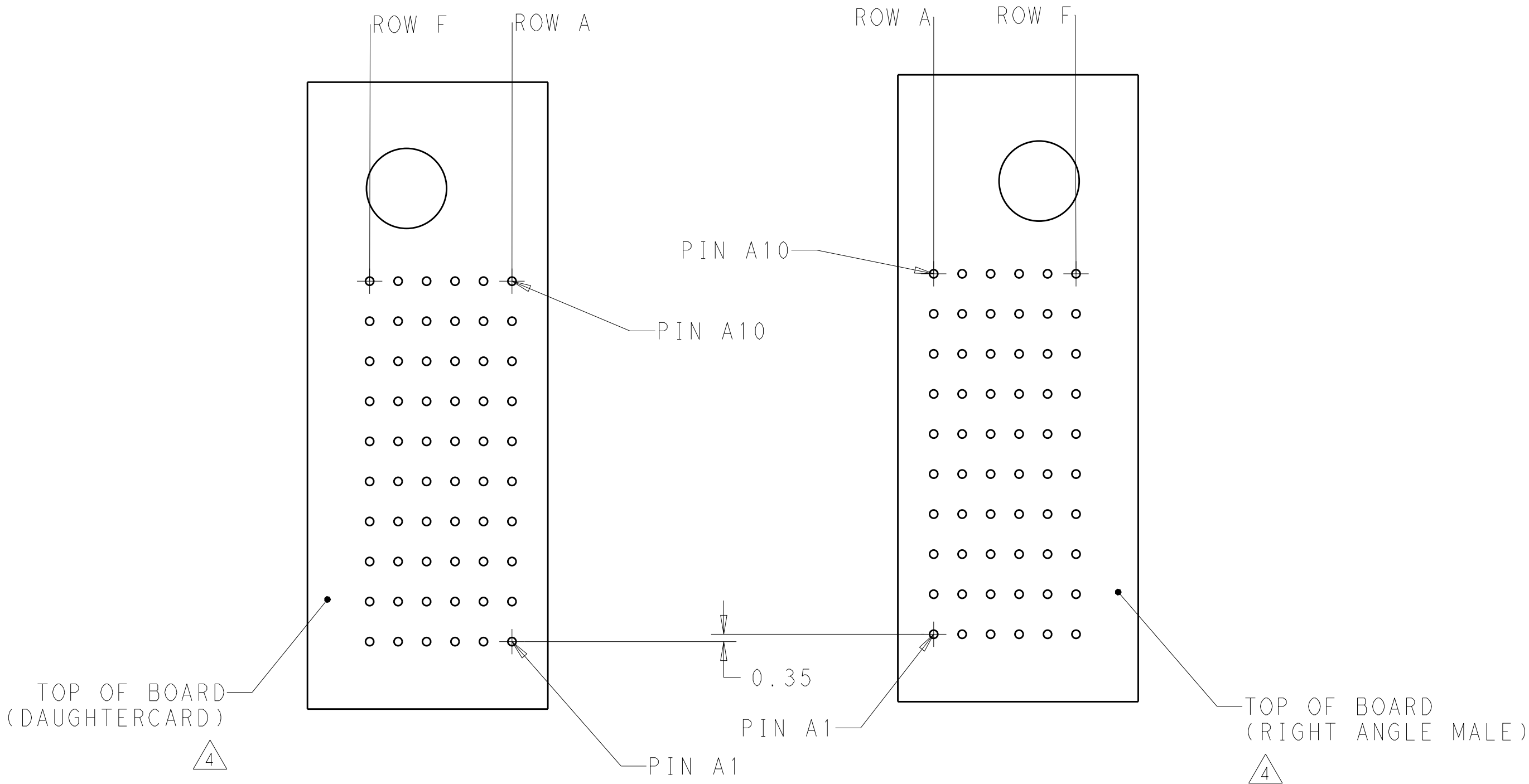


- 1 MATERIAL:
HOUSING: LCP, GLASS FILLED, UL94V-0.
TERMINALS: HIGH PERFORMANCE COPPER ALLOY.
- 2 FINISH:
30µm SELECTIVE GOLD IN CONTACT AREA. SELECTIVE TIN
ON PCB TAILS, NICKEL OVERALL.
- 3 FINISH:
30µm SELECTIVE GOLD IN CONTACT AREA. SELECTIVE TIN-LEAD
ON PCB TAILS, NICKEL OVERALL.
- 4 LEFT GUIDED RIGHT ANGLE MALE MATES TO
RIGHT GUIDED RIGHT ANGLE RECEPTACLE.
5. CONNECTOR SUPPLIED WITH MOUNTING SCREW.





THIS DRAWING IS A CONTROLLED DOCUMENT.		DWN -	07APR2011	TE Connectivity	
DIMENSIONS:		CHK J. EABY	07APR2011		
mm	TOLERANCES UNLESS OTHERWISE SPECIFIED:	APVD J. EABY	07APR2011	NAME IMPACT, STD. RAM, 2 PAIR, 10 COLUMN, LEFT GUIDED RIGHT END WALL SIGNAL MODULE, 0.39 EYELET	
	0 PLC ± 1 PLC ±0.25 2 PLC ±0.13 3 PLC ± 4 PLC ± ANGLES ± FINISH ±	PRODUCT SPEC	-	SIZE CAGE CODE DRAWING NO	
MATERIAL	SEE TABLE	APPLICATION SPEC	-	A100779C=2143017	
	-	WEIGHT	-	RESTRICTED TO	
Customer Drawing			SCALE 5:1	SHEET 1 OF 2	REV B1

REVISIONS					
P.	LTR.	DESCRIPTION	DATE	DWN.	APVD.
-	-	SEE SHEET 1	-	-	-



	5.50	2143017-6
	4.90	2143017-5
	5.50	2143017-3
	4.90	2143017-2
FINISH	DIM M	PART NUMBER

REFER TO WWW.TE.COM
FOR PRODUCT AVAILABILITY

THIS DRAWING IS A CONTROLLED DOCUMENT.		DWN	07APR2011	 TE Connectivity		
		CHK	J. EABY 07APR2011			
DIMENSIONS:		APVD	J. EABY 07APR2011	NAME	IMPACT, STD, RAM, 2 PAIR, 10 COLUMN, LEFT GUIDED RIGHT END WALL SIGNAL MODULE, 0.39 EYELET	
mm	TOLERANCES UNLESS OTHERWISE SPECIFIED:		PRODUCT SPEC			
	0 PLC	±.	-			APPLICATION SPEC
	1 PLC	±0.25	-			
	2 PLC	±0.13	-			
	3 PLC	±.	-			
		4 PLC	±.			
		ANGLES	±.			
MATERIAL	FINISH	WEIGHT	-	SIZE	CAGE CODE	
	SEE TABLE			DRAWING NO	RESTRICTED TO	
		Customer Drawing		A100779	G=2143017	
		SCALE	5:1	SHEET	2 OF 2	
					REV	
					B1	

Mouser Electronics

Authorized Distributor

Click to View Pricing, Inventory, Delivery & Lifecycle Information:

[TE Connectivity:](#)

[2143017-3](#)