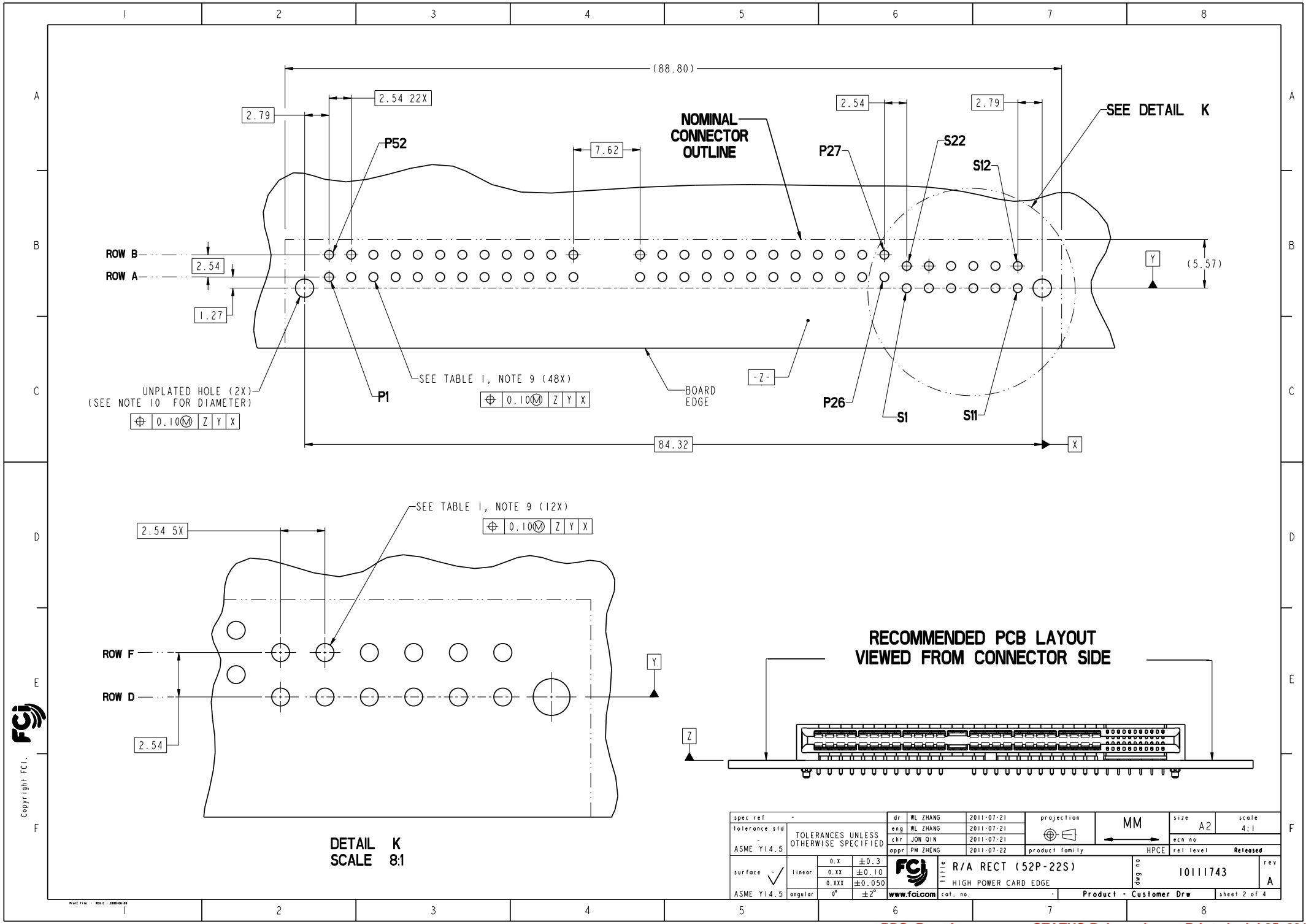


Copyright FCI.
FCI

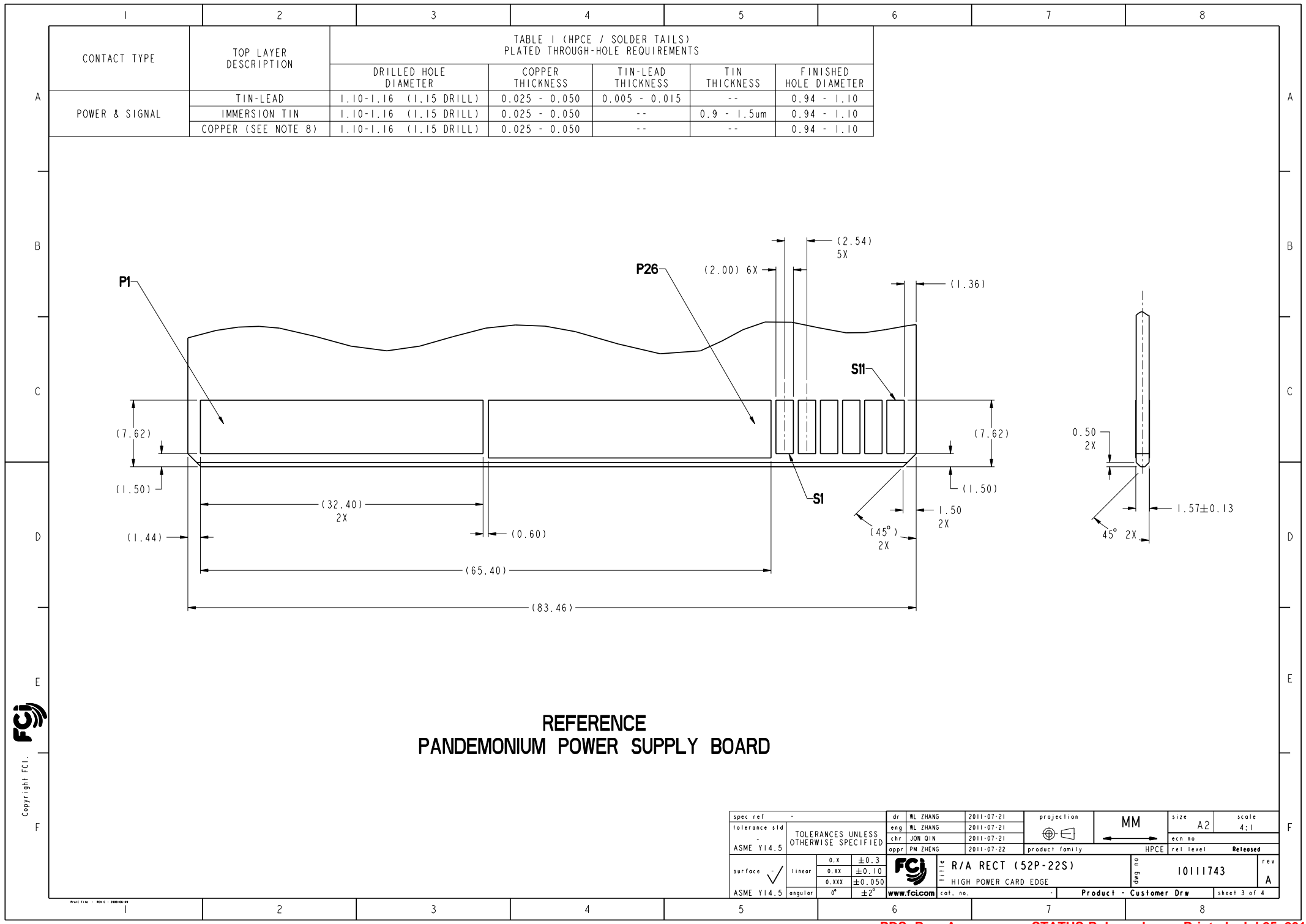
SECTION C-C

SECTION D-D

spec ref	-	dr	WL ZHANG	2011-07-21	projection	MM	size	A2	scale	4:1
tolerance std	-	eng	WL ZHANG	2011-07-21	chr	JON QIN	ecm no	-	rel level	Released
ASME Y14.5	TOLERANCES UNLESS OTHERWISE SPECIFIED	appr	PM ZHENG	2011-07-22	product family	HPCE	rel level	Released	rev	A
surface	linear	0.X	±0.3	0.XX	±0.10	0.XXX	±0.050	angular	0°	±2°
ASME Y14.5	linear	0°	±2°	www.fcicom	col. no.	-	Product - Customer Drw	sheet 1 of 4	rev	A

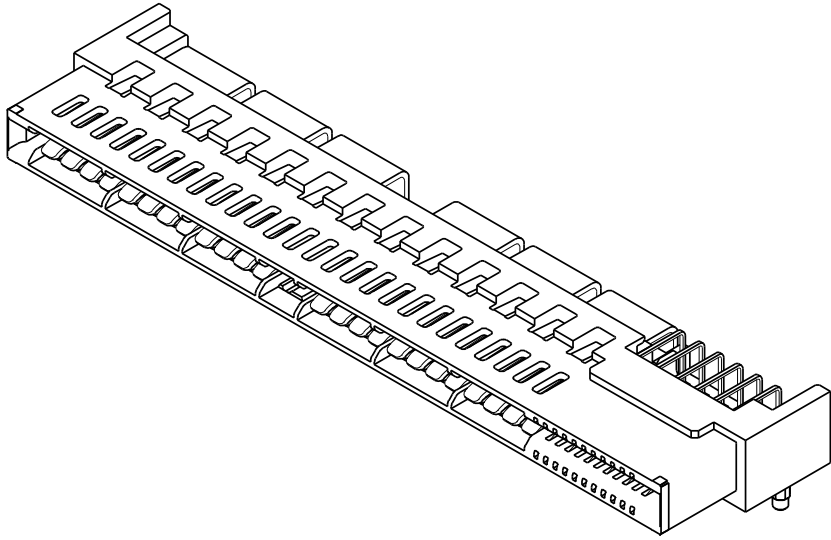
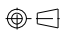

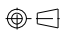

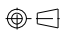



spec ref	-	dr	WL ZHANG	2011-07-21	projection	MM	size	A2	scale	4:1
tolerance std	ASME Y14.5	eng	WL ZHANG	2011-07-21	chr	JON QIN	ecm no			
		appr	PM ZHENG	2011-07-22	product family	HPCE	rel level	Released		
surface	linear	0.X	±0.3							
		0.XX	±0.10							
		0.XXX	±0.050							
	angular	0°	±2°							
		FCI		R/A RECT (52P-22S)		10111743		rev		A
		www.fci.com		col. no.		Product - Customer Drw		sheet 2 of 4		



REFERENCE
PANDEMONIUM POWER SUPPLY BOARD

spec ref	-	dr	WL ZHANG	2011-07-21	projection	MM	size	A2	scale	4:1
tolerance std	-	eng	WL ZHANG	2011-07-21			ccn no			
	TOLERANCES UNLESS OTHERWISE SPECIFIED	chr	JON QIN	2011-07-21			rel level	Released		
ASME Y14.5		appr	PM ZHENG	2011-07-22	product family	HPCE				
surface	linear	0.X	±0.3							
		0.XX	±0.10							
		0.XXX	±0.050							
ASME Y14.5	angular	0°	±2°							

	1	2	3	4	5	6	7	8																																																																			
A	HPCE PART NUMBER (TABLE 2)																																																																										
	PART NUMBER	TAIL TYPE	HOLD-DOWN OPTION	ORIENTATION KEY	DIM "A" TAIL LENGTH ±0.25					DIM "B" MATING LENGTH																																																																	
	10111743-008LF	SOLDER TAIL	YES	NO	3.35					(4.58)																																																																	
		10111743-009LF	SOLDER TAIL	YES	NO	3.25	(3.88)																																																																				
B																																																																											
C																																																																											
D	NOTES: 1. CONNECTOR MATERIALS: HOUSING: HIGH TEMPERATURE THERMAL PLASTIC, BLACK UL 94V-0 COMPLIANT CONTACTS: HIGH PERFORMANCE COPPER ALLOY. 2. CONTACT FINISH REF. GS-12-604 SECTION 5.2. 3. PRODUCT SPECIFICATION: GS-12-604. 4. APPLICATION SPECIFICATION: GS-20-128. 5. PRODUCT MARKING (FCI - PART NUMBNER & DATE CODE) ON HOUSING IN AREA SHOWN. 6. PACKAGING MEETS FCI SPECIFICATION GS-14-937. 7. HOUSING COMPONENT WILL WITHSTAND EXPOSURE TO 260°C PEAK TEMPERATURE FOR 60 SECONDS IN A CONVECTION, INFRA-RED, OR VAPOR PHASE REFLOW OVEN. 8. COPPER PLATING THICKNESS IN CENTER OF VIA-HOLE CAN BE NO MORE THAN 0.003 LESS THAN OTHER AREAS. 9. ALL HOLE SIZES ARE FINISHED HOLE SIZES. 10. MOUNTING HOLES ARE UNPLATED Ø 2.10 +/- 0.1 FOR SOLDER TAILS																																																																										
E																																																																											
F	<div>Copyright FCI.</div> <table><tr><td>spec ref</td><td>-</td><td>dr</td><td>WL ZHANG</td><td>2011-07-21</td><td>projection</td><td>MM</td><td>size</td><td>A2</td><td>scale</td><td>4:1</td></tr><tr><td>tolerance std</td><td>-</td><td>eng</td><td>WL ZHANG</td><td>2011-07-21</td><td rowspan="2"></td><td rowspan="2"></td><td>ecm no</td><td></td><td></td><td></td></tr><tr><td>ASME Y14.5</td><td>TOLERANCES UNLESS OTHERWISE SPECIFIED</td><td>chr</td><td>JON QIN</td><td>2011-07-21</td><td>rel level</td><td>Released</td></tr><tr><td></td><td></td><td>appr</td><td>PM ZHENG</td><td>2011-07-22</td><td>product family</td><td>HPCE</td><td></td><td></td><td></td><td></td></tr><tr><td>surface</td><td>linear</td><td>0.X</td><td>±0.3</td><td rowspan="3"></td><td rowspan="3">R/A RECT (52P-22S)</td><td rowspan="3">10111743</td><td rowspan="3">rev</td><td rowspan="3">A</td></tr><tr><td></td><td></td><td>0.XX</td><td>±0.10</td></tr><tr><td></td><td></td><td>0.XXX</td><td>±0.050</td></tr><tr><td>ASME Y14.5</td><td>angular</td><td>0°</td><td>±2°</td><td>www.fci.com</td><td>col. no.</td><td>-</td><td>Product - Customer Drw</td><td>sheet 4 of 4</td></tr></table>									spec ref	-	dr	WL ZHANG	2011-07-21	projection	MM	size	A2	scale	4:1	tolerance std	-	eng	WL ZHANG	2011-07-21			ecm no				ASME Y14.5	TOLERANCES UNLESS OTHERWISE SPECIFIED	chr	JON QIN	2011-07-21	rel level	Released			appr	PM ZHENG	2011-07-22	product family	HPCE					surface	linear	0.X	±0.3		R/A RECT (52P-22S)	10111743	rev	A			0.XX	±0.10			0.XXX	±0.050	ASME Y14.5	angular	0°	±2°	www.fci.com	col. no.	-	Product - Customer Drw	sheet 4 of 4
spec ref										-	dr	WL ZHANG	2011-07-21	projection	MM	size	A2	scale	4:1																																																								
tolerance std										-	eng	WL ZHANG	2011-07-21			ecm no																																																											
ASME Y14.5	TOLERANCES UNLESS OTHERWISE SPECIFIED	chr	JON QIN	2011-07-21	rel level	Released																																																																					
		appr	PM ZHENG	2011-07-22	product family	HPCE																																																																					
surface	linear	0.X	±0.3		R/A RECT (52P-22S)	10111743	rev	A																																																																			
		0.XX	±0.10																																																																								
		0.XXX	±0.050																																																																								
ASME Y14.5	angular	0°	±2°	www.fci.com	col. no.	-	Product - Customer Drw	sheet 4 of 4																																																																			

Mouser Electronics

Authorized Distributor

Click to View Pricing, Inventory, Delivery & Lifecycle Information:

[FCI / Amphenol:](#)

[10111743-009LF](#) [10111743-008LF](#) [10111743-010LF](#)