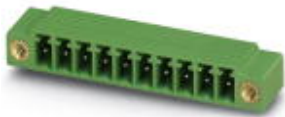


## Base strip - MC 1,5/ 5-GF-3,5 - 1843826

Please be informed that the data shown in this PDF Document is generated from our Online Catalog. Please find the complete data in the user's documentation. Our General Terms of Use for Downloads are valid (<http://phoenixcontact.com/download>)

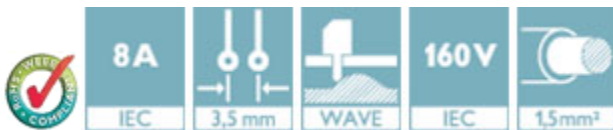
Header, Nominal current: 8 A, Rated voltage (III/2): 160 V, Number of positions: 5, Pitch: 3.5 mm, Color: green, Contact surface: Tin, Mounting: Wave soldering




The figure shows a 10-position version of the product

### Product Features

- Versions with engagement noses for locking plugs with self-locking flanges
- Plug-in direction parallel and vertical to the PCB
- Low-profile pin strips with compact pitches
- Individual position coding by inserting coding profiles



### Key Commercial Data

|                                      |   |
|--------------------------------------|---|
| Packing unit                         | 1 pc  |
| GTIN                                 | <br>4 017918 112936 |
| Weight per Piece (excluding packing) | 2.46 g  |
| Custom tariff number                 | 85366990  |
| Country of origin                    | Germany   |

### Technical data

#### Dimensions

|                          |         |
|--------------------------|---------|
| Length                   | 9.2 mm  |
| Pitch                    | 3.50 mm |
| Dimension a              | 14 mm   |
| Constructional height    | 8 mm    |
| Length of the solder pin | 3.4 mm  |

## Base strip - MC 1,5/ 5-GF-3,5 - 1843826

### Technical data

#### Dimensions

|                |              |
|----------------|--------------|
| Pin dimensions | 0,8 x 0,8 mm |
| Hole diameter  | 1.2 mm       |

#### General

|  |               |
|--|---------------|
| Range of articles                      | MC 1,5/...-GF |
| Insulating material group              | IIIa          |
| Rated surge voltage (III/3)            | 2.5 kV        |
| Rated surge voltage (III/2)            | 2.5 kV        |
| Rated surge voltage (II/2)             | 2.5 kV        |
| Rated voltage (III/3)                  | 160 V         |
| Rated voltage (III/2)                  | 160 V         |
| Rated voltage (II/2)                   | 250 V         |
| Connection in acc. with standard       | EN-VDE        |
| Nominal current I <sub>N</sub>         | 8 A           |
| Maximum load current                   | 8 A           |
| Insulating material                    | PBT           |
| Flammability rating according to UL 94 | V0            |
| Color                                  | green         |
| Number of positions                    | 5             |

#### Standards and Regulations

|  |        |
|--|--------|
| Connection in acc. with standard       | EN-VDE |
|  | CSA    |
| Flammability rating according to UL 94 | V0     |

### Classifications

#### eCl@ss

|            |          |
|------------|----------|
| eCl@ss 4.0 | 272607xx |
| eCl@ss 4.1 | 27260701 |
| eCl@ss 5.0 | 27260701 |
| eCl@ss 5.1 | 27260701 |
| eCl@ss 6.0 | 27260704 |
| eCl@ss 7.0 | 27440402 |
| eCl@ss 8.0 | 27440402 |
| eCl@ss 9.0 | 27440402 |

# Base strip - MC 1,5/ 5-GF-3,5 - 1843826

## Classifications

### ETIM

|          |          |
|----------|----------|
| ETIM 3.0 | EC001121 |
| ETIM 4.0 | EC002637 |
| ETIM 5.0 | EC002637 |

### UNSPSC

|               |          |
|---------------|----------|
| UNSPSC 6.01   | 30211810 |
| UNSPSC 7.0901 | 39121409 |
| UNSPSC 11     | 39121409 |
| UNSPSC 12.01  | 39121409 |
| UNSPSC 13.2   | 39121409 |

## Approvals

### Approvals


#### Approvals


CSA / VDE Gutachten mit Fertigungsüberwachung / IECEx CB Scheme / CCA / EAC / cULus Recognized / EAC

#### Ex Approvals

#### Approvals submitted

### Approval details

|   |       |       |
|---|-------|-------|
| CSA  |       |       |
|   | B     | D     |
| Nominal current I <sub>N</sub>  | 8 A   | 8 A   |
| Nominal voltage U <sub>N</sub>  | 300 V | 300 V |

|   |     |
|---|-----|
| VDE Gutachten mit Fertigungsüberwachung  |     |
| Nominal current I <sub>N</sub>  | 8 A |

# Base strip - MC 1,5/ 5-GF-3,5 - 1843826

## Approvals

|                    |       |
|--------------------|-------|
| Nominal voltage UN | 160 V |
|--------------------|-------|

|                    |       |
|--------------------|-------|
| IECEE CB Scheme    |       |
| Nominal current IN | 8 A   |
| Nominal voltage UN | 160 V |

|                    |       |
|--------------------|-------|
| CCA                |       |
| Nominal current IN | 8 A   |
| Nominal voltage UN | 160 V |

|     |
|-----|
| EAC |
|-----|

|                    |       |       |
|--------------------|-------|-------|
| cULus Recognized   |       |       |
|                    | B     | D     |
| Nominal current IN | 8 A   | 8 A   |
| Nominal voltage UN | 300 V | 300 V |

|     |
|-----|
| EAC |
|-----|

## Accessories

Accessories

Coding element

Coding profile - CP-MSTB - 1734634

Coding profile, is inserted into the slot on the plug or inverted header, red insulating material



Labeled terminal marker

## Base strip - MC 1,5/ 5-GF-3,5 - 1843826

### Accessories

Marker card - SK 3,5/2,8:FORTL.ZAHLEN - 0804073



Marker card, Card, white, labeled, Horizontal: Consecutive numbers 1 - 10, 11 - 20, etc. up to 91 - 99, Mounting type: Adhesive, for terminal block width: 3.5 mm, Lettering field: 3.5 x 2.8 mm

---

Fiber optics - MC 1,5/10-LWL 1,5-3,5 - 1841161

Fiber optics, Pitch: 3.5 mm, Number of positions: 10, Dimension a: 1.5 mm, Color: transparent



Fiber optics - MC 1,5/10-LWL 2,3-3,5 - 1841187

Fiber optics, Pitch: 3.5 mm, Number of positions: 10, Dimension a: 2.3 mm, Color: transparent



Fiber optics - MC 1,5/10-LWL 4-3,5 - 1841200

Fiber optics, Pitch: 3.5 mm, Number of positions: 10, Dimension a: 4 mm, Color: transparent



### Additional products

Printed-circuit board connector - TFMC 1,5/ 5-STF-3,5 - 1772731



Plug component, Nominal current: 8 A, Rated voltage (III/2): 160 V, Number of positions: 5, Pitch: 3.5 mm, Connection method: Push-in spring connection, Color: green, Contact surface: Tin

---

## Base strip - MC 1,5/ 5-GF-3,5 - 1843826

### Accessories

Printed-circuit board connector - MC 1,5/ 5-STF-3,5 - 1847084

Plug component, Nominal current: 8 A, Rated voltage (III/2): 160 V, Nominal current (Ex): 8 A, Nominal voltage (Ex): 160 V, Number of positions: 5, Pitch: 3.5 mm, Connection method: Screw connection with tension sleeve, Color: green, Contact surface: Tin



Printed-circuit board connector - MCVW 1,5/ 5-STF-3,5 - 1863039

Plug component, Nominal current: 8 A, Rated voltage (III/2): 160 V, Number of positions: 5, Pitch: 3.5 mm, Connection method: Screw connection with tension sleeve, Color: green, Contact surface: Tin



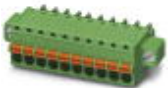
Printed-circuit board connector - MCVR 1,5/ 5-STF-3,5 - 1863330

Plug component, Nominal current: 8 A, Rated voltage (III/2): 160 V, Number of positions: 5, Pitch: 3.5 mm, Connection method: Screw connection with tension sleeve, Color: green, Contact surface: Tin



Printed-circuit board connector - FK-MCP 1,5/ 5-STF-3,5 - 1940127

Plug component, Nominal current: 8 A, Rated voltage (III/2): 160 V, Number of positions: 5, Pitch: 3.5 mm, Connection method: Push-in spring connection, Color: green, Contact surface: Tin



Printed-circuit board connector - FMC 1,5/ 5-STF-3,5 - 1966127

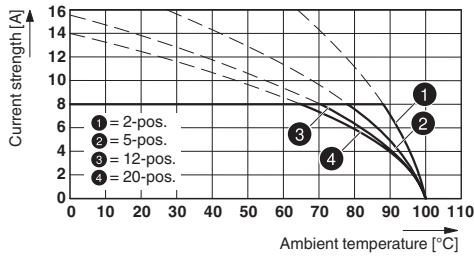
Plug component, Nominal current: 8 A, Rated voltage (III/2): 160 V, Number of positions: 5, Pitch: 3.5 mm, Connection method: Push-in spring connection, Color: green, Contact surface: Tin



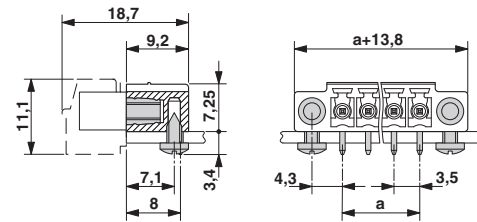
### Drawings

# Base strip - MC 1,5/ 5-GF-3,5 - 1843826

Diagram

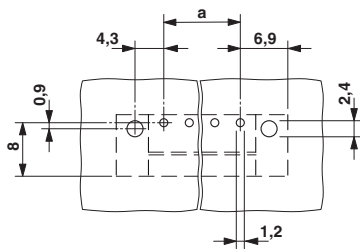


Dimensional drawing

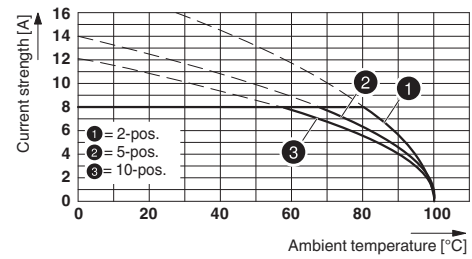


Type: FK-MCP 1,5/...-STF-3,5 with MC 1,5/...-GF-3,5

Drilling diagram

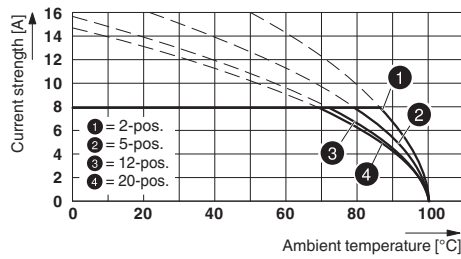


Diagram



Type: TFMC 1,5/...-STF-3,5 with MC 1,5/...-GF-3,5

Diagram

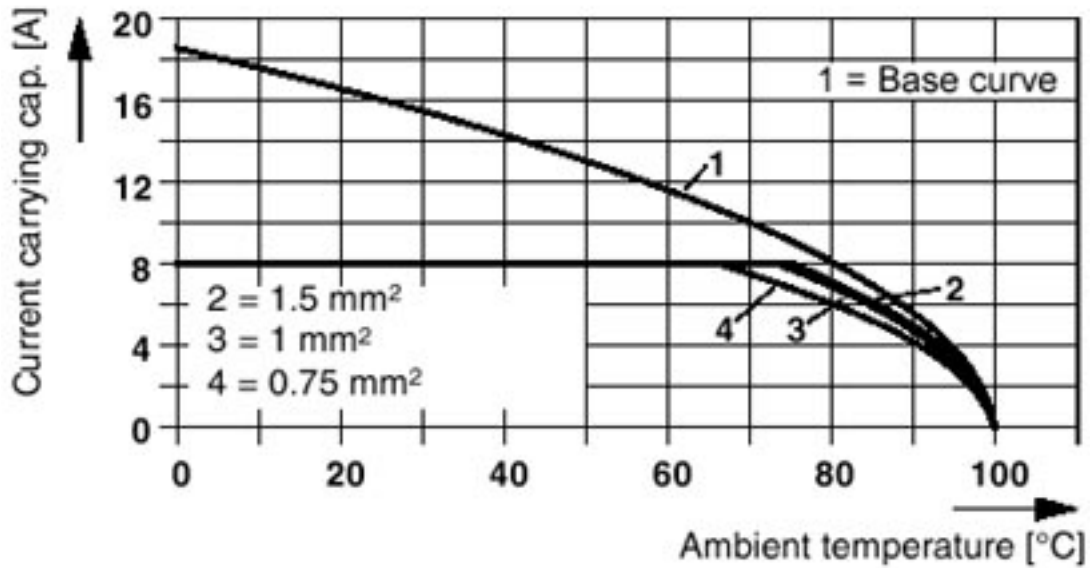


Type: MC 1,5/...-STF-3,5 with MC 1,5/...-GF-3,5

# Base strip - MC 1,5/ 5-GF-3,5 - 1843826

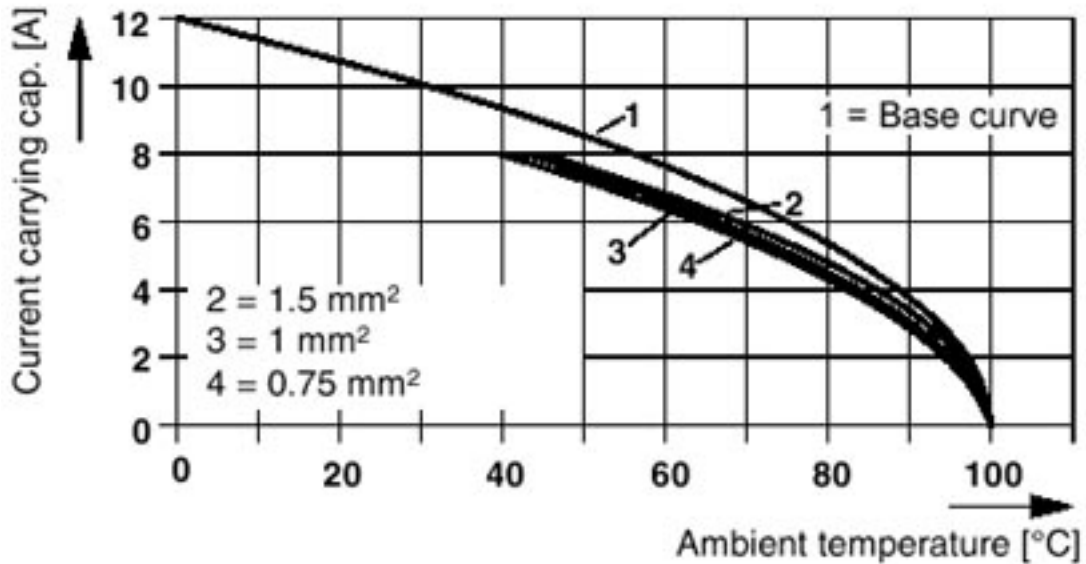
Diagram

Plug: FRONT-MC 1,5/5-ST(F)-3,81(3,5)  
Header: MC(V) 1,5/5-G(F)-3,81(3,5)



Diagram

Plug: MCVR(W) 1,5/5-ST(F)-3,81(3,5)  
Header: MC(V) 1,5/5-G(F)-3,81(3,5)

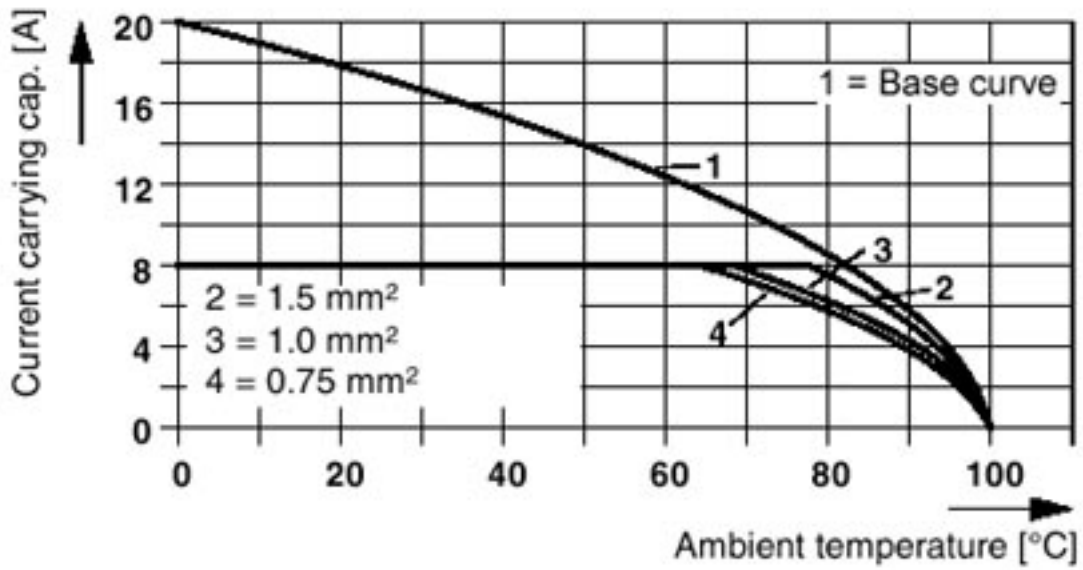




# Base strip - MC 1,5/ 5-GF-3,5 - 1843826

Diagram

Plug: MC 1,5/5-ST(F)-3,81(3,5)  
Header: MC(V) 1,5/5-G(F)-3,81(3,5)



# Mouser Electronics

Authorized Distributor

Click to View Pricing, Inventory, Delivery & Lifecycle Information:

[Phoenix Contact:](#)

[1843826](#)