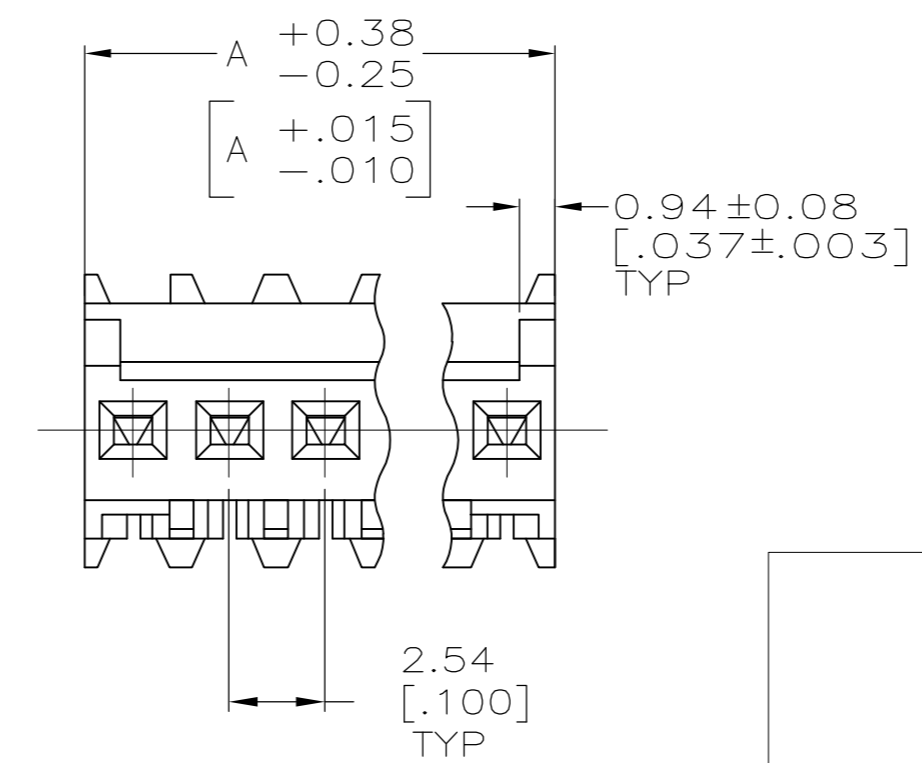
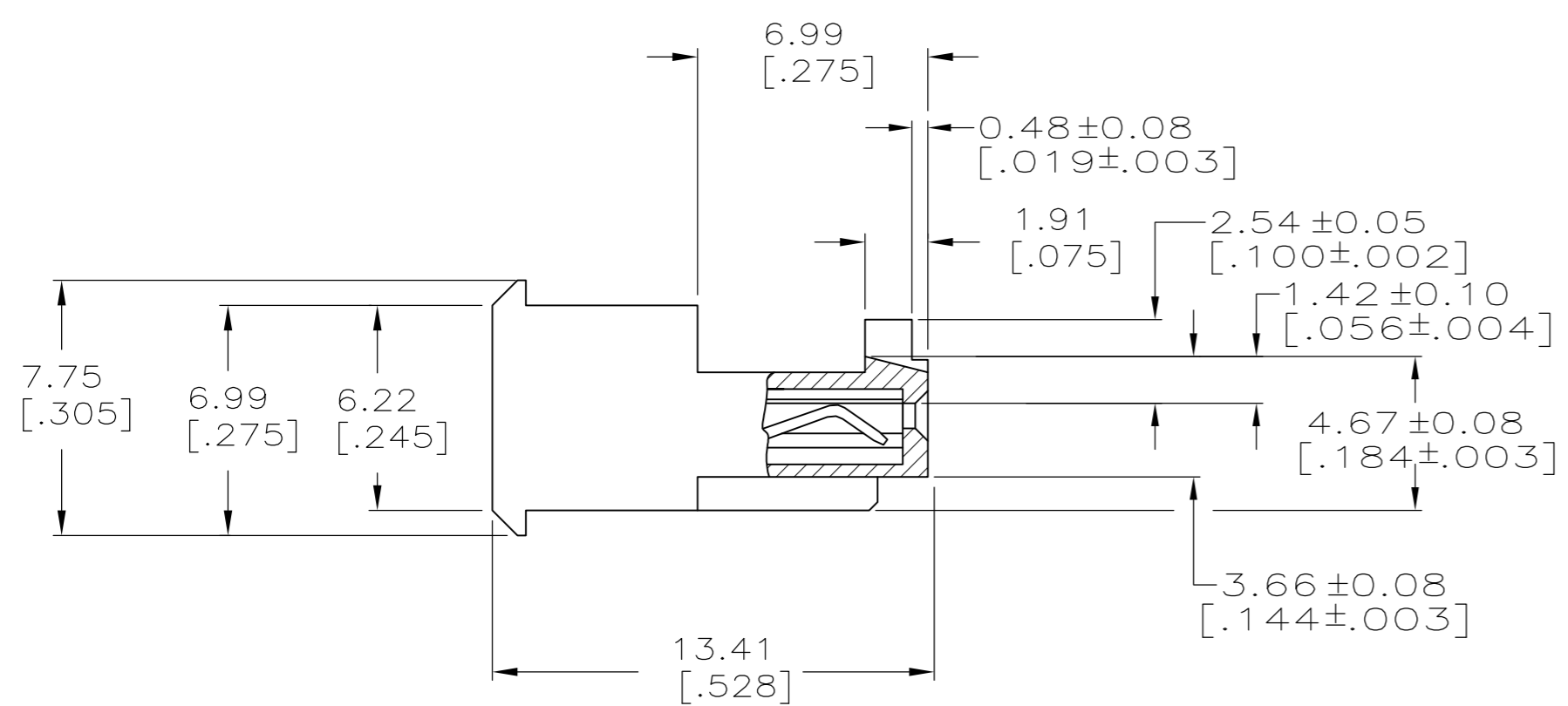
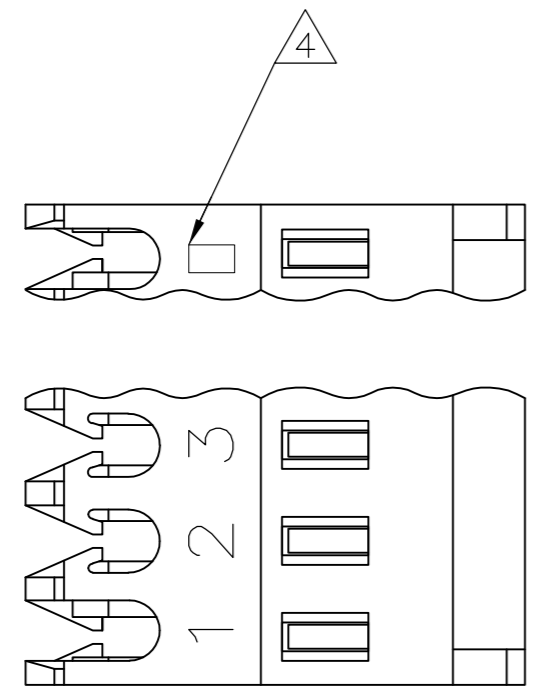


THIS DRAWING IS UNPUBLISHED. RELEASED FOR PUBLICATION
 © COPYRIGHT - TE Connectivity Ltd. ALL RIGHTS RESERVED.

REVISIONS					
P	LTR	DESCRIPTION	DATE	DWN	APVD
B2		REVISED PER ECR-17-018813	08FEB2018	BDA	SG



LEAD FREE	38.10	[1.500]	15	4-644579-5
	35.56	[1.400]	14	4-644579-4
	33.02	[1.300]	13	4-644579-3
	30.48	[1.200]	12	4-644579-2
	27.94	[1.100]	11	4-644579-1
	25.40	[1.000]	10	4-644579-0
	22.86	[.900]	9	3-644579-9
	20.32	[.800]	8	3-644579-8
	17.78	[.700]	7	3-644579-7
	15.24	[.600]	6	3-644579-6
	12.70	[.500]	5	3-644579-5
	10.16	[.400]	4	3-644579-4
	7.62	[.300]	3	3-644579-3
	5.08	[.200]	2	3-644579-2

CONTAINS LEAD	38.10	[1.500]	15	4-644579-5
	35.56	[1.400]	14	4-644579-4
	33.02	[1.300]	13	4-644579-3
	30.48	[1.200]	12	4-644579-2
	27.94	[1.100]	11	4-644579-1
	25.40	[1.000]	10	4-644579-0
	22.86	[.900]	9	4-644579-9
	20.32	[.800]	8	4-644579-8
	17.78	[.700]	7	4-644579-7
	15.24	[.600]	6	4-644579-6
	12.70	[.500]	5	4-644579-5
	10.16	[.400]	4	4-644579-4
	7.62	[.300]	3	4-644579-3
	5.08	[.200]	2	4-644579-2

⚠ MATERIAL: CONNECTOR-NYLON UL94V-0 (BLACK).
 CONTACTS-0.30 [.012] THICK COPPER ALLOY
 BRIGHT TIN-LEAD 0.00203 [.000080] MIN THICK FOR CONTACTS
 644579-2 THRU 1-644579-5
 MATTE WHISKER MITIGATED TIN PLATE 0.00203 [.000080] MIN THICK
 OVER 0.00076 [.000030] MIN THICK NICKEL FOR CONTACTS
 3-644579-2 THRU 4-644579-5

2. CONTACTS ACCEPT 24 AWG WIRE WITH 1.52 [.060] MAX INSULATION DIAMETER.

3. CONTACTS MUST ACCEPT 0.64±0.03 [.025±.001] SQUARE POST AND REMAIN LOCKED IN POSITION.

⚠ IDENTIFICATION NUMBER FOR LAST CIRCUIT MAY NOT APPEAR ON ALL ASSEMBLIES.

5. DIMENSIONS IN BRACKETS ARE IN INCHES.

6. HOUSING FEATURES ARE: FEED THRU WITH LOCKING RAMP AND WITH POLARIZING TAB.

⚠ OBSOLETE PARTS: OBSOLETE CIS STREAMLINING PER D.RENAUD/D.SINISI

⚠ OBSOLETE PARTS

⚠ SUPERSEDED
 ⚠ SUPERSEDED
 ⚠ SUPERSEDED

THIS DRAWING IS A CONTROLLED DOCUMENT.		DWN S. HOOVER 03-DEC-2004	TE Connectivity Ltd.	
DIMENSIONS: mm [INCHES]		CHK D. BOSSI 03-DEC-2004		
TOLERANCES UNLESS OTHERWISE SPECIFIED:		APVD D. BOSSI 03-DEC-2004	NAME MTA .100 CONNECTOR ASSEMBLY 24 AWG, UL94V-0, SPECIAL	
0 PLC ±		PRODUCT SPEC 108-1050	SIZE A2	CAGE CODE 00779
1 PLC ±		APPLICATION SPEC 114-1019	DRAWING NO C=644579	RESTRICTED TO
2 PLC ± 0.13 [.005]		MATERIAL ⚠	WEIGHT	SCALE 5:1
3 PLC ±		FINISH ⚠	CUSTOMER DRAWING	SHEET 1 of 1
4 PLC ±				REV B2
ANGLES ±				

Mouser Electronics

Authorized Distributor

Click to View Pricing, Inventory, Delivery & Lifecycle Information:

[TE Connectivity:](#)

[4-644579-3](#)